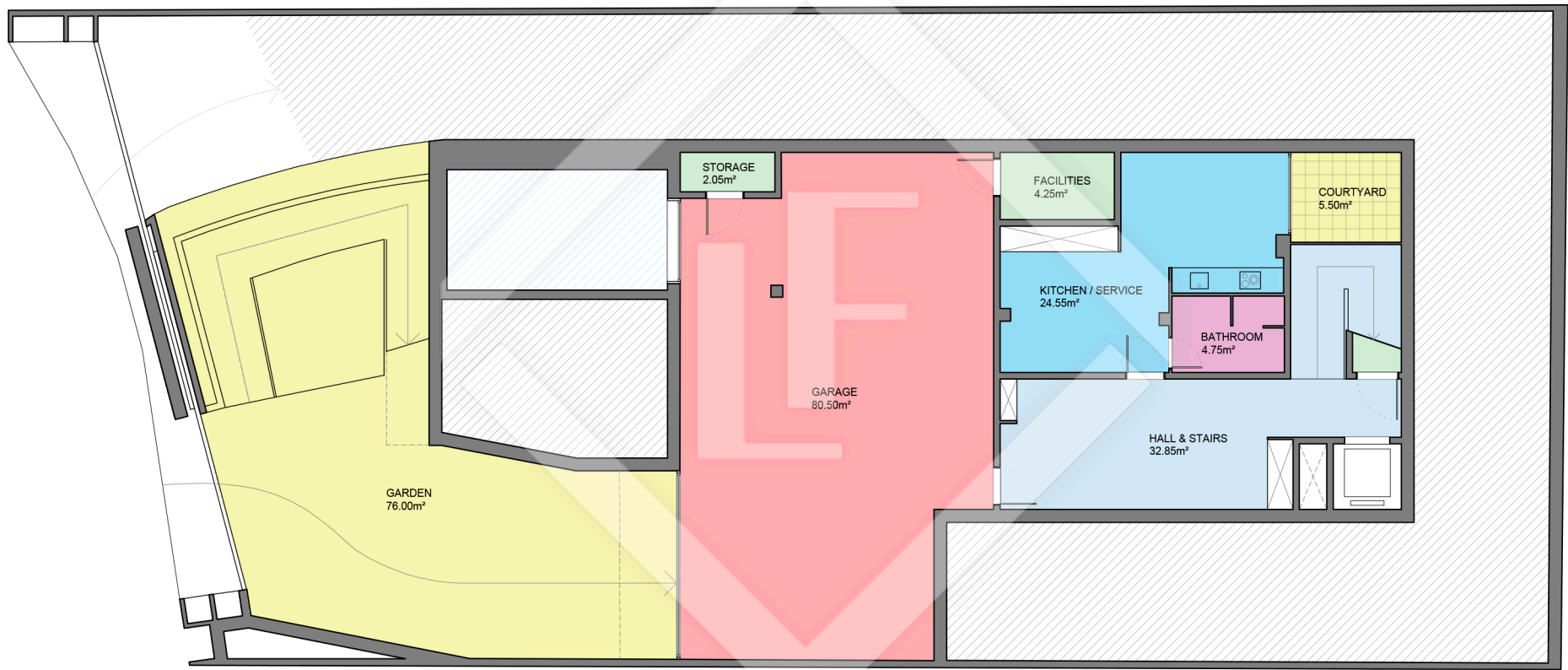


BCN31906



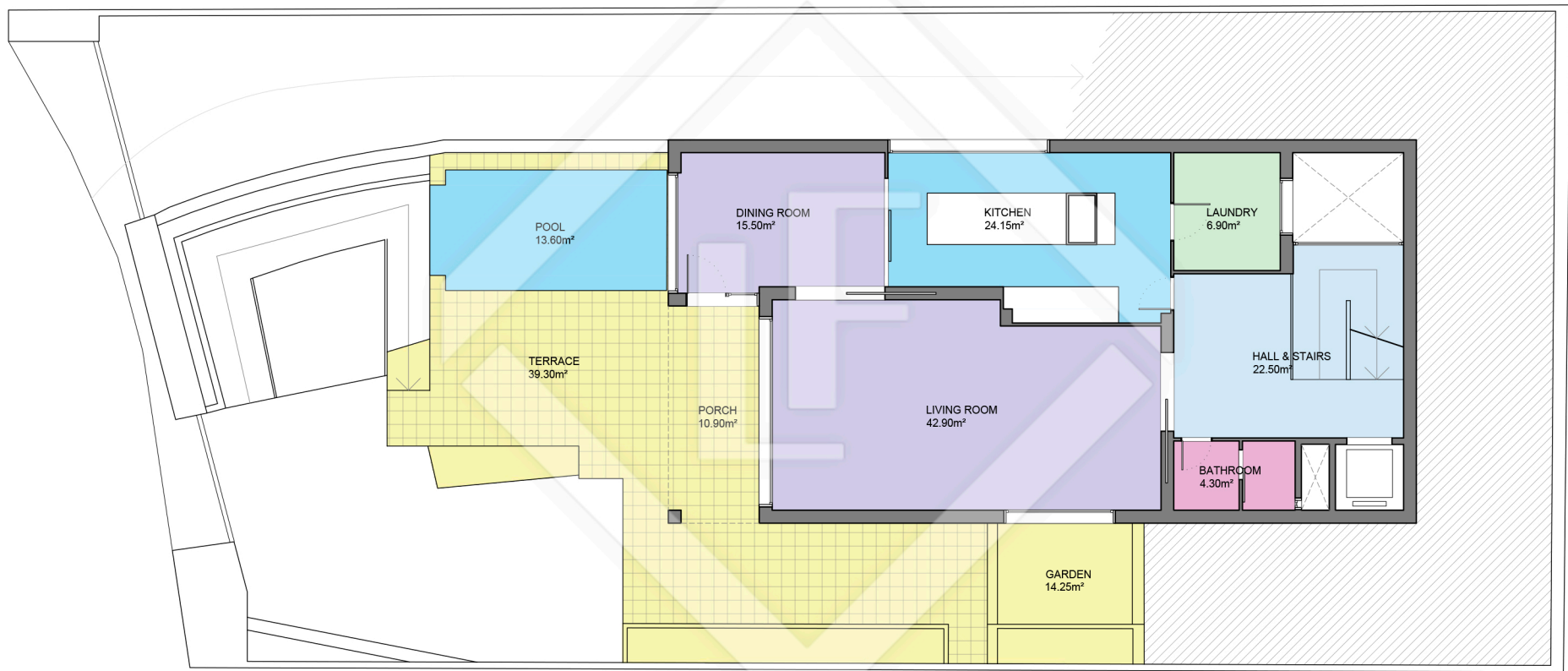
LUCAS FOX
INTERNATIONAL PROPERTIES

Measurements BASEMENT FLOOR	
Built surface	180.75m²
Useful surface	148.95m²
Exterior surface	81.50m²
Measurements TOTAL FLOOR	
Built surface	555.35m²
Useful surface	438.20m²
Exterior surface	265.25m²



Scale in metres. Indicative only. Dimensions are approximate. All information contained here is gathered from sources we believe to be reliable. However we cannot guarantee its accuracy and interested persons should rely on their own enquiries.

BCN31906



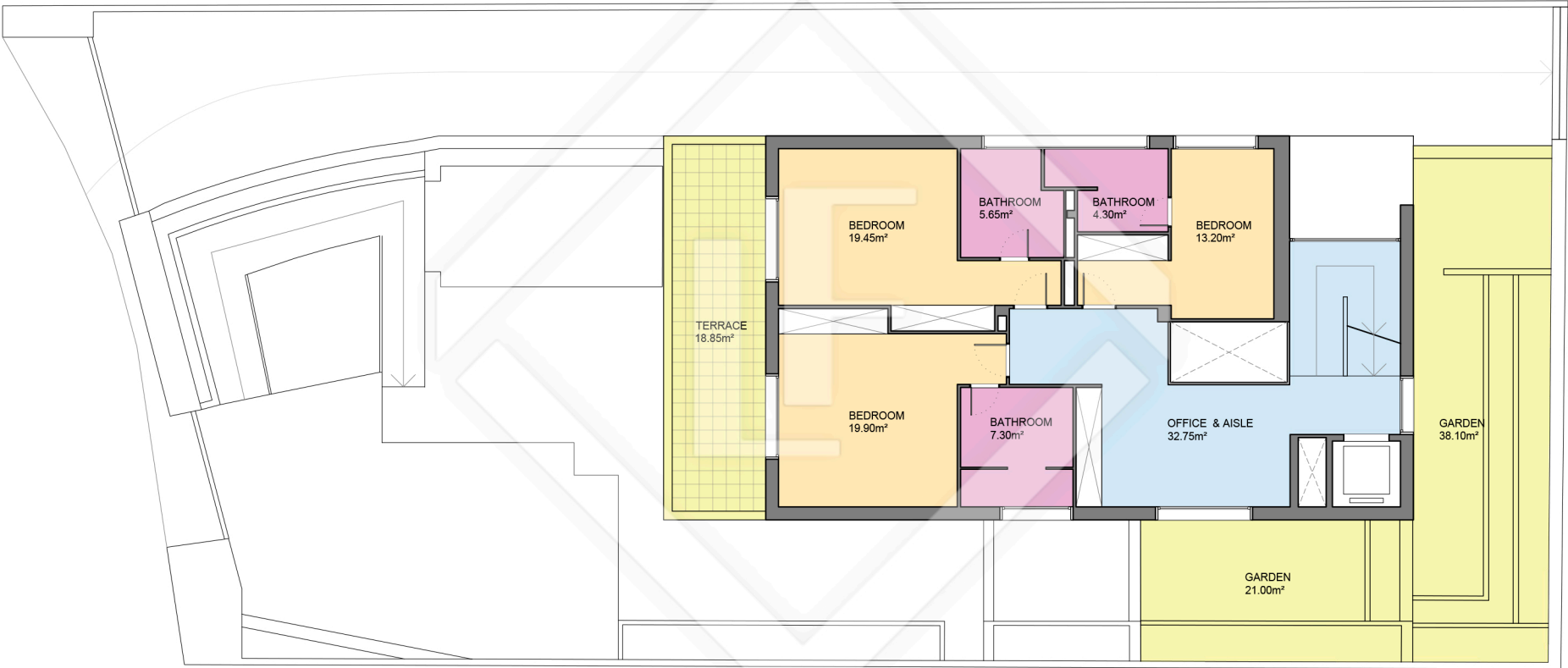
LUCAS FOX
INTERNATIONAL PROPERTIES



Scale in metres. Indicative only. Dimensions are approximate. All information contained here is gathered from sources we believe to be reliable. However we cannot guarantee its accuracy and interested persons should rely on their own enquiries.

Measurements GROUND FLOOR	
Built surface	147.30m ²
Useful surface	116.25m ²
Exterior surface	78.05m ²
Measurements TOTAL FLOOR	
Built surface	555.35m ²
Useful surface	438.20m ²
Exterior surface	265.25m ²

BCN31906

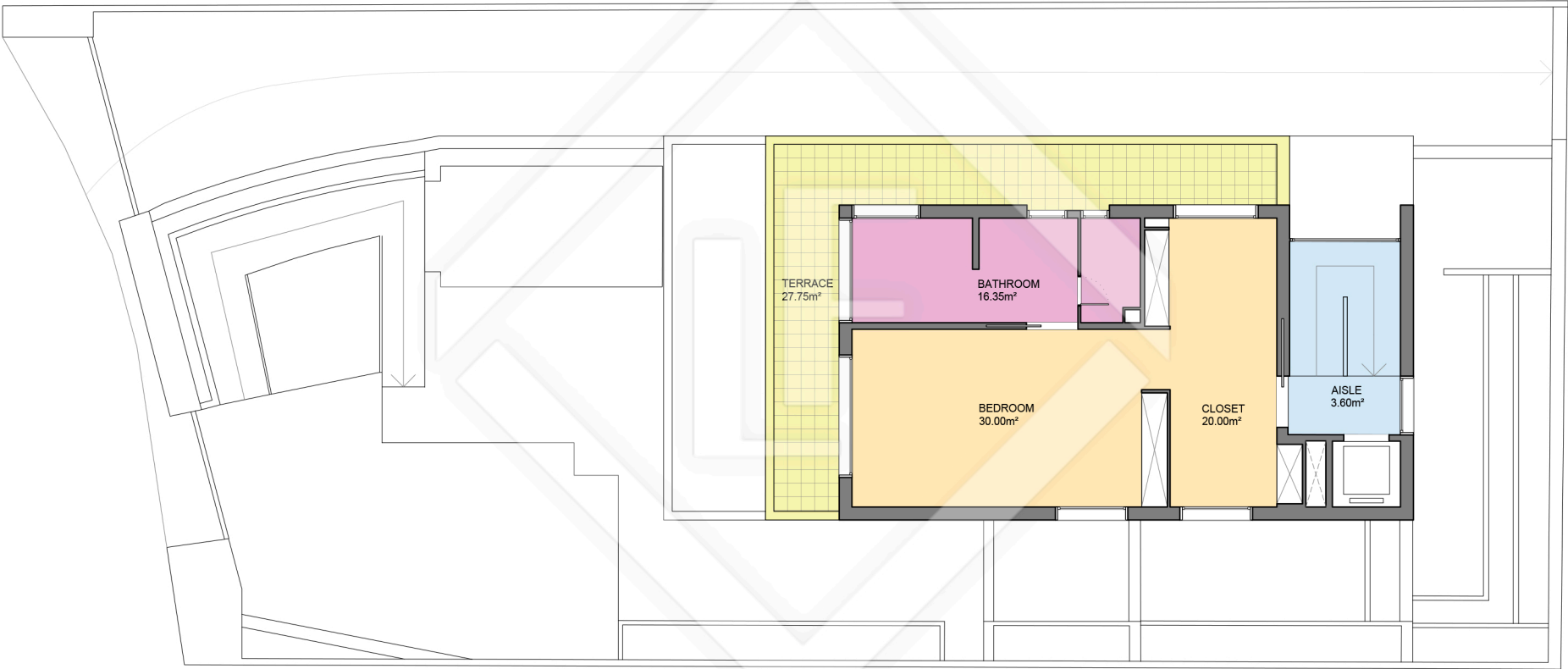


LUCAS FOX
INTERNATIONAL PROPERTIES



Scale in metres. Indicative only. Dimensions are approximate. All information contained here is gathered from sources we believe to be reliable. However we cannot guarantee its accuracy and interested persons should rely on their own enquiries.

Measurements FIRST FLOOR	
Built surface	130.00m²
Useful surface	103.05m²
Exterior surface	77.95m²
Measurements TOTAL FLOOR	
Built surface	555.35m²
Useful surface	438.20m²
Exterior surface	265.25m²



LUCAS FOX
INTERNATIONAL PROPERTIES



Scale in metres. Indicative only. Dimensions are approximate. All information contained here is gathered from sources we believe to be reliable. However we cannot guarantee its accuracy and interested persons should rely on their own enquiries.

Measurements SECOND FLOOR	
Built surface	97.30m ²
Useful surface	69.95m ²
Exterior surface	27.75m ²
Measurements TOTAL FLOOR	
Built surface	555.35m ²
Useful surface	438.20m ²
Exterior surface	265.25m ²