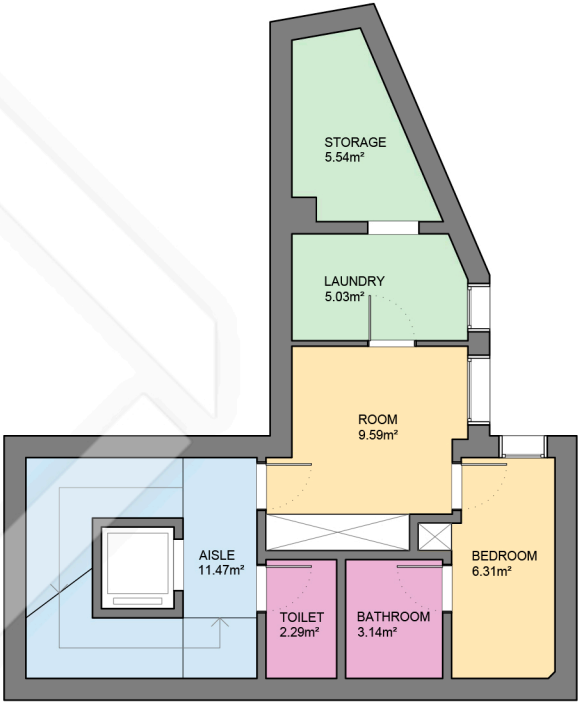


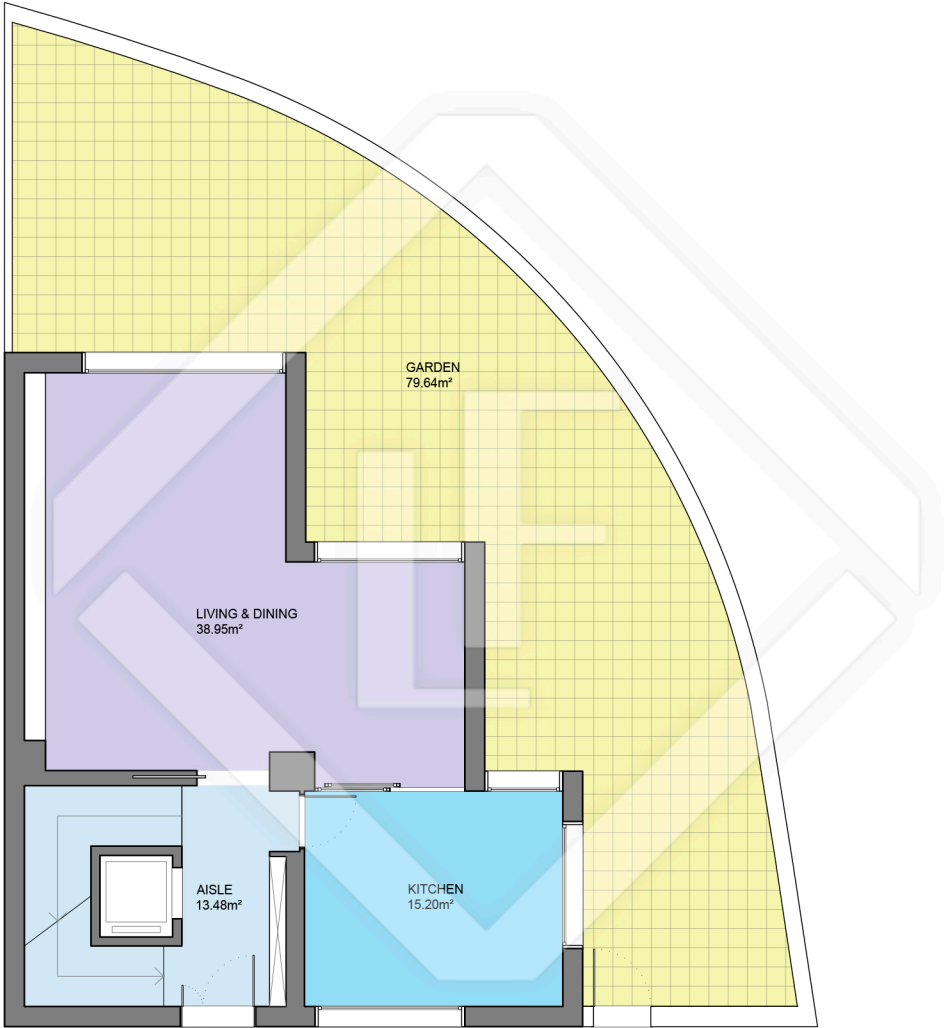
Basement floor



Semi-basement floor

Measurements BASEMENT FLOOR	
Built surface	104.27m²
Useful surface	76.58m²
Height	2.15m
Measurements SEMI-BASEMENT FLOOR	
Built surface	62.75m²
Useful surface	43.36m²
Height	2.35m
Measurements TOTAL FLOOR	
Built surface	400.96m²
Useful surface	299.14m²
Exterior surface	100.71m²

BCN31253



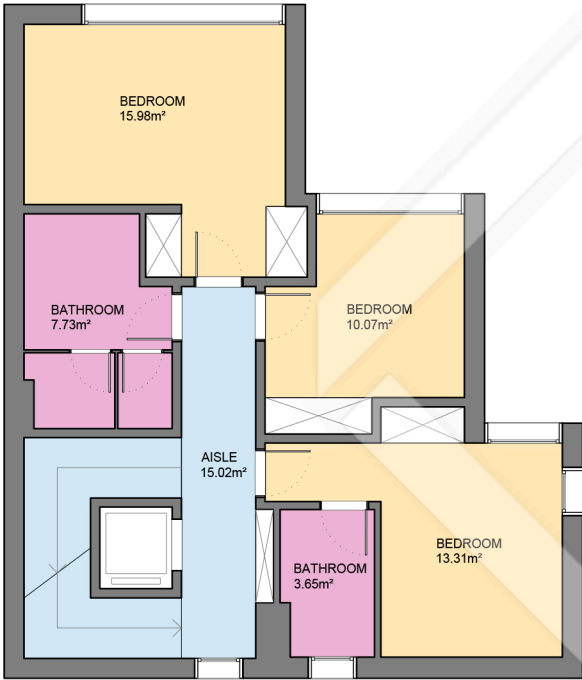
Ground floor



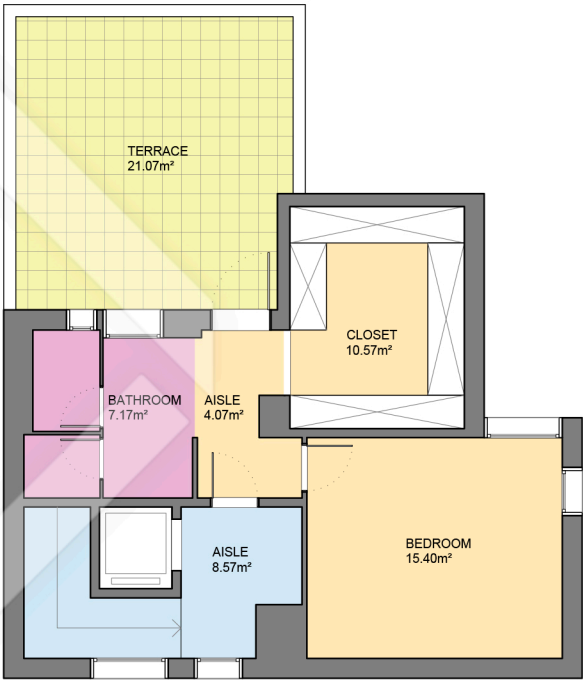
Measurements GROUND FLOOR	
Built surface	86.02m ²
Useful surface	67.63m ²
Exterior surface	79.64m ²
Height	2.50m
Measurements TOTAL FLOOR	
Built surface	400.96m ²
Useful surface	299.14m ²
Exterior surface	100.71m ²



Scale in metres. Indicative only. Dimensions are approximate. All information contained here is gathered from sources we believe to be reliable. However we cannot guarantee its accuracy and interested persons should rely on their own enquiries.



First floor



Second floor

Measurements FIRST FLOOR	
Built surface	86.02m²
Useful surface	65.78m²
Height	2.50m
Measurements SECOND FLOOR	
Built surface	61.90m²
Useful surface	45.79m²
Exterior surface	21.07m²
Height	2.50m
Measurements TOTAL FLOOR	
Built surface	400.96m²
Useful surface	299.14m²
Exterior surface	100.71m²