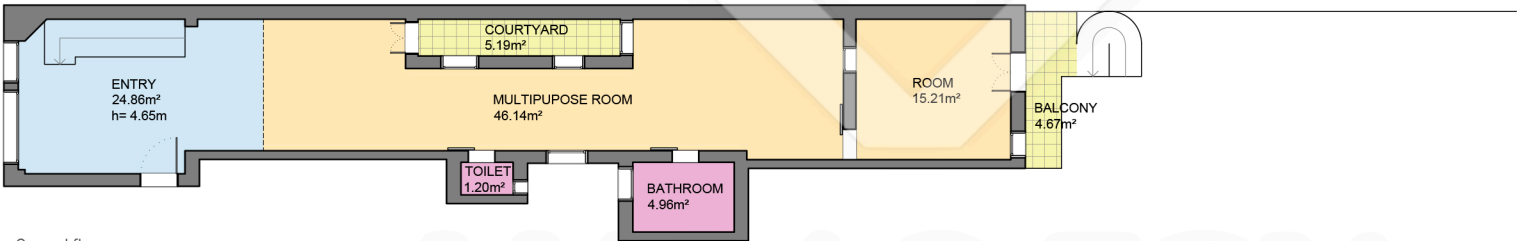


Semi-basement floor



Ground floor

Measurements SEMI-BASEMENT FLOOR	
Built surface	271.10m²
Useful surface	210.39m²
Exterior surface	329.97m²
Height	2.55m
Measurements GROUND FLOOR	
Built surface	120.71m²
Useful surface	92.36m²
Exterior surface	9.86m²
Height	2.25m
Measurements TOTAL FLOOR	
Built surface	391.81m²
Useful surface	302.75m²
Exterior surface	339.83m²