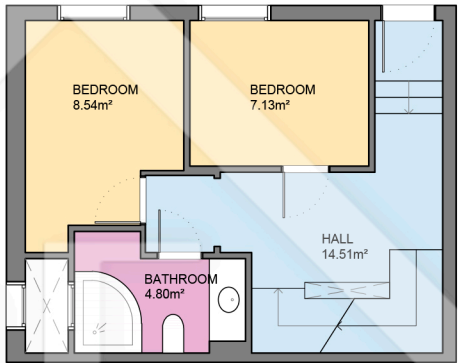
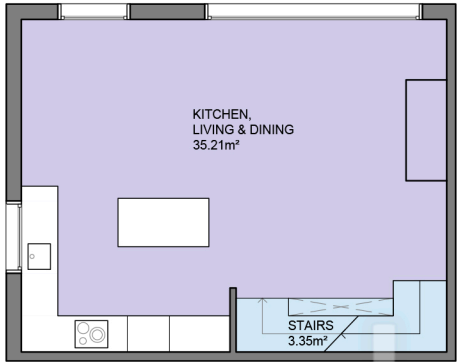


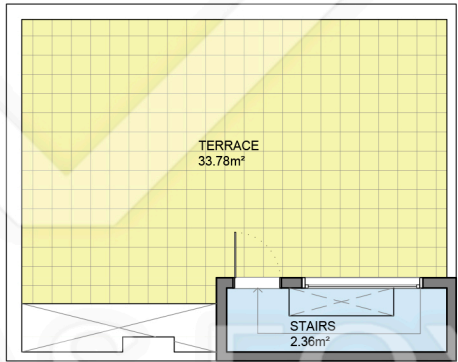
Basement Floor



Ground Floor



First Floor



Terrace Floor

| Measurements BASEMENT FLOOR | |
|-----------------------------|----------------------|
| Built surface | 43.63m ² |
| Useful surface | 34.65m ² |
| Height | 2.40m |
| Measurements GROUND FLOOR | |
| Built surface | 42.52m ² |
| Useful surface | 34.98m ² |
| Height | 2.40m |
| Measurements FIRST FLOOR | |
| Built surface | 43.63m ² |
| Useful surface | 38.56m ² |
| Height | 2.68m |
| Measurements TERRACE FLOOR | |
| Built surface | 4.65m ² |
| Useful surface | 2.36m ² |
| Exterior surface | 33.78m ² |
| Measurements TOTAL FLOOR | |
| Built surface | 134.43m ² |
| Useful surface | 110.55m ² |
| Exterior surface | 33.78m ² |