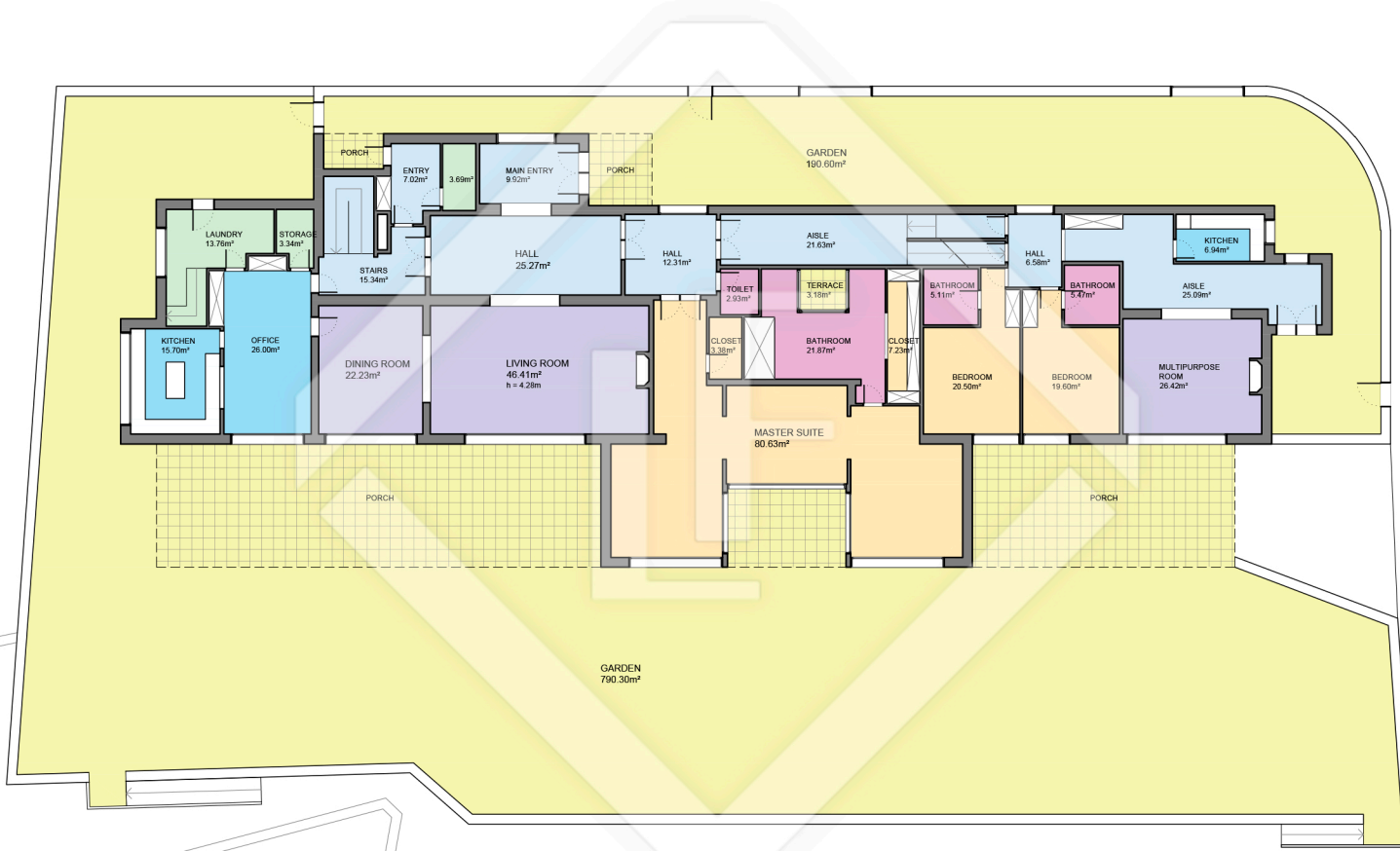
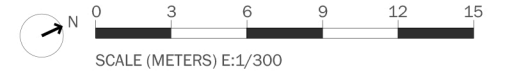


Measurements SEMI-BASEMENT FLOOR	
Built surface	732.45m <sup>2</sup>
Useful surface	641.83m <sup>2</sup>
Paddle surface	216.56m <sup>2</sup>
Exterior surface	668.43m <sup>2</sup>
Height	2.95m
Measurements TOTAL FLOOR	
Built surface	1421.26m <sup>2</sup>
Useful surface	1203.84m <sup>2</sup>
Paddle surface	216.56m <sup>2</sup>
Exterior surface	1656.61m <sup>2</sup>
Terrain surface	2269.00m <sup>2</sup>

# BCN28829



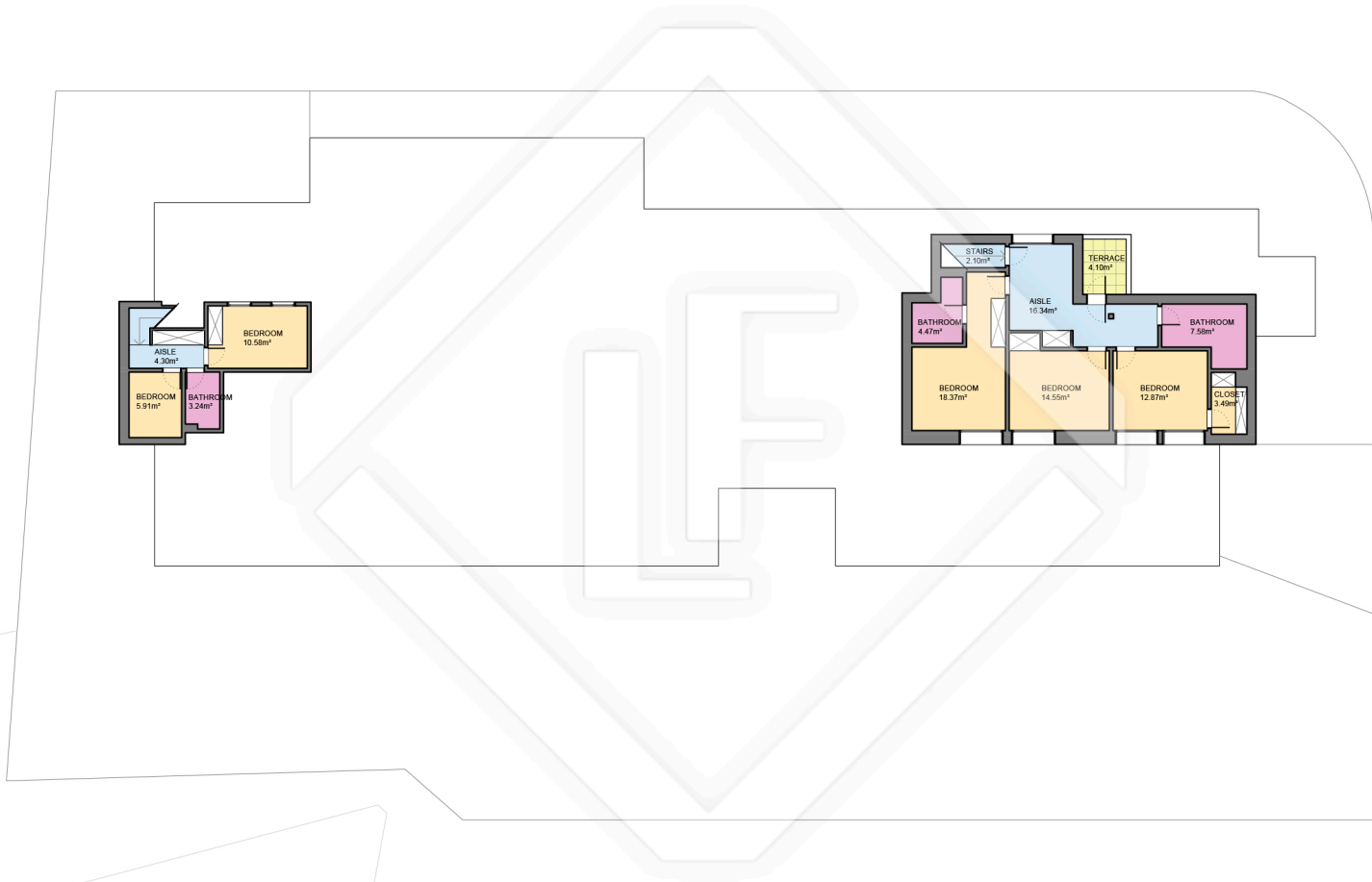
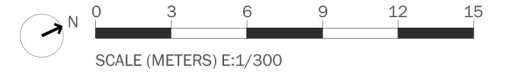
Measurements GROUND FLOOR	
Built surface	550.34m <sup>2</sup>
Useful surface	456.40m <sup>2</sup>
Exterior surface	984.08m <sup>2</sup>
Measurements TOTAL FLOOR	
Built surface	1421.26m <sup>2</sup>
Useful surface	1203.84m <sup>2</sup>
Paddle surface	216.56m <sup>2</sup>
Exterior surface	1656.61m <sup>2</sup>
Terrain surface	2269.00m <sup>2</sup>



LUCAS FOX  
INTERNATIONAL PROPERTIES

Scale in metres. Indicative only. Dimensions are approximate. All information contained here is gathered from sources we believe to be reliable. However we cannot guarantee its accuracy and interested persons should rely on their own enquiries.

BCN28829



LUCAS FOX  
INTERNATIONAL PROPERTIES

Measurements FIRST FLOOR	
Built surface	138.47m <sup>2</sup>
Useful surface	105.61m <sup>2</sup>
Exterior surface	4.10m <sup>2</sup>
Height	2.40m
Measurements TOTAL FLOOR	
Built surface	1421.26m <sup>2</sup>
Useful surface	1203.84m <sup>2</sup>
Paddle surface	216.56m <sup>2</sup>
Exterior surface	1656.61m <sup>2</sup>
Terrain surface	2269.00m <sup>2</sup>



LUCAS FOX  
INTERNATIONAL PROPERTIES

Scale in metres. Indicative only. Dimensions are approximate. All information contained here is gathered from sources we believe to be reliable. However we cannot guarantee its accuracy and interested persons should rely on their own enquiries.