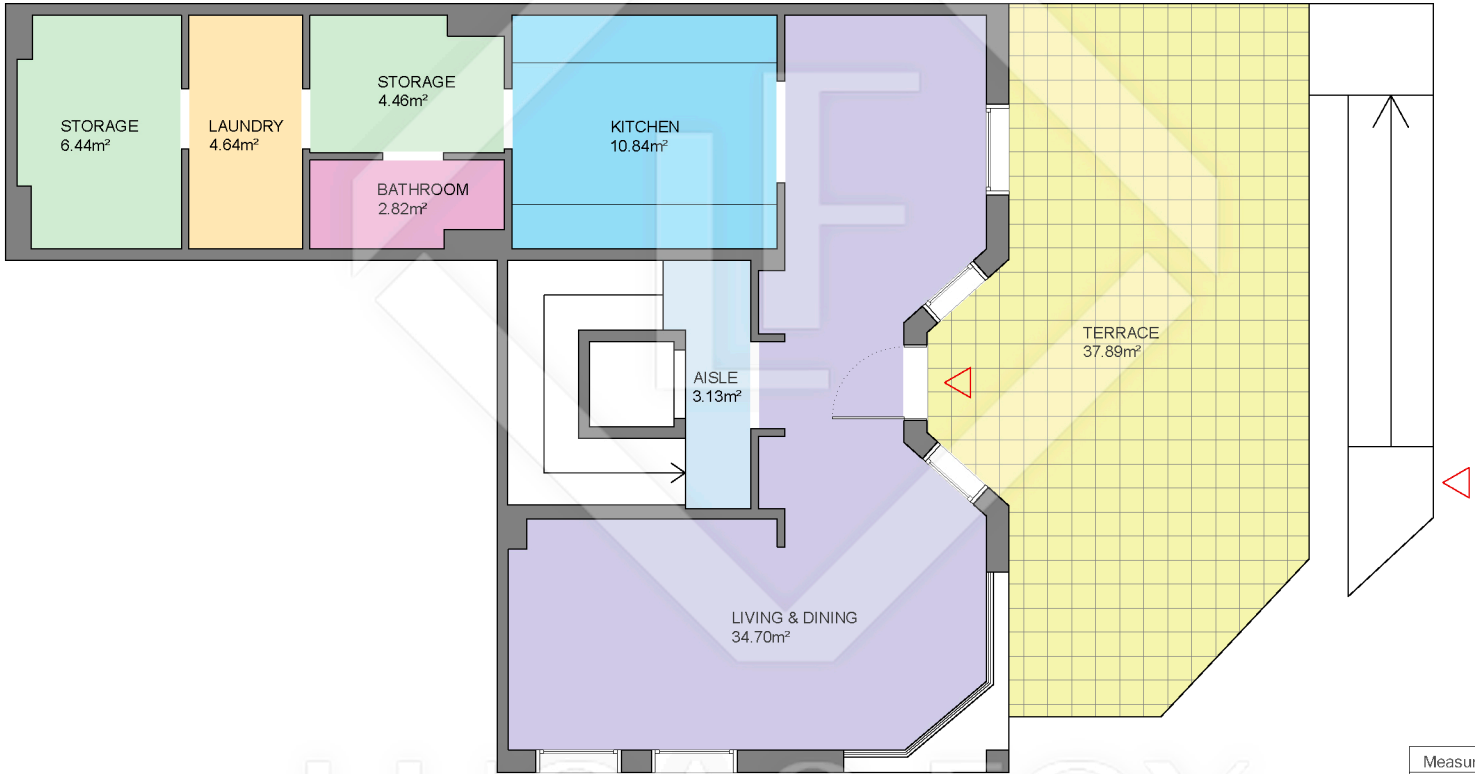


Measurements BASEMENT FLOOR	
Built surface	69.42m²
Useful surface	52.67m²
Exterior surface	49.19m²

Measurements HOUSE	
Built surface	325.47m²
Useful surface	236.07m²
Exterior surface	134.02m²
Pool	13.59m²

BCN26829



LUCAS FOX
INTERNATIONAL PROPERTIES

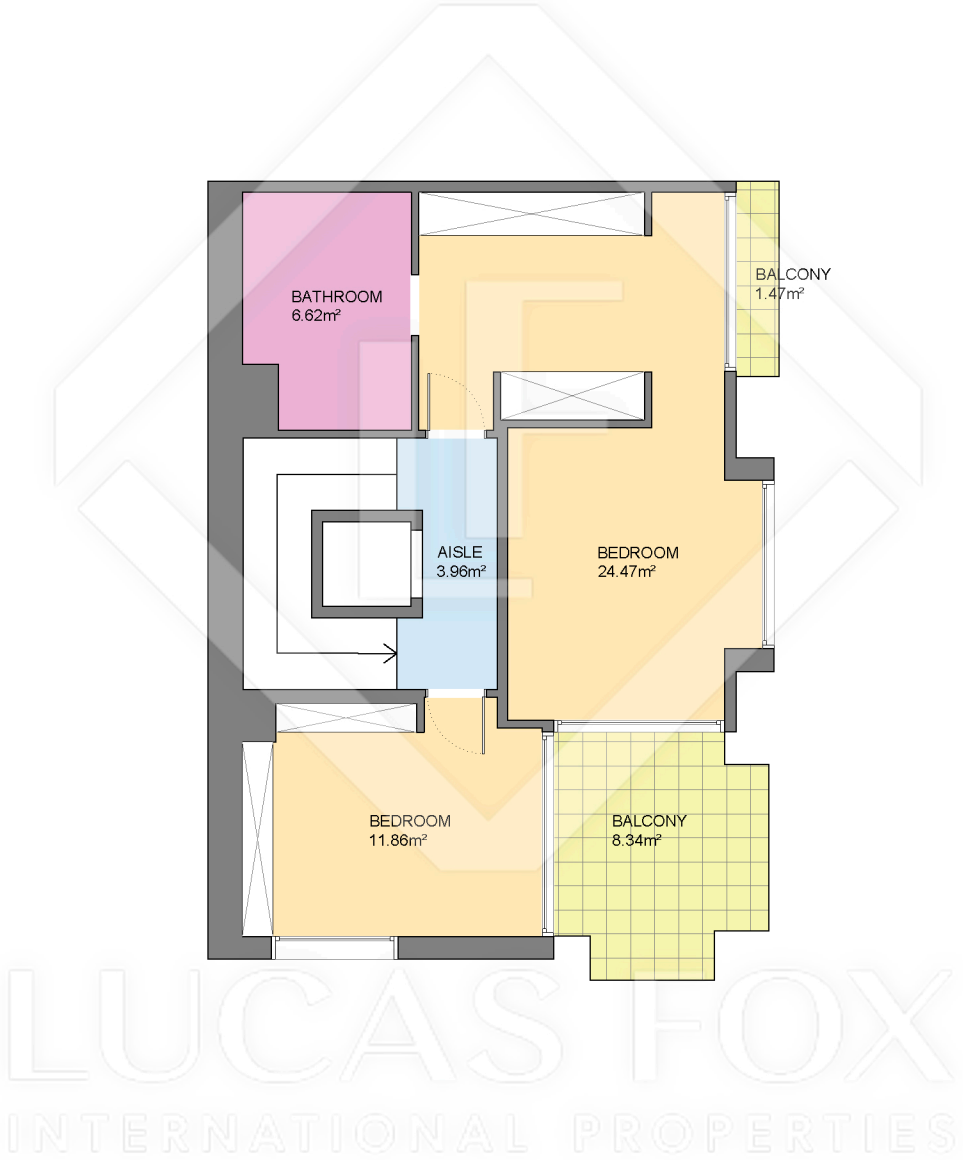
Measurements GROUND FLOOR	
Built surface	88.40m²
Useful surface	67.03m²
Exterior surface	37.89m²

Measurements HOUSE	
Built surface	325.47m²
Useful surface	236.07m²
Exterior surface	134.02m²
Pool	13.59m²



Scale in metres. Indicative only. Dimensions are approximate. All information contained here is gathered from sources we believe to be reliable. However we cannot guarantee its accuracy and interested persons should rely on their own enquiries.

BCN26829



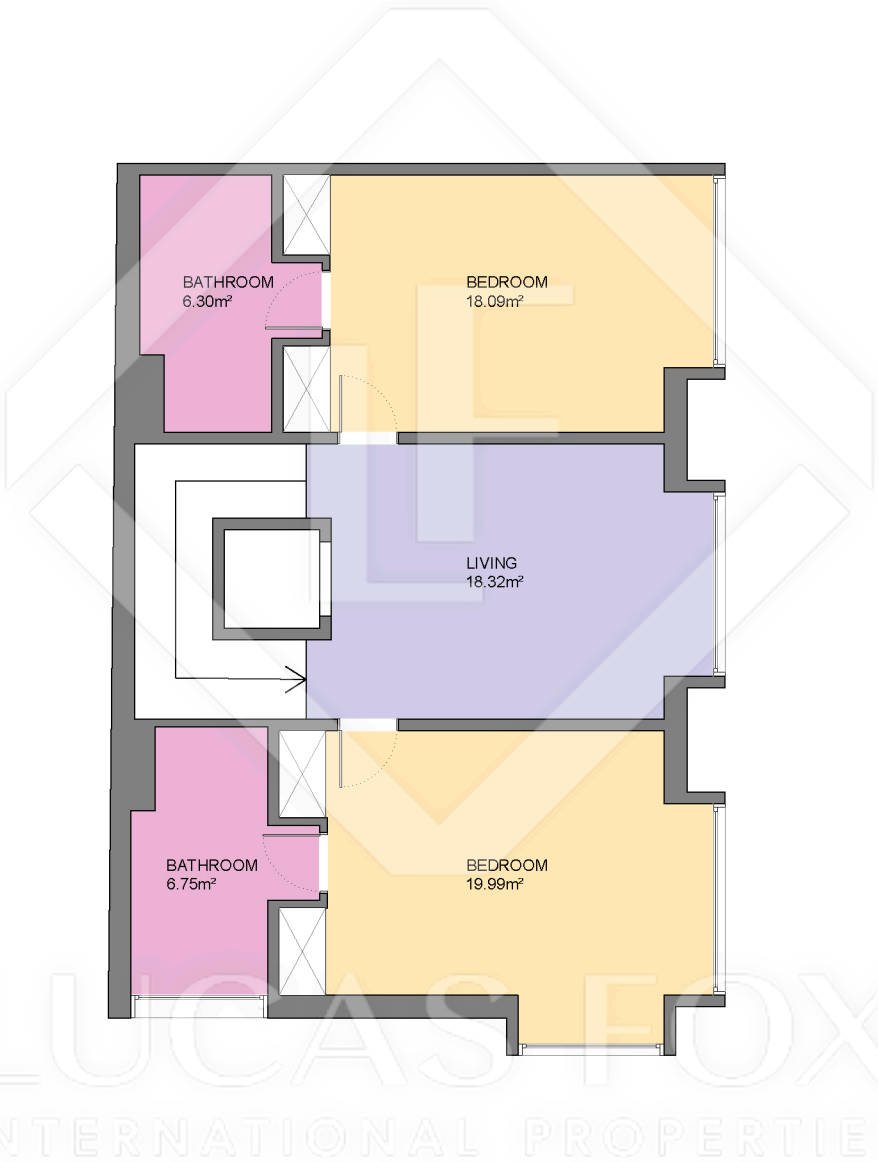
Measurements FIRST FLOOR	
Built surface	66.02m²
Useful surface	46.91m²
Exterior surface	9.81m²

Measurements HOUSE	
Built surface	325.47m²
Useful surface	236.07m²
Exterior surface	134.02m²
Pool	13.59m²



Scale in metres. Indicative only. Dimensions are approximate. All information contained here is gathered from sources we believe to be reliable. However we cannot guarantee its accuracy and interested persons should rely on their own enquiries.

BCN26829

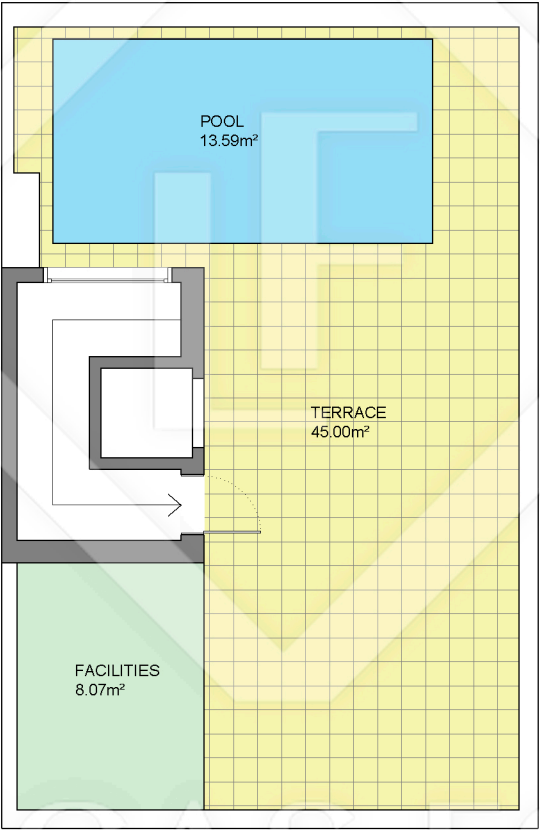


Measurements SECOND FLOOR	
Built surface	91.19m²
Useful surface	69.46m²
Exterior surface	00.00m²

Measurements HOUSE	
Built surface	325.47m²
Useful surface	236.07m²
Exterior surface	134.02m²
Pool	13.59m²



Scale in metres. Indicative only. Dimensions are approximate. All information contained here is gathered from sources we believe to be reliable. However we cannot guarantee its accuracy and interested persons should rely on their own enquiries.



Measurements ATTIC FLOOR	
Built surface	10.44m ²
Exterior surface	45.20m ²
Pool surface	13.59m ²

Measurements HOUSE	
Built surface	325.47m ²
Useful surface	236.07m ²
Exterior surface	134.02m ²
Pool	13.59m ²