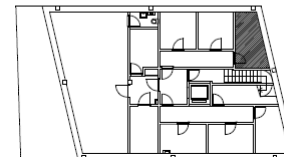
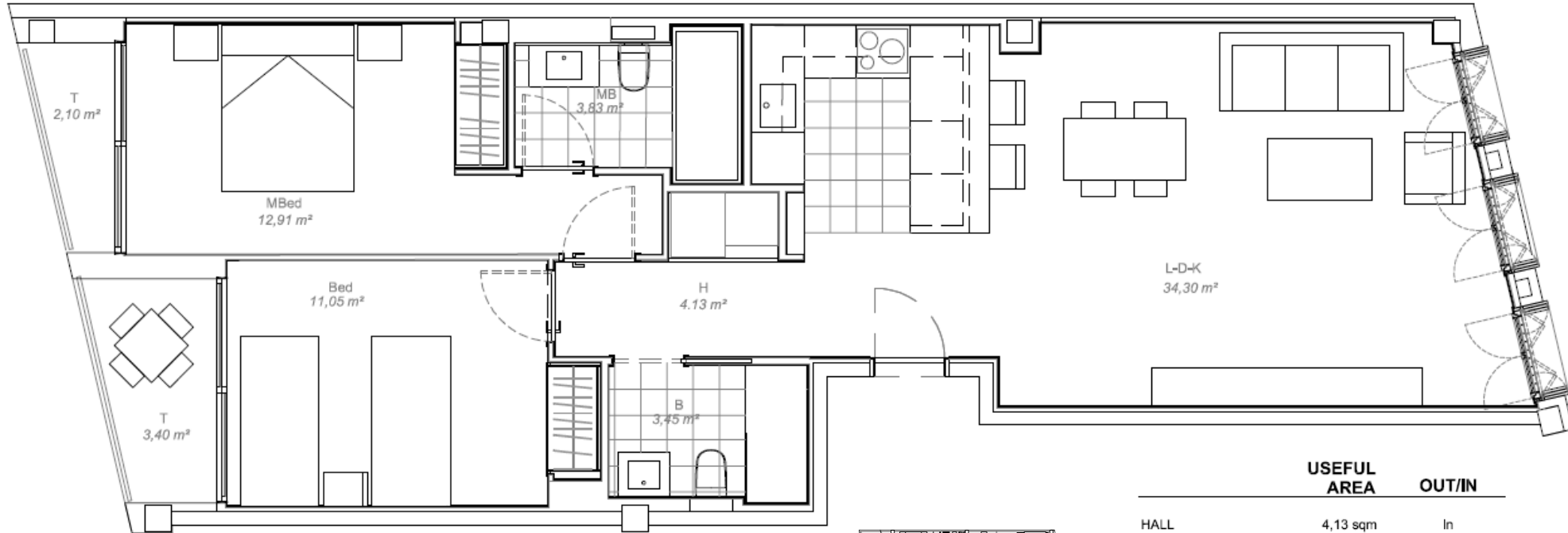


CREU DELS MOLERS

2^o 2^a

BCN 2 4 4 5 4

LUCAS FOX
NEW DEVELOPMENTS



	USEFUL AREA	OUT/IN
HALL	4,13 sqm	In
LIVING-DINING-KITCHEN	34,30 sqm	In
MASTER BEDROOM	12,90 sqm	In
BEDROOM 2	11,05 sqm	In
MASTER BATHROOM	3,83 sqm	In
BATHROOM	3,45 sqm	In
TERRACE	5,50 sqm	out
Solarium	26,70 sqm	out
Indoor useful area	69,67 sqm	
Outdoor useful area	32,20 sqm	
Built interior area	82,51 sqm	
Total built area	87,26 sqm	
Storage room	8,05 sqm	