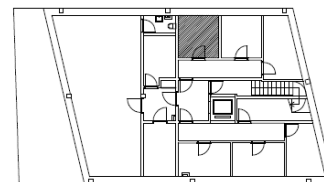
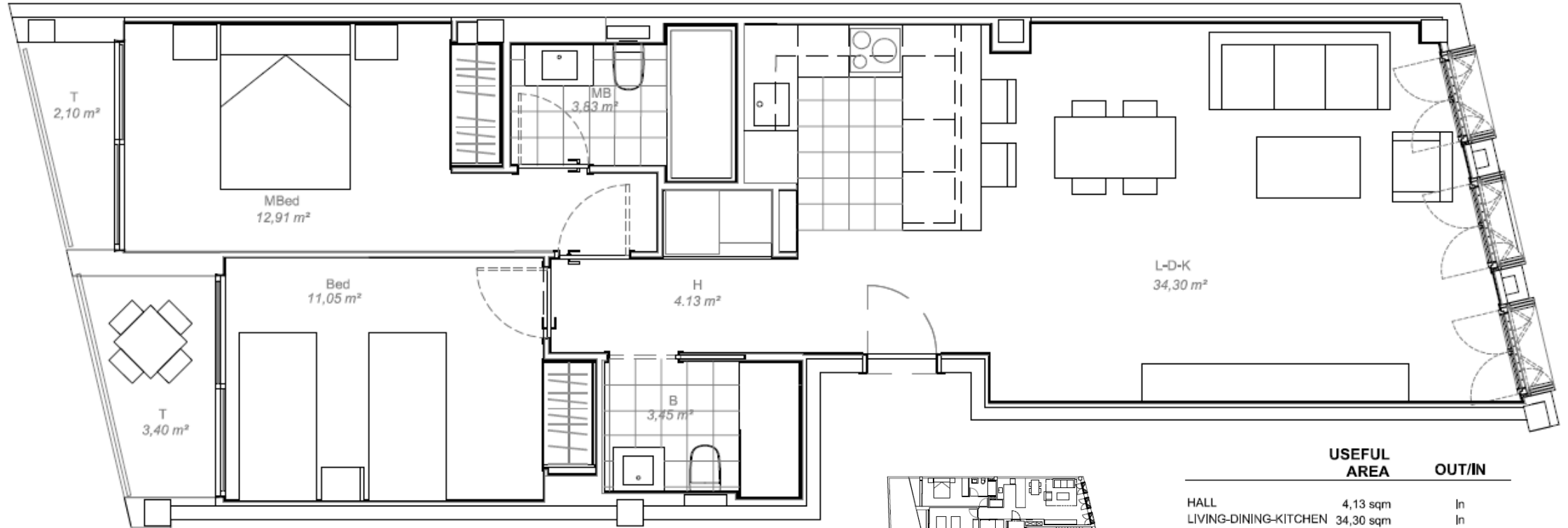


CREU DELS MOLERS

1^o 2^a

BCN 2 4 4 5 3

LUCAS FOX
NEW DEVELOPMENTS



	USEFUL AREA	OUT/IN
HALL	4,13 sqm	In
LIVING-DINING-KITCHEN	34,30 sqm	In
MASTER BEDROOM	12,91 sqm	In
BEDROOM 2	11,05 sqm	In
MASTER BATHROOM	3,83 sqm	In
BATHROOM	3,45 sqm	in
TERRACE	5,50 sqm	out

Indoor useful area	69,67 sqm
Outdoor useful area	5,50 sqm
Built interior area	82,51 sqm
Total built area	87,26 sqm

Storage room 7,46 sqm

This plan is not definitive, since it has been prepared under the Building Execution Project and, therefore, reserves the right to include the necessary modifications due to technical and/or legal requirements ordered by any administrations or public bodies, modifying it in any case to Final Documentation of the work. Accessory elements (for example, furniture, including kitchen furniture); they are merely illustrative. The turns of doors and the distribution of devices are not binding. The expressed surfaces are approximate, being able to undergo modifications due to technical and/or legal reasons in the development of the execution of the works.