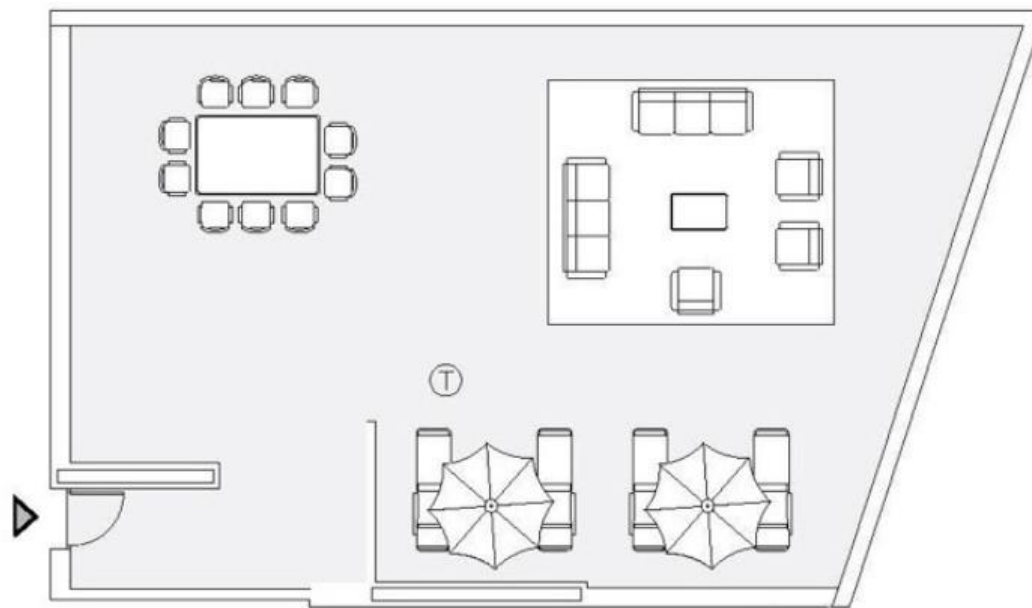
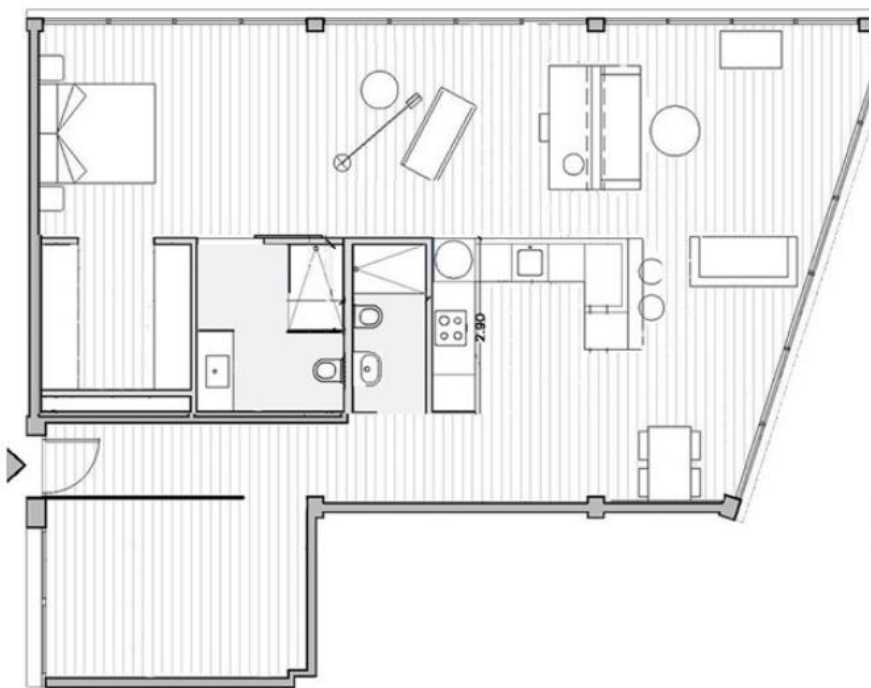
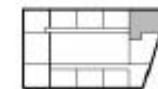


GOLDSMITH LOFTS



2º - 5ª



SUPERFICIE ÚTIL INTERIOR

ESPACIO CENTRAL	84.86 m ²
BAÑO 1	6.48 m ²
BAÑO 2	3.24 m ²
ESTUDIO	11.62 m ²

SUPERFICIE ÚTIL EXTERIOR

TERRAZA	93.18 m ²
SUPERFICIE ÚTIL EXTERIOR TOTAL	93.18 m ²
SUPERFICIE CONSTRUÍDA	117.86 m ²