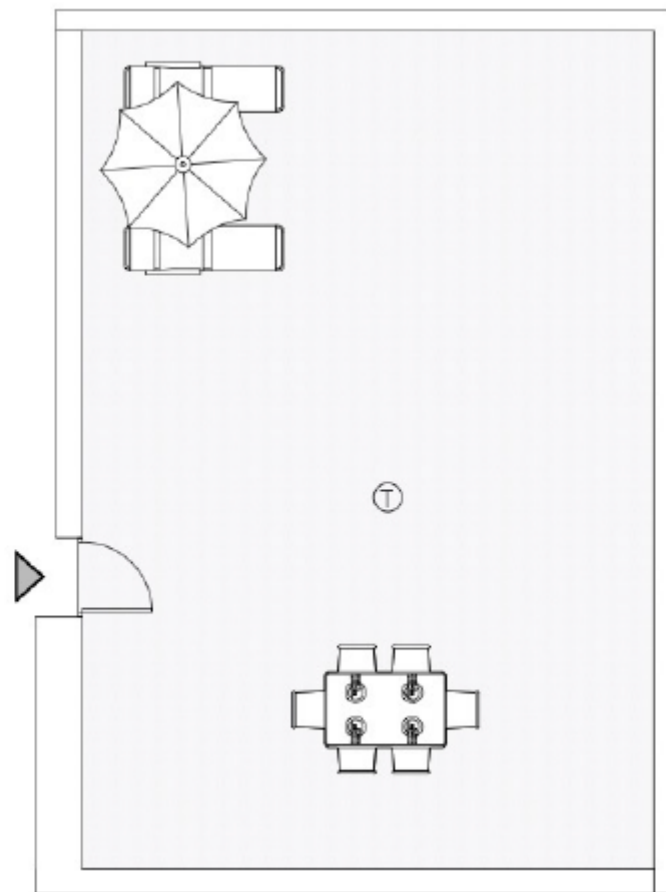
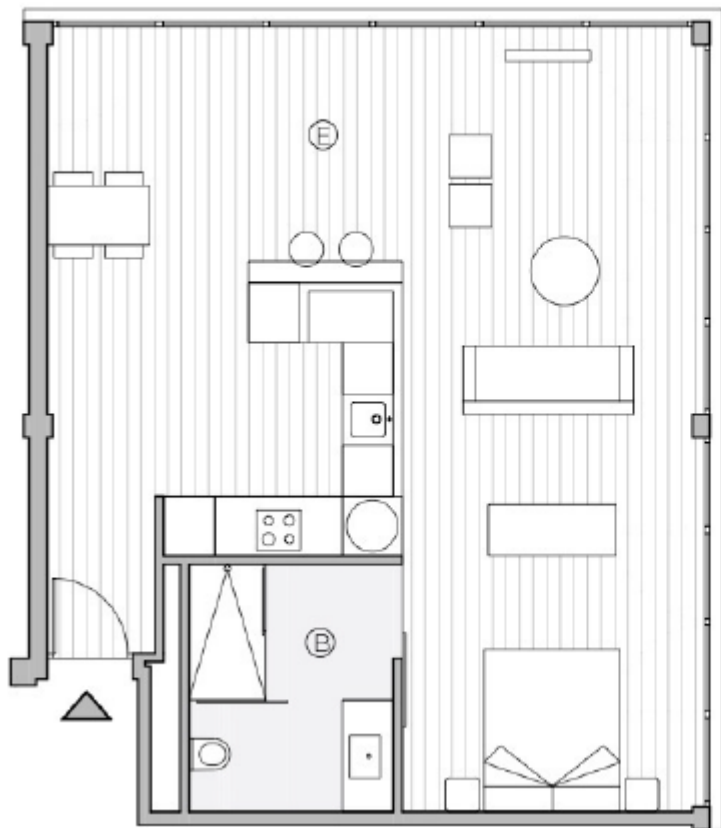
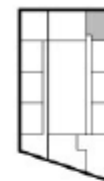


GOLDSMITH LOFTS



2º - 1ª



SUPERFICIE ÚTIL INTERIOR

ESPACIO CENTRAL	59.66 m ²
BAÑO	6.96 m ²

SUPERFICIE ÚTIL EXTERIOR

TERRAZA	67.93 m ²
SUPERFICIE ÚTIL EXTERIOR TOTAL	67.93 m ²
SUPERFICIE CONSTRUÍDA	74.19 m ²