



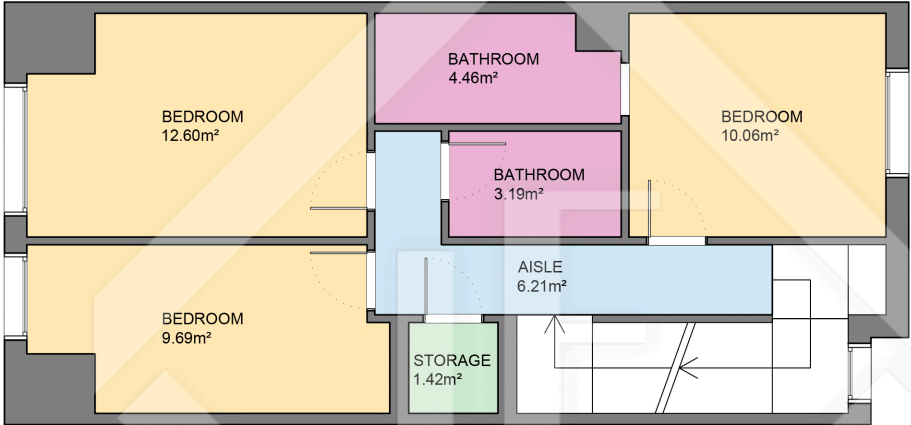
BASEMENT FLOOR



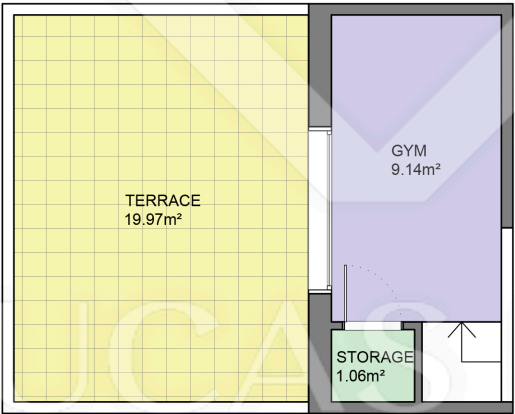
GROUND FLOOR

Measurements TOTAL FLOOR	
Built surface	201.84m²
Useful surface	155.50m²
Exterior surface	45.76m²

Measurements FLOOR	
BASEMENT FLOOR	
Built surface	63.98m²
Useful surface	51.89m²
GROUND FLOOR	
Built surface	56.94m²
Useful surface	44.69m²
Exterior surface	25.79m²



FIRST FLOOR



SECOND FLOOR

Measurements FLOOR	
FIRST FLOOR	
Built surface	66.28m²
Useful surface	47.63m²
SECOND FLOOR	
Built surface	14.63m²
Useful surface	10.19m²
Exterior surface	19.97m²