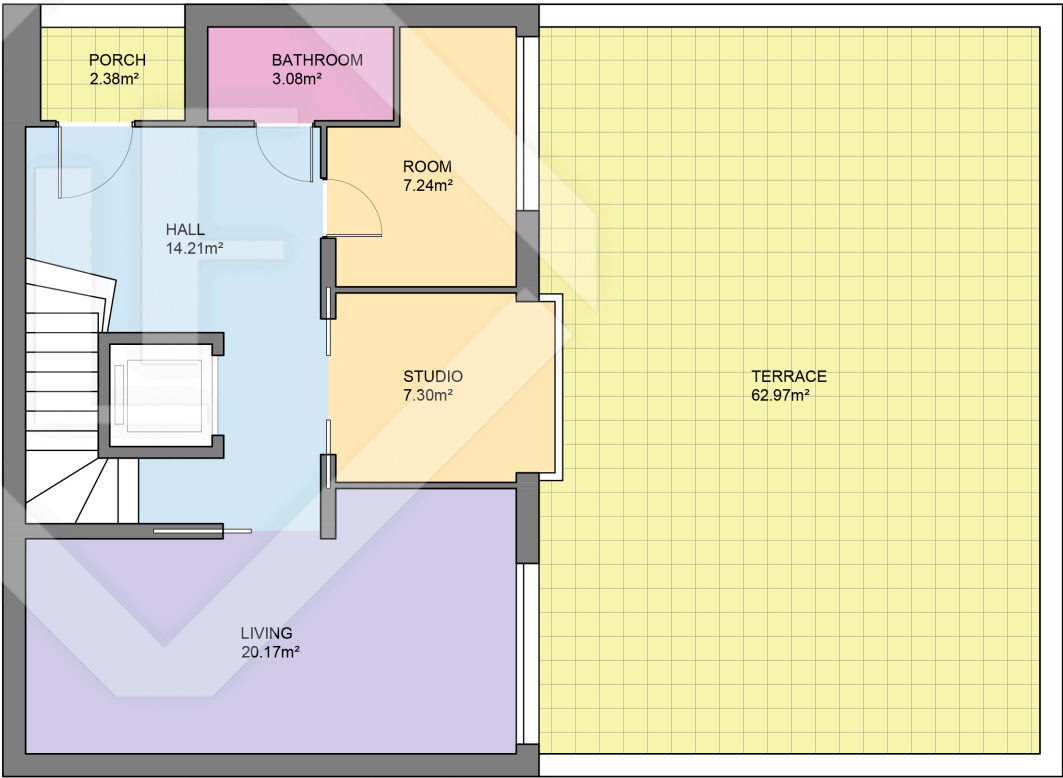


BASEMENT FLOOR

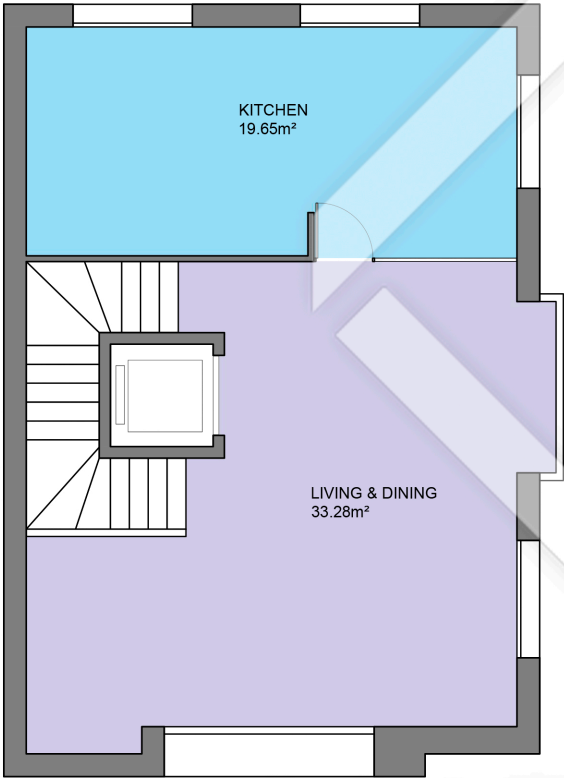
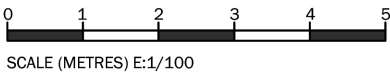


GROUND FLOOR

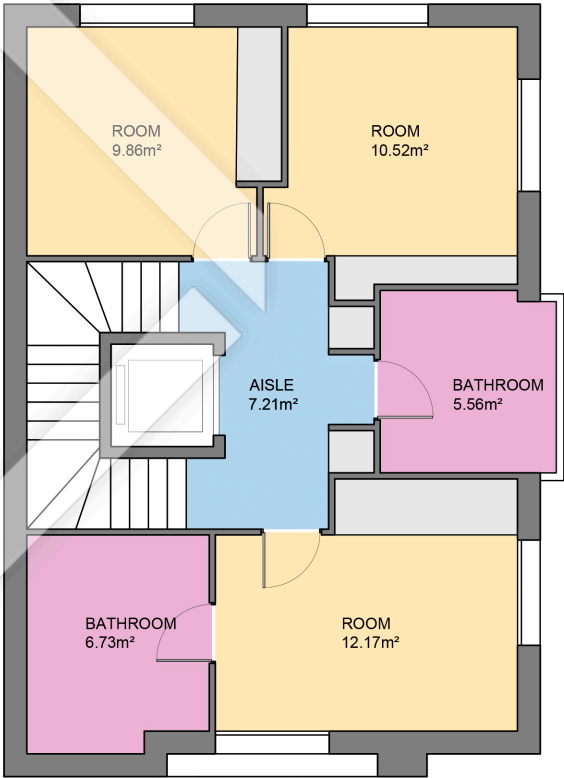
Measurements TOTAL HOUSE	
INTERIOR (Useful surface)	210.32m²
Exterior surface	65.35m²
Built surface	288.18m²

Measurements BASEMENT FLOOR	
INTERIOR (Useful surface)	53.33m²
Built surface	72.43m²

Measurements GROUND FLOOR	
INTERIOR (Useful surface)	52.01m²
Exterior surface	65.35m²
Built surface	70.25m²



FIRST FLOOR



SECOND FLOOR



Scale in metres. Indicative only. Dimensions are approximate. All information contained here in is gathered from sources we believe to be reliable. However we cannot guarantee its accuracy and interested persons should rely on their own enquiries.

Measurements FIRST FLOOR	
INTERIOR (Useful surface)	52.93m²
Built surface	72.75m²

Measurements SECOND FLOOR	
INTERIOR (Useful surface)	52.05m²
Built surface	72.75m²