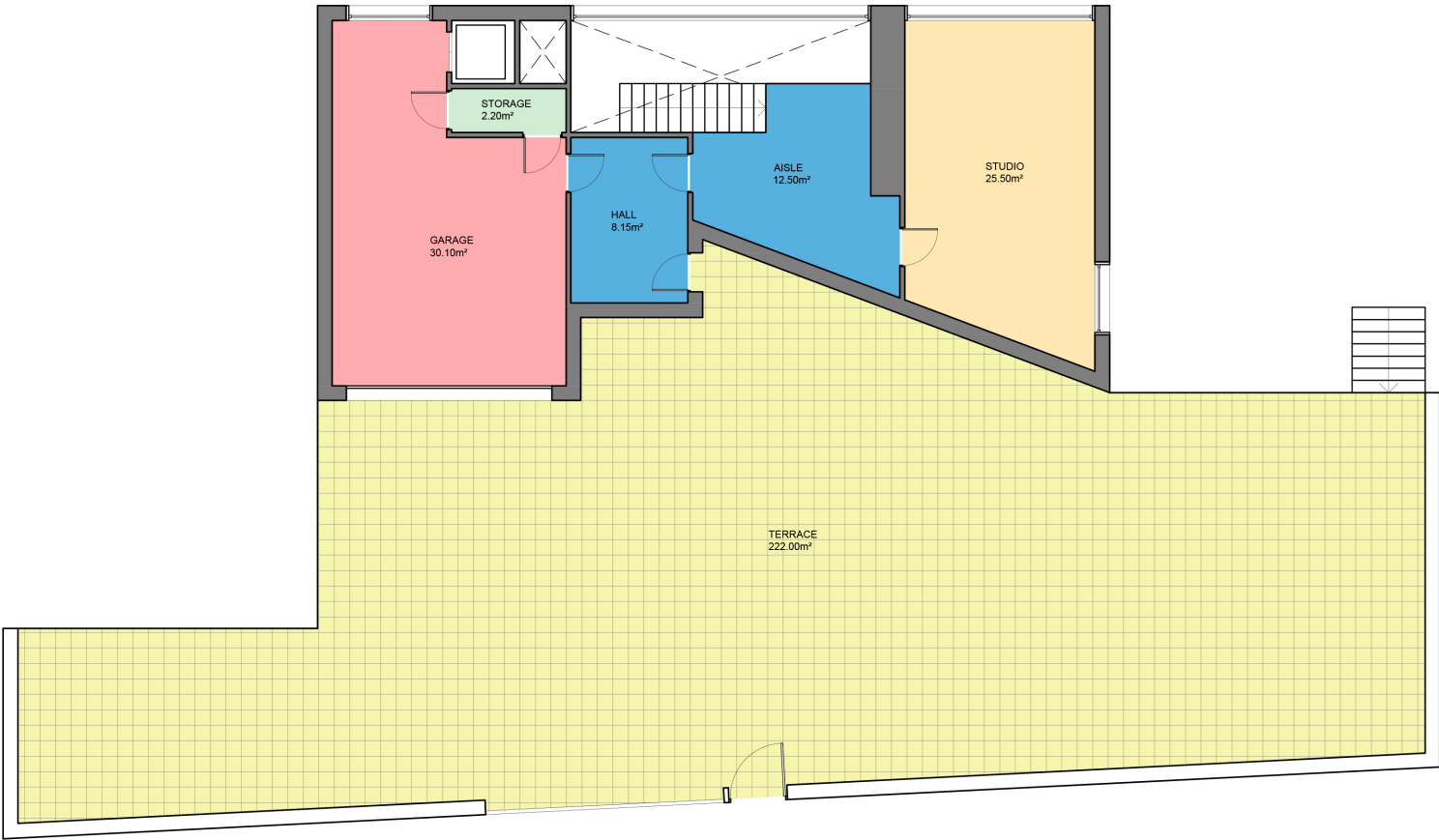


Measurements FLOOR	
INTERIOR (Useful surface) TOTAL	481.80m²
Exterior surface	722.10m²
Built surface TOTAL	622.55m²
Terrain surface (Building)	870.90m²
Terrain surface (not Building)	4284.50m²
Pool	38.70m²
TOTAL SURFACE	5877.50m²

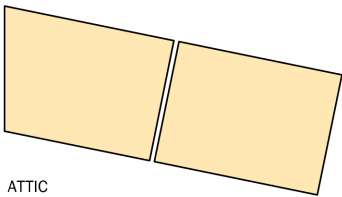
BCN20357



Scale in metres. Indicative only. Dimensions are approximate. All information contained here in is gathered from sources we believe to be reliable. However we cannot guarantee its accuracy and interested persons should rely on their own enquiries.

Measurements GROUND FLOOR	
INTERIOR (Useful surface)	78.45m²
Terrace	222.00m²
Built surface	112.90m²

BCN20357



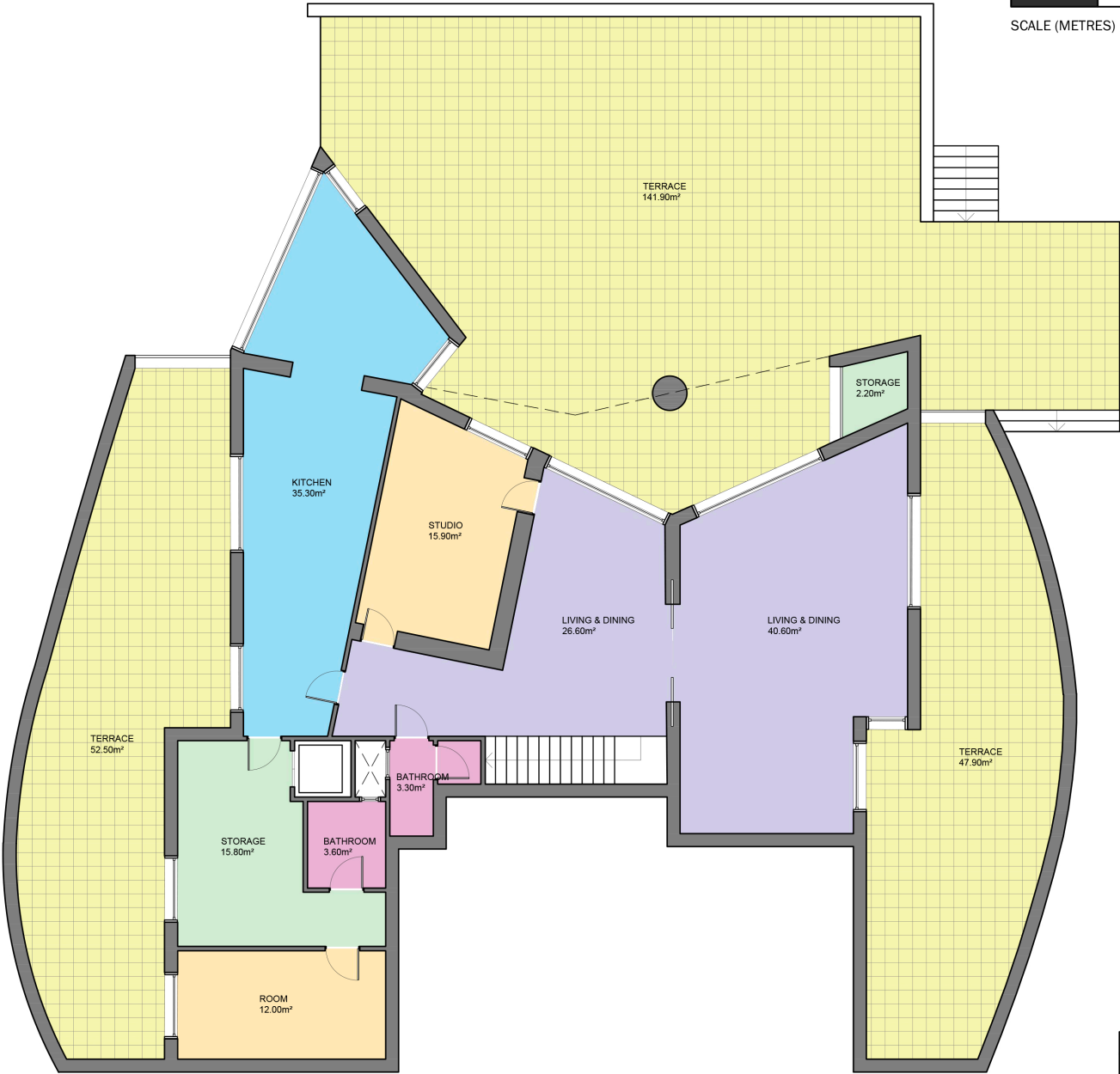
ATTIC



Scale in metres. Indicative only. Dimensions are approximate. All information contained here in is gathered from sources we believe to be reliable. However we cannot guarantee its accuracy and interested persons should rely on their own enquiries.

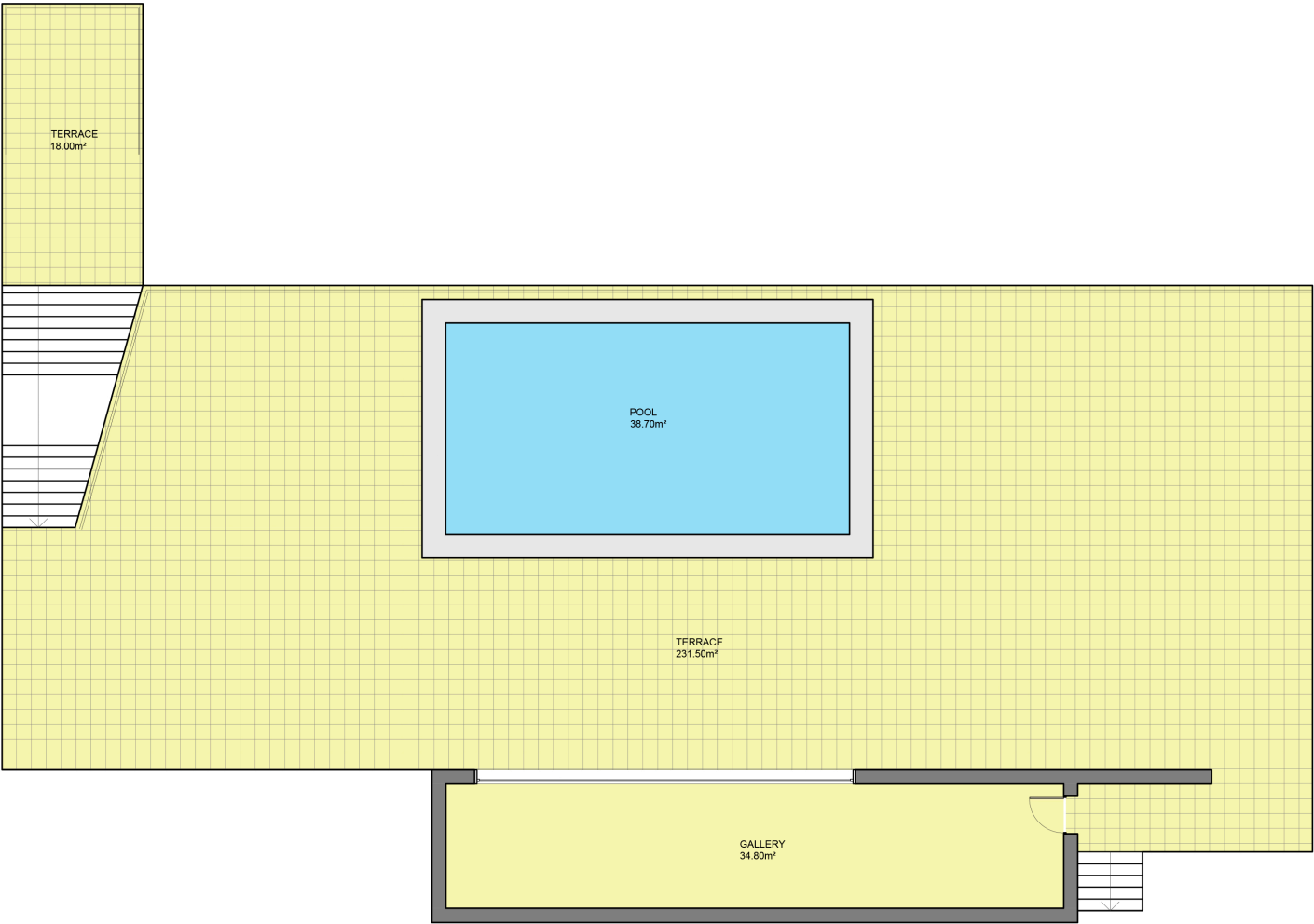
Measurements FLOOR -1	
INTERIOR (Useful surface)	213.25m²
Terrace	8.30m²
Built surface	270.15m²

BCN20357



Scale in metres. Indicative only. Dimensions are approximate. All information contained here in is gathered from sources we believe to be reliable. However we cannot guarantee its accuracy and interested persons should rely on their own enquiries.

Measurements FLOOR -2	
INTERIOR (Useful surface)	155.30m ²
Terrace	242.30m ²
Built surface	194.80m ²



Measurements POOL FLOOR	
INTERIOR (Useful surface)	34.80m ²
Terrace	249.50m ²
Pool	38.70m ²
Built surface	44.70m ²