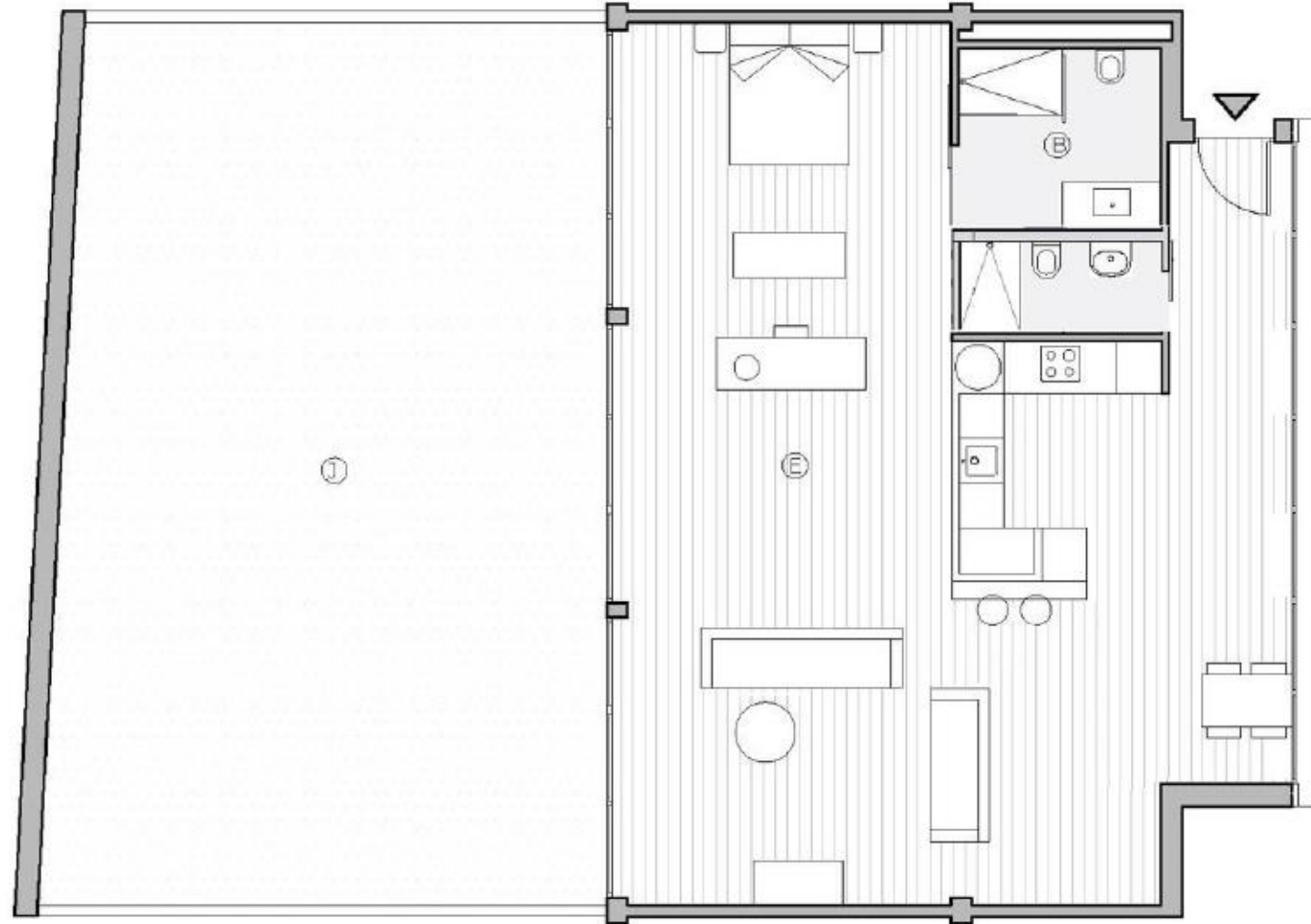
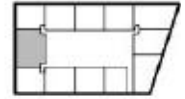


GOLDSMITH LOFTS



PB - 11^a



SUPERFICIE ÚTIL INTERIOR

ESPACIO CENTRAL	89.96 m ²
BAÑO 1	6.48 m ²
BAÑO 2	3.24 m ²

SUPERFICIE ÚTIL EXTERIOR

JARDÍN	86.15 m ²
SUPERFICIE ÚTIL EXTERIOR TOTAL	86.15 m ²

SUPERFICIE CONSTRUÍDA	109.63 m ²
-----------------------	-----------------------