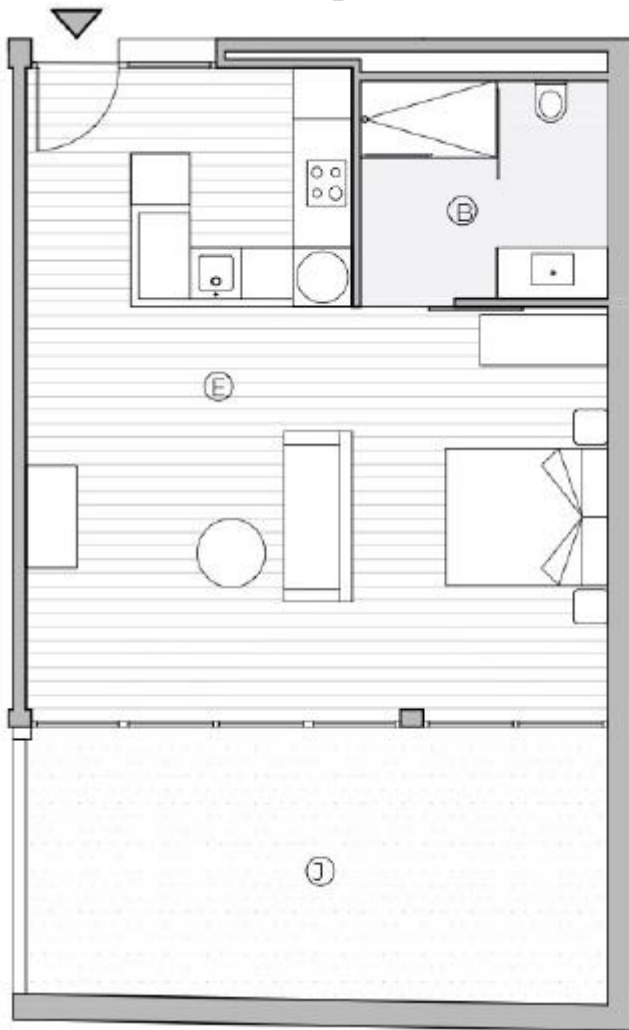
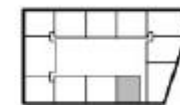


GOLDSMITH LOFTS



PB - 7^a



SUPERFICIE ÚTIL INTERIOR

ESPACIO CENTRAL	43.76 m ²
BAÑO	6.96 m ²

SUPERFICIE ÚTIL EXTERIOR

JARDÍN	21.71 m ²
SUPERFICIE ÚTIL EXTERIOR TOTAL	21.71 m ²

SUPERFICIE CONSTRUÍDA	59.04 m ²
-----------------------	----------------------