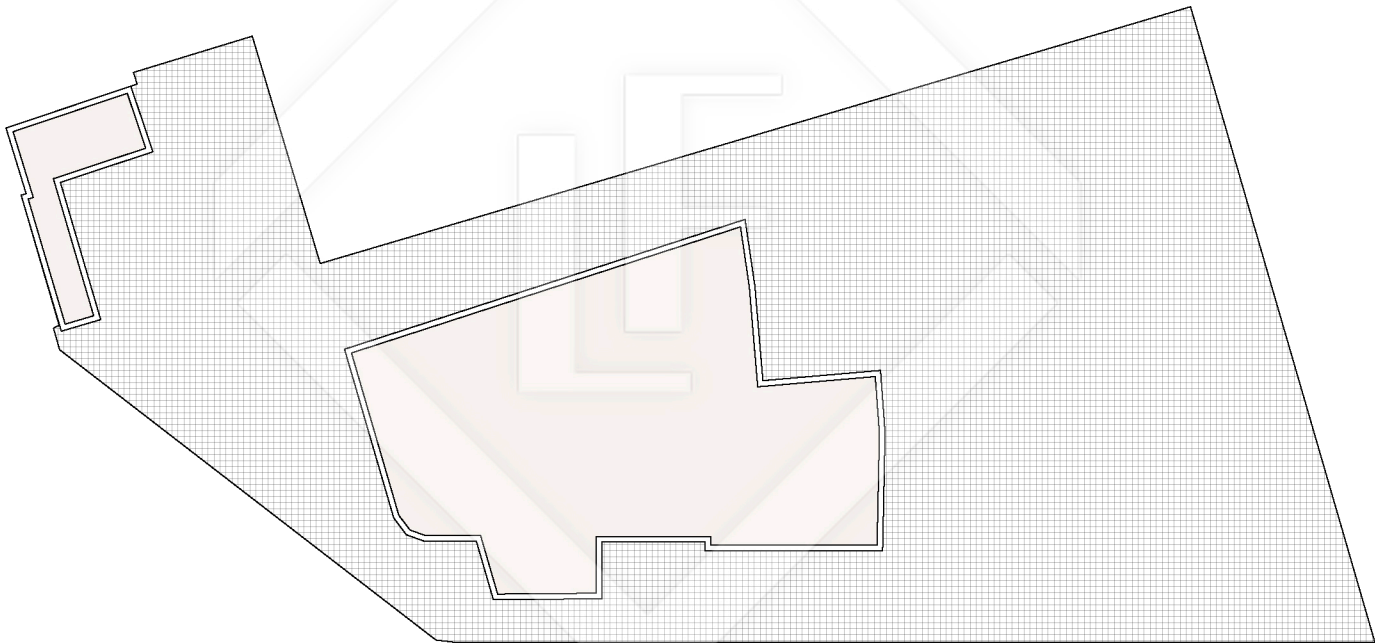


BCN16415



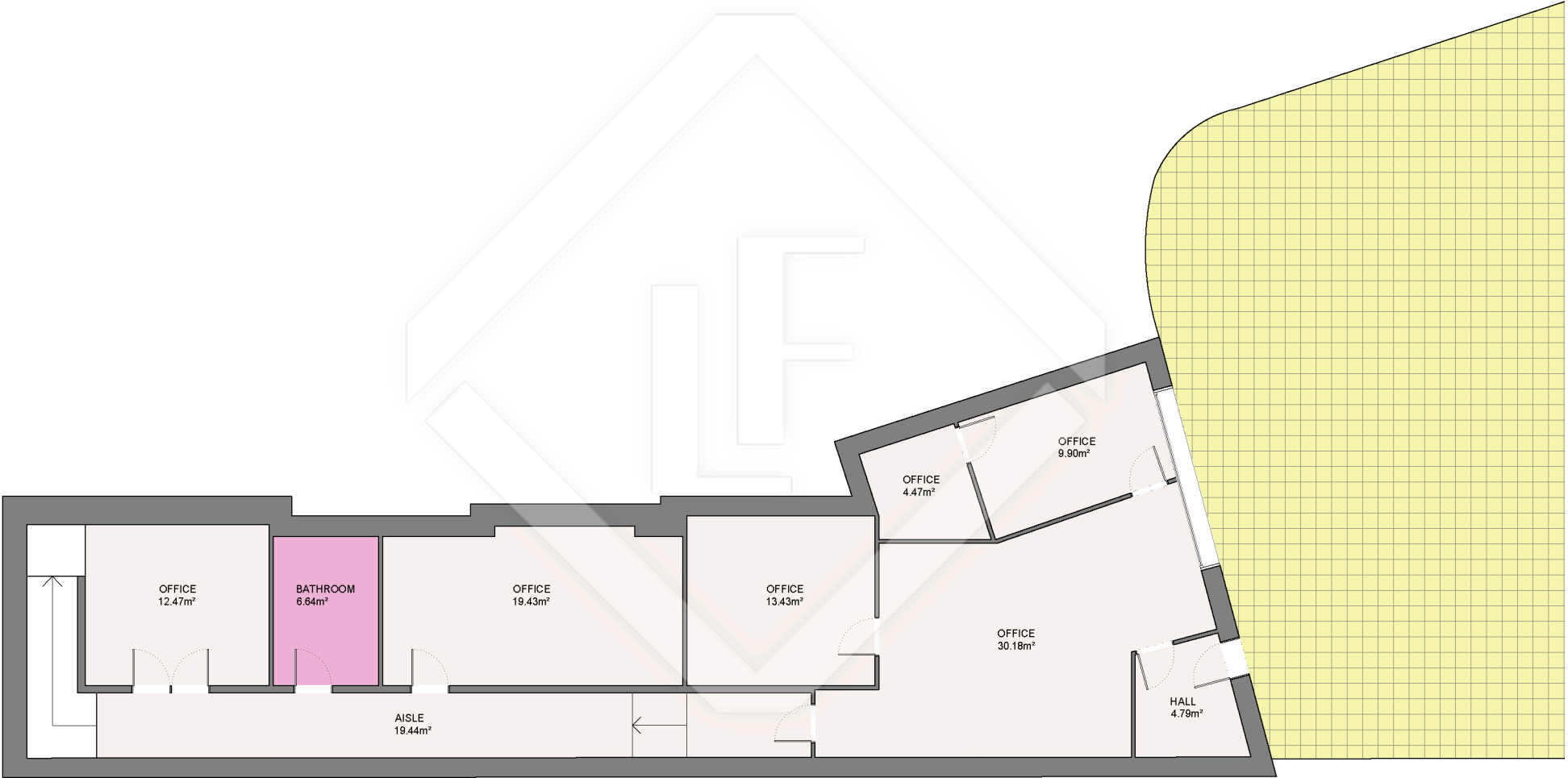
LUCAS FOX
INTERNATIONAL PROPERTIES



Scale in metres. Indicative only. Dimensions are approximate. All information contained here is gathered from sources we believe to be reliable. However we cannot guarantee its accuracy and interested persons should rely on their own enquiries.

| Measurements HOUSE | |
|--------------------|-----------------------|
| Built surface | 738.21m ² |
| Useful surface | 621.70m ² |
| Exterior surface | 1283.30m ² |
| Terrain | 1648.00m ² |

BCN16415



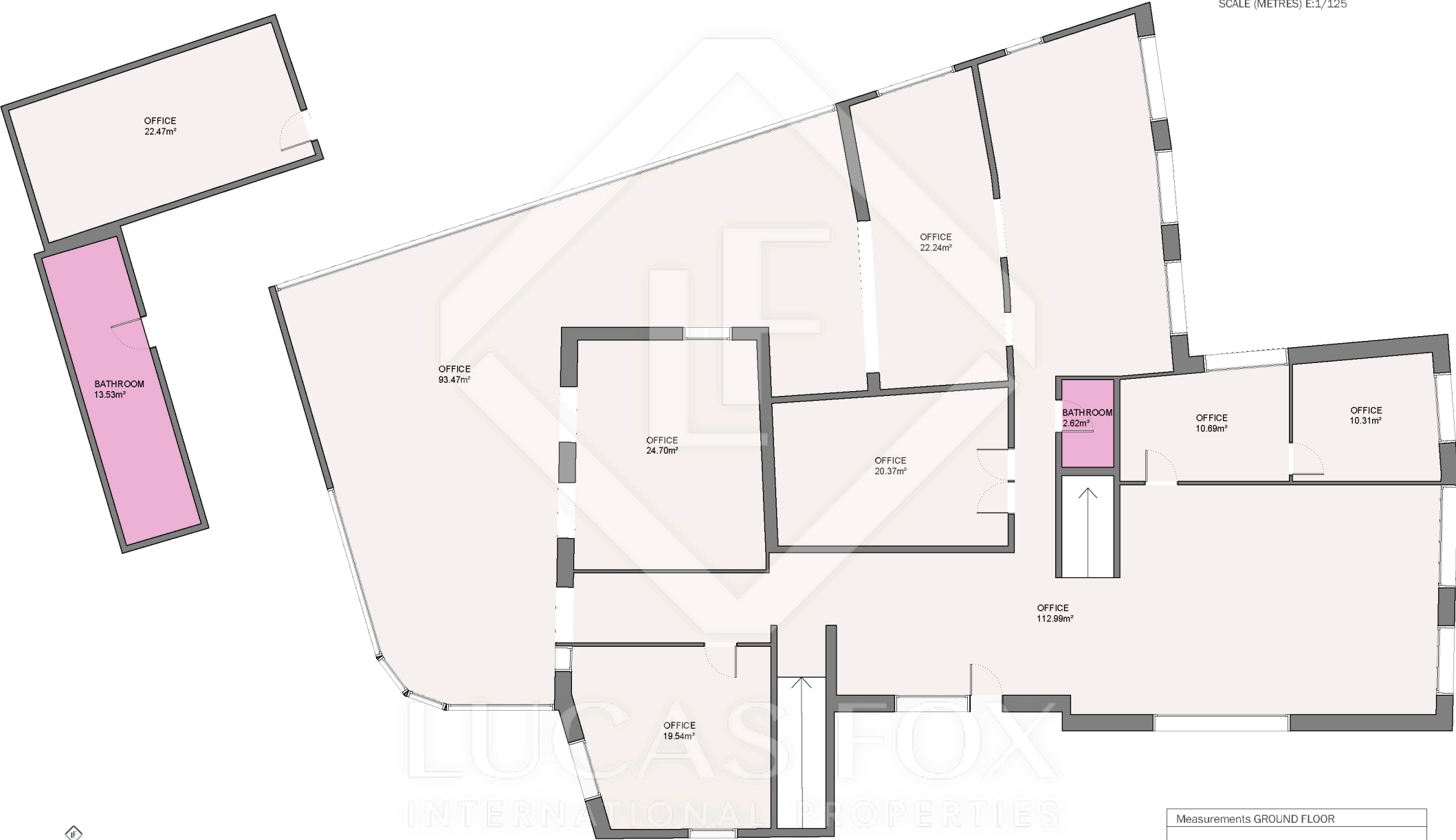
LUCAS FOX
INTERNATIONAL PROPERTIES



Scale in metres. Indicative only. Dimensions are approximate. All information contained here is gathered from sources we believe to be reliable. However we cannot guarantee its accuracy and interested persons should rely on their own enquiries.

| Measurements BASEMENT FLOOR | |
|-----------------------------|----------|
| Built surface | 159.65m² |
| Useful surface | 122.02m² |

BCN16415



Scale in metres. Indicative only. Dimensions are approximate. All information contained here is gathered from sources we believe to be reliable. However we cannot guarantee its accuracy and interested persons should rely on their own enquiries.

| Measurements GROUND FLOOR | |
|---------------------------|-----------|
| Built surface | 407.08m² |
| Useful surface | 353.74m² |
| Exterior surface | 1255.59m² |

BCN16415



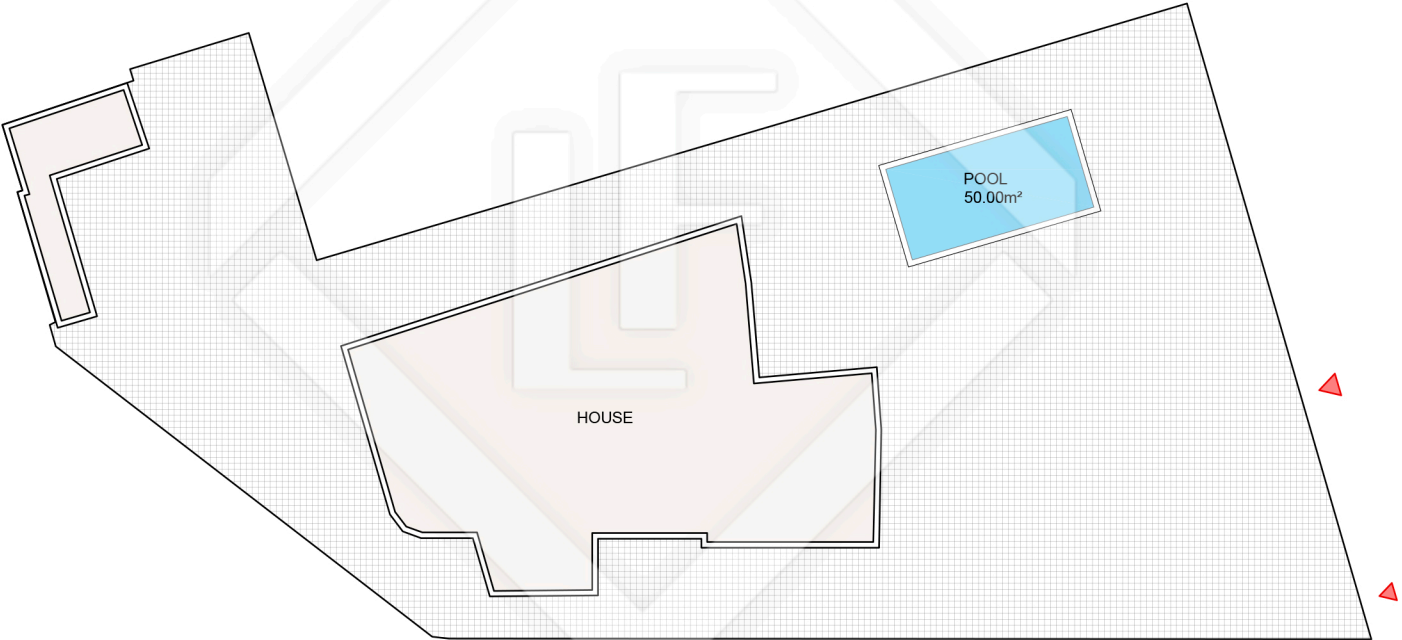
LUCAS FOX
INTERNATIONAL PROPERTIES



Scale in metres. Indicative only. Dimensions are approximate. All information contained here is gathered from sources we believe to be reliable. However we cannot guarantee its accuracy and interested persons should rely on their own enquiries.

| Measurements FIRST FLOOR | |
|--------------------------|----------------------|
| Built surface | 171.48m ² |
| Useful surface | 145.95m ² |
| Exterior surface | 27.71m ² |

BCN16415 Propuesta



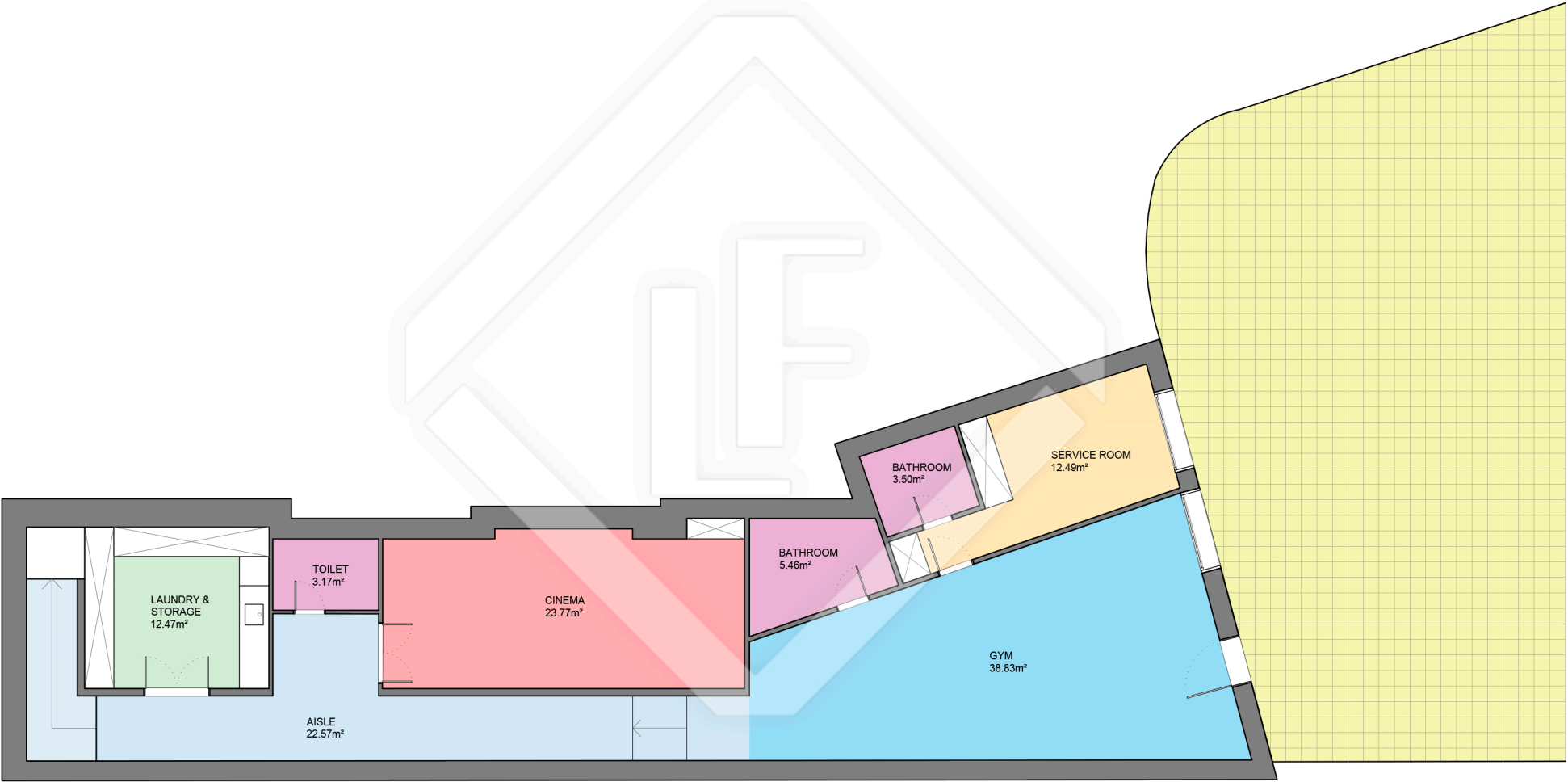
LUCAS FOX
INTERNATIONAL PROPERTIES



Scale in metres. Indicative only. Dimensions are approximate. All information contained here is gathered from sources we believe to be reliable. However we cannot guarantee its accuracy and interested persons should rely on their own enquiries.

| Measurements HOUSE | |
|--------------------|-----------------------|
| Built surface | 738.21m ² |
| Useful surface | 620.89m ² |
| Exterior surface | 1286.55m ² |
| Terrain | 1775.00m ² |

BCN16415 Propuesta



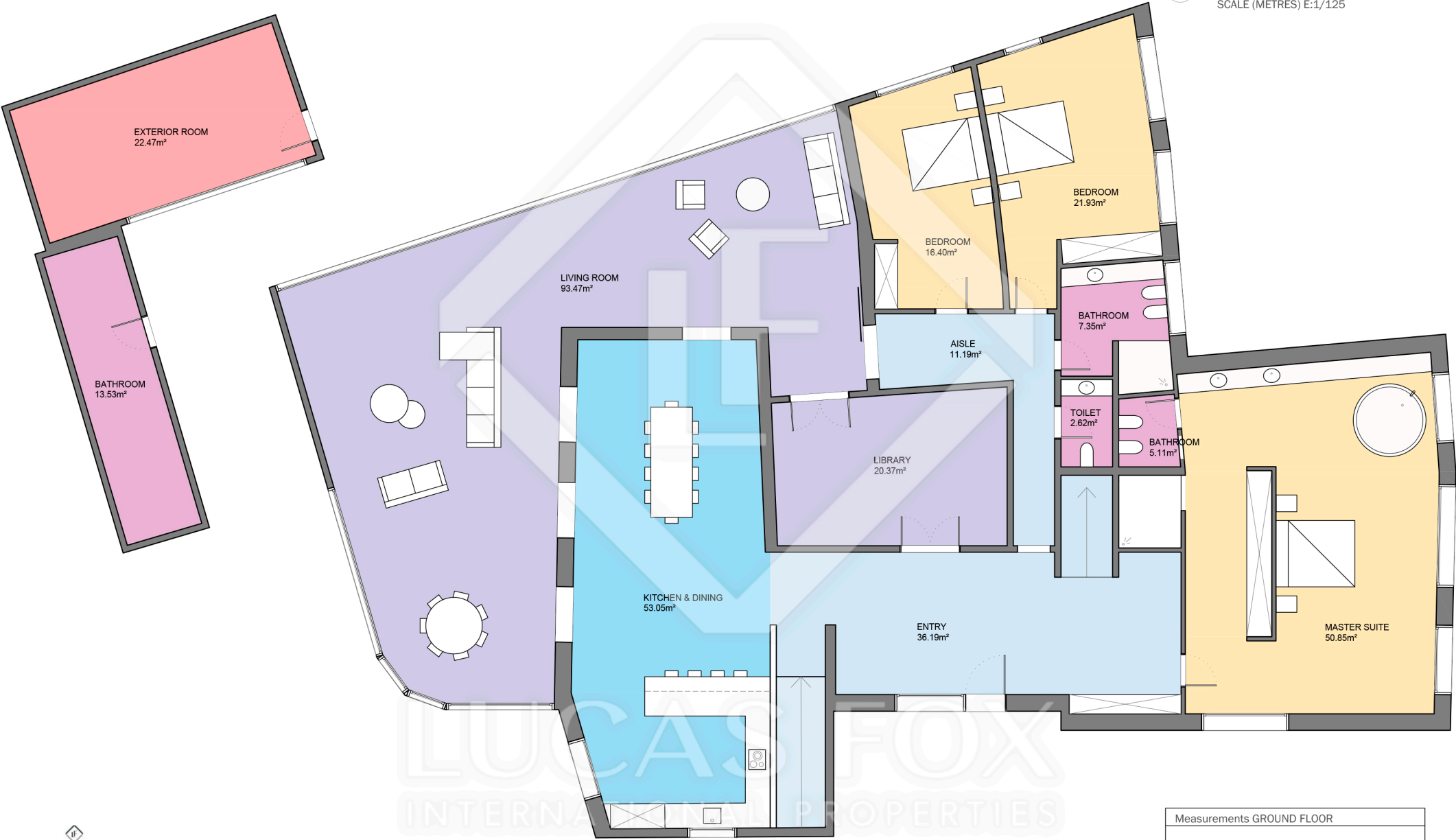
LUCAS FOX
INTERNATIONAL PROPERTIES



Scale in metres. Indicative only. Dimensions are approximate. All information contained here is gathered from sources we believe to be reliable. However we cannot guarantee its accuracy and interested persons should rely on their own enquiries.

| Measurements BASEMENT FLOOR | |
|-----------------------------|----------------------|
| Built surface | 159.65m ² |
| Useful surface | 122.25m ² |

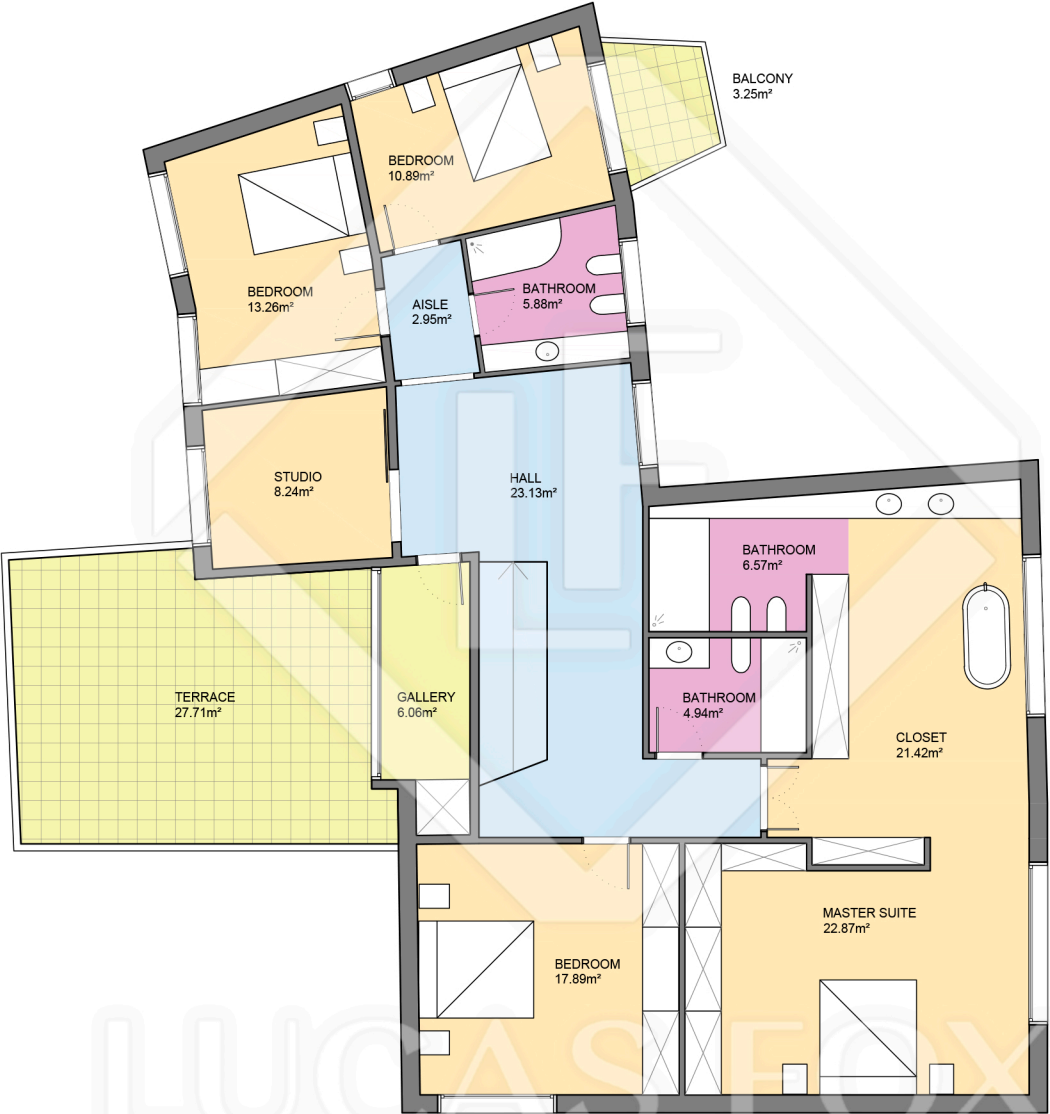
BCN16415 Propuesta



Scale in metres. Indicative only. Dimensions are approximate. All information contained here is gathered from sources we believe to be reliable. However we cannot guarantee its accuracy and interested persons should rely on their own enquiries.

| Measurements GROUND FLOOR | |
|---------------------------|-----------|
| Built surface | 407.08m² |
| Useful surface | 354.53m² |
| Exterior surface | 1255.59m² |

BCN16415 Propuesta



LUCAS FOX
INTERNATIONAL PROPERTIES



Scale in metres. Indicative only. Dimensions are approximate. All information contained here is gathered from sources we believe to be reliable. However we cannot guarantee its accuracy and interested persons should rely on their own enquiries.

| Measurements FIRST FLOOR | |
|--------------------------|----------------------|
| Built surface | 171.48m ² |
| Useful surface | 144.11m ² |
| Exterior surface | 30.96m ² |