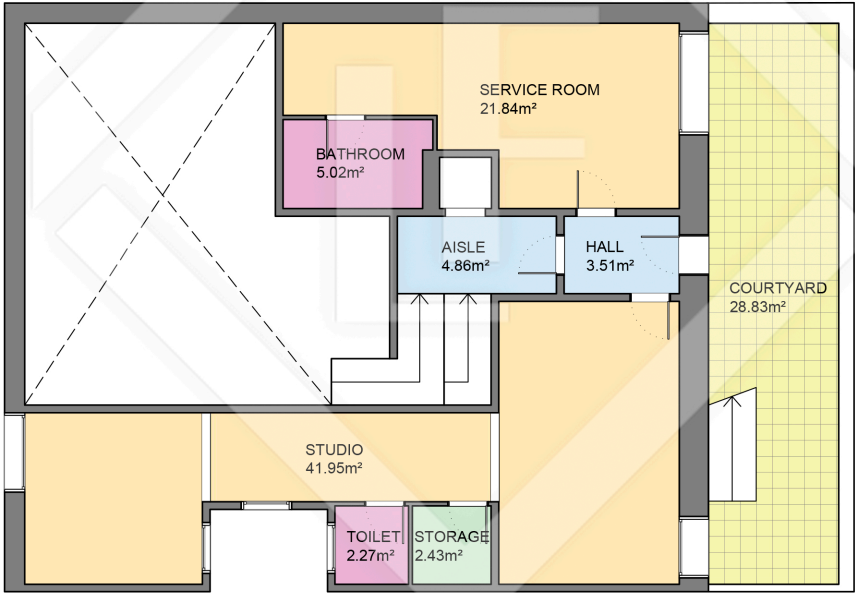


BASEMENT -2

Measurements TOTAL FLOOR	
Built surface	838.73m²
Useful surface	586.05m²
Exterior surface	340.45m²
Pool surface	29.21m²

Measurements BASEMENT -2 FLOOR	
Built surface	236.40m²
Useful surface	200.13m²
Exterior surface	54.78m²



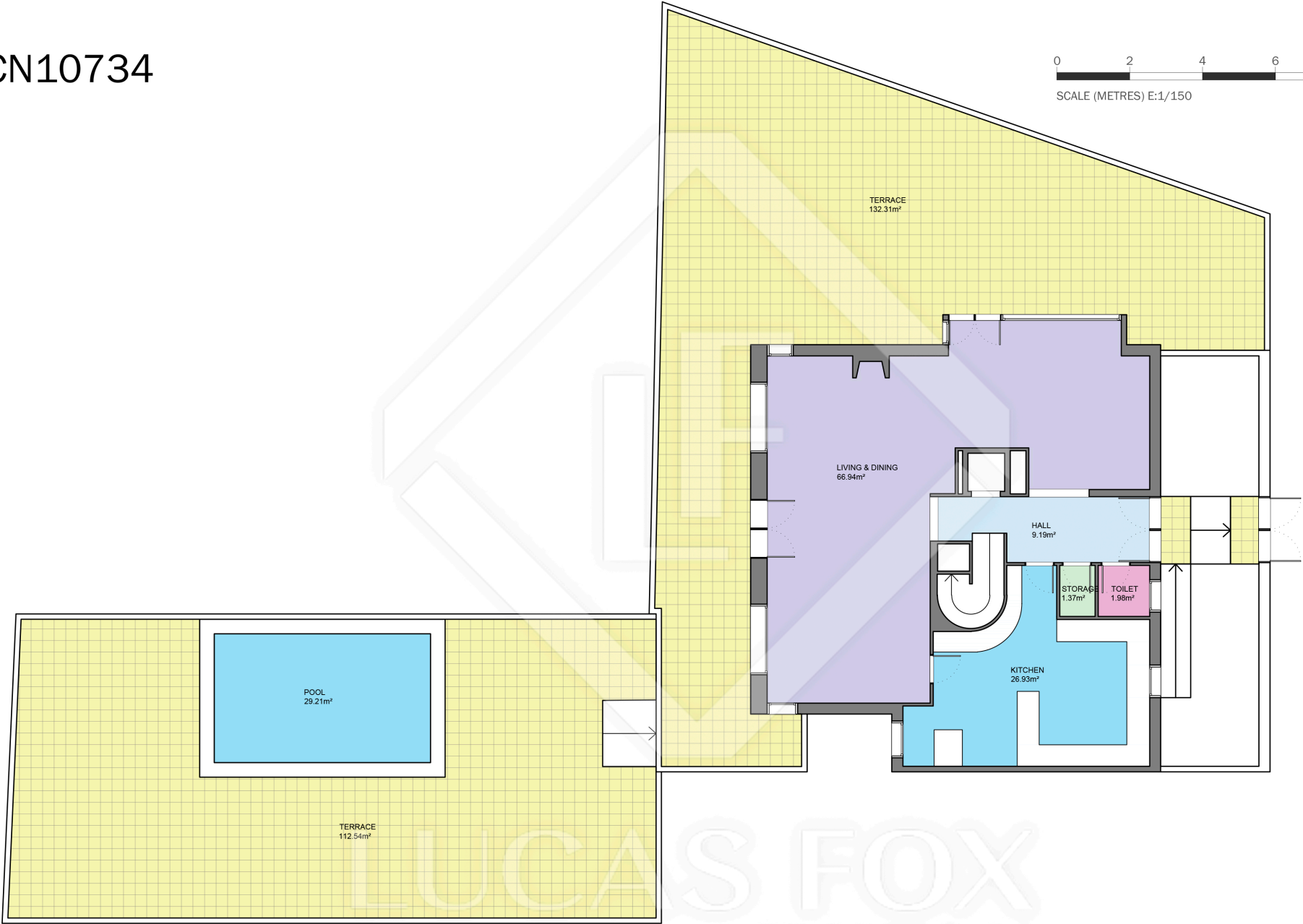
BASEMENT -1



Scale in metres. Indicative only. Dimensions are approximate. All information contained here is gathered from sources we believe to be reliable. However we cannot guarantee its accuracy and interested persons should rely on their own enquiries.

Measurements BASEMENT -1 FLOOR	
Built surface	159.25m²
Useful surface	81.88m²
Exterior surface	26.85m²

BCN10734

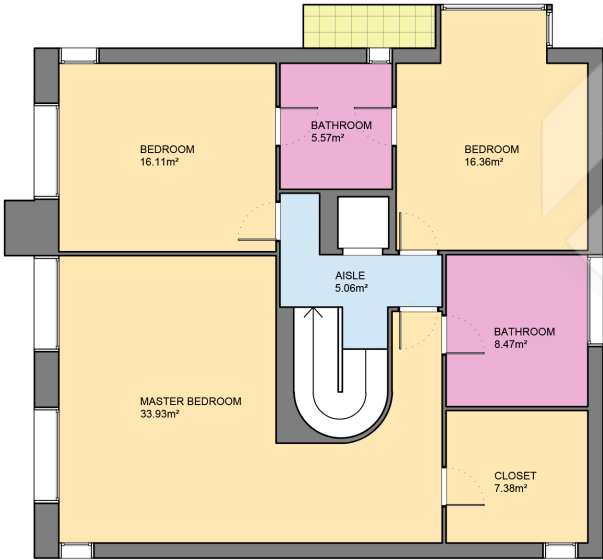


GROUND FLOOR



Scale in metres. Indicative only. Dimensions are approximate. All information contained here is gathered from sources we believe to be reliable. However we cannot guarantee its accuracy and interested persons should rely on their own enquiries.

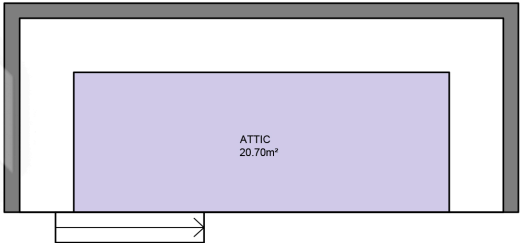
Measurements GROUND FLOOR	
Built surface	129.93m ²
Useful surface	107.06m ²
Exterior surface	247.92m ²
Pool surface	29.21m ²



FIRST FLOOR



SECOND FLOOR



ATTIC FLOOR



Scale in metres. Indicative only. Dimensions are approximate. All information contained here is gathered from sources we believe to be reliable. However we cannot guarantee its accuracy and interested persons should rely on their own enquiries.

Measurements FLOOR	
FIRST FLOOR	
Built surface	116.72m²
Useful surface	92.88m²
Exterior surface	2.25m²
SECOND FLOOR	
Built surface	103.88m²
Useful surface	83.27m²
Exterior surface	8.64m²
ATTIC FLOOR	
Built surface	42.33m²
Useful surface	20.70m²