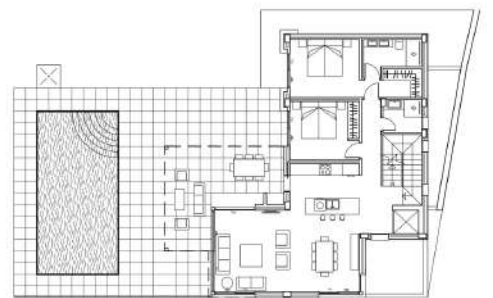
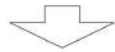
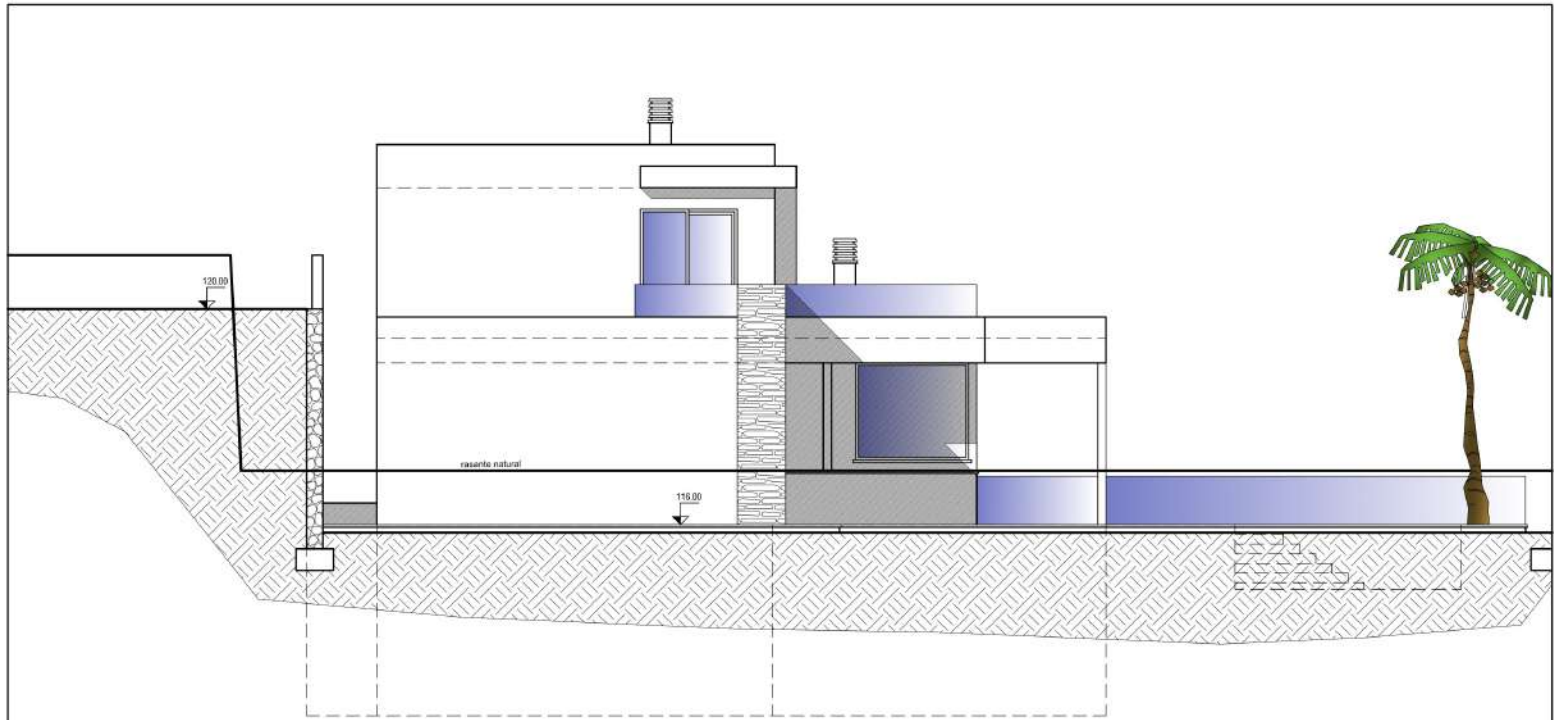


ALZADO ACCESO

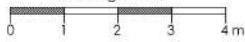
© Pintado y Rico Arquitectos, S.L.

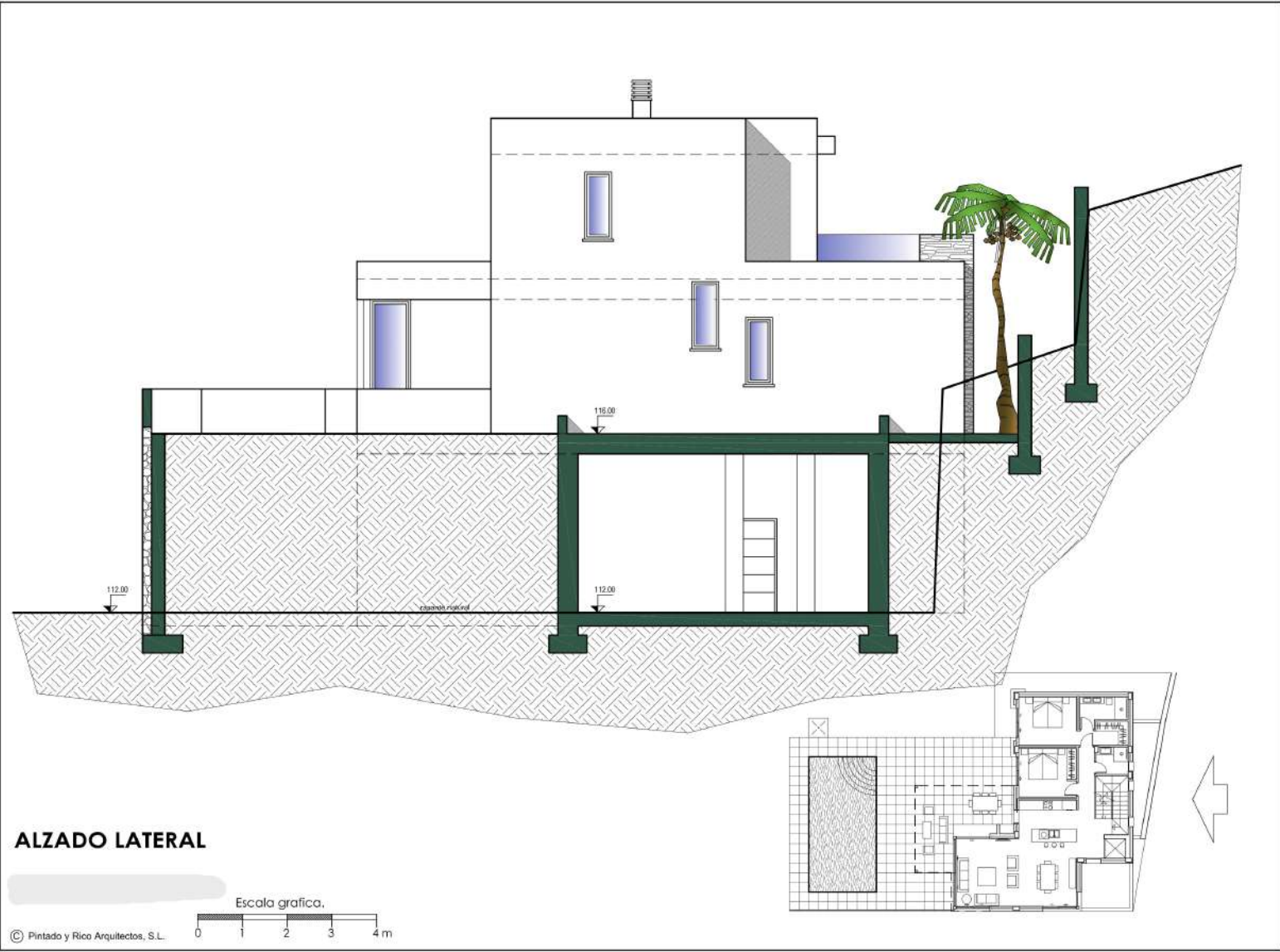


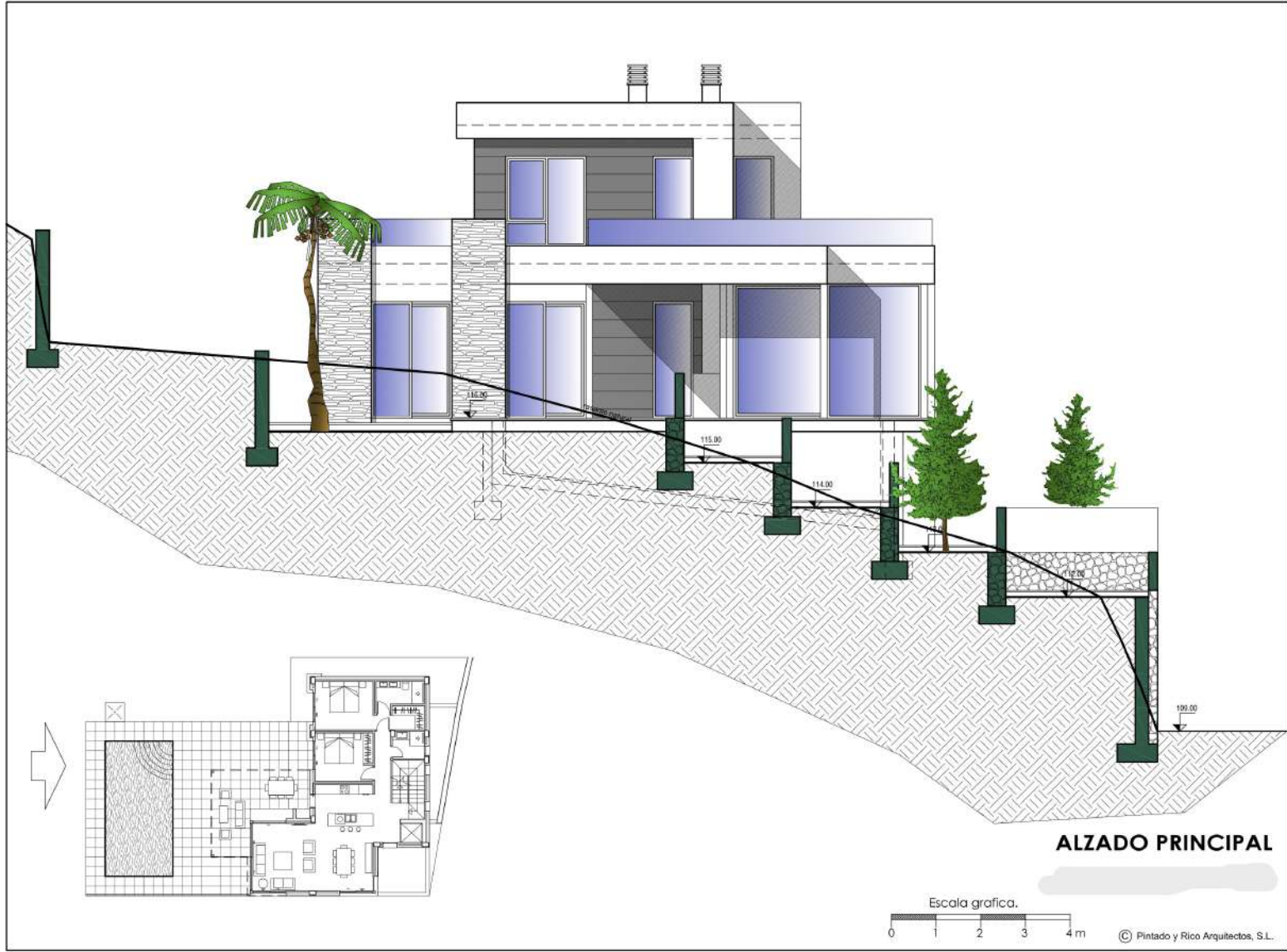


ALZADO LATERAL

Escala grafica.





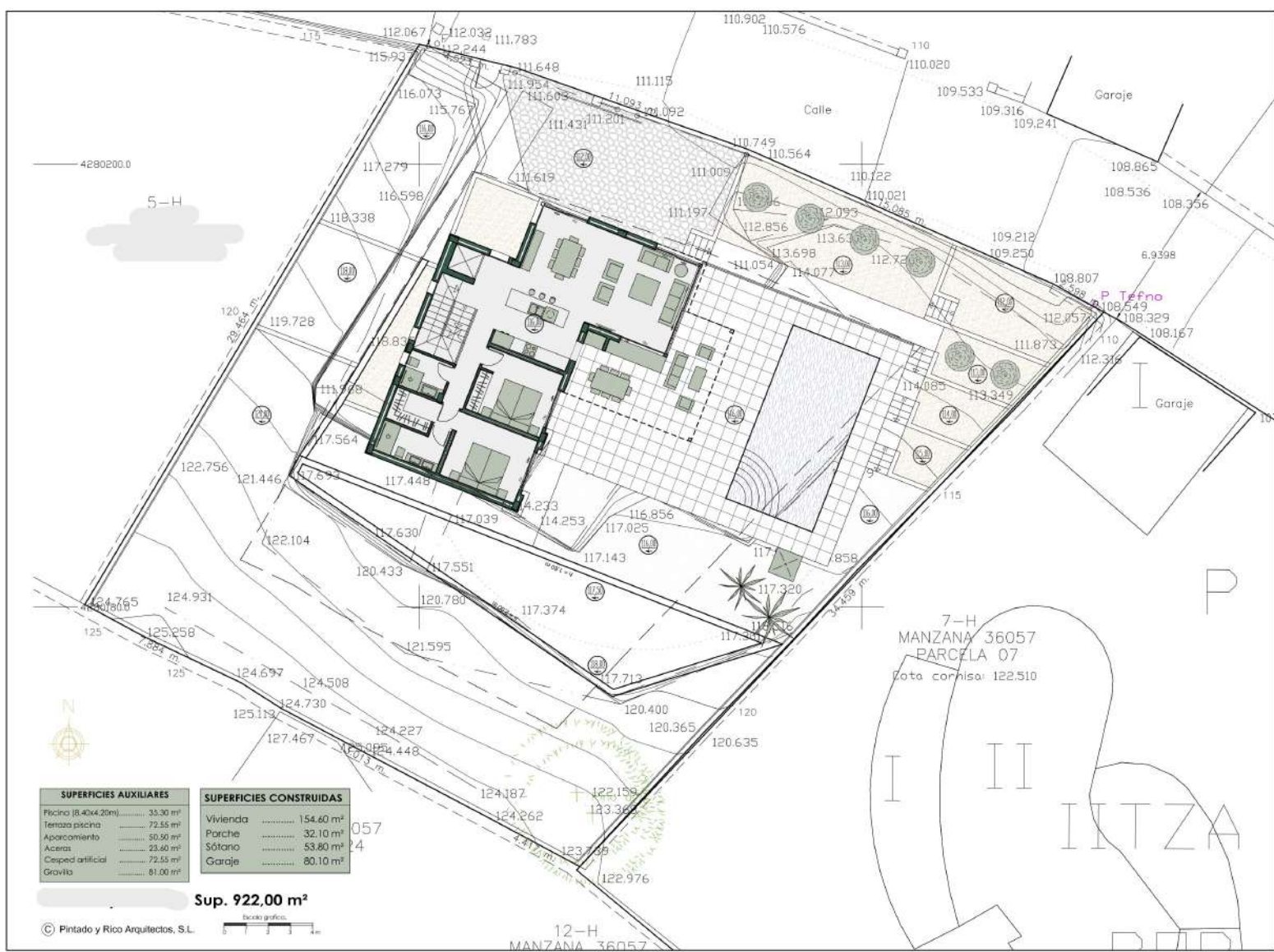


ALZADO PRINCIPAL

Escala grafica.

0 1 2 3 4 m

© Pintado y Rico Arquitectos, S.L.



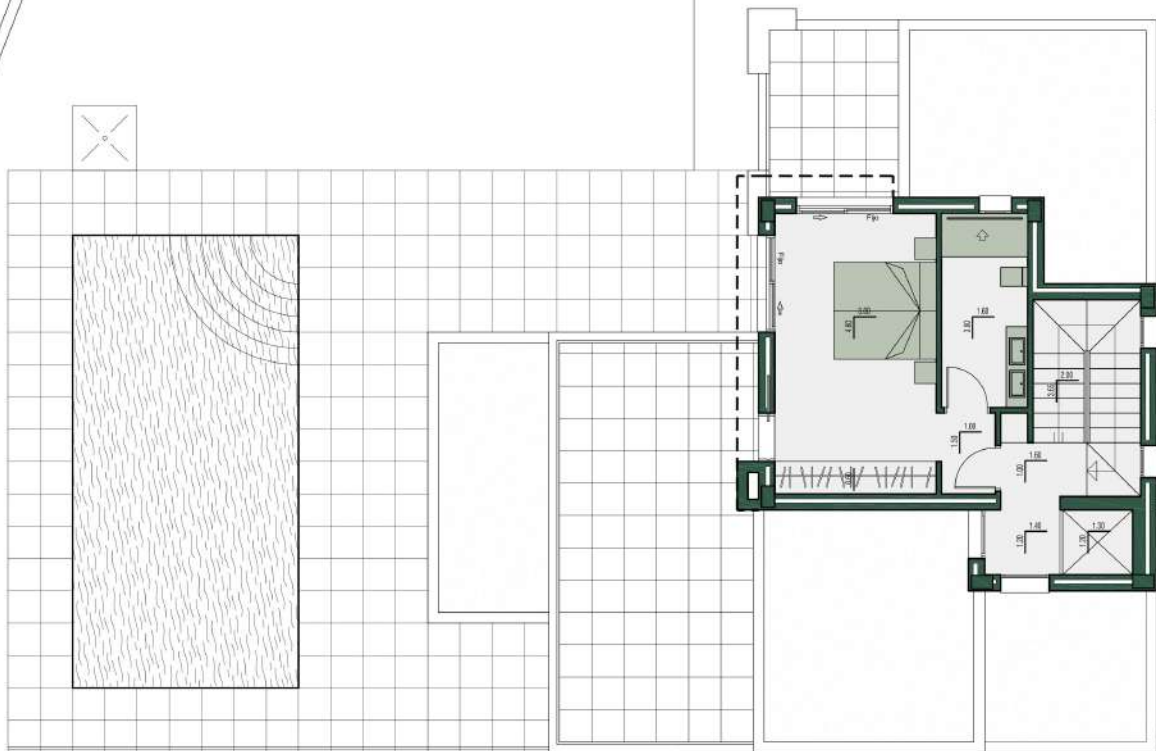
| SUPERFICIES AUXILIARES | | SUPERFICIES CONSTRUIDAS | |
|------------------------|----------------------|-------------------------|-----------------------|
| Piscina (8.40x4.20m) | 35.30 m ² | Vivienda | 154.60 m ² |
| Terrazo piscina | 72.55 m ² | Porche | 32.10 m ² |
| Aparcamiento | 50.50 m ² | Sótano | 53.80 m ² |
| Aceras | 23.40 m ² | Garaje | 80.10 m ² |
| Césped artificial | 72.55 m ² | | |
| Gravilla | 81.00 m ² | | |

Sup. 922,00 m²

12-H
MANZANA 36057

7-H
MANZANA 36057
PARCELA 07
Cota cornisa: 122.510

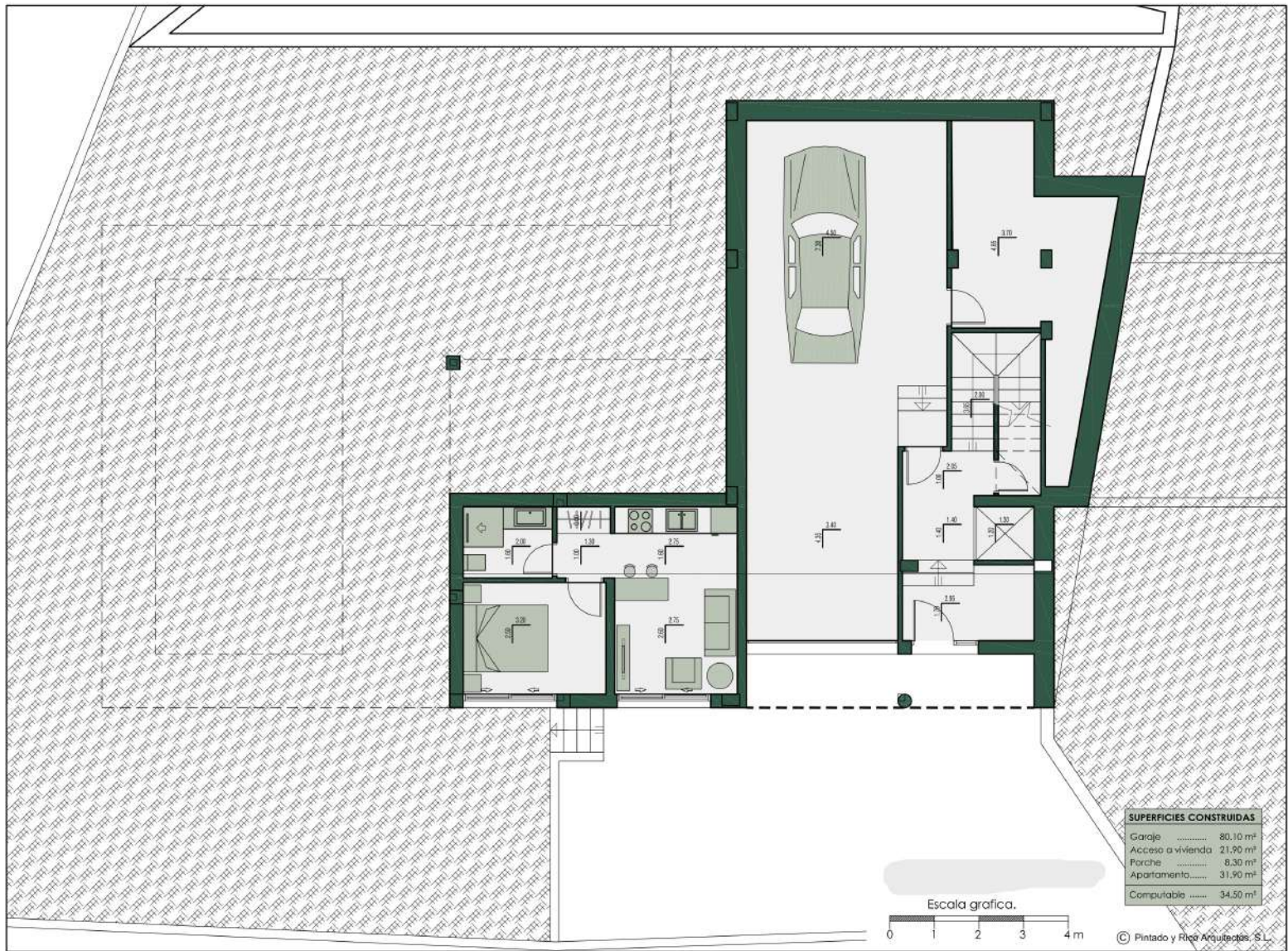
IITZA



SUPERFICIES CONSTRUIDAS

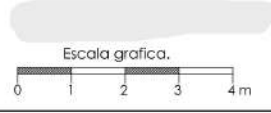
| | |
|---------------------|----------------------|
| Vivienda | 44,80 m ² |
| Terrazo transitabl. | 49,00 m ² |
| Terrazo transitabl. | 27,80 m ² |
| Terrazo no trans. | 12,00 m ² |

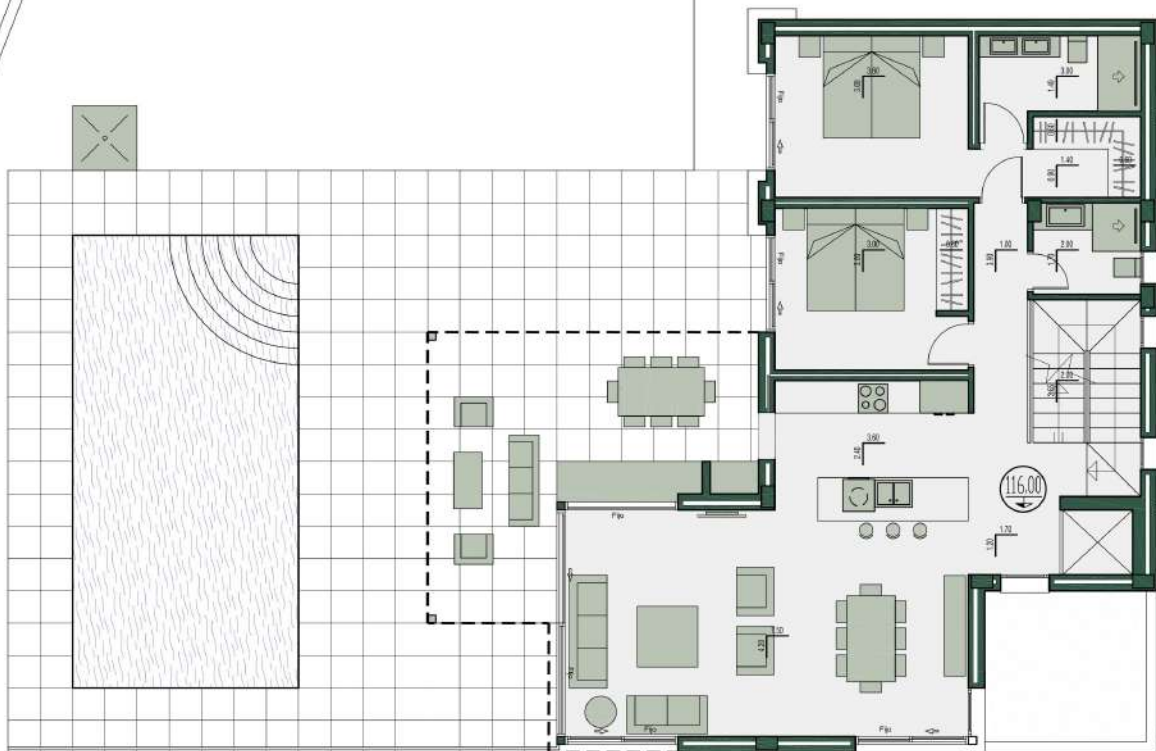




SUPERFICIES CONSTRUIDAS

| | |
|-------------------------|----------------------|
| Garaje | 80.10 m ² |
| Acceso a vivienda | 21.90 m ² |
| Porche | 8.30 m ² |
| Apartamento | 31.90 m ² |
| Computable | 34.50 m ² |





| SUPERFICIES AUXILIARES | | SUPERFICIES CONSTRUIDAS | |
|---------------------------|----------------------|--|-----------------------|
| Piscina (8.40x4.20m)..... | 35.30 m ² | Vivienda | 109.60 m ² |
| Terraza piscina | 72.55 m ² | Porche | 23.60 m ² |
| Aparcamiento | 50.50 m ² | Terraza no transitab. 12.40 m ² | |
| Aceras | 23.60 m ² | Terraza no transitab. 10.40 m ² | |
| Césped artificial | 72.55 m ² | | |
| Gravilla | 81.00 m ² | | |

