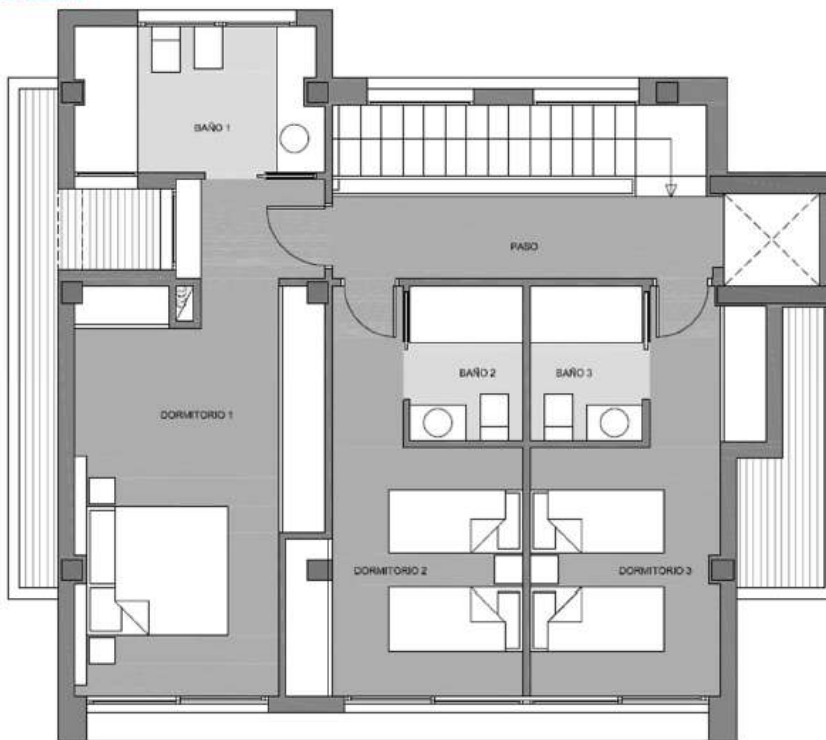


VILLA TYPE CEREZO JC – F PLOT M5



		SUP.
GRAND FLOOR	ENTRANCE (100%)	4,11
	HALL	2,94
	LIVING ROOM	45,73
	KITCHEN	12,21
	BATHROOM	2,15
	STAIRS	6,04
	LAUNDRYROOM (100%)	4,87
	TERRACE 1 (100%)	19,22
	TOTAL USEFUL SURFACE GRAND FLOOR	97,27
FIRST FLOOR	CORRIDOR	6,21
	BEDROOM 1	22,10
	BEDROOM 2	13,18
	BEDROOM 3	12,98
	BATHROOM 1	7,05
	BATHROOM 2	3,52
	BATHROOM 3	3,52
TOTAL USEFUL SURFACE FIRST FLOOR	68,56	
TOTAL USEFUL SURFACE	165,83	
TOTAL BUILDED SURFACE	194,71	



		SUP.
GRANDFLOOR	ENTRANCE (100%)	4,11
	HALL	2,94
	LIVING ROOM	45,73
	KITCHEN	12,21
	BATHROOM	2,15
	STAIRS	6,04
	LAUNDRYROOM (100%)	4,87
	TERRACE 1 (100%)	19,22
TOTAL USEFUL SURFACE GRANDFLOOR		97,27
FIRSTFLOOR	CORRIDOR	6,21
	BEDROOM 1	22,10
	BEDROOM 2	13,18
	BEDROOM 3	12,98
	BATHROOM 1	7,05
	BATHROOM 2	3,52
	BATHROOM 3	3,52
TOTAL USEFUL SURFACE FIRST FLOOR		68,56
TOTAL USEFUL SURFACE		165,83
TOTAL BUILDED SURFACE		194,71