

An aerial photograph of a coastal city at sunset. The sky is a mix of blue and orange, with wispy clouds. In the background, a range of mountains is visible. The city below is densely packed with buildings and greenery, situated along the coast. The text "18 INDIVIDUALLY DESIGNED SUSTAINABLE VILLAS" is overlaid in white, bold, sans-serif font in the center of the image.

18 INDIVIDUALLY DESIGNED SUSTAINABLE VILLAS

VILLA
Nº7

VILLA Nº7

Each state-of-the-art design-led home will be quite unlike anything that has gone before. In a climate that lends itself to outdoor living, these villas will work as well outside as they do inside, if one can tell the difference. The outside/inside concept is found in each villa, with the lounge and terrace seamlessly merging into one huge living space.

In key parts of the villas, both at ground level and upstairs, the windows will disappear into the walls, ensuring perfectly clear views and bringing the outside in. A combination of custom-designed furniture and world-leading brands along with a stunning selection of artwork makes these fabulous homes something to be truly proud of.





VILLA N°7

SECOND FLOOR	20,94 m ²
FIRST FLOOR	144,29 m ²
GROUND FLOOR	111,36 m ²
BASEMENT	243,09 m ²

TOTAL 519,68 m²

TERRACES	39,16 m ²
PERGOLAS	48,69 m ²
CARPORT	41,44 m ²
COMMON AREA	8,70 m ²

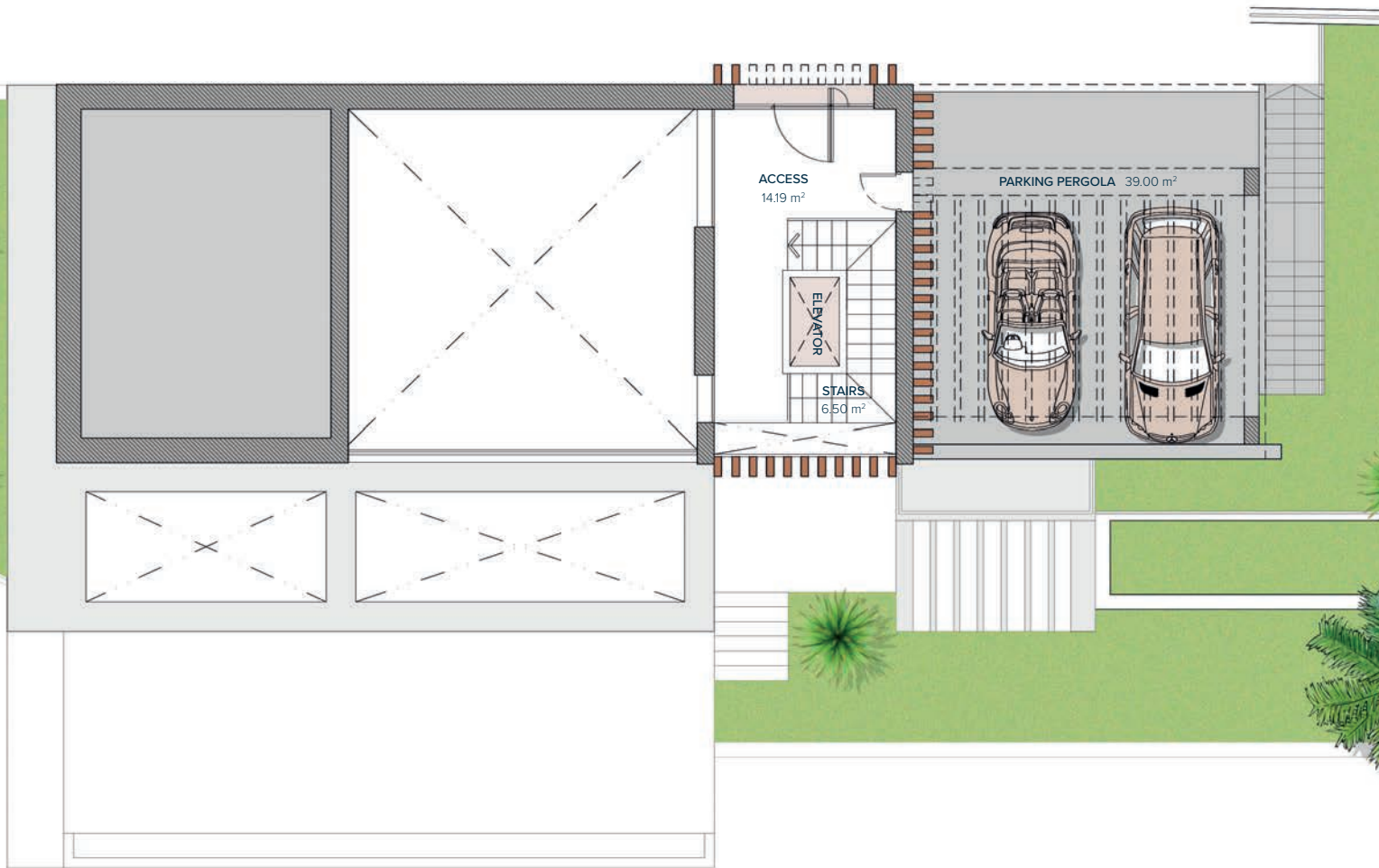
TOTAL 657,67 m²

PLOT 1.337,00 m²

GARDEN	137,49 m ²
SWIMMING POOL	56,43 m ²

TOTAL USEFUL AREA 483,87 m²
DECREE 218/2005

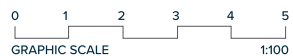
These images are not contractual but only for illustrative purposes. The images are subject to technical, legal or commercial modifications approved by the project management or the competent authority. The 3D images corresponding to the facades, common elements, and the rest of the spaces are merely indicative and will be subject to verification or Modification in the technical projects. The furniture of the 3D images is not included and the equipment of the villas will be indicated in the corresponding building and quality specifications. The energy certification corresponds with the one established in the project in process. All the information and documentation will be provided according to the terms established in the Royal Decree 515/1989 and in the rest of the autonomous or state regulations currently in force that could complement the Mentioned Decree.



VILLA N°7

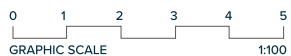
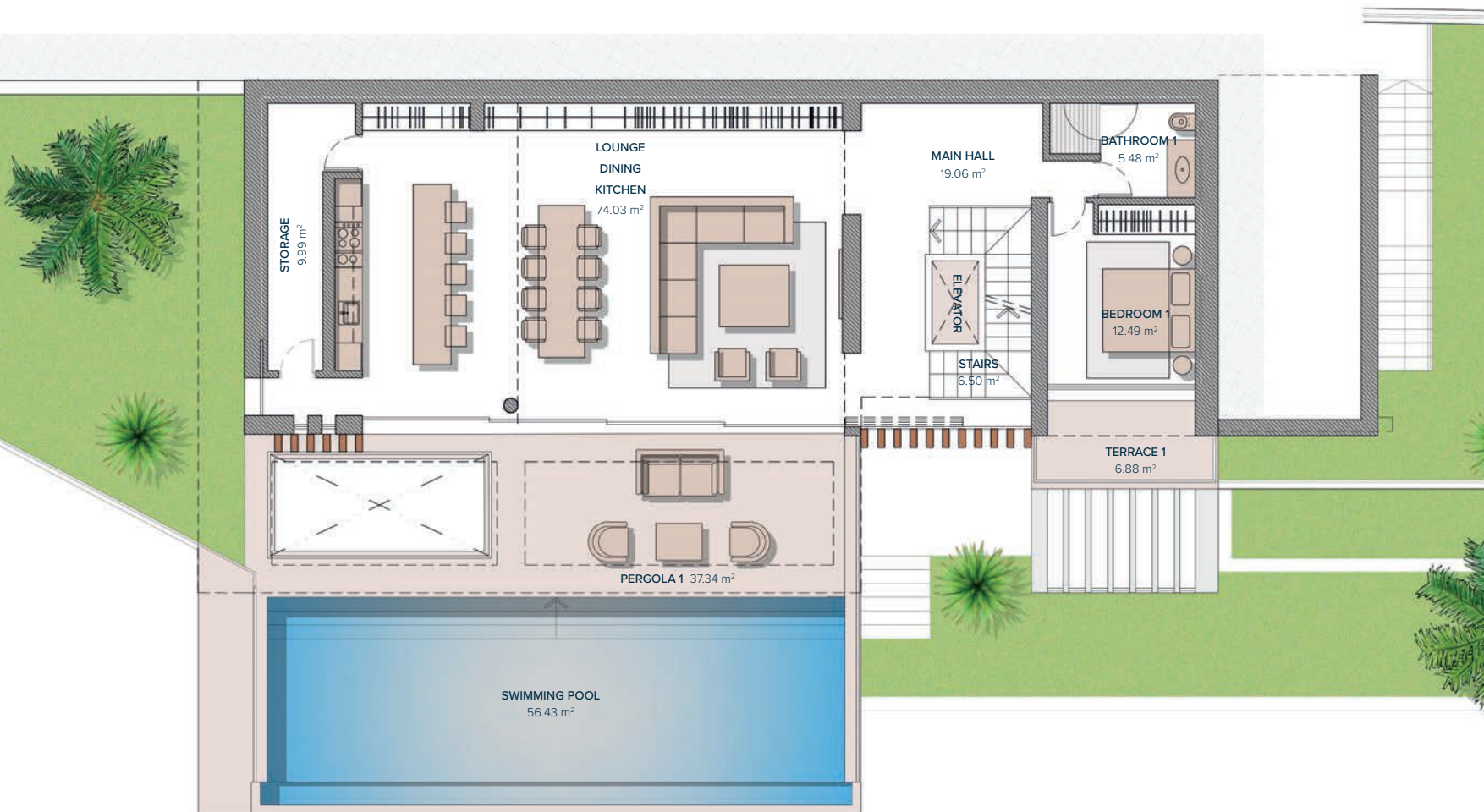
SECOND FLOOR ENTRANCE

ACCESS	14,19 m ²
STAIRS	6,50 m ²
TOTAL	20,69 m²
PARKING (PERGOLA)	39,00 m ²
TOTAL	39,00 m²



Entrance	2
	1
	0
	-1

These images are not contractual but only for illustrative purposes. The images are subject to technical, legal or commercial modifications approved by the project management or the competent authority. The 3D images corresponding to the facades, common elements, and the rest of the spaces are merely indicative and will be subject to verification or Modification in the technical projects. The furniture of the 3D images is not included and the equipment of the villas will be indicated in the corresponding building and quality specifications. The energy certification corresponds with the one established in the project in process. All the information and documentation will be provided according to the terms established in the Royal Decree 515/1989 and in the rest of the autonomous or state regulations currently in force that could complement the Mentioned Decree.



Entrance	2
	1
	0
	-1

VILLA N°7

FIRST FLOOR

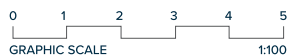
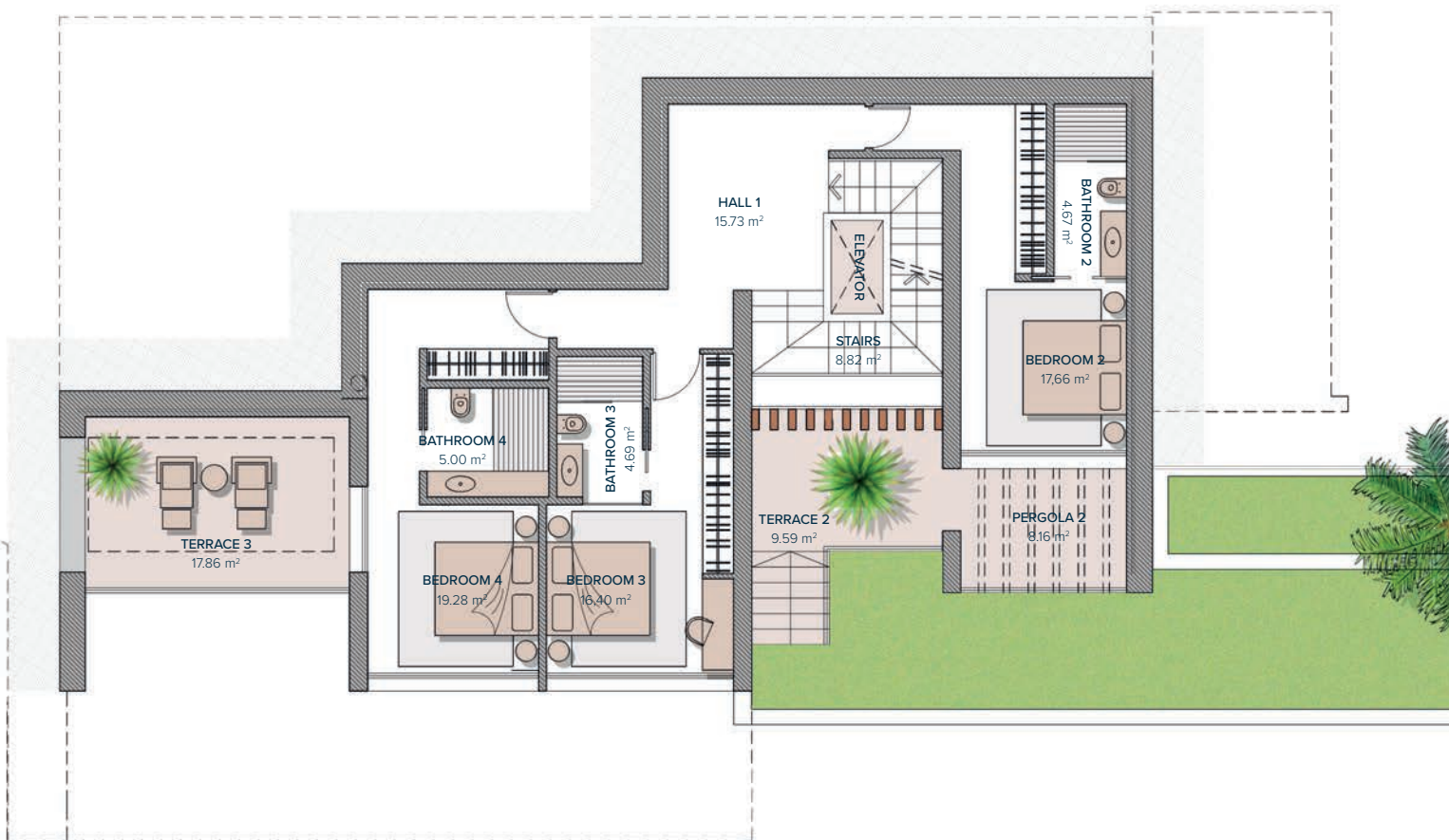
LIVING AREA

MAIN HALL	19,06 m ²
STAIRS	6,50 m ²
LOUNGE- DINING-KITCHEN	74,03 m ²
BATHROOM 1	5,48 m ²
BEDROOM 1	12,49 m ²
STORAGE	9,99 m ²
TOTAL	127,55 m²

PERGOLAS & TERRACES

TERRACE 1	6,88 m ²
PERGOLA 1	37,34 m ²
TOTAL	44,22 m²

These images are not contractual but only for illustrative purposes. The images are subject to technical, legal or commercial modifications approved by the project management or the competent authority. The 3D images corresponding to the facades, common elements, and the rest of the spaces are merely indicative and will be subject to verification or Modification in the technical projects. The furniture of the 3D images is not included and the equipment of the villas will be indicated in the corresponding building and quality specifications. The energy certification corresponds with the one established in the project in process. All the information and documentation will be provided according to the terms established in the Royal Decree 515/1989 and in the rest of the autonomous or state regulations currently in force that could complement the Mentioned Decree.



Entrance	2
	1
	0
	-1

VILLA N°7

GROUND FLOOR

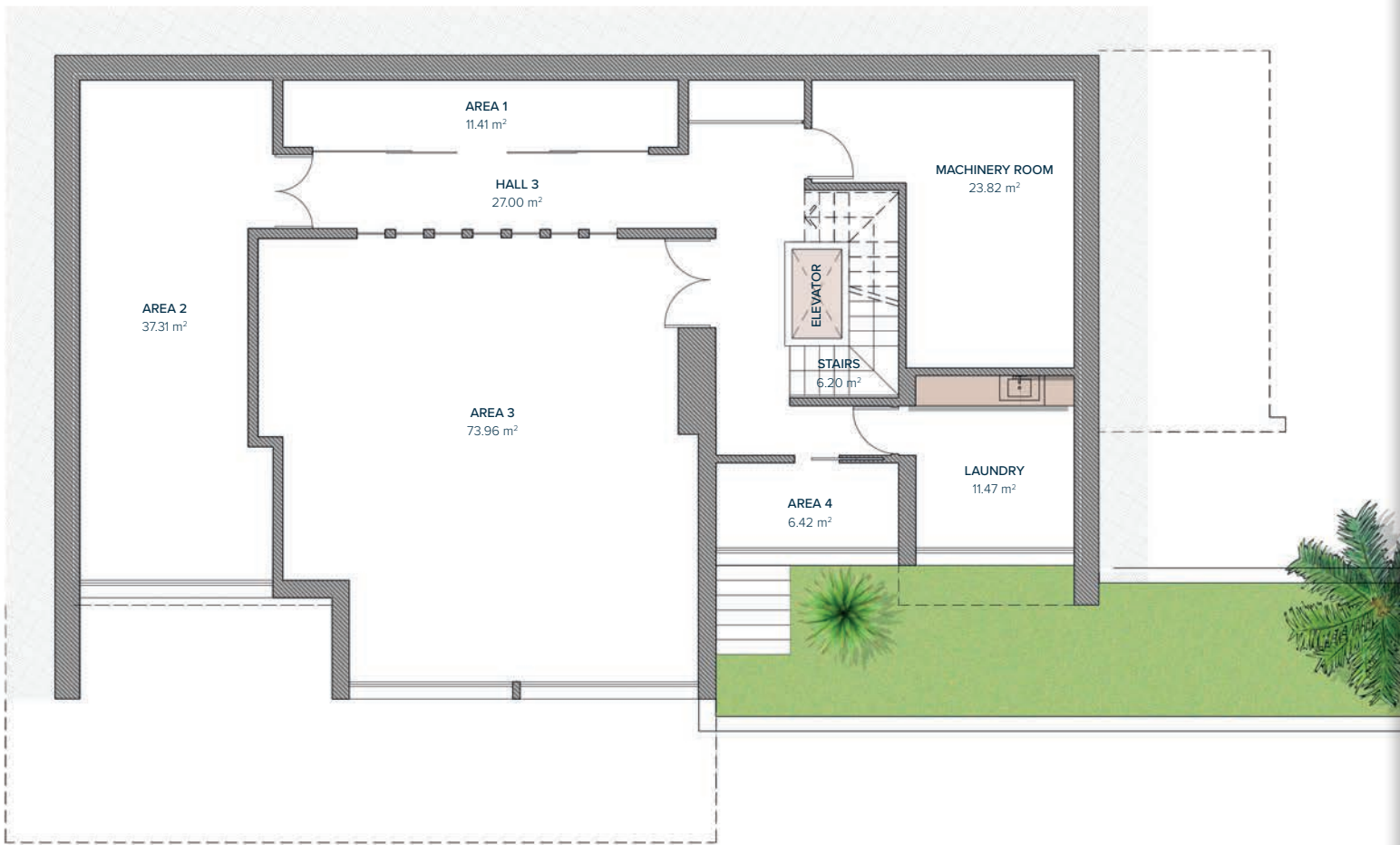
BEDROOMS

HALL 1	15,73 m ²
STAIRS	8,82 m ²
BATHROOM 2	4,67 m ²
BEDROOM 2	17,66 m ²
BATHROOM 3	4,69 m ²
BEDROOM 3	16,40 m ²
BATHROOM 4	5,00 m ²
BEDROOM 4	19,28 m ²
TOTAL	92,25 m²

PERGOLAS & TERRACES

PERGOLA 2	8,16 m ²
TERRACE 2	9,59 m ²
TERRACE 3	17,86 m ²
TOTAL	35,16 m²

These images are not contractual but only for illustrative purposes. The images are subject to technical, legal or commercial modifications approved by the project management or the competent authority. The 3D images corresponding to the facades, common elements, and the rest of the spaces are merely indicative and will be subject to verification or Modification in the technical projects. The furniture of the 3D images is not included and the equipment of the villas will be indicated in the corresponding building and quality specifications. The energy certification corresponds with the one established in the project in process. All the information and documentation will be provided according to the terms established in the Royal Decree 515/1989 and in the rest of the autonomous or state regulations currently in force that could complement the Mentioned Decree.



VILLA N°7

BASEMENT

HALL 3	27,00 m ²
AREA 1	11,41 m ²
AREA 2	37,31 m ²
AREA 3	73,96 m ²
AREA 4	6,42 m ²
STAIRS	6,20 m ²
MACHINERY ROOM	23,82 m ²
LAUNDRY	11,47 m ²
PATIO (LIFT)	1,80 m ²
TOTAL	199,39 m²



Entrance

2
1
0
-1

These images are not contractual but only for illustrative purposes. The images are subject to technical, legal or commercial modifications approved by the project management or the competent authority. The 3D images corresponding to the facades, common elements, and the rest of the spaces are merely indicative and will be subject to verification or Modification in the technical projects. The furniture of the 3D images is not included and the equipment of the villas will be indicated in the corresponding building and quality specifications. The energy certification corresponds with the one established in the project in process. All the information and documentation will be provided according to the terms established in the Royal Decree 515/1989 and in the rest of the autonomous or state regulations currently in force that could complement the Mentioned Decree.

VILLA Nº7

