

VILADOMAT - PARLAMENT



▪ GENERAL INFORMATION ▪

This new development is in a **residential building in the iconic Sant Antoni neighborhood** of the Eixample district of Barcelona. It is a classic style building dating back to 1900 and completely renovated with a lift and communal areas. The building consists of a basement, a ground floor, 7 upper floors and a rooftop, with a total of 12 apartments and 2 loft properties that are delivered **fully furnished and equipped ready to move into.**

All the apartments have access to a balcony and 5 of them have private terraces between 10 and 50 square meters. The penthouse has a private terrace with panoramic views of the city of Barcelona from where you can see the Sagrada Familia.

A concept of **convertible apartments** equipped with a system of sliding panels that allow a single space to be transformed into an apartment with **two double en-suite bedrooms** with beds that can be hidden in the closets as the panels go from one end of the apartment to the other.

The central core contains the kitchen and bathroom. The kitchen is fully equipped with fitted electrical appliances (dishwasher, oven, microwave oven, coffee maker and refrigerator), Zucchetti taps and Porcelanosa brand worktop; The bathroom is divided into three separate parts with access from each bedroom. It has continuous flooring, marble features, handmade ceramic wall tiles, porcelain countertop, built-in taps, a rain shower and custom-made cabinets.

In addition to these 12 apartments, we find 2 duplex loft properties with a height of 6 meters and panoramic windows overlooking a private patio. The kitchen and bathroom are fully equipped with the same features as in the other homes in the building.

The communal areas of the building include **bicycle parking, a wine cellar, a laundry room and a communal terrace with outdoor showers**, a lounge and a social bar.



· PROPOSAL ·
3D IMAGES



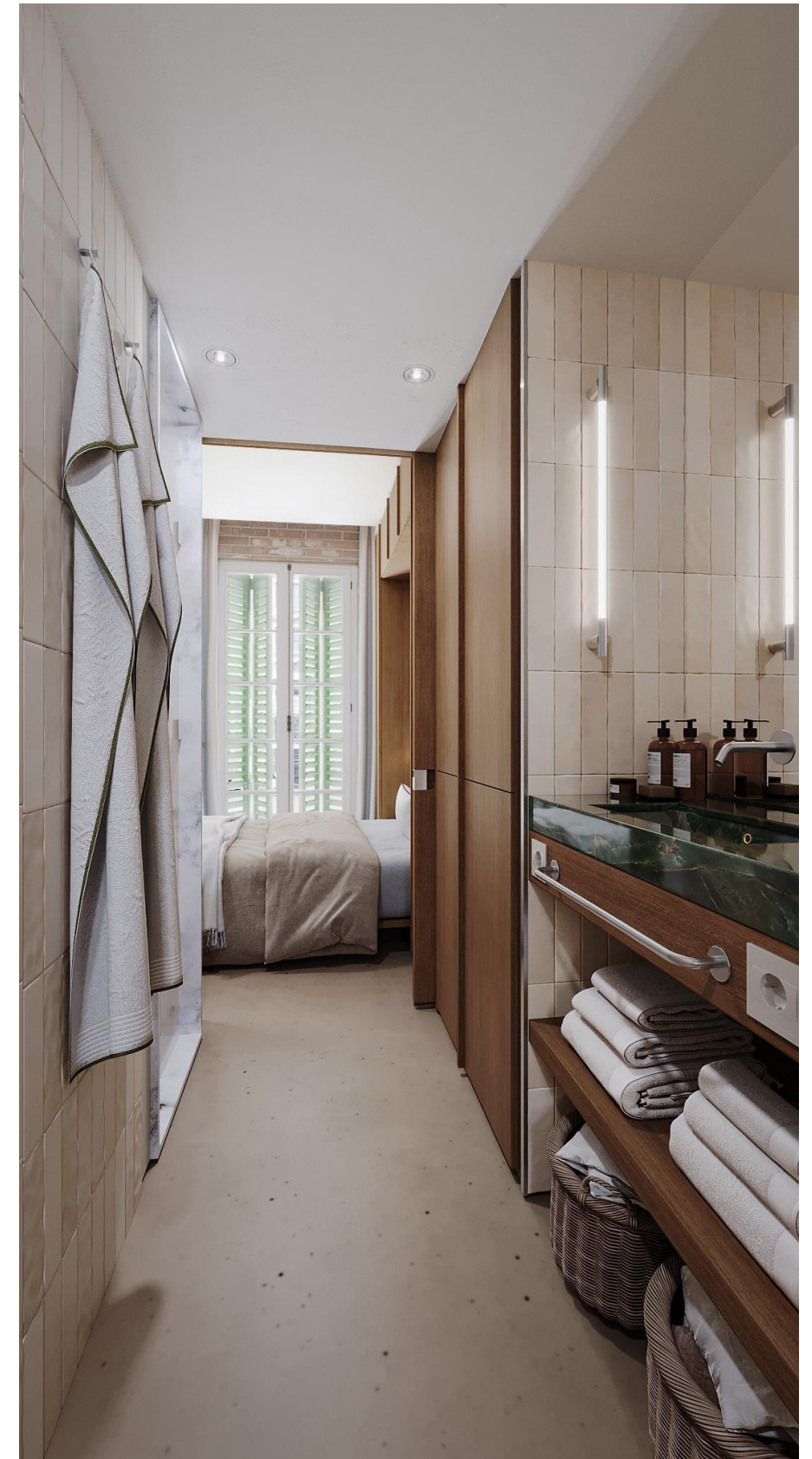
· PROPOSAL ·
3D IMAGES



· PROPOSAL ·
3D IMAGES



· PROPOSAL ·
3D IMAGES



· PROPOSAL ·
3D IMAGES



· PROPOSAL ·
3D IMAGES



· PROPOSAL ·
3D IMAGES



· PROPOSAL ·
3D IMAGES



· PROPOSAL ·
3D IMAGES



· PROPOSAL ·

Ground floor

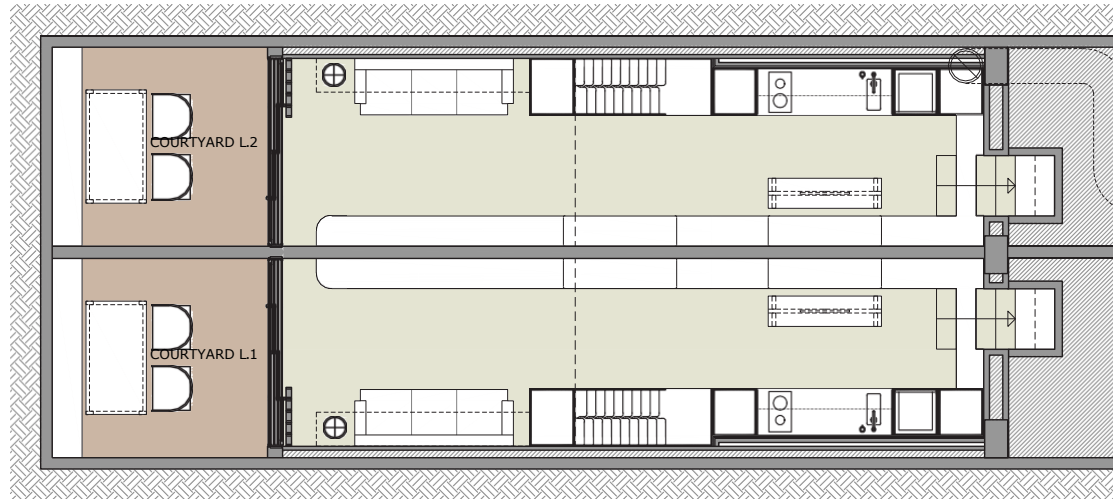
Loft 2


67 m²
de área construida

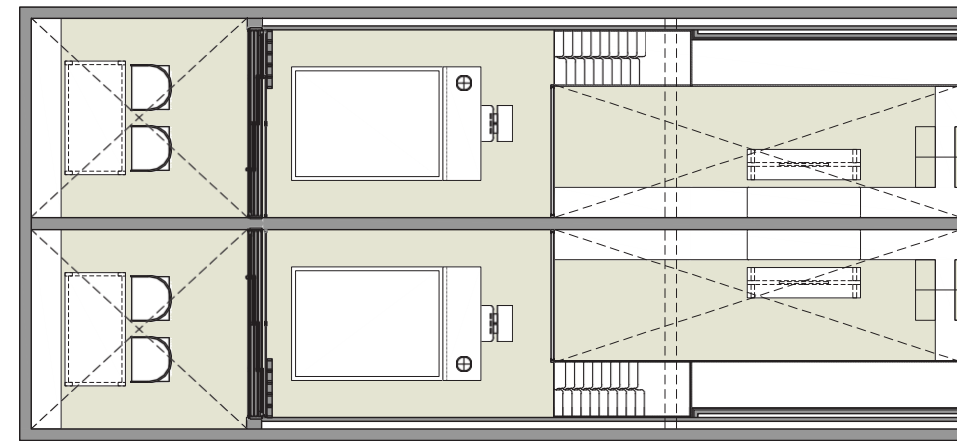

9 m²
de terraza


1
Habitaciones


1
Baños



PLANTA BAJA



PLANTA PRIMERA

Loft 1

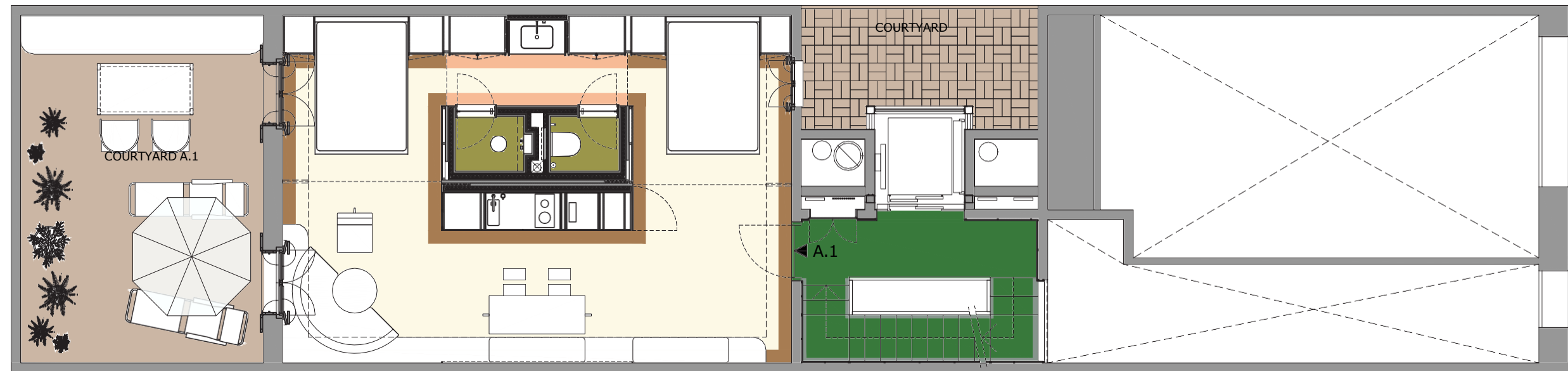

67 m²
de área construida


9 m²
de terraza


1
Habitaciones


1
Baños

• **PROPUESTA**
Mezzanine Floor



Mezzanine


64 m²
de área construida

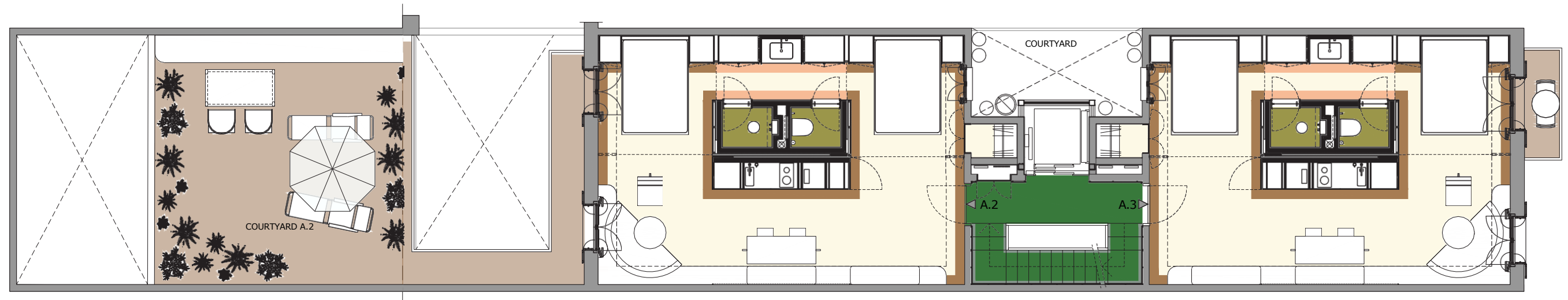

20 m²
de terraza


2
Habitaciones


1
Baños

· PROPOSAL ·

Main Floor



Main floor 1


69 m²
de área construida



30 m²
de terraza


2
Habitaciones


1
Baños

Main floor 2

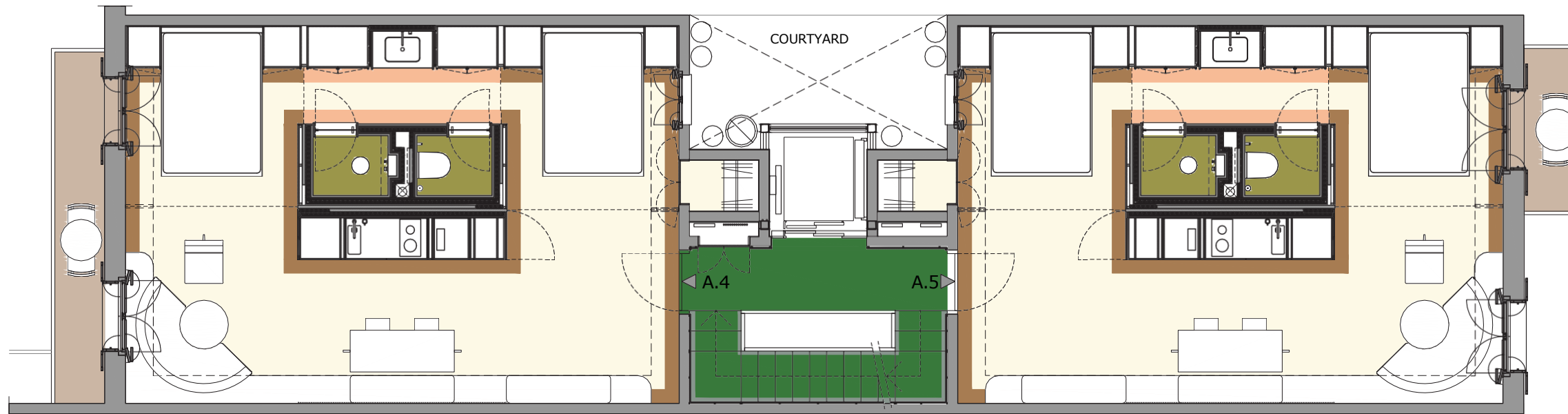

59 m²
de área construida


2 m²
de balcón






2
Habitaciones


1
Baños





· **PROPOSAL** ·
Type Plant



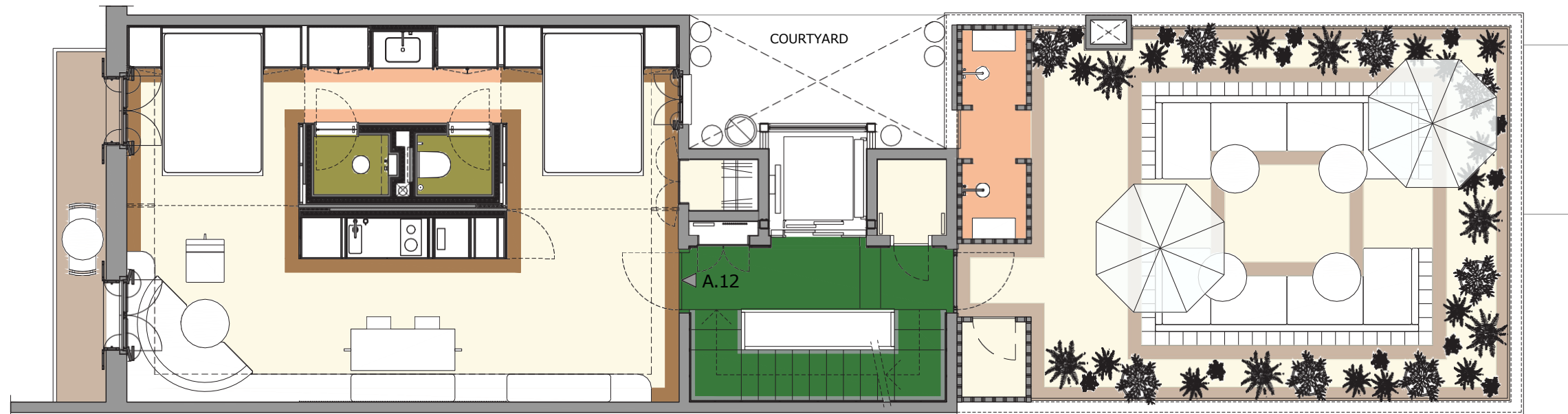
Door1

-  **54 m²**
de área construida
-  **3.5 m²**
de balcón
-  **2**
Habitaciones
-  **1**
Baños

Door 2

-  **59 m²**
de área construida
-  **2 m²**
de balcón
-  **2**
Habitaciones
-  **1**
Baños

· **PROPOSAL** ·
5th FLOOR



Atico


54 m²
de área construida


3.5 m²
de balcón

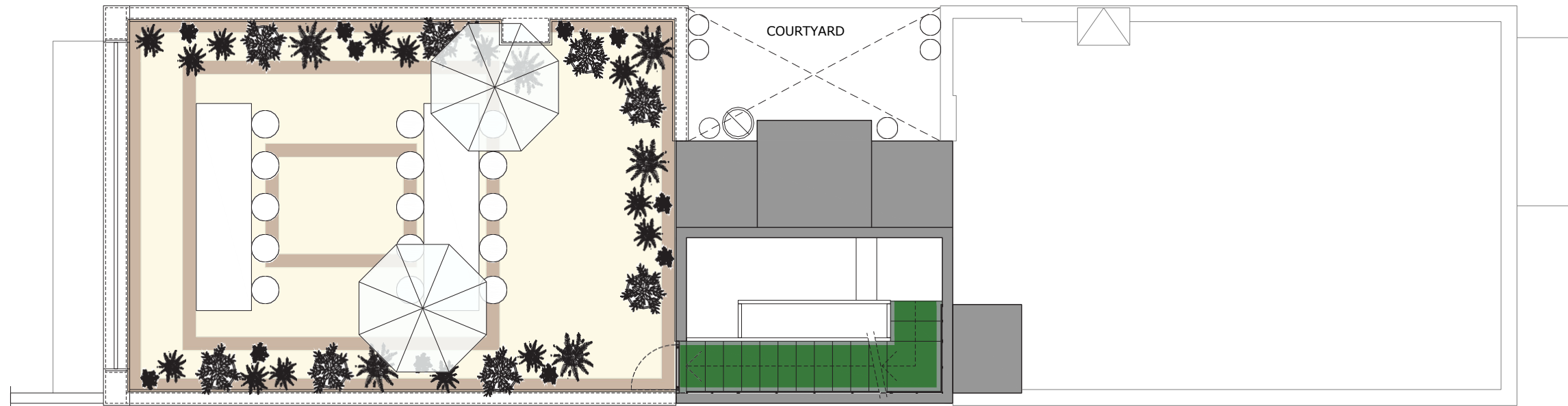

2
Habitaciones


1
Baños

Roof top


54 m²
de terraza

· **PROPOSAL** ·
3D Image



Terraza Ático

HTH
54 m²
de terraza

VILADOMAT - PARLAMENT

