

# THE BRIDGE







INTRODUCTION

# 20 magnificent apartments

Next to Barcelona's Port Olímpic

An iconic building just a few steps from the sea, completely transformed by the renowned architectural firm Batlle i Roig, reflecting a Mediterranean lifestyle where every space has been designed to provide comfort, distinction, and its own unique style.





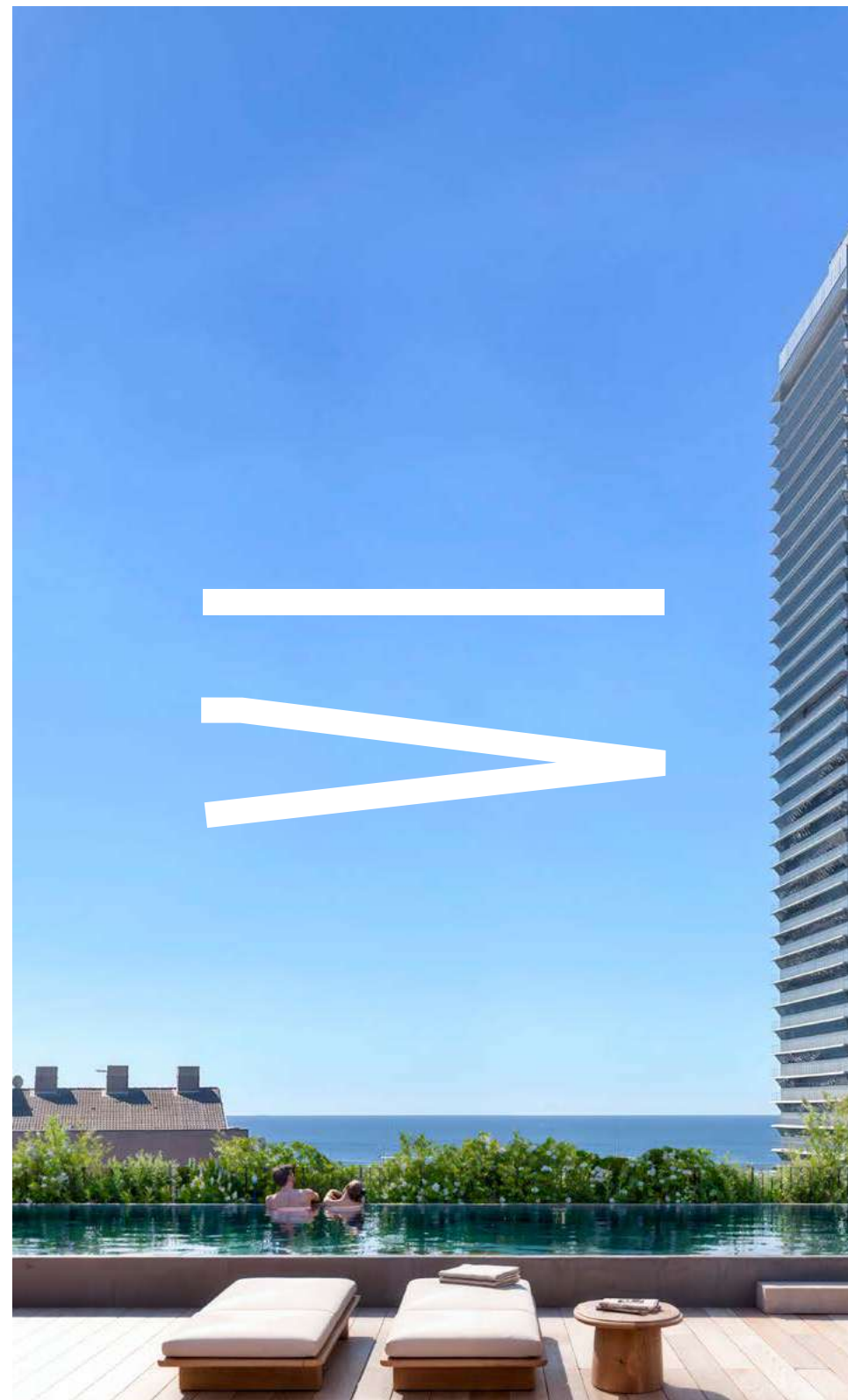
INTRODUCTION

# Bridge

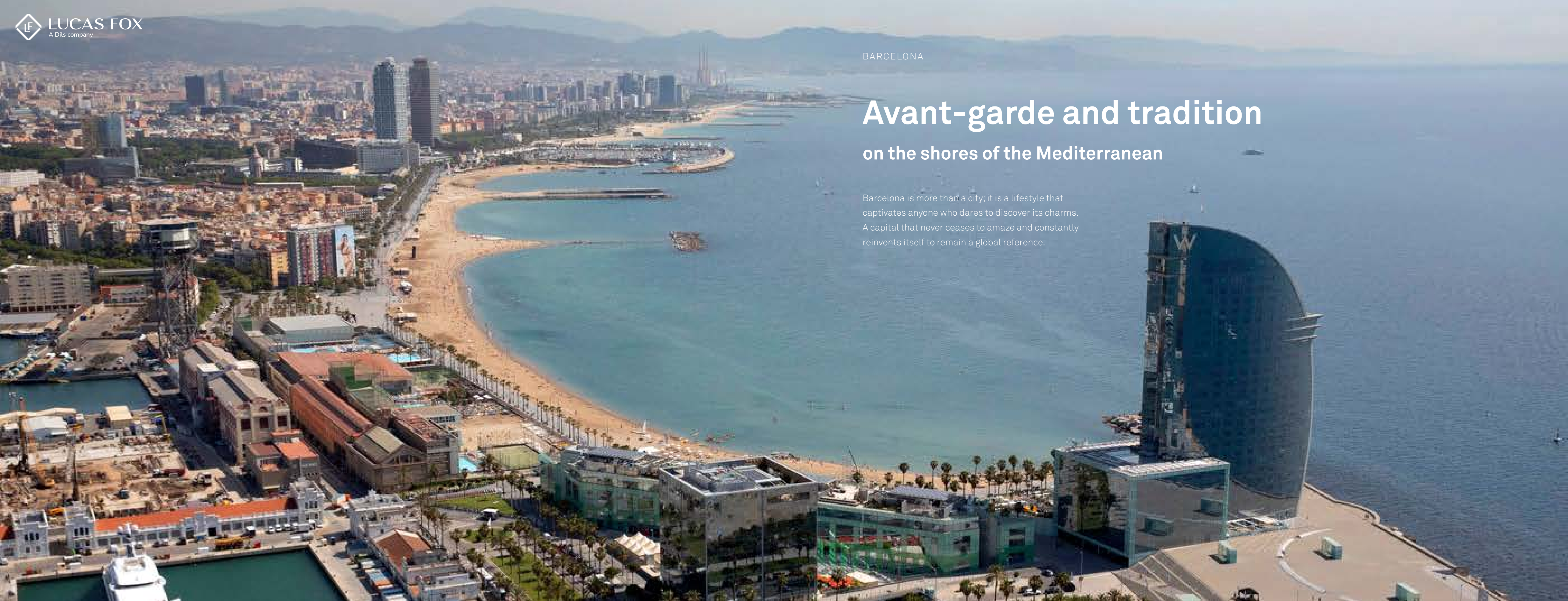
In the ideal city for living  
and working

Located in Barcelona's Vila Olímpica and composed of the Elipse and Prisma buildings, connected by the Bridge Building on the third floor, Bridge offers avant-garde, sustainable, and welcoming architecture where leisure and work come together.

Whether enjoying the stunning views of the sea, just steps from the front door, or the light and elegance of its interiors, the building features a groundbreaking style that offers a unique experience for every day.







BARCELONA

# Avant-garde and tradition

## on the shores of the Mediterranean

Barcelona is more than a city; it is a lifestyle that captivates anyone who dares to discover its charms. A capital that never ceases to amaze and constantly reinvents itself to remain a global reference.





LAS OLIMPIADAS DE 1992

# The 1992 Olympics

## The world discovers Barcelona

The 1992 Olympic Games catapulted Barcelona onto the international stage, elevating it as a global beacon of inspiration. The world discovered its unique charm and witnessed its rich culture and contagious vitality.

It was then that the Barcelona brand began to take shape, becoming a global reference that continues to attract millions of visitors and residents, amazed by its uniqueness and charm.



AMERICA'S CUP

# America's Cup 2024

## Barcelona the host city

The oldest (dating back to 1851) and most prestigious sailing regatta in the world will take place in Barcelona in 2024. The America's Cup is one of the most challenging competitions to win, attracting the world's best sailors and creating an atmosphere of unmatched excitement and competition.

In this 37<sup>th</sup> edition, participating teams will compete in foiling monohull vessels, incorporating the latest technology and enhancing the event's sustainability.

With its rich maritime tradition and stunning natural setting, Barcelona will be the host city for the latest edition of the competition, promising to be an unforgettable spectacle that will leave its mark on the history of nautical competitions.







BRIDGE

# Iconic architecture

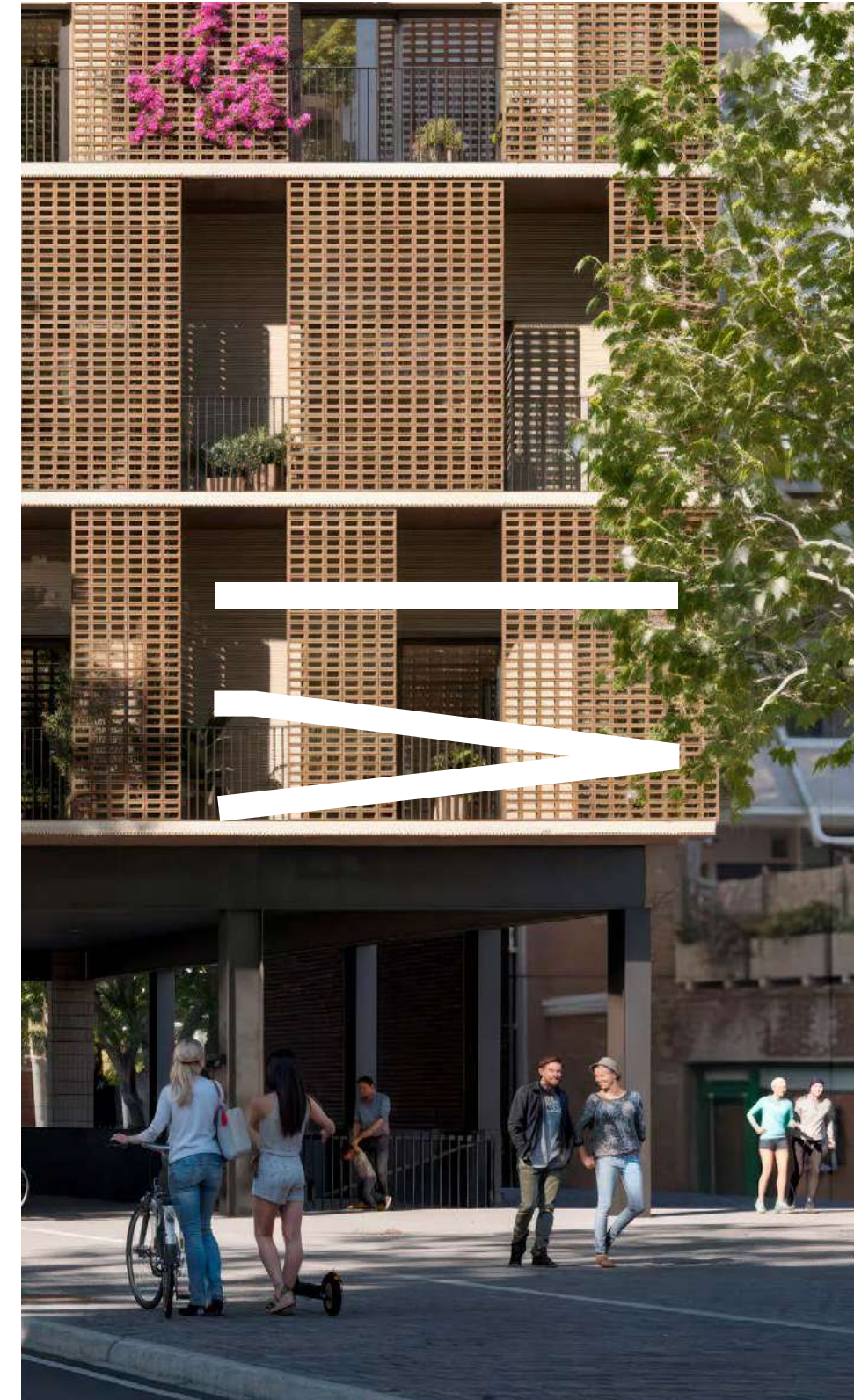
An emblematic building from  
the Olympic era

Bridge is the result of transforming an iconic technical building from the Olympic era into exclusive contemporary design residences with the best amenities, just steps from the seafront.

This ambitious transformation project, conceived by the avant-garde architectural firm Batlle i Roig, preserves the structure and futuristic essence of the original building, turning it into a new design and sustainability landmark that revitalises Barcelona's urban fabric.

Living in Bridge means immersing yourself in a vibrant space where every corner connects you to the city's Mediterranean identity. A unique building in Barcelona that combines history, design, and comfort.





BRIDGE

# A new vision

## The building's innovative spirit reborn

With a unique style and a forward-looking vision, the Battle i Roig architectural firm represents Barcelona's innovative spirit. Their commitment to the environment, sustainability, and design excellence is reflected in each of their architectural creations.

The firm successfully combines the city's architectural tradition with the latest design trends, creating unique spaces that seamlessly integrate with their surroundings and enhance the quality of life for their residents.

Mediterranean architecture, reflected in the use of natural materials like stucco, wood, and brick, as well as the use of terraces and natural light, makes Bridge a representation of the local lifestyle.



THE APARTMENTS

# Light, sun, and sea breeze

And spacious design to  
enjoy in company

The residences at Bridge are designed to fill everyday life with light, fresh air, and relaxation. Various types adapt to the needs and tastes of their inhabitants, with flexible spaces and layouts that offer comfort (with great home automation and climate control solutions) and ample spaces to enjoy with family or friends. From terraces with sea views and en-suite bedrooms to large integrated kitchens — equipped with islands for cooking and socializing — everything is designed for a vibrant and comforting life.





THE APARTMENTS

# Three unique profiles

## Homes that adapt to your lifestyle

- 1** In the **Prisma Building**, the outdoor spaces are integrated with lattices to filter light and provide solar protection and privacy. Each residence becomes a perfect retreat to rest and enjoy the natural surroundings. The spacious and bright rooms, with integrated bathrooms, create an inviting atmosphere for relaxation and disconnection.
- 2** The **Bridge Building** apartments, suspended over the street axis, offer unique unobstructed views and spaces to relax and enjoy the Mediterranean climate.
- 3** The **Elipse Building**, with its curved forms and generous outdoor spaces, stands out for its innovative and functional design, offering the opportunity to enjoy the surrounding environment from the comfort of home.







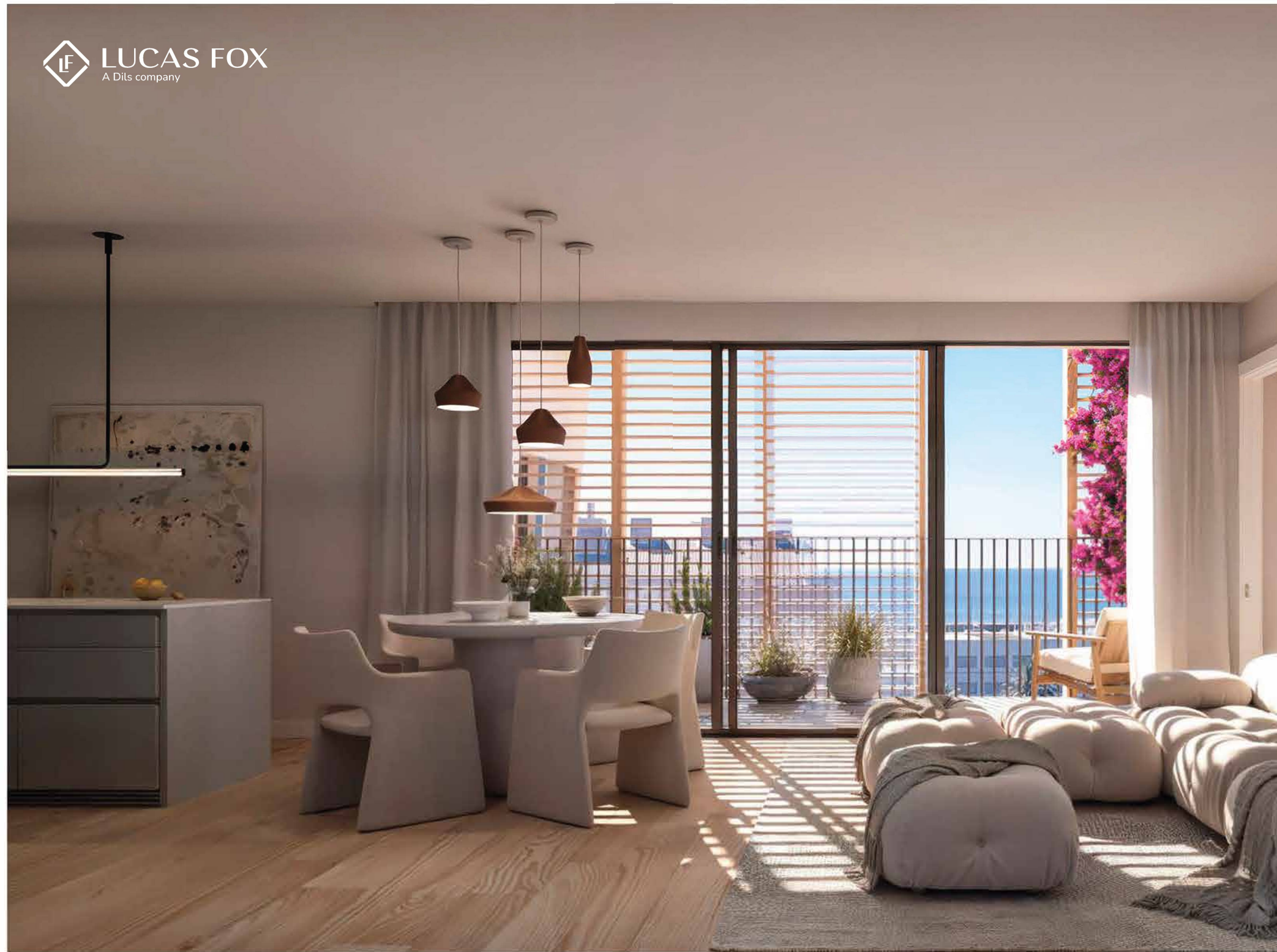
THE APARTMENTS

## Daytime areas

**Spaciousness, flexibility, and connection with the outside**

The daytime areas stand out for their spaciousness and brightness, thanks to the abundant natural light that enters through the terraces and balconies. The flexibility of the spaces is enhanced by the mobile blinds, which act as filters and protectors, allowing personalised light control and ensuring a comfortable and welcoming environment at all times.







THE APARTMENTS

# Terraces and balconies

Outdoor living to enjoy the Mediterranean climate

Outdoor areas, such as terraces and balconies, are conceived as extensions of the interiors of the residences, harmoniously interacting with the environment. Ideal for relaxing, socialising, and fully living the views of the neighbourhood, the sea, and the hills behind Barcelona.





## AMENITIES

# Exclusive amenities

## The pleasure of living in Bonavista Bridge

Every detail has been designed to offer maximum comfort and enhance activities that define the Barcelona lifestyle.

Residents can enjoy the **private gym** in the basement to keep fit and start the day with energy, or enjoy the sea views from the spectacular rooftop with a **pool and chill-out area** surrounded by lush greenery.

The location of the apartments is ideal to enable a healthy lifestyle, thanks to their proximity to the city and the beach, which can be reached on foot or by bike, using the community bike parking. Additionally, each residence has its own private parking space and individual storage room.

At Bridge, every everyday moments are transformed to feel like luxury.







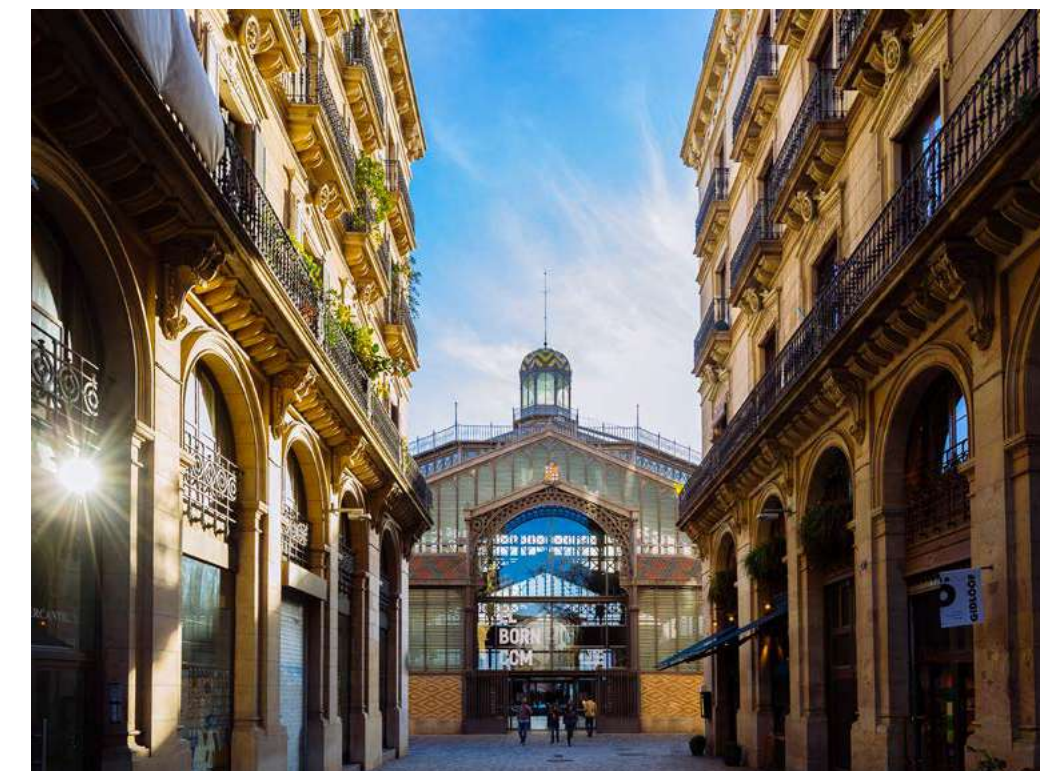
LOCATION

# The Vila Olímpica

Urban, modern, and full of life

The Vila Olímpica, conceived to host athletes in 1992, has evolved into a modern and cosmopolitan neighborhood, becoming an emblem of modern Barcelona.

Living in Vila Olímpica is synonymous with quality of life and convenience. The possibility of walking or cycling everywhere, having the beach right in front, and having emblematic places in Barcelona such as **Parc de la Ciutadella, El Born, or the Gothic Quarter** within reach, make it the place to be.







LOCATION

# The Port Olímpic

**The nautical, gastronomic and entertainment epicentre**

The renovated Port Olímpic of Barcelona, inaugurated in 2024 to coincide with the America's Cup, has established itself as the protagonist of a new urban lifestyle. It features over 20,000 m<sup>2</sup> of public space in Moll de Mestral, a new and sophisticated gastronomic offering in Moll de Gregal, and a large viewpoint over the Mediterranean Sea in Dic de Recer.





LOCATION

# In front of Nova Icaria Beach

## And two steps from Poblenou

The former industrial neighbourhood of Poblenou is today the epicentre of the city's artistic and cultural scene. Here you will find many of the most interesting and avant-garde workshops, studios, and galleries in Barcelona. A different lifestyle complemented by a wide and unique offering of restaurants, bars, and music clubs, all with Nova Icaria beach less than a minute away from Bonavista Bridge.





SUSTAINABILITY

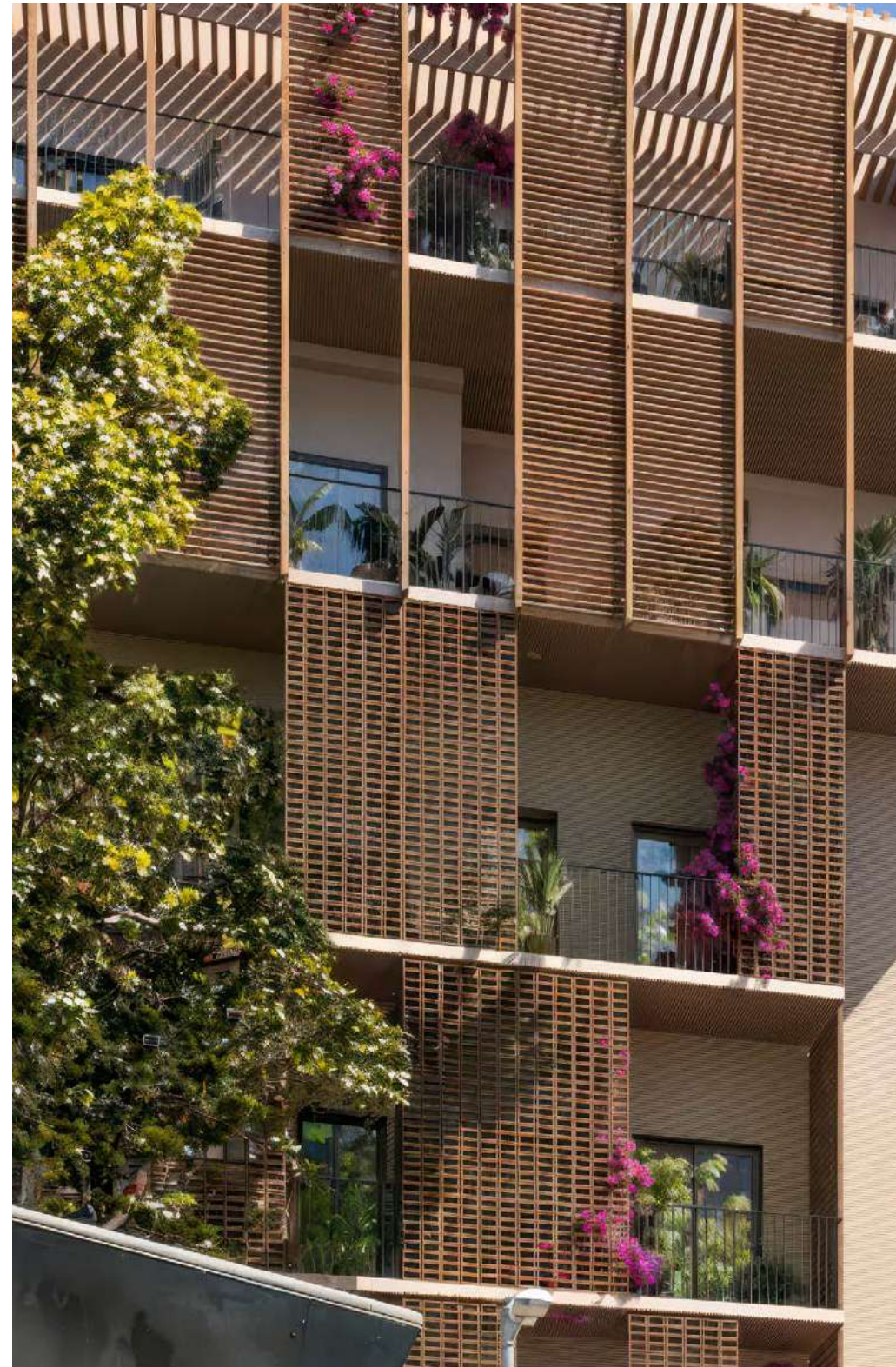
# Sustainability at the forefront

## Design, functionality, and ecological commitment

Bridge demonstrates that the union of design, functionality, and ecological commitment is possible.

Its facades, equipped with overhangs, pergolas, and lattices, create a protective shield against solar radiation, drastically reducing air conditioning consumption in summer, while the innovative insulation system minimizes heat loss, making winter more bearable.

The ventilation system with heat recovery, along with centralized hot water and climate supply, marks a milestone in residential sustainability and adds enormous value, as it is implemented through the efficient Districlima system, available in only a few areas of Barcelona.



All this, coupled with greywater reuse and photovoltaic energy generation for common areas, has earned the building the coveted double A energy rating.

At Bridge, sustainability is no longer an aspiration but becomes the new reality of architecture, offering residents a conscious and planet-friendly lifestyle without sacrificing comfort.

