

HIGUERON LUX



Discover the distinction.
Fulfill your aspirations, embrace precision,
and let your heart lead the way.

HIGUERON LUX

It begins here. The 9.

An ensemble of 9 uniquely designed luxury villas overlooking the costa del sol.

Designed by renowned architects, built to luxury standards, made for those who demand the very best.





Prepare to Be
Enchanted by the
Allure of Costa del Sol



Step into an extraordinary realm as we welcome you to explore an exquisite array of the exclusive HIGUERON LUX nestled in a serene and secure enclave, nestled within one of Costa del Sol's most esteemed locales.

Indulge in the Golfing Extravaganza

For aficionados of the fairway, Costa del Sol's bounty of over 70 golf courses beckons. With our locale, HIGUERON LUX stands as the pinnacle destination within continental Europe, offering a plethora of options to satisfy even the most discerning golfer's palate.





Elevate Your Lifestyle at HIGUERON LUX

Life at the Higuierón reserva transcends mere residence; it epitomizes a lifestyle defined by innovation, sustainability, and well-being. From state-of-the-art sports facilities to co-working spaces and gastronomic delights, every aspect is meticulously curated to cater to the modern connoisseur.





Marbella 25 minutes
Gibraltar 60 minutes
Malaga Airport 20 minutes

Perfectly Positioned in Paradise The Charm of Costa del Sol

Nestled amidst the hills of El Higuerón, our residences enjoy unparalleled connectivity to Malaga, Marbella, and beyond, courtesy of strategic positioning. With direct access to the A7 via exit 217 and mere minutes away from Carvajal Beach,



A Symphony of Luxury Unfolds at HIGUERON LUX, boasting opulent residences adorned with intricate architecture and sustainable design, a seamless fusion that creates spaces of practicality and reverence.

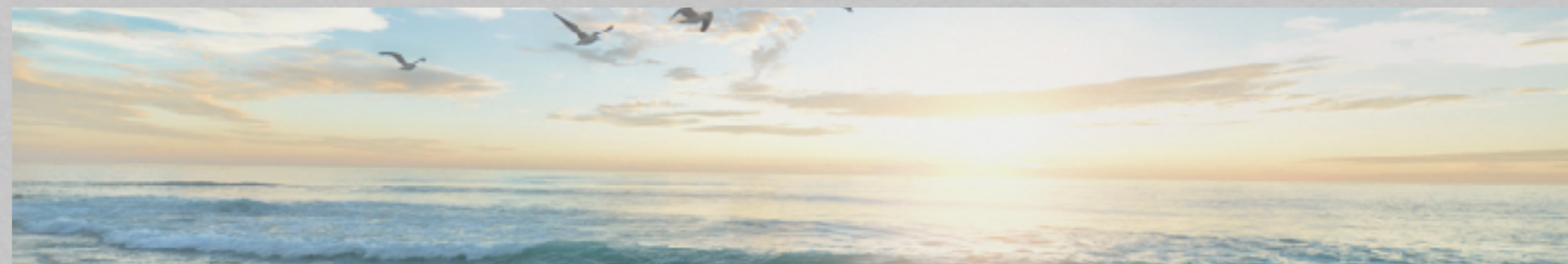
Each dwelling stands independently, ensuring the utmost privacy for every family.

Crafted with a mindful approach towards the environment and a harmonious ode to the Mediterranean lifestyle, these residences boast 4 or 5 or 6 bedrooms, encompassing living areas ranging from 200 to 275 square meters, complemented by expansive basements and terraces.

Set upon plots spanning between 520 and 850 square meters, each residence is a testament to refined living.



At HIGUERON LUX,
every vista is a
masterpiece, offering
breathtaking panoramas
of the azure skies and
the vast expanse of the
Mediterranean Sea.



Experience unparalleled tranquility, avant-garde architecture, and spaces designed to nurture your well-being and that of your loved ones.



In simplicity lies sophistication – HIGUERON LUX captivates with its avant-garde design and timeless allure, setting a new standard of excellence in residential living. Embrace a lifestyle where design meets functionality, and luxury intertwines with practicality.

Privacy takes precedence at HIGUERON LUX, where every corner is a sanctuary, shielded from the cacophony of the outside world. From soaring ceilings to expansive windows and meticulous material selection, tranquility reigns supreme, inviting you to unwind, dream, and reconnect.









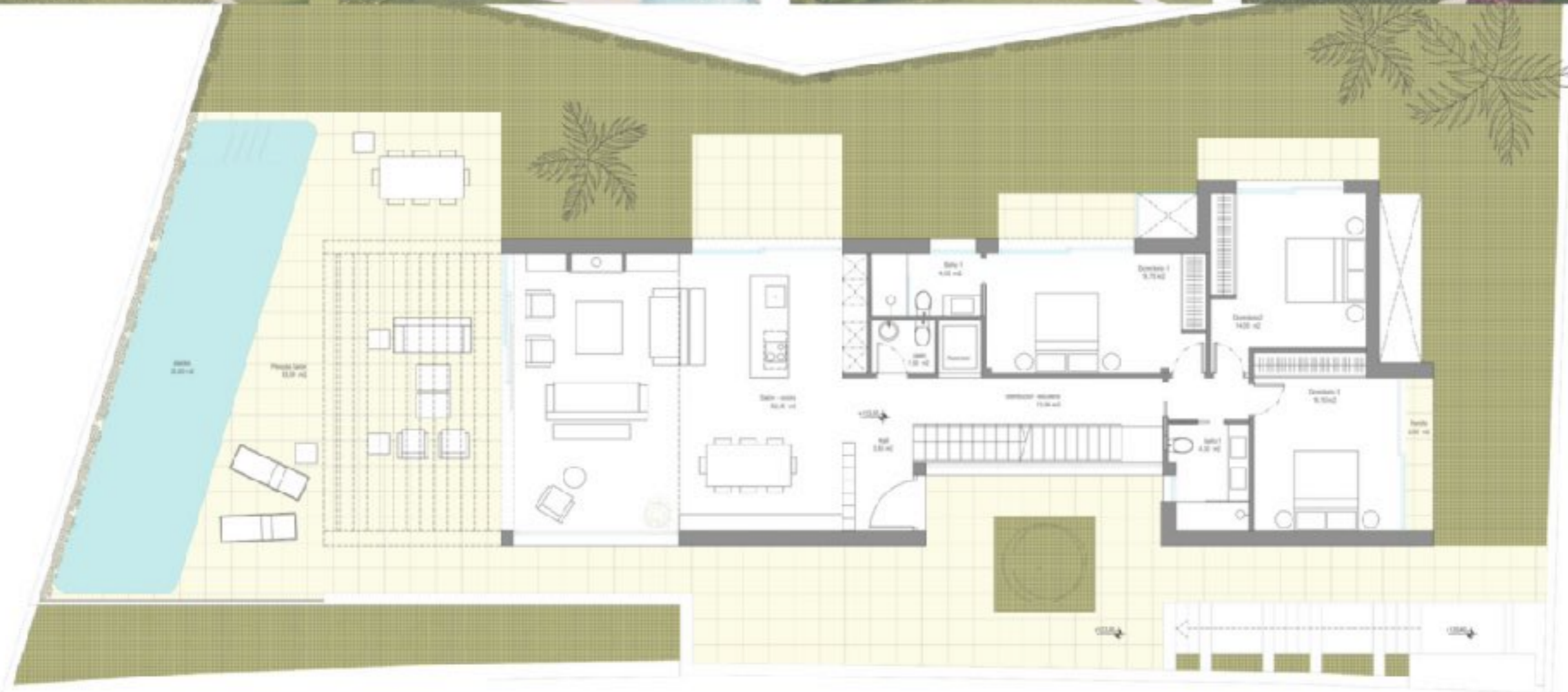








HIGUERONLUX



PARCELA 6.6
PLANTA BAJA- DISTRIBUCION

Sup. Parcela : 547,50 m²
Sup. construida cerrada : 151,45 m²
Sup. porches cubiertos : 2,30 m²
Sup. pérgolas : 33,00 m²



Sup. Total vivienda: 413,57 m²



PARCELA 6.6
PLANTA ALTA- DISTRIBUCION

Sup. Parcela: 547,50 m²
Sup. construida cerrada: 67,56 m²
Sup. terrazas: 31,30 m²
Sup. pérgolas: 16,50 m²



Sup. Total vivienda: 413,57 m²

Los datos y superficies contenidos en el presente documento, tienen un valor meramente informativo y pueden estar sujetos a modificaciones de la empresa o la Dirección Técnica. Las puertas, su apertura, los aparatos sanitarios y su distribución no son vinculantes. El mobiliario incluido el de la cocina, colores, texturas y coloría son solamente grafismos orientativos. Por consiguiente esta documentación no puede ser considerada como una forma de contrato u obligación.



PARCELA 6.6
PLANTA SÓTANO - DISTRIBUCION

Sup. Parcela : 547,50 m²
Sup. construida cerrada: 194,55 m²



Sup. Total vivienda: 413,57 m²

SUELO VIVIENDA



— Pacific Blanco Plus Abujardado
100x100 C1 y C3 Exteriores



SUELO VIVIENDA | opción

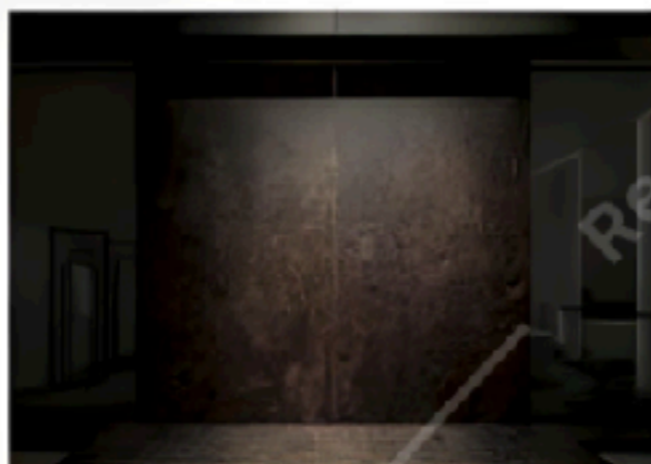
— Aranda Blanco
100x100 C1 y C3 Exteriores



BAÑO MÁSTER zona ducha y plato



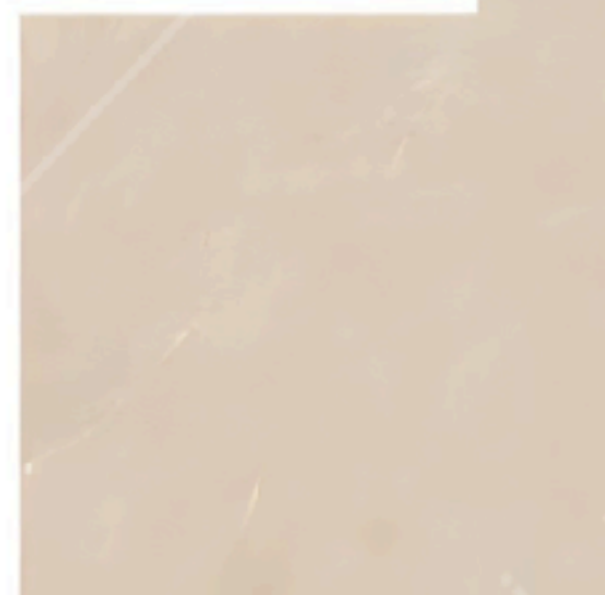
— Umbra Marrón Abujardado
100x250



BAÑOS SECUNDARIOS



— Pacific Blanco Plus Abujardado
100x250



ASEO

— Papel Glamora Acropora



GLAMORA

LAMINADO SUELO

planta alta y sótano

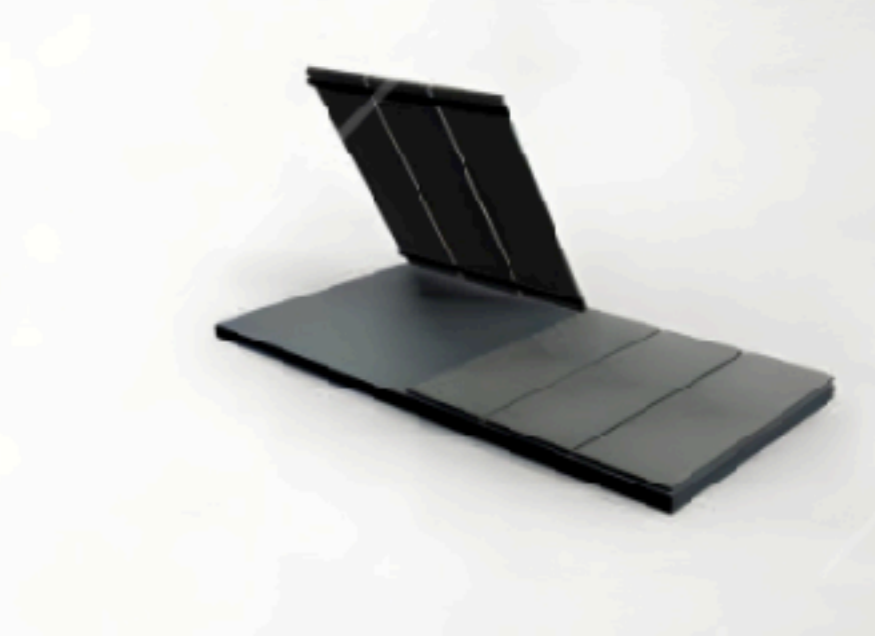
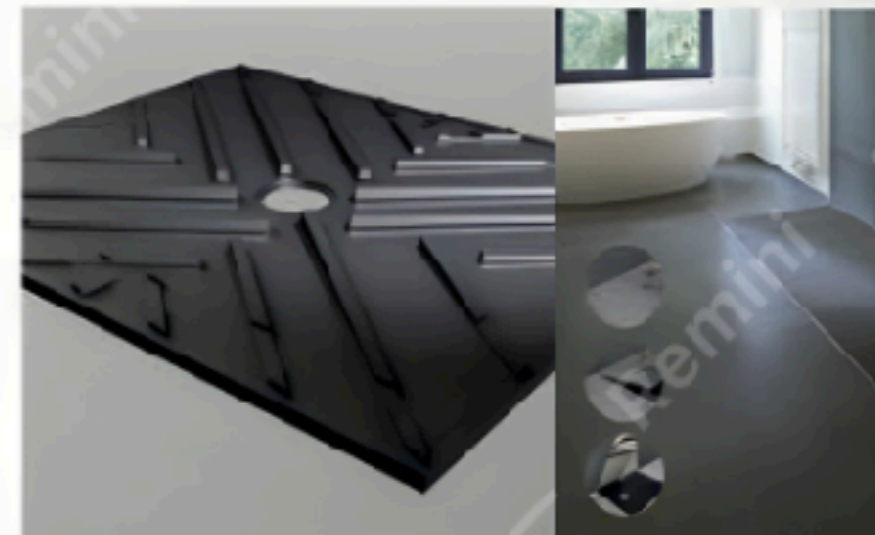
— Brikte Laminado Mammur



BRIKTE

REVESTIMIENTO BAÑO 2 Y 3

— level Plato Ducha 120 x 80



MUEBLES DE BAÑOS



— Colección U3 Unibaño Laca Colores dos senos y un seno según medidas finales

UNIBANO UNLIMITED RESPIRATION



zehnder

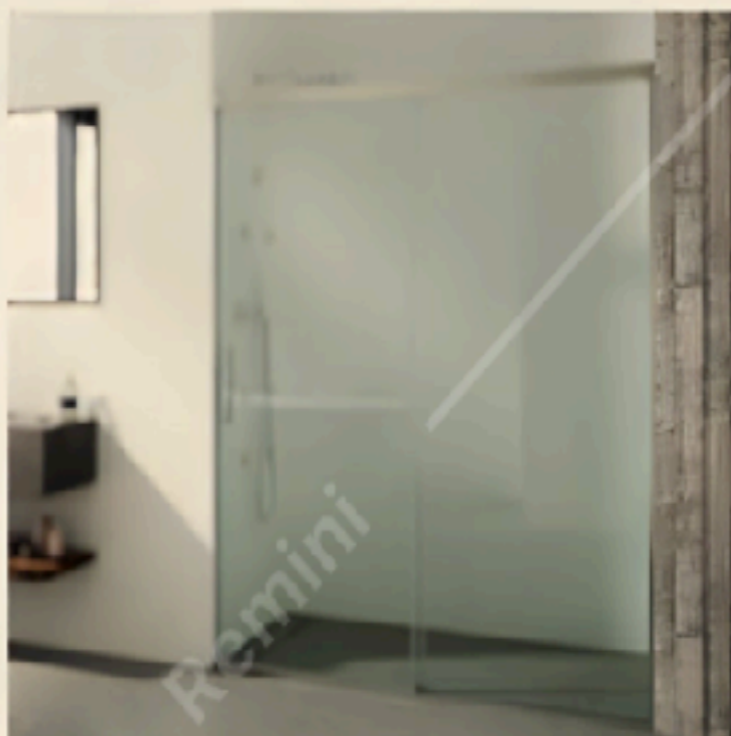


— Subway Toallero Eléctrico acero inoxidable

MAMPARAS BAÑOS



— Curacao Mampara 120 x 60 x 1950
Transparente antical



— Panama Mampara 2000 x 1950
Transparente antical

WC BAÑOS

DURAVIT

TECE
close to you



— D-Neo Taza WC
D-Neo Asiento Soft



— Tecesolid Pulsador
Acero Inoxidable Antihuellas



— Insonorización WC



— Módulo TIZO WC

GRIFERÍA BAÑOS

Opción crucetas / monomando

ZUCCHETTI



— Gill LV Pared Nickel Cepillado

Brushed Nickel



ZONA DUCHA



— Gill Termostato
2 Vías Nickel Cepillado



— Codo tema



— Ducha Mano



— Rociador + Brazo



— Flexo Cucha

GRIFERÍA BAÑERA SUELO

ZUCCHETTI



— Gill LV Pared Nickel Cepillado

Brushed Nickel



There comes a moment when you realize that you've made the perfect choice—a moment of pure elation and contentment. HIGUERON LUX symbolizes that pinnacle, offering you the opportunity to ascend to new heights, embark on a journey of unparalleled luxury, and bask in the knowledge that you've made the right decision. It's time to embrace the life you deserve.

