

QUALITY RESUME

EXTERNAL WOODWORK:

Tilt-and-turn windows with PVC profiles of $U_f = 0.86 \text{ W/m}^2\text{k}$ and 4/20/4 low-e glass with argon, finished in white.

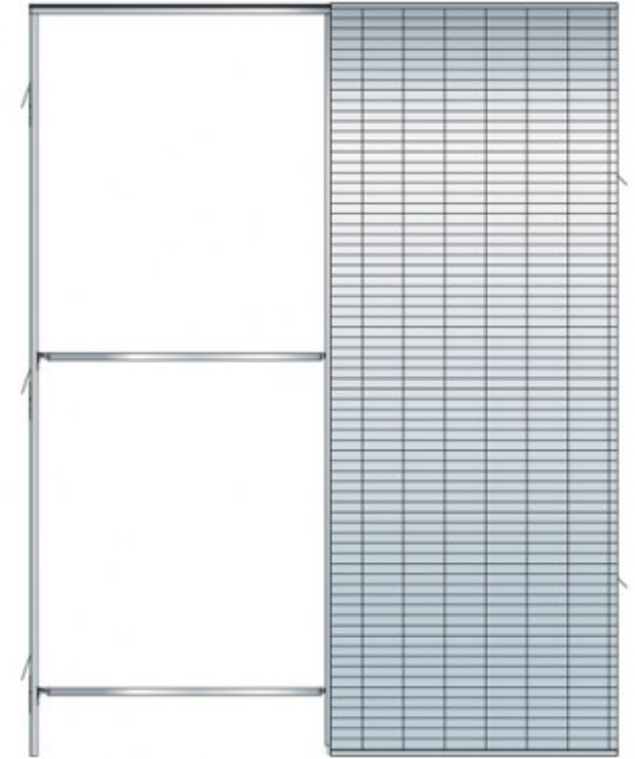


INTERIOR CARPENTRY:

Sliding doors with KRONA frame, and folding doors finished in smooth white lacquer, with black or silver handles.



Folding doors



Sliding doors



Levers (black or silver)

QUALITY RESUME

ELECTRICITY

Interior electrical installation, sectored according to regulatory marking.

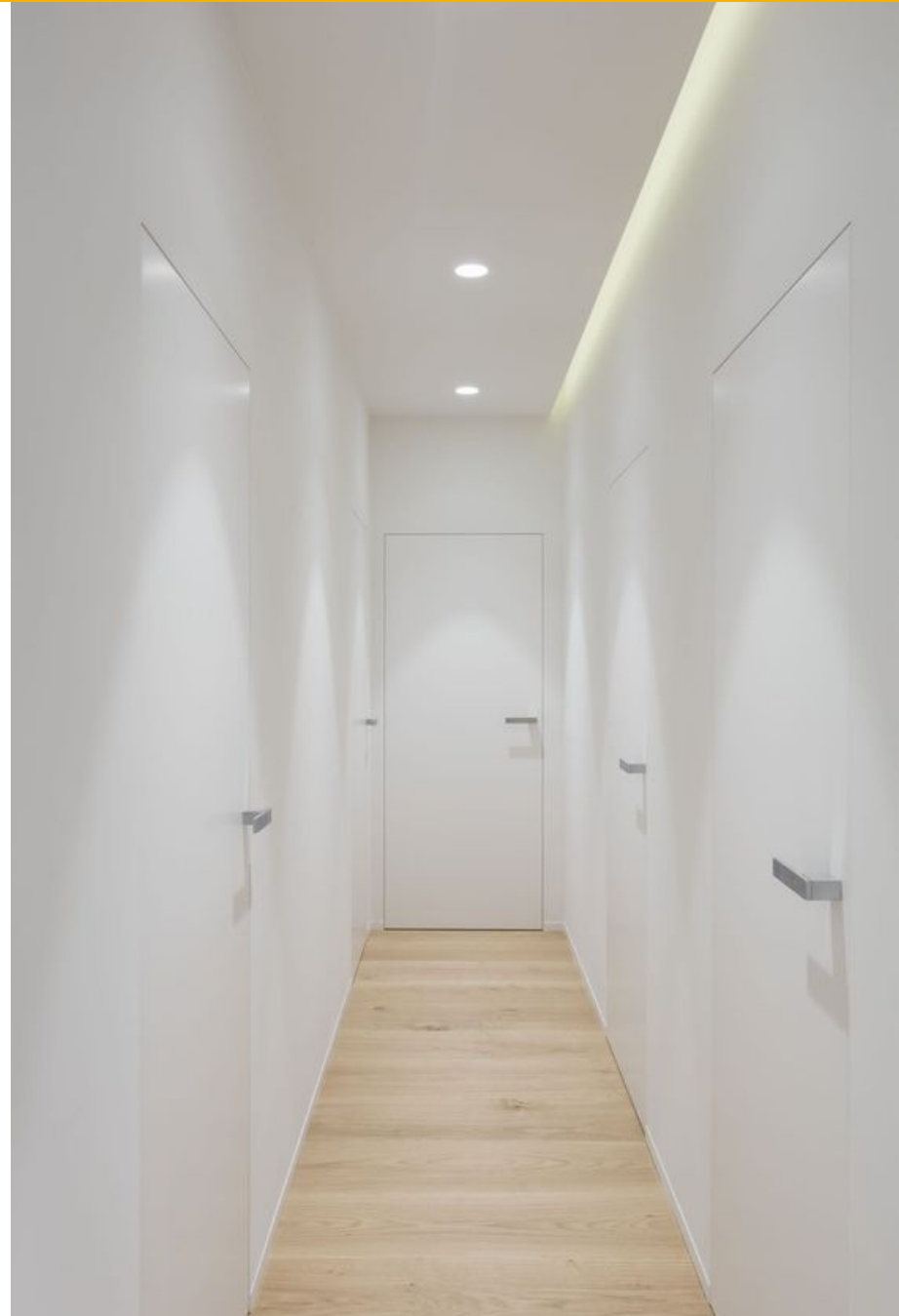
Installation of telecommunications to the dining-living area.

Fiber optic installation to the entrance of the home (pipe provision to the dining-living area).

Downlight and linear LED luminaire, depending on each room.

SIMON, JUNK or similar type mechanisms.

RJ45 CAT6 cable placement, upon request, not included in the project.



QUALITY RESUME

SANITATION AND PLUMBING

Indoor water installation with multi-layer polyethylene pipe.

AACC-HEATING AND DHW

The planned thermal conditioning system is based on aerothermal technology that will be integrated into the kitchen area.

The preferred brand used will be a MIDEA, with an interior machine and an exterior machine on the deck.

The ventilation of the bathrooms will be carried out indirectly using a CATA brand extractor.



QUALITY RESUME

KITCHEN

Kitchen equipped with MIDEA or similar appliances:

- Extractor hood.
- Oven.
- Ceramic hob.
- Dishwasher.
- Fridge Freezer.
- Single bowl sink.

The kitchen floor will be imitation hydraulic ceramic at the same level as parquet.

BATHROOM

The bathrooms will be equipped with:

- Toilet with foot (Roca Brand or similar).
- Suspended bathroom furniture.
- Screen with fixed and sliding.
- Resin shower tray.
- Shower and taps in black or silver.
- Installation of mirror and lights according to project.

Floor and walls in humid areas finished in porcelain ceramic.

