

LOMAS UNIQUE

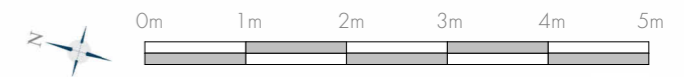
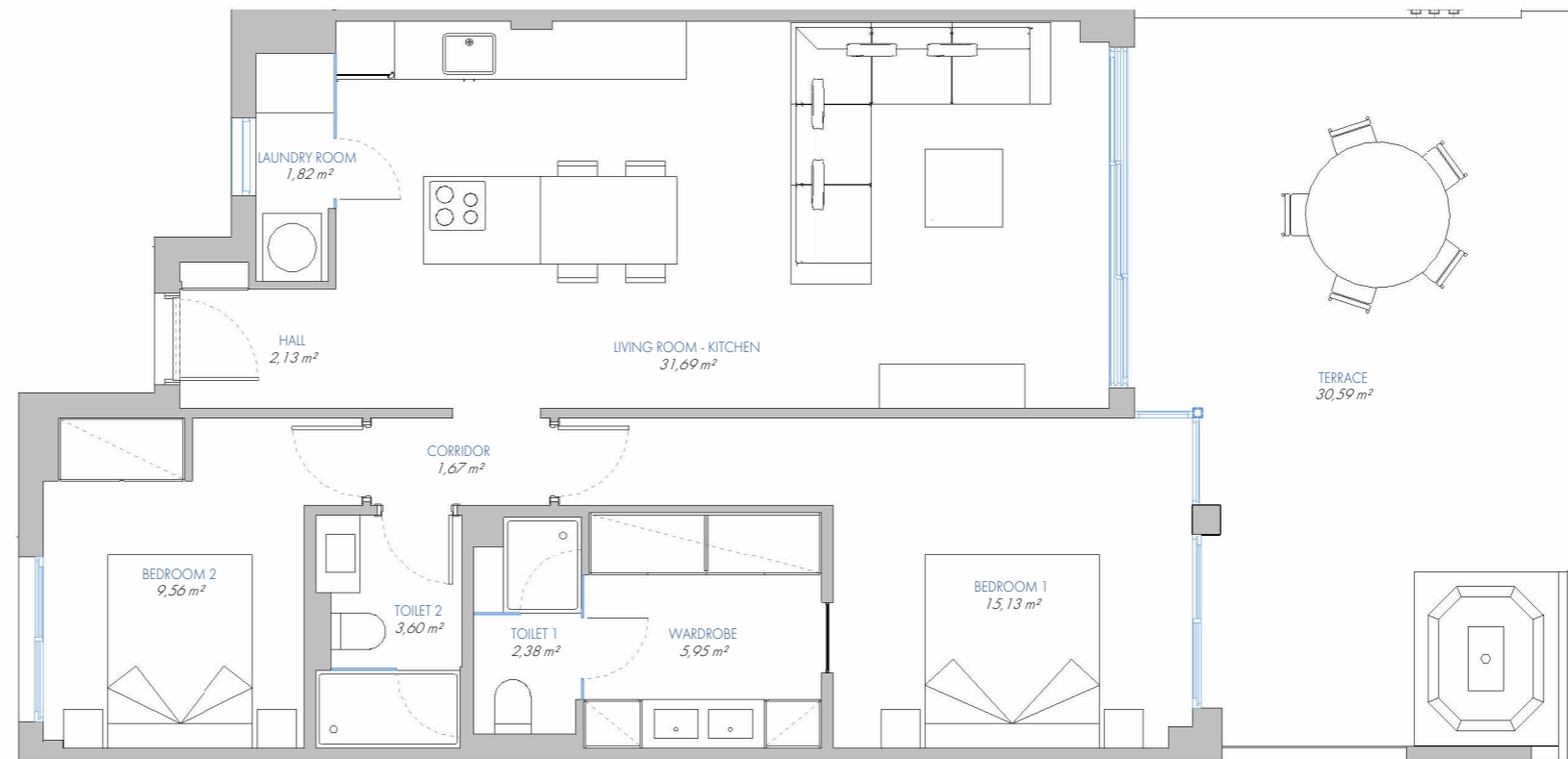
UNIQUE APARTMENT Nº 89

7.PB.B

BUILT AREA	
Living Area	84,79 m ²
Terrace Area	32,95 m ²
TOTAL BUILT AREA:	117,75 m²

ACCORDING TO D. 218/2005

Useful Area	81,32 m ²
Built Area	107,77 m ²



1:75