

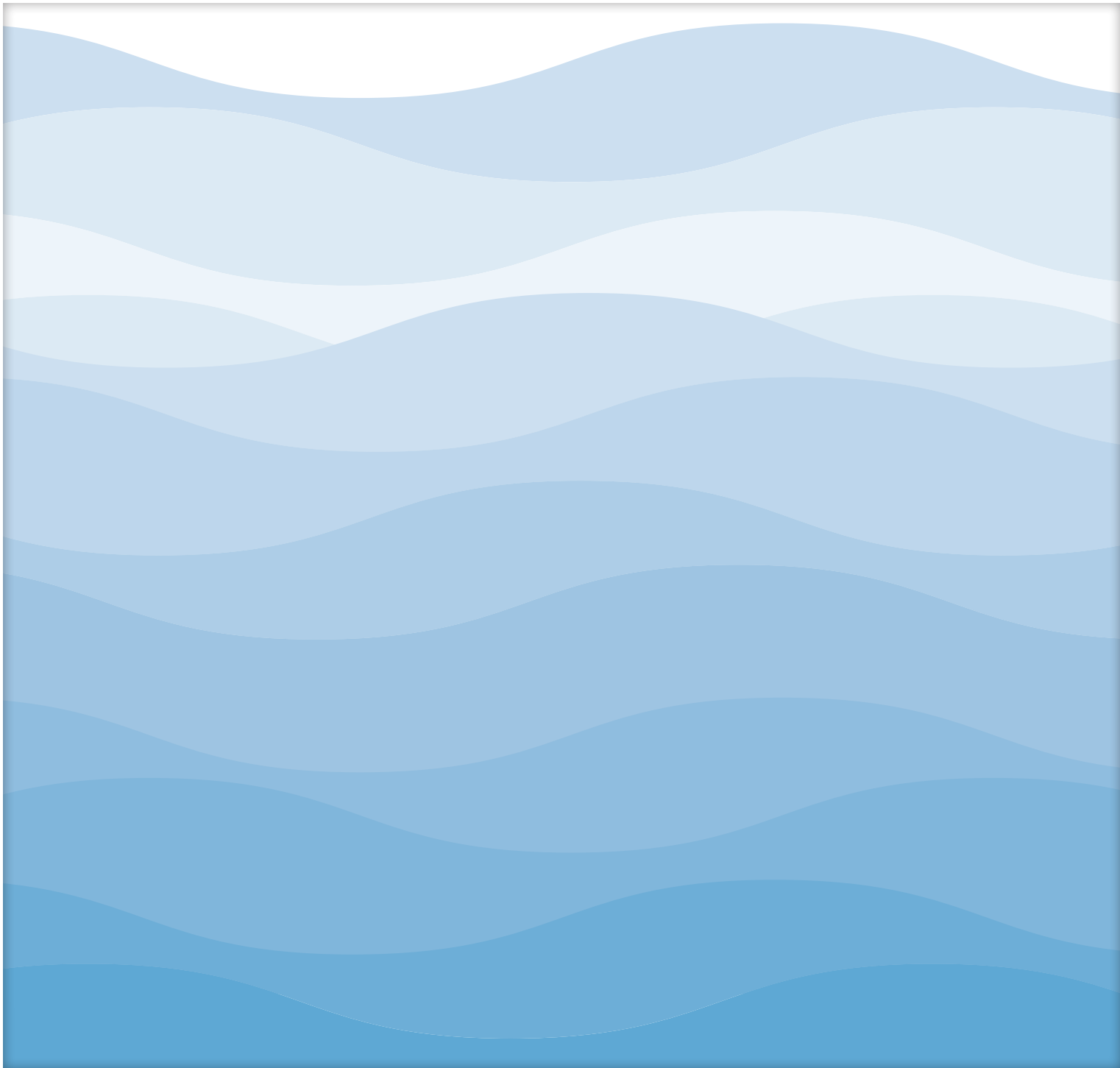


LUCAS FOX
INTERNATIONAL PROPERTIES

MÁLAGA · COSTA DEL SOL

Térmica Beach *Málaga*







Málaga

One of the world's leading residential
tourism destinations.

Index

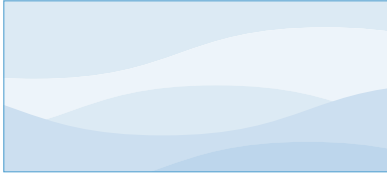
We are presenting one of the major
architectural landmarks of Malaga's skyline



Location

Front line beach in one of the most exclusive areas of Malaga

01



Project

Discover a world tailor-made for even the most demanding among us

02



Amenities

Everything residents could possibly need is to be found at Termica Beach

03



Quality

Details that make the difference: quality materials and finishes

04



Design

The cornerstone of the project highlights its unique, organic and functional character

05

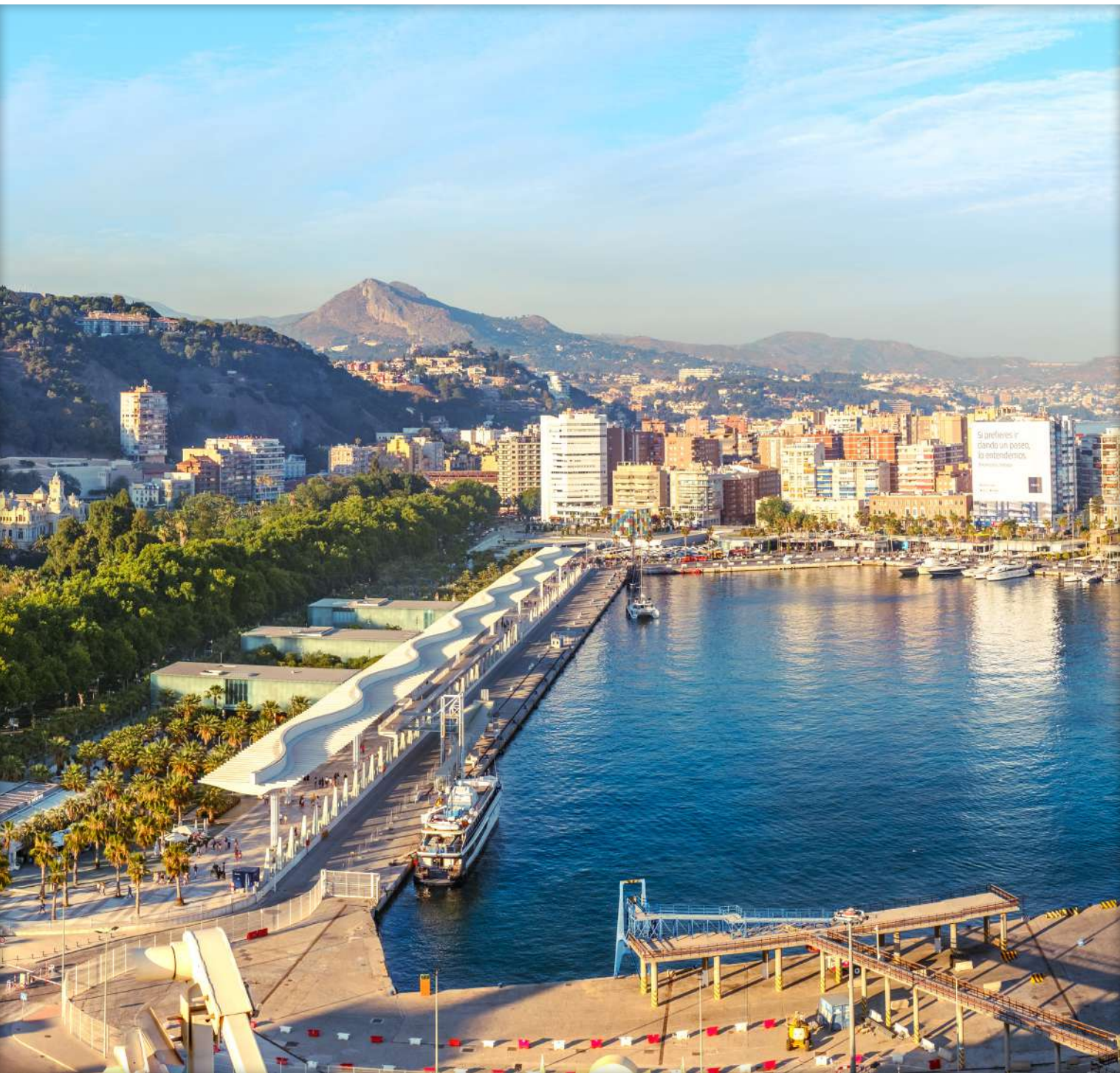
The background features large, stylized, overlapping blue shapes that resemble waves or abstract architectural forms. These shapes are composed of various shades of blue, from light to dark, and are layered to create a sense of depth and movement. A white rectangular box with a thin blue border is positioned in the center, containing the text.

Location

Frontline beach in one of the most exclusive areas of expansion









Málaga, the jewel of the Costa del Sol

On the warm waters of the Mediterranean, this city is a corner of Spain where history and modernity perfectly intertwine, achieving the transformation from an industrial to a cultural city.

Its coastline offers miles of golden sandy beaches and crystal-clear waters, ideal for relaxing or doing water sports. From the popular beach of La Malagueta to the quiet coves of Nerja.

Directly in front of the development is the approximately 2 km long Playa de la Misericordia beach where you can enjoy long walks with the relaxing background sounds of the sea and enjoy the gentle breeze of the Mediterranean.

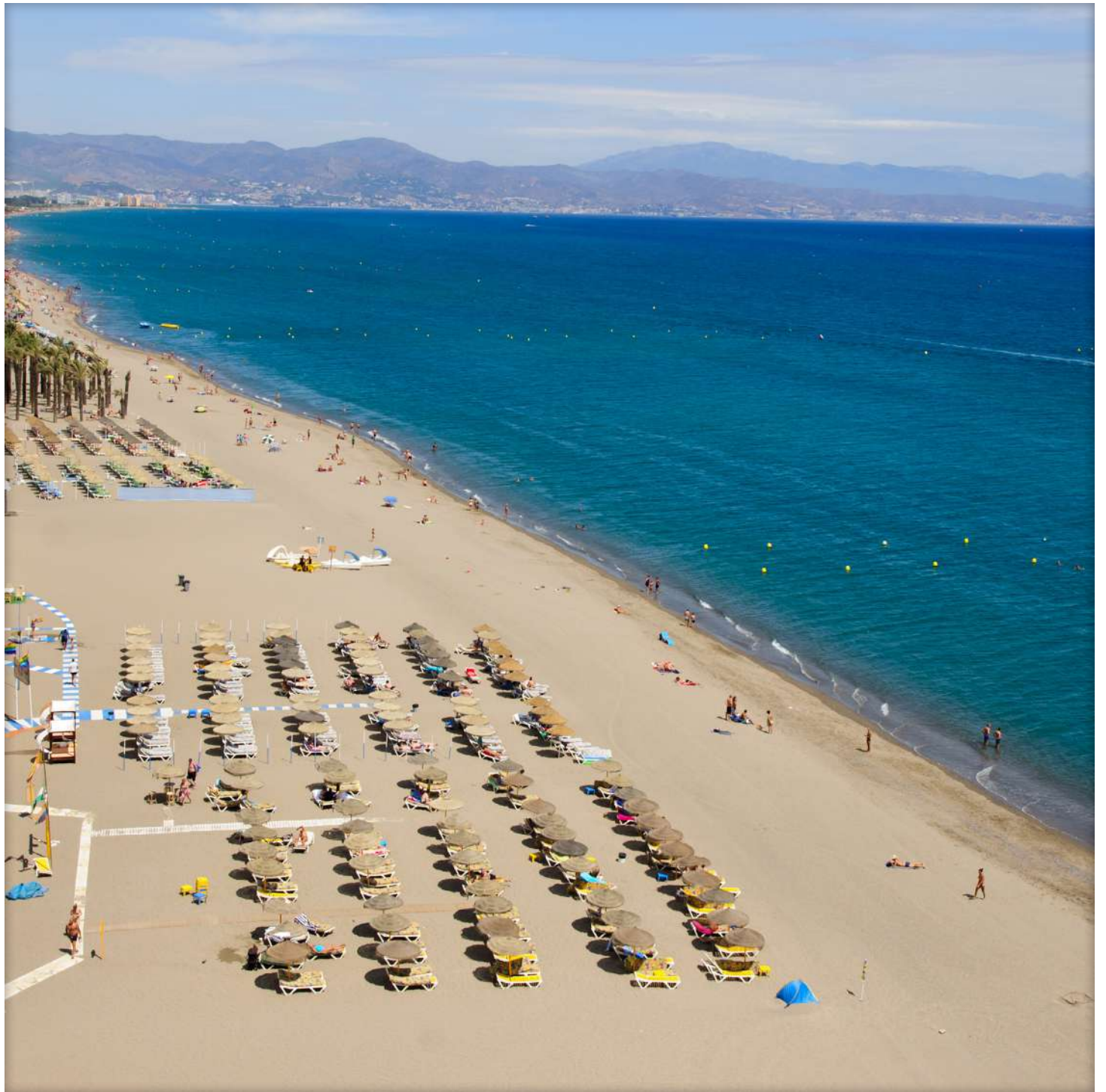
The place everyone is talking about

In addition to its scenic beauty, Malaga stands out for its Mediterranean climate, friendly atmosphere, gastronomy and culture. All these qualities have made Malaga the most chosen destination on the Costa del Sol.

From the narrow lanes of the old town to the wide, palm-lined avenues, every corner of this Mediterranean city tells a unique story.

To walk through the streets of Malaga is to discover its rich cultural heritage.

The historic buildings, picturesque squares and flower-filled courtyards offer a journey back in time, recalling the Moorish, Roman and Renaissance influences that have left their mark on the city's architecture.





A vibrant city

The streets of Malaga, however, also bear witness to its vibrant daily life. In its most popular districts, bursting with the vitality of local shops, you will find authentic treasures like the famous Atrazanas Market, a large number of restaurants where you can discover genuine traditional gastronomy and the spectacular Picasso Museum.

Its extensive network of national and international connections allows for easy mobility from any location, offering speed and convenience, making it a key hub.

Malaga - Maria Zambrano Station is a central node in the Spanish railway network, with high-speed train services (AVE) connecting the city centre with other cities such as Madrid, Barcelona and Valencia, as well as with other cities in Andalusia and the rest of Spain.

The port of Malaga

Located in the heart of the Bay of Malaga, the Port of Malaga is not only one of the most complete in Spain, but also one of the liveliest areas of the city.

All kinds of events and activities take place throughout the year, although it is in the summer months when activity increases.

Surrounded by some of the best beaches, such as La Playa de Huelin, its wide range of shops, boutiques and leisure and restaurant establishments make it an iconic symbol of the city where you can enjoy unique experiences.





A unique residential concept

Termica Beach is located in a natural setting, more specifically at the mouth of the Guadalhorce river, opposite a vast beach. A residential complex concept never seen before in Malaga.

With a nature-inspired design open to the outdoors, Termica Beach stands as a small island that has it all.



TÉRMIKA BEACH

La Térmica, a sustainable
conversion area



The location of Termica Beach is no coincidence. La Termica is a historic, previously industrial area that is undergoing a process of total sustainable reversion.

The former thermal plant has been transformed into an expanding residential area full of green spaces,

areas dedicated to residents' enjoyment and high standards of housing. In this environment, Termica Beach manages to merge sustainably while taking advantage of the natural resources around it.

An area made for maximum relaxation

Termica Beach is located in the area of La Termica, an enclave in a fully sustainable reconversion very close to Malaga Airport and the Guadalhorce delta, right on the beachfront.

A unique opportunity to experience Malaga's vibrant life in an area that provides maximum relaxation and yet has all types of amenities to hand. The perfect place to enjoy Malaga.

The life offered by Termica Beach is suitable for all lifestyles and ages, both for year-round residency and for holiday living. Termica Beach was conceived with the idea of offering an exceptional residential complex that provides maximum wellbeing for all its residents.



The background features a large, stylized letter 'P' on the left and a large number '4' on the right, both rendered in a gradient of blue shades. A small, light blue sphere is positioned in the upper right quadrant. A white rectangular box with a thin blue border is centered over the 'P' and contains the text.

Project

Discover a world tailor-made for even the most demanding among us










In harmony with the wind and the sea

Termica Beach was created to offer a new concept of residential development on the beachfront in Malaga. With a vertical layout spread over several floors that open to the outside and offer spectacular panoramic views.

The architecture of Termica Beach coexists in harmony with the landscape and adapts to residential needs, reducing solar incidence during the central hours of summer and favouring sunlight in winter. The residential complex benefits from natural resources and is designed to optimise both the consumption of the dwellings and to reduce the environmental impact of the entire complex.



One to four bedroom homes
Amazing sea views

Spacious terraces

Communal areas

Parking spaces





Inspired by the forms of nature

With an attractive aesthetic inspired by the rounded forms of nature, its façade is characterised by its undulating lines that are reminiscent of the waves of the sea.

In order for the building to blend in perfectly with its surroundings, the distribution of the façades and the use of the colour white make use of the thermoregulating power of the sea in the air conditioning of the various buildings, thus also reducing their energy consumption and significantly limiting CO₂ emissions. Inside, the plots have been laid out in islands to make the most of the space and provide better views of the sea, an attractive and innovative concept that makes it possible to use the best of the place.





Homes open to the Mediterranean Sea

Termica Beach offers dream homes inspired by nature where you can enjoy living in an exclusive residential complex with communal areas and different types of homes to suit your needs.

The complex features a system of staggered one to four bedroom homes, plus duplexes and penthouses that include a rooftop swimming pool and designer infinity pool. All homes have large terraces with spectacular sea views and an arothermal system for air conditioning, an ecological and environmentally friendly energy.







A large, stylized graphic of a blue wave, composed of several overlapping, curved bands of varying shades of blue, from light to dark. The wave is positioned in the background, curving around the central text box.

Amenities

Everything residents could possibly need
is to be found at Térmica Beach





An oasis of wellness and comfort

The development is designed for the enjoyment of all its inhabitants, with facilities adapted to all lifestyles and ages. More than 1,900m² of communal areas dedicated to providing maximum wellbeing: garden areas, indoor and outdoor infinity pool, gym, social club, sauna and spa, solarium, coworking room and children's area.







Infinity Pool

Infinity pool with spectacular sea views.
The perfect place to relax, have fun and
share the best moments.

Gym

Follow an active lifestyle without having to travel. Do sport in the gym and get fit in your free time.



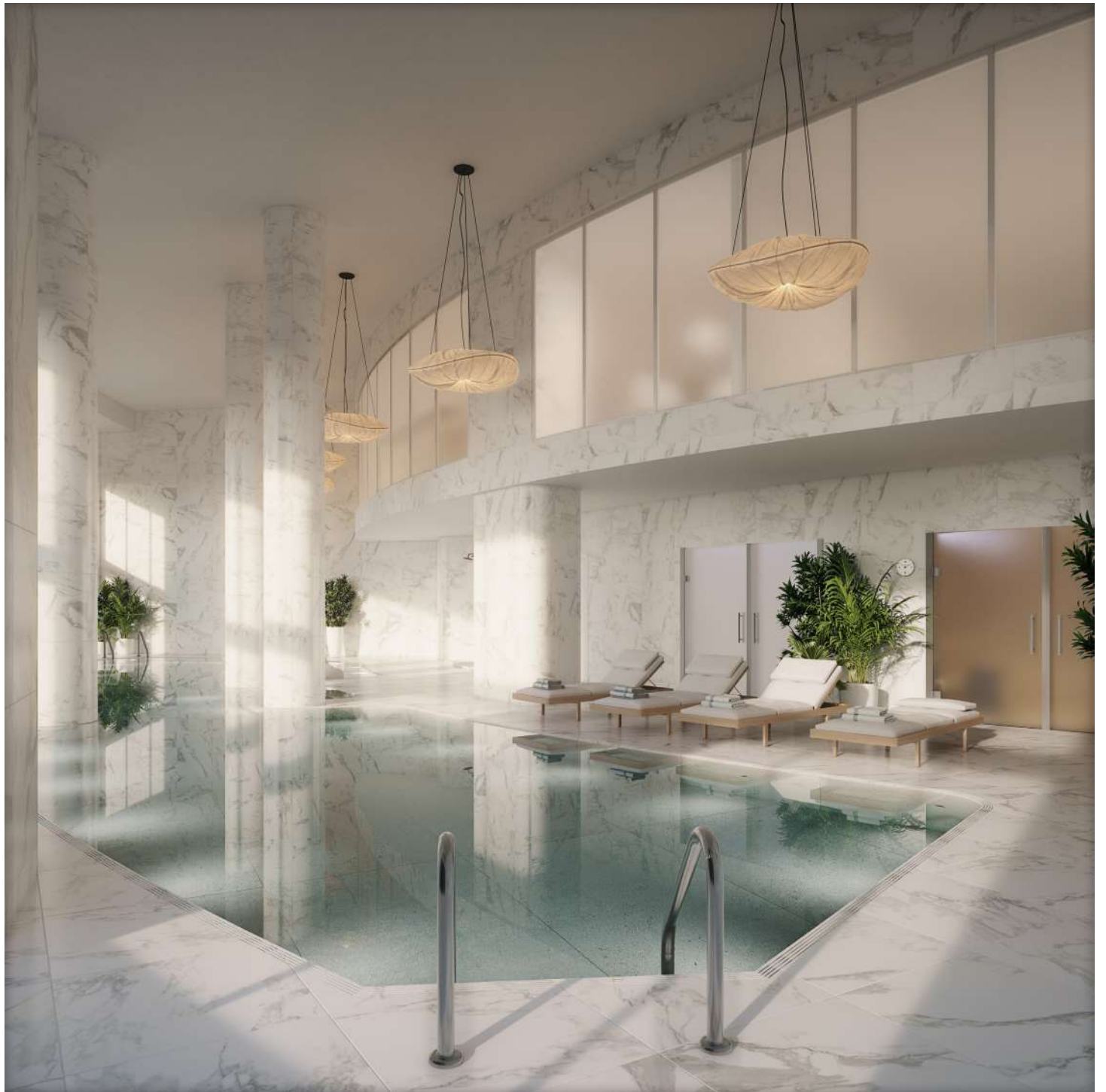


Coworking space

Modern space with comfortable work areas, ideal for promoting productivity and collaboration.

Sauna Spa

The spa area is the perfect place to take care of your wellbeing, relax, disconnect, and in short, take time for yourself.





Kids' Area

An area designed for the little ones' enjoyment with children's games for different ages.



Quality

Details that make the difference:
quality materials and finishes





Foundations and structure

Reinforced concrete structure above ground level - calculated in accordance with current regulations and the Technical Building Code. The foundations will be designed in accordance with the conclusions of the Geotechnical Study.

Partition walls

Partition walls between dwellings made of brick masonry, lined on both sides with self-supporting, insulating partition walls and double laminated plasterboard. Separation between dwellings and communal areas: self-supporting brickwork on the inside and dry/mixed partitioning on the outside.

Interior partitioning: self-supporting type, with insulation and double laminated plasterboard in dry areas and single WR board in wet areas. False ceilings of laminated plasterboard.

Roofs and terraces

Terraces with non-slip porcelain stoneware finish.

Flooring

General flooring in large-format porcelain stoneware tiles in the living area during the day, with the option of laminate flooring in the night area.



Plumbing and sanitary fittings

Washbasins to be defined in bathrooms.

Cold-opening, single-lever washbasin mixer taps in secondary bathrooms.

Vanity unit with washbasin and mirror in bathrooms.

Wall-hung toilets with concealed cistern and flush push button in bathrooms.

Extra flat shower tray.

Shower screens.

Thermostatic shower cubicle with overhead shower in main bathroom.

Washbasin to be defined in toilets.

Ecological flow taps in compliance with BREEAM certification.

Façades

Two-ply enclosure, the main one in perforated brick, acoustic and thermal insulation, and a double layer of laminated plaster. On the exterior, prefabricated panel cladding. Continuous false ceiling for outdoor use. Glass terrace balustrades.

Carpentry

Exterior: aluminium in a colour to be defined and double glazing with air cavity. Motorised blinds in all bedrooms, and in all properties located on the ground floor.

Interior: reinforced entrance door with security fittings and 3-point security lock.

Lacquered interior doors. Floor-to-ceiling built-in wardrobes with lacquered hinged doors, with LED lighting, internally lined with textile finished casings and fitted with drawer units and hanging rails.

Interior Cladding

Vertical walls of housing units coated with paint, colour to be defined. In the bathrooms, combination of porcelain stoneware tiling and decorative cladding according to the plan.



Installations and equipment

DHW generation and heating by aerothermal energy. Direct expansion air-conditioning system. Underfloor heating. Fibre optic installation in the buildings and homes according to the Telecommunications Plan. TV and data sockets located in the living room and all bedrooms. Domatics in homes and communal areas. Installation of video door entry system. Mechanical ventilation system.

Kitchens

Exclusively designed, fully furnished kitchens, including electrical appliance.





Entrances

Natural stone or porcelain stoneware flooring. Walls with stone or stoneware cladding. Outdoor flooring made of paving stones on the ground floor. Hinged entrance door.

Garages and motorbike parking spaces

Automatic sectional-type door. Pre-installation of charging point for electric vehicles as required by regulations. Concrete floor screed with surface treatment. Parking and motorbike space signage. Ventilation and fire protection measures in accordance with regulations.



Stairs

Metal railings with banisters. LED lighting in communal areas activated by presence detectors.

Storage rooms

Painted vertical walls and tiled floors.

Lifts

With accessible cabins and high quality interior fittings.
Access to all floors and underground levels.



Communal space facilities and equipment

Installation of LED lighting in doorways and stairwells, operated by presence detectors. Outdoor lighting for pedestrian access and landscaped areas. Laminated glass or wire mesh railings. Provision of bicycle racks.

Swimming Pool

Infinity-type swimming pool Porcelain stoneware tiling of the pool and pool-side, anti-slip flooring. Equipped with showers, life rings and portable lifts for the disabled. Sunbathing area.

Landscaped areas

Landscaped area with Mediterranean plants with low water consumption, adapted to the local climate. WPC composite flooring in the living areas. Rubber paving, synthetic grass and gravel in the play area. Provision of wooden or concrete benches.

Amenities

Fully equipped gymnasium.
Sauna, Turkish bath and spa with heated pool.
Toilets, changing rooms and showers.
Play area.
Co-working space and meeting room.
Audiovisual room.

Entrance 2 Floor 10 Door C

SURFACES

Total useful surface area inside	53,65 m ²
Total useful surface area outside	21,56 m ²
Total constructed surface area (enclosed + terraces)	85,50 m ²
Built surface area with cc.aa	104,53 m ²

DECRETO 218/2005

Useful surface area	59,01 m ²
Constructed surface area	87,94 m ²





NORTH



GRAPHIC SCALE



NOTICE: This commercial plan, which includes a graphic part and data relating to surfaces, may be subject to modifications ordered by the competent public organizations and/or technical or legal requirements, as long as they are justified and do not involve substantial alterations. The furniture shown is not included and the equipment of the property will be as indicated in the corresponding quality report.

Entrance 1 Floor 1 Door A

SURFACES

Total useful surface area inside	83,83 m ²
Total useful surface area outside	84,13 m ²
Total constructed surface area (enclosed + terraces)	188,38 m ²
Built surface area with cc.aa	221,68 m ²

DECRETO 218/2005

Useful surface area	92,21 m ²
Constructed surface area	142,55 m ²





NORTH



GRAPHIC SCALE



NOTICE: This commercial plan, which includes a graphic part and data relating to surfaces, may be subject to modifications ordered by the competent public organizations and/or technical or legal requirements, as long as they are justified and do not involve substantial alterations. The furniture shown is not included and the equipment of the property will be as indicated in the corresponding quality report.

Entrance 1 Floor 3 Door A

SURFACES

Total useful surface area inside	105,81 m
Total useful surface area outside	92,64 m ²
Total constructed surface area (enclosed + terraces)	223,47 m ²
Built surface area with cc.aa	265,49 m ²

DECRETO 218/2005

Useful surface area	116,39 m ²
Constructed surface area	177,42 m ²

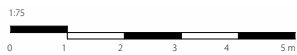




NORTH



GRAPHIC SCALE



NOTICE: This commercial plan, which includes a graphic part and data relating to surfaces, may be subject to modifications ordered by the competent public organizations and/or technical or legal requirements, as long as they are justified and do not involve substantial alterations. The furniture shown is not included and the equipment of the property will be as indicated in the corresponding quality report.

Entrance 1 Floor 5 Door A

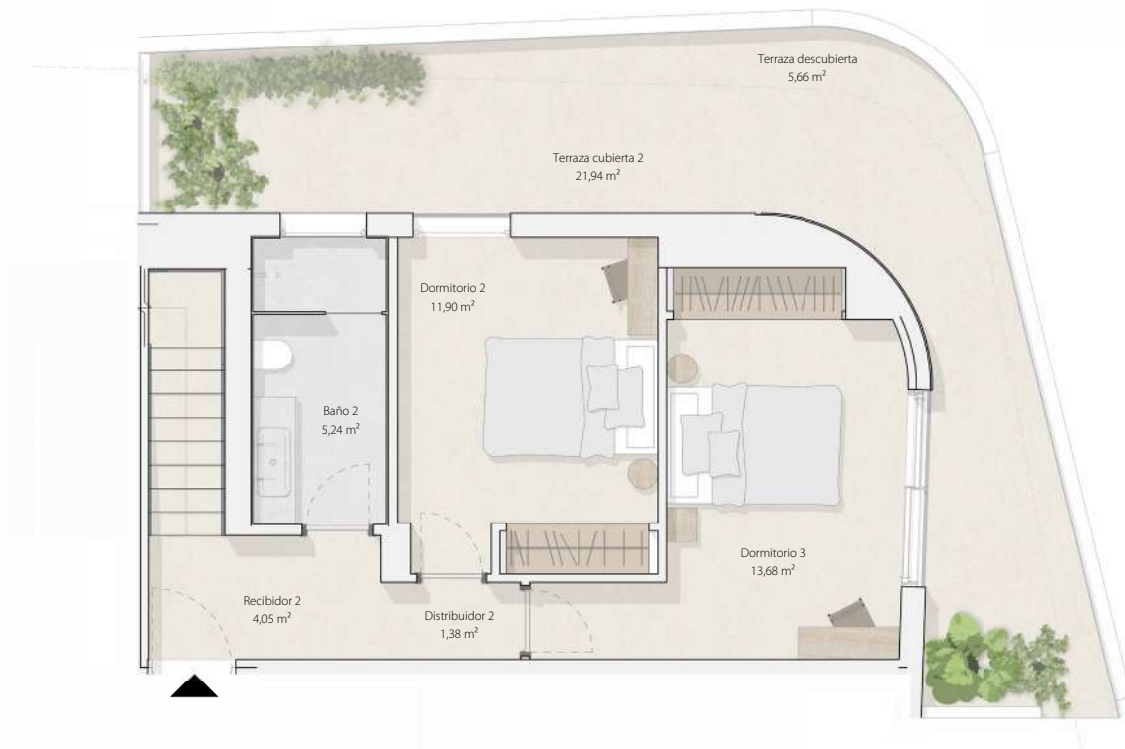
SURFACES

Total useful surface area inside	160,16 m ²
Total useful surface area outside	383,16 m ²
Total constructed surface area (enclosed + terraces)	620,25 m ²
Built surface area with cc.aa	683,86 m ²

DECRETO 218/2005

Useful surface area	176,16 m ²
Constructed surface area	275,66 m ²





NORTH

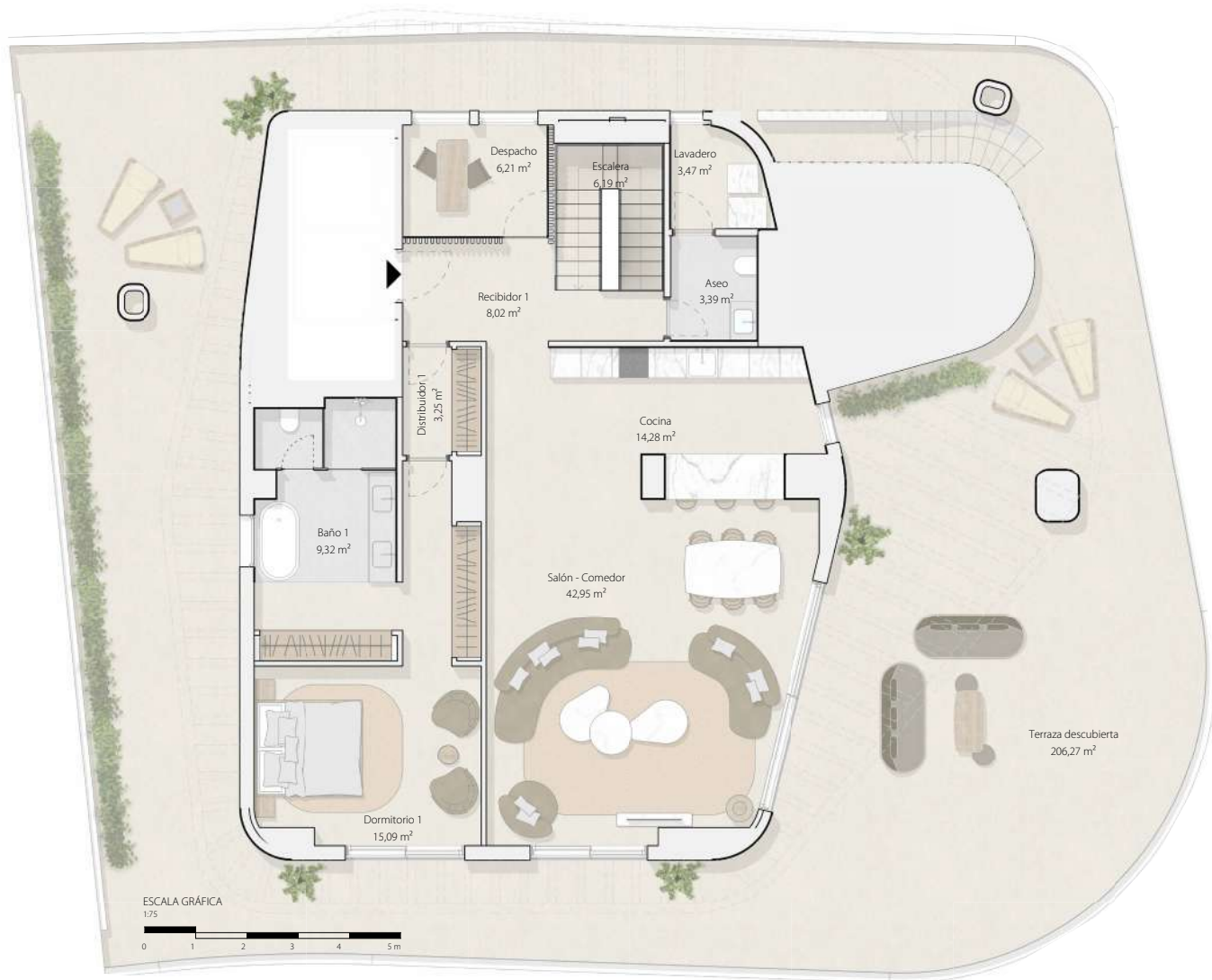


GRAPHIC SCALE



NOTICE: This commercial plan, which includes a graphic part and data relating to surfaces, may be subject to modifications ordered by the competent public organizations and/or technical or legal requirements, as long as they are justified and do not involve substantial alterations. The furniture shown is not included and the equipment of the property will be as indicated in the corresponding quality report.

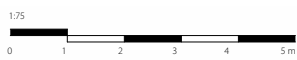
THREE-BEDROOM PENTHOUSE DUPLEX PLAN WITH POOL



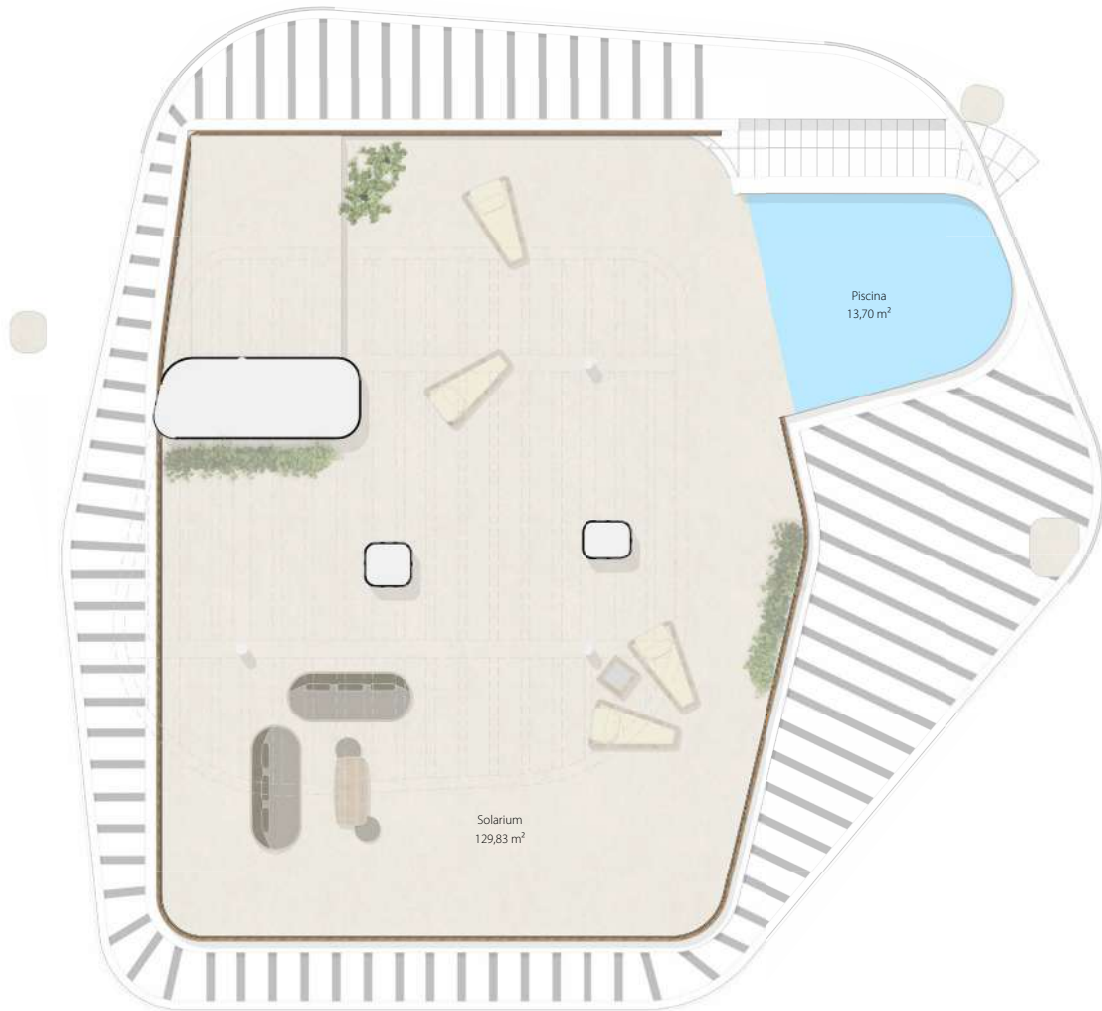
NORTH



GRAPHIC SCALE



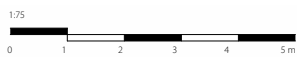
NOTICE: This commercial plan, which includes a graphic part and data relating to surfaces, may be subject to modifications ordered by the competent public organizations and/or technical or legal requirements, as long as they are justified and do not involve substantial alterations. The furniture shown is not included and the equipment of the property will be as indicated in the corresponding quality report.



NORTH



GRAPHIC SCALE



NOTICE: This commercial plan, which includes a graphic part and data relating to surfaces, may be subject to modifications ordered by the competent public organizations and/or technical or legal requirements, as long as they are justified and do not involve substantial alterations. The furniture shown is not included and the equipment of the property will be as indicated in the corresponding quality report.

Entrance 4 Floor 8 Door A

SURFACES

Total useful surface area inside	166,97 m ²
Total useful surface area outside	385,23 m ²
Total constructed surface area (enclosed + terraces)	602,13 m ²
Built surface area with cc.aa	664,29 m ²

DECRETO 218/2005

Useful surface area	184,25 m ²
Constructed surface area	275,84 m ²

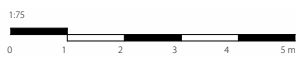




NORTH



GRAPHIC SCALE



NOTICE: This commercial plan, which includes a graphic part and data relating to surfaces, may be subject to modifications ordered by the competent public organizations and/or technical or legal requirements, as long as they are justified and do not involve substantial alterations. The furniture shown is not included and the equipment of the property will be as indicated in the corresponding quality report.

Entrance 7 Floor 4 Door D

SURFACES

Total useful surface area inside	195,77 m ²
Total useful surface area outside	464,63 m ²
Total constructed surface area (enclosed + terraces)	729,57 m ²
Built surface area with cc.aa	807,07 m ²

DECRETO 218/2005

Useful surface area	215,35 m ²
Constructed surface area	326,95 m ²

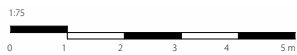




NORTH



GRAPHIC SCALE



NOTICE: This commercial plan, which includes a graphic part and data relating to surfaces, may be subject to modifications ordered by the competent public organizations and/or technical or legal requirements, as long as they are justified and do not involve substantial alterations. The furniture shown is not included and the equipment of the property will be as indicated in the corresponding quality report.

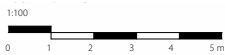
FOUR-BEDROOM PENTHOUSE DUPLEX PLAN WITH POOL



NORTH



GRAPHIC SCALE



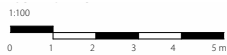
NOTICE: This commercial plan, which includes a graphic part and data relating to surfaces, may be subject to modifications ordered by the competent public organizations and/or technical or legal requirements, as long as they are justified and do not involve substantial alterations. The furniture shown is not included and the equipment of the property will be as indicated in the corresponding quality report.



NORTH



GRAPHIC SCALE



NOTICE: This commercial plan, which includes a graphic part and data relating to surfaces, may be subject to modifications ordered by the competent public organizations and/or technical or legal requirements, as long as they are justified and do not involve substantial alterations. The furniture shown is not included and the equipment of the property will be as indicated in the corresponding quality report.







Design

The cornerstone of the project highlights its unique, organic and functional character





François Leclerq

French architect and founder of Studio Leclerq.

To make Térmica Beach possible, François Leclerq was inspired by the rounded shapes, the greenery and the environment of two exceptional natural sites in Malaga: Torcal de Antequera and Delta de Guadalhorce.

“The project is structured around the land, the sea and the sky. This was my great reference point: the environment. And that allows the buildings to become a privileged hill, islands alongside a delta, neo-natural elements away from the tower system”. “Sustainability is essential. Mandatory. If we have to talk about a central element, it is the ecology. Térmica Beach recycles rainwater, the façade is naturally ventilated thanks to the sea breeze and the greenery, and the white colour regulates the temperature. Together with the choice of the best materials, this ensures that the buildings are ideal living spaces”.



www.lucasfox.com

LUCAS FOX MÁLAGA

Rodolfo N. Lamagrande

+34 607 88 39 64

rodolfo.nunez@lucasfox.es

Charlotte Soane

+34 604 45 25 21

charlotte.soane@lucasfox.es