



# T/ERRA V/VA

DESIGN INSPIRED BY  
AUTOMOBILI LAMBORGHINI





T/ERRA V/VA

MAGNETIC  
ATTRACTION

A Limited Collection of  
Super-Luxury Villas in the  
Hills of Costa del Sol with  
Design Inspired by Automobili  
Lamborghini





# THE MYTH

Founded in 1963, Automobili Lamborghini is the epitome of luxury super sports cars made of innovative technology and futuristic lines. An Italian excellence that is still based in Sant'Agata Bolognese where it all started.

The true essence of Lamborghini DNA is represented in this futuristic and elegant architectural project complemented with interiors inspired by the super sports car design, thanks to incomparable craftsmanship and passion.





T/ERRA V/VA

## A STATEMENT OF POWER

Welcome to Tierra Viva, an ultra-luxury, gated community nestled in the prestigious hills of Benahavís, just minutes from the Mediterranean Sea. With only a limited number of villas available and an exclusive clubhouse to relax, network, and unwind, this is not just a place to live. It is a place to belong.

CRAFTED BY DARGLOBAL.  
INSPIRED BY LAMBORGHINI.







# THE SEA, YOUR NEIGHBOUR

Benahavís | Marbella | Costa del Sol

Tierra Viva offers a life at the intersection of nature and sophistication. Located in the heart of the Costa del Sol, this enclave offers panoramic sea views, 12 nearby golf courses, and proximity to elite hotspots such as Puerto Banús, Marbella Club, and Nobu Hotel Marbella.

With Malaga International Airport just 45 minutes away, global access meets serene retreat.





La Zagaleta

# COSTA DEL SOL



MARBELLA

Marbella Club  
Golf Resort

BENAHAVIS

T/ERRA V/VA

Marbella Club  
Golden Mile

Nobu Hotel  
Marbella

Puerto Banús

Anantara Villa  
Padierna Palace



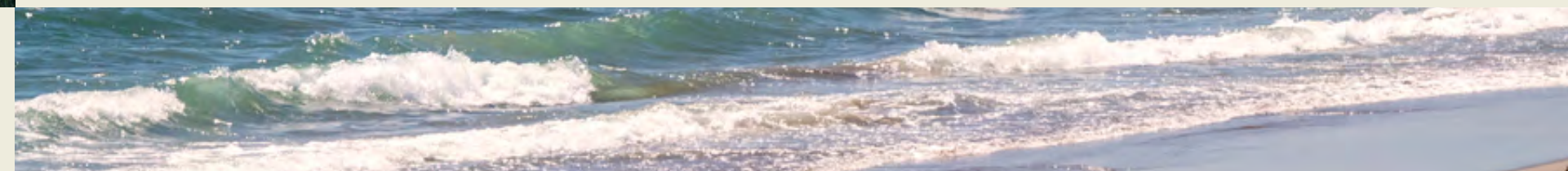
SPAIN

|        |                              |
|--------|------------------------------|
| 05 MIN | MEDITERRANEAN SHORES         |
| 12 MIN | PUERTO BANÚS                 |
| 16 MIN | MARBELLA CLUB GOLDEN MILE    |
| 18 MIN | NOBU HOTEL MARBELLA          |
| 40 MIN | GIBRALTAR                    |
| 45 MIN | MÁLAGA-COSTA DEL SOL AIRPORT |



## A LIFE OF RARITY

Tierra Viva is a fully gated residential complex with 24/7 premium security, private entrance, and tranquil landscaped surroundings. Every villa is situated at a unique elevation, offering uninterrupted views of the Mediterranean sea.





A SOOTHING VISION FOR THE SOUL

*Views of Marbella and the Costa Del Sol, as seen from the vantage point of Tierra Viva.*



T/ERRA V/VA



## THE CLUBHOUSE NETWORK OR RELAX

At the heart of Tierra Viva is the exclusive Clubhouse - a members-only sanctuary for wellness, leisure, and social moments. Reserved for residents and select invitees.





CLUBHOUSE  
AMENITIES



GYM



SAUNA

HAMMAM



JACUZZIS

OUTDOOR POOL

CHILDREN'S PLAY AREA

OWNER'S LOUNGE

VELOCITY BAR & LOUNGE



T/ERRA V/VA



# VELOCITY BAR & LOUNGE

A sophisticated bar lounge, open  
exclusively to select external  
guests by reservation only.





T/ERRA V/VA



PAINITE VILLA  
(5-BEDROOMS)



DIAMANTE VILLA  
(6-BEDROOMS)



ZAFIRO VILLA  
(5-BEDROOMS)



ESMERALDA VILLA  
(4-BEDROOMS)

SINGULAR  
DNA

A collection of four distinct villas,  
each inspired by precious stones and  
Lamborghini's legacy of power and  
purity.





PAINITE VILLA

T/ERRA V/VA



T/ERRA V/VA



# PAINITE VILLA

5 BEDROOMS

This five-bedroom residence features a private car elevator with two-level access, allowing you to display your vehicle as a true piece of art - inside your home.





T/ERRA V/VA

/ PAINITE VILLA

DAR  
GLOBAL





T/ERRA V/VA

/ PAINITE VILLA

## NEVER PART WITH WHAT YOU LOVE

Protect your car from outdoor  
challenges such as bad weather.





T/ERRA V/VA

/ PAINITE VILLA

DAR  
GLOBAL







DIAMANTE VILLA

T/ERRA V/VA



# DIAMANTE VILLA

6 BEDROOMS

This six-bedroom residence spans four levels, with panoramic terraces and expansive interiors designed for elevated family living - perfect for social gatherings, Sunday BBQs, or simply living large.





T/ERRA V/VA

/ DIAMANTE VILLA

DAR  
GLOBAL





T/ERRA VIVA

/ DIAMANTE VILLA

DAR  
GLOBAL





T/ERRA VIVA

/ DIAMANTE VILLA

DAR  
GLOBAL





T/ERRA VIVA

/ DIAMANTE VILLA

DAR  
GLOBAL







ZAFIRO VILLA

T/ERRA V/VA



T/ERRA V/VA



# ZAFIRO VILLA

5 BEDROOMS

This five-bedroom hillside residence offers panoramic rooftop views, a wine cellar, and versatile spaces that adapt to your lifestyle – whether it's a private gym, studio, or a place to unwind in style.





T/ERRA V/VA

/ ZAFIRO VILLA

DAR  
GLOBAL





T/ERRA V/VA

/ ZAFIRO VILLA



DAR  
GLOBAL





T/ERRA V/VA

/ ZAFIRO VILLA

DAR  
GLOBAL





T/ERRA V/VA

/ ZAFIRO VILLA

DAR  
GLOBAL







ESMERALDA VILLA

T/ERRA V/VA



# ESMERALDA VILLA

4 BEDROOMS

This four-bedroom villa is designed for total relaxation, featuring serene terraces, a home theatre, and wellness spaces like steam and sauna rooms - your private retreat in the hills.





T/ERRA VIVA

/ ESMERALDA VILLA

DAR  
GLOBAL





T/ERRA V/VA / ESMERALDA VILLA

DAR  
GLOBAL





T/ERRA V/VA

/ ESMERALDA VILLA

DAR  
GLOBAL





T/ERRA V/VA

/ ESMERALDA VILLA

DAR  
GLOBAL





T/ERRA V/VA

/ ESMERALDA VILLA





T/ERRA V/VA

/ ESMERALDA VILLA

DAR  
GLOBAL





SPECIFICATIONS  
& FLOOR PLANS

DISCLAIMER

All pictures, plans, layouts, information, data and details included in this brochure are indicative only and may change at any time up to the final 'as built' status in accordance with final designs of the project, regulatory approvals and planning permissions. All accessories and interior finishes such as wallpaper, chandeliers, furniture, electronics, white goods, curtains, hard and soft landscaping, pavements, features, gym, and other elements displayed in the brochure, or between the plot boundary, are not part of the unit and are shown for illustrative purposes only.



SPECIFICATIONS

GENERAL

- EXTERNAL GLAZING: Double Glazed Windows
- BOUNDARY WALL: Concrete Boundary wall on the Sides and Rear
- OUTDOOR SPACE: Area between side and rear boundary wall to the building will be levelled /graded
- ELEVATOR: Passenger Elevator
- HEATING/COOLING: Aerothermia Heating and Cooling system from Daikin, Vaillant or similar
- DRIVEWAY / PARKING: Precast concrete pavers

FOYER

- FLOOR: Local Marble or similar
- SKIRTING: Local Marble or similar
- WALLS: Plastered walls with emulsion paint
- CEILING: Gypsum ceiling with emulsion paint

LIVING ROOM / DINING

- FLOOR: Local Marble or similar
- SKIRTING: Local Marble or similar
- WALLS: Plastered walls with emulsion paint
- CEILING: Gypsum ceiling with emulsion paint

KITCHEN

- FLOOR: Porcelain Marble Look or similar from Cosentino, Inalco or similar
- SKIRTING: Porcelain Marble Look or similar from Cosentino, Inalco or similar
- WALLS: Wall panels
- CEILING: Gypsum ceiling with emulsion paint
- COUNTERTOP: Engineered Stone or similar from Cosentino, Inalco or similar
- CABINETS: Joinery with lacquered or laminate finish
- APPLIANCES: Built-in Appliances (Fridge, Oven, Hob, Hood, and Dishwasher)
- BRAND: Miele or similar

BEDROOMS

- FLOOR: Porcelain Marble Look or similar from Cosentino, Inalco or similar
- SKIRTING: Porcelain Marble Look or similar from Cosentino, Inalco or similar
- WALLS: Plastered walls with emulsion paint
- CEILING: Gypsum ceiling with emulsion paint
- WARDROBE: Joinery with lacquered or laminate finish

BATHROOMS

- FLOOR: Porcelain Marble Look or similar from Cosentino, Inalco or similar
- WALLS: Porcelain Marble Look or similar from Cosentino, Inalco or similar
- CEILING: Moisture resistant gypsum ceiling finished with paint
- COUNTERTOP: High Quality Solid Surface or similar
- JOINERY: Joinery with lacquered / laminate finish
- SANITARY FIXTURES: Duravit , hansgrohe, gessi or similar
- SANITARYWARE: Duravit, Villeroy & Boch or similar
- MIRROR: Included

BASEMENT HALLWAY

- FLOOR: Porcelain Marble Look or similar from Cosentino, Inalco or similar
- SKIRTING: Porcelain Marble Look or similar from Cosentino, Inalco or similar
- WALLS: Plastered walls with emulsion paint from Cosentino, Inalco or similar
- CEILING: Gypsum ceiling with emulsion paint



SPECIFICATIONS

SAUNA & STEAM

Mechanical, Electrical and Plumbing provisions to be provided.

SERVICE KITCHEN

- FLOOR: Porcelain tile or similar from Cosentino, Inalco or similar
- SKIRTING: Porcelain tile or similar from Cosentino, Inalco or similar
- WALLS: Wall panels
- CEILING: Gypsum ceiling with emulsion paint
- COUNTERTOP: Engineered Stone or similar from Cosentino, Inalco or similar
- CABINETS: Joinery with lacquered / laminate finish

SPA ROOM

- FLOOR: Porcelain tile or similar from Cosentino, Inalco or similar
- WALLS: Porcelain tile or similar from Cosentino, Inalco or similar
- CEILING: Moisture resistant gypsum ceiling finished with paint
- COUNTERTOP: High Quality Solid Surface or similar
- JOINERY: Joinery with lacquered / laminate finish
- SANITARY FIXTURES: Duravit or similar
- SANITARYWARE: Duravit, Villeroy & Boch or similar
- MIRROR: Included
- LOCKERS, BENCH AND FURNITURE: not included

MULTIPURPOSE ROOM/GYM

- FLOOR: Porcelain Marble Look or similar from Cosentino, Inalco or similar
- SKIRTING: Porcelain tile or similar from Cosentino, Inalco or similar
- WALLS: Plastered walls with emulsion paint
- CEILING: Gypsum ceiling with emulsion paint

HOME THEATRE

- FLOOR: Porcelain tile or similar from Cosentino, Inalco or similar
- SKIRTING: Porcelain tile or similar from Cosentino, Inalco or similar
- WALLS: Plastered walls with emulsion paint
- CEILING: Gypsum ceiling with emulsion paint
- Any carpet, furniture, and electronics not included.

MAIDS, STORAGE & LAUNDRY

- FLOOR: Porcelain tile or similar from Cosentino, Inalco or similar
- SKIRTING: Porcelain tile or similar from Cosentino, Inalco or similar
- WALLS: Plastered walls with emulsion paint
- CEILING: Gypsum ceiling with emulsion paint

MAIDS BATHROOMS

- FLOOR: Porcelain tile or similar from Cosentino, Inalco or similar
- WALLS: Porcelain tile or similar from Cosentino, Inalco or similar
- CEILING: Moisture resistant gypsum ceiling finished with paint
- COUNTERTOP: Solid Surface or similar
- SANITARY FIXTURES: Duravit or similar
- SANITARYWARE: Duravit, Villeroy & Boch or similar
- MIRROR: Included



# TIERRA VIVA MASTERPLAN

-  PAINITE VILLA  
5-bedrooms
-  DIAMANTE VILLA  
6-bedrooms
-  ZAFIRO VILLA  
5-bedrooms
-  ESMERALDA VILLA  
4-bedrooms





T/ERRA V/VA



PAINITE  
VILLA

|                   |         |                         |  |
|-------------------|---------|-------------------------|--|
| 5 - B E D         | S Q M   | 6 8 9 . 7 8             | <b>Disclaimer:</b> All pictures, plans, layouts, information, data and details included in this brochure are indicative only and may change at any time up to the final 'as built' status in accordance with final designs of the project, regulatory approvals and planning permissions. All accessories and interior finishes such as wallpaper, chandeliers, furniture, electronics, white goods, curtains, hard and soft landscaping, pavements, features, gym, and other elements displayed in the brochure, or between the plot boundary, are not part of the unit and are shown for illustrative purposes only. |
|                   | S Q F T | 7 , 4 2 4 . 7 3         |  |
| P L O T   S I Z E |         | S Q M   2 , 4 7 5 . 7 1 | S Q F T   2 6 , 6 4 8 . 3 2  |

Including total indoor & outdoor built up area.



SEA VIEWS

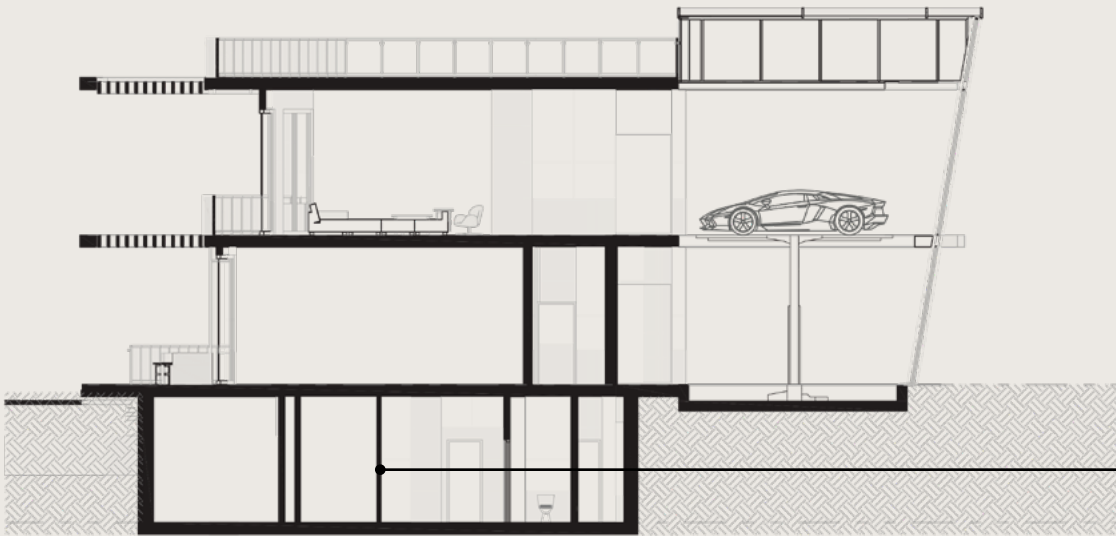
GOLF VIEWS



PAINITE  
VILLA

|                   |                            |
|-------------------|----------------------------|
| 5 - B E D         | S Q M<br>6 8 9 . 7 8       |
|                   | S Q F T<br>7 , 4 2 4 . 7 3 |
| P L O T   S I Z E |                            |
| S Q M             | 2 , 4 7 5 . 7 1            |
| S Q F T           | 2 6 , 6 4 8 . 3 2          |

Including total indoor & outdoor built up area.



BASEMENT



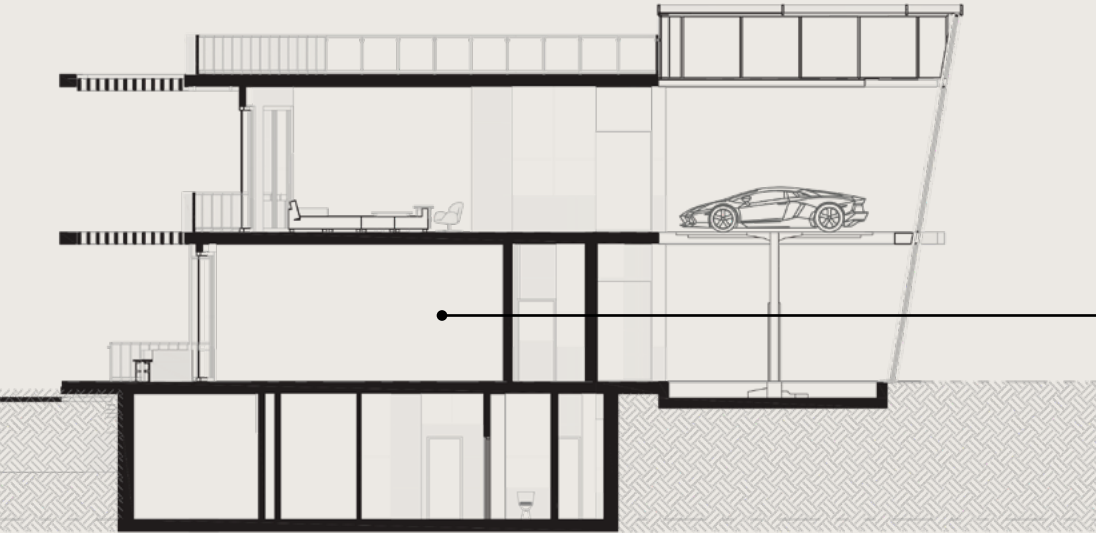
**Disclaimer:** All pictures, plans, layouts, information, data and details included in this brochure are indicative only and may change at any time up to the final 'as built' status in accordance with final designs of the project, regulatory approvals and planning permissions. All accessories and interior finishes such as wallpaper, chandeliers, furniture, electronics, white goods, curtains, hard and soft landscaping, pavements, features, gym, and other elements displayed in the brochure, or between the plot boundary, are not part of the unit and are shown for illustrative purposes only.



PAINITE  
VILLA

|                   |                   |
|-------------------|-------------------|
| 5 - B E D         | S Q M             |
|                   | 6 8 9 . 7 8       |
|                   | S Q F T           |
|                   | 7 , 4 2 4 . 7 3   |
| P L O T   S I Z E |                   |
| S Q M             | 2 , 4 7 5 . 7 1   |
| S Q F T           | 2 6 , 6 4 8 . 3 2 |

Including total indoor & outdoor built up area.



GROUND  
FLOOR



**Disclaimer:** All pictures, plans, layouts, information, data and details included in this brochure are indicative only and may change at any time up to the final 'as built' status in accordance with final designs of the project, regulatory approvals and planning permissions. All accessories and interior finishes such as wallpaper, chandeliers, furniture, electronics, white goods, curtains, hard and soft landscaping, pavements, features, gym, and other elements displayed in the brochure, or between the plot boundary, are not part of the unit and are shown for illustrative purposes only.



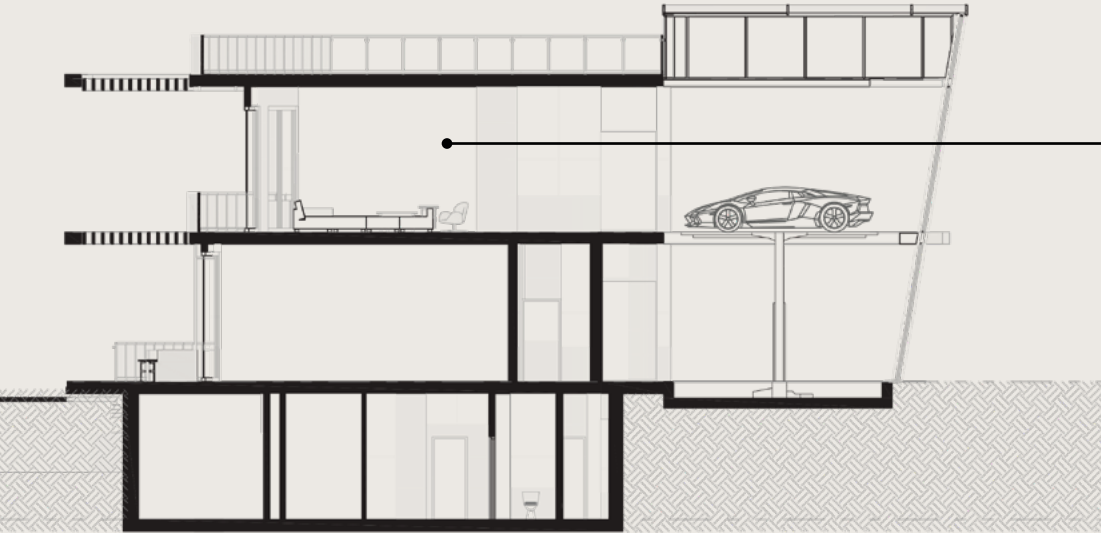
T/ERRA V/VA



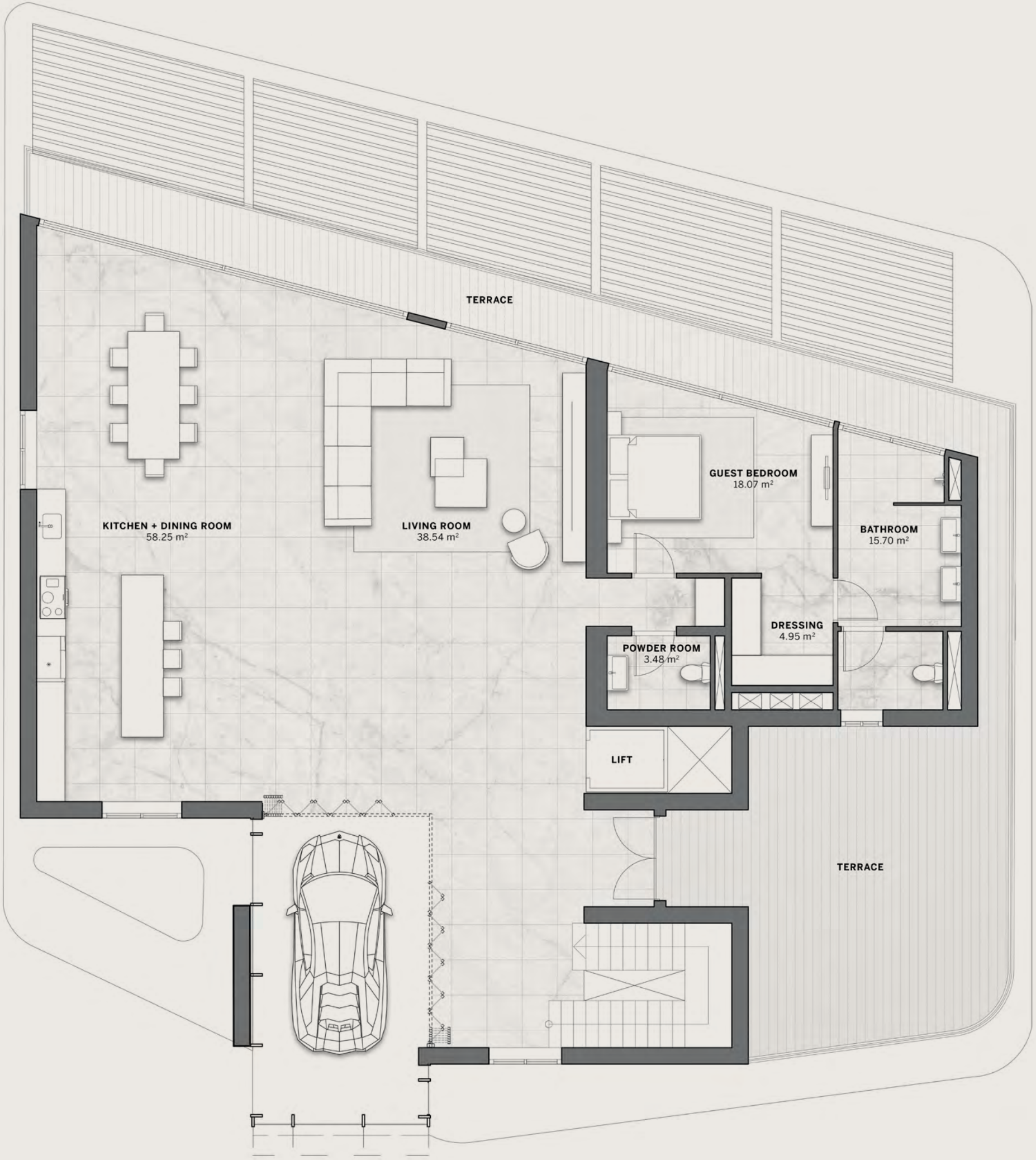
PAINITE  
VILLA

|                   |                   |
|-------------------|-------------------|
| 5 - B E D         | S Q M             |
|                   | 6 8 9 . 7 8       |
|                   | S Q F T           |
|                   | 7 , 4 2 4 . 7 3   |
| P L O T   S I Z E |                   |
| S Q M             | 2 , 4 7 5 . 7 1   |
| S Q F T           | 2 6 , 6 4 8 . 3 2 |

Including total indoor & outdoor built up area.



FIRST  
FLOOR



**Disclaimer:** All pictures, plans, layouts, information, data and details included in this brochure are indicative only and may change at any time up to the final 'as built' status in accordance with final designs of the project, regulatory approvals and planning permissions. All accessories and interior finishes such as wallpaper, chandeliers, furniture, electronics, white goods, curtains, hard and soft landscaping, pavements, features, gym, and other elements displayed in the brochure, or between the plot boundary, are not part of the unit and are shown for illustrative purposes only.

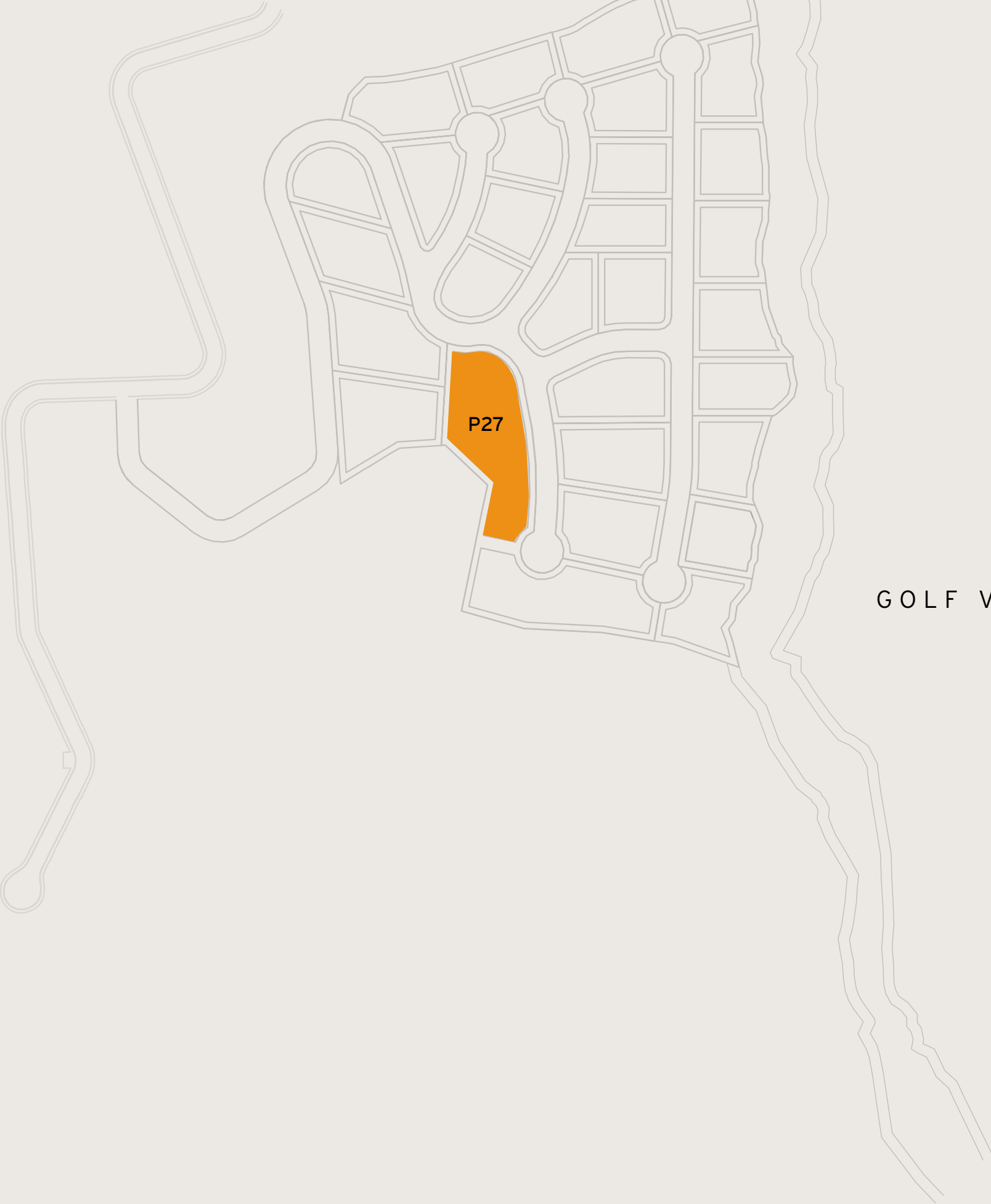




DIAMANTE  
VILLA

|                   |         |                         |  |
|-------------------|---------|-------------------------|--|
| 6 - B E D         | S Q M   | 8 7 1 . 4 5             | <b>Disclaimer:</b> All pictures, plans, layouts, information, data and details included in this brochure are indicative only and may change at any time up to the final 'as built' status in accordance with final designs of the project, regulatory approvals and planning permissions. All accessories and interior finishes such as wallpaper, chandeliers, furniture, electronics, white goods, curtains, hard and soft landscaping, pavements, features, gym, and other elements displayed in the brochure, or between the plot boundary, are not part of the unit and are shown for illustrative purposes only. |
|                   | S Q F T | 9 , 3 8 0 . 2 0         |  |
| P L O T   S I Z E |         | S Q M   2 , 8 8 1 . 2 6 | S Q F T   3 1 , 0 1 3 . 6 2  |

Including total indoor & outdoor built up area.



SEA VIEWS

GOLF VIEWS



DIAMANTE  
VILLA

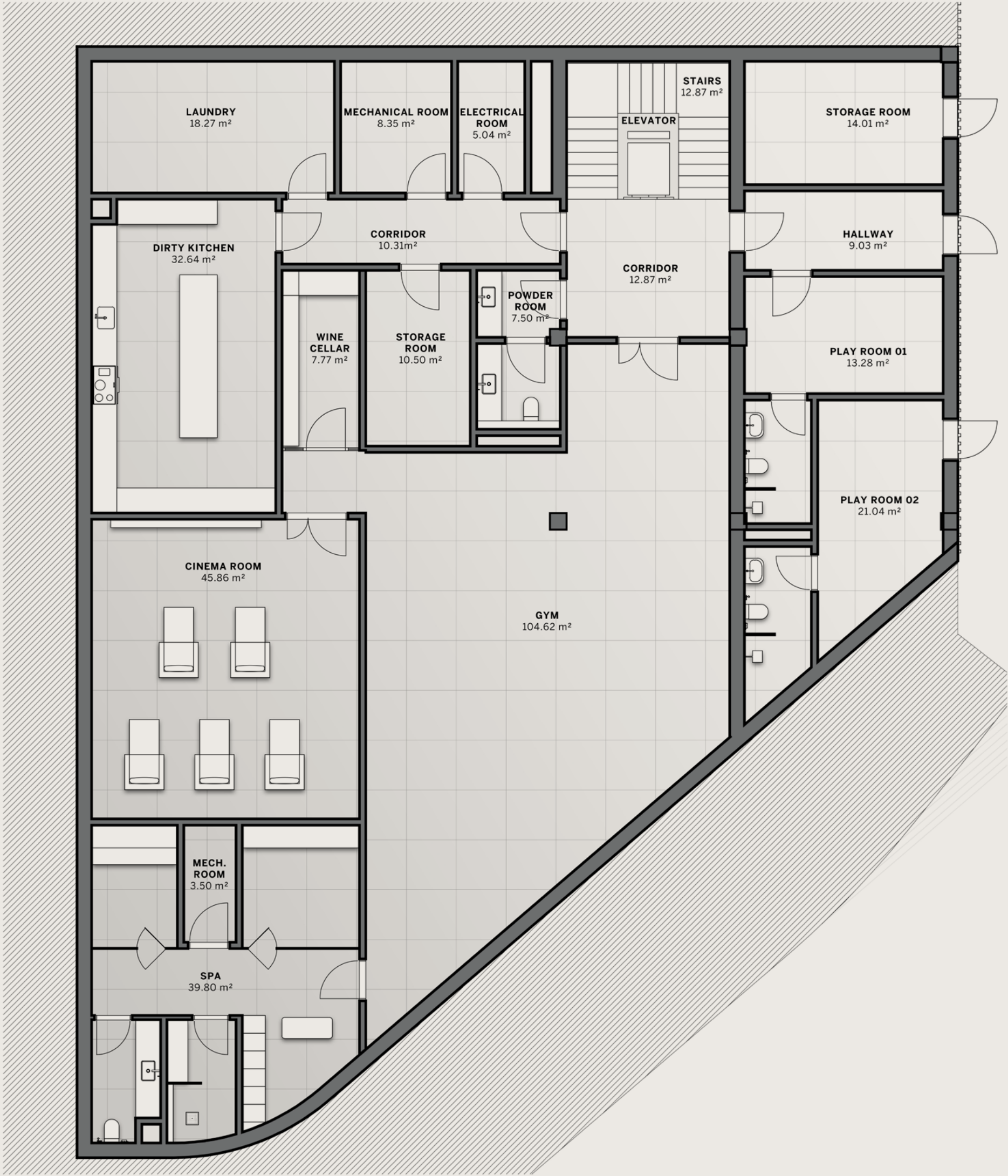
|                   |                   |
|-------------------|-------------------|
| 6 - B E D         | S Q M             |
|                   | 8 7 1 . 4 5       |
|                   | S Q F T           |
|                   | 9 , 3 8 0 . 2 0   |
| P L O T   S I Z E |                   |
| S Q M             | 2 , 8 8 1 . 2 6   |
| S Q F T           | 3 1 , 0 1 3 . 6 2 |

Including total indoor & outdoor built up area.



BASEMENT

**Disclaimer:** All pictures, plans, layouts, information, data and details included in this brochure are indicative only and may change at any time up to the final 'as built' status in accordance with final designs of the project, regulatory approvals and planning permissions. All accessories and interior finishes such as wallpaper, chandeliers, furniture, electronics, white goods, curtains, hard and soft landscaping, pavements, features, gym, and other elements displayed in the brochure, or between the plot boundary, are not part of the unit and are shown for illustrative purposes only.





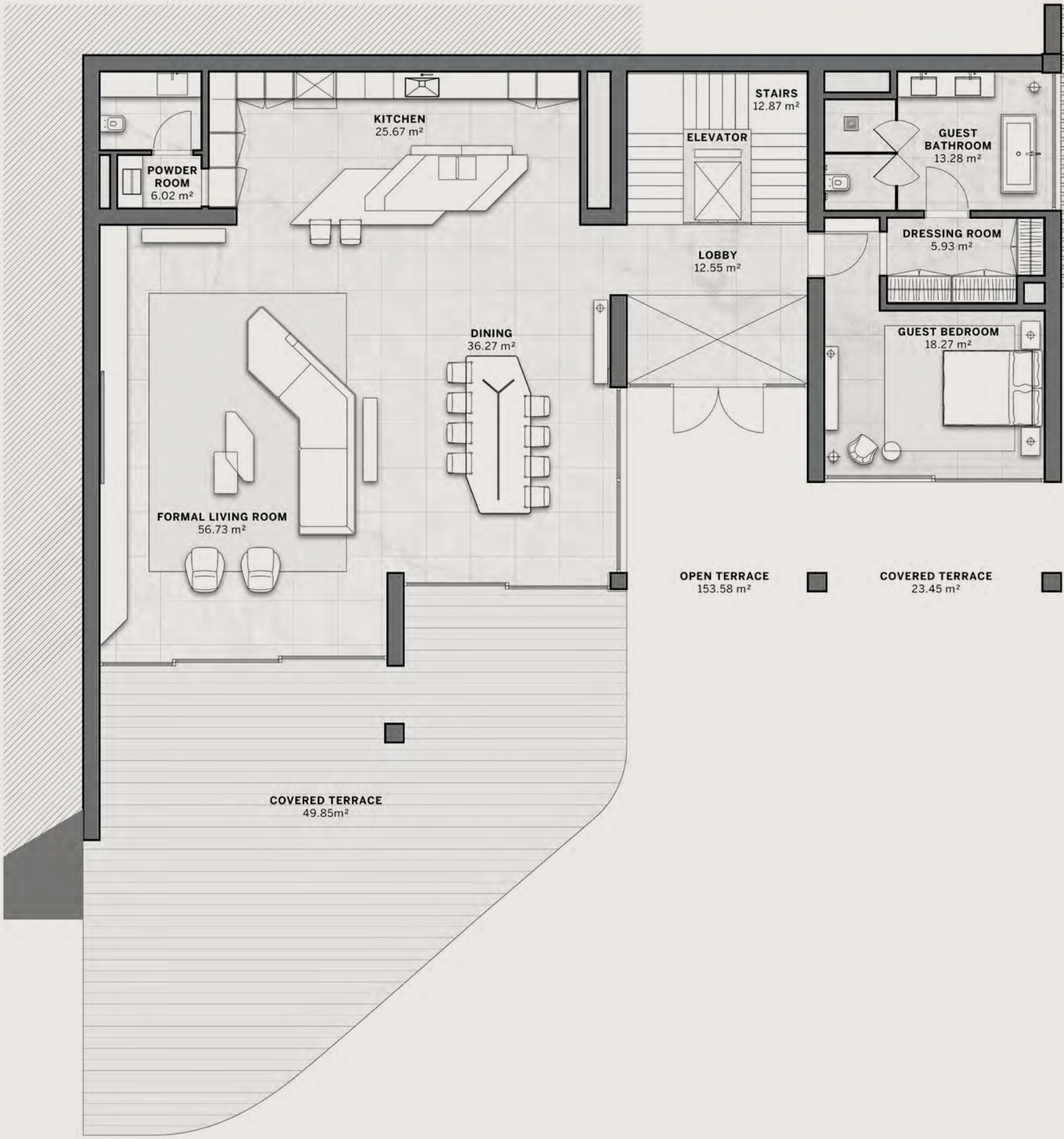
DIAMANTE  
VILLA

|                   |                            |
|-------------------|----------------------------|
| 6 - B E D         | S Q M<br>8 7 1 . 4 5       |
|                   | S Q F T<br>9 , 3 8 0 . 2 0 |
| P L O T   S I Z E |                            |
| S Q M             | 2 , 8 8 1 . 2 6            |
| S Q F T           | 3 1 , 0 1 3 . 6 2          |

Including total indoor & outdoor built up area.



GROUND  
FLOOR



**Disclaimer:** All pictures, plans, layouts, information, data and details included in this brochure are indicative only and may change at any time up to the final 'as built' status in accordance with final designs of the project, regulatory approvals and planning permissions. All accessories and interior finishes such as wallpaper, chandeliers, furniture, electronics, white goods, curtains, hard and soft landscaping, pavements, features, gym, and other elements displayed in the brochure, or between the plot boundary, are not part of the unit and are shown for illustrative purposes only.



DIAMANTE  
VILLA

|                   |                     |
|-------------------|---------------------|
| 6 - B E D         | S Q M<br>871.45     |
|                   | S Q F T<br>9,380.20 |
| P L O T   S I Z E |                     |
| S Q M             | 2,881.26            |
| S Q F T           | 31,013.62           |

Including total indoor & outdoor built up area.



FIRST  
FLOOR



**Disclaimer:** All pictures, plans, layouts, information, data and details included in this brochure are indicative only and may change at any time up to the final 'as built' status in accordance with final designs of the project, regulatory approvals and planning permissions. All accessories and interior finishes such as wallpaper, chandeliers, furniture, electronics, white goods, curtains, hard and soft landscaping, pavements, features, gym, and other elements displayed in the brochure, or between the plot boundary, are not part of the unit and are shown for illustrative purposes only.



DIAMANTE  
VILLA

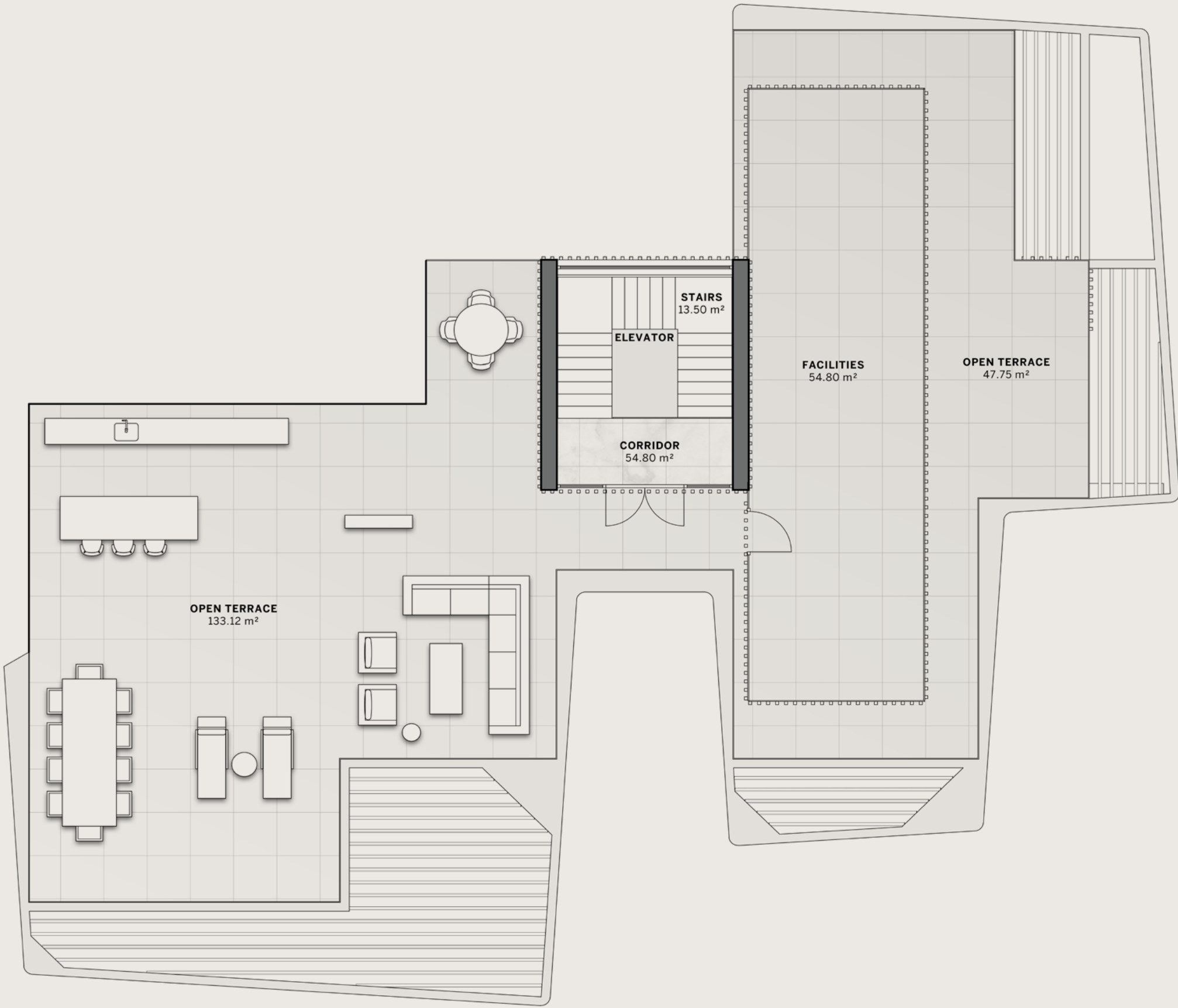
|                   |                     |
|-------------------|---------------------|
| 6 - B E D         | S Q M<br>871.45     |
|                   | S Q F T<br>9,380.20 |
| P L O T   S I Z E |                     |
| S Q M             | 2,881.26            |
| S Q F T           | 31,013.62           |

Including total indoor & outdoor built up area.

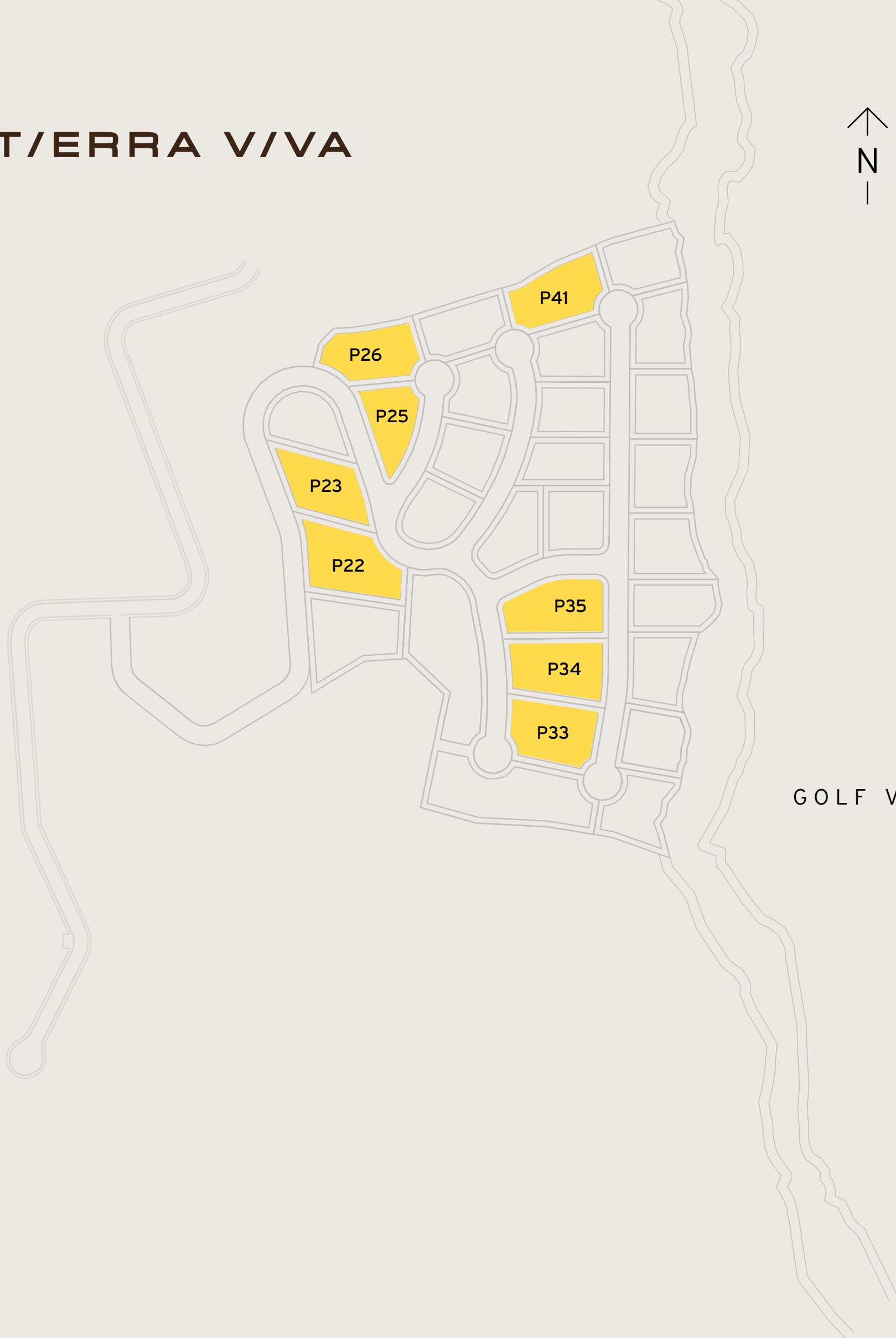


ROOFTOP  
TERRACE

**Disclaimer:** All pictures, plans, layouts, information, data and details included in this brochure are indicative only and may change at any time up to the final 'as built' status in accordance with final designs of the project, regulatory approvals and planning permissions. All accessories and interior finishes such as wallpaper, chandeliers, furniture, electronics, white goods, curtains, hard and soft landscaping, pavements, features, gym, and other elements displayed in the brochure, or between the plot boundary, are not part of the unit and are shown for illustrative purposes only.







GOLF VIEWS

SEA VIEWS

# ZAFIRO VILLA

|           |      |                   |  |
|-----------|------|-------------------|--|
| 5 - B E D | SQM  | 863 - 1,034       | <b>Disclaimer:</b> All pictures, plans, layouts, information, data and details included in this brochure are indicative only and may change at any time up to the final 'as built' status in accordance with final designs of the project, regulatory approvals and planning permissions. All accessories and interior finishes such as wallpaper, chandeliers, furniture, electronics, white goods, curtains, hard and soft landscaping, pavements, features, gym, and other elements displayed in the brochure, or between the plot boundary, are not part of the unit and are shown for illustrative purposes only. |
|           | SQFT | 9,289 - 11,130    |  |
| PLOT SIZE |      | SQM 1,507 - 1,874 | SQFT 16,221 - 20,172   |

Including total indoor & outdoor built up area.





ZAFIRO  
VILLA

|           |                        |
|-----------|------------------------|
| 5 - B E D | SQM<br>863 - 1,034     |
|           | SQFT<br>9,289 - 11,130 |
| PLOT SIZE |                        |
| SQM       | 1,507 - 1,874          |
| SQFT      | 16,221 - 20,172        |

Including total indoor & outdoor built up area.



BASEMENT

**Disclaimer:** All pictures, plans, layouts, information, data and details included in this brochure are indicative only and may change at any time up to the final ‘as built’ status in accordance with final designs of the project, regulatory approvals and planning permissions. All accessories and interior finishes such as wallpaper, chandeliers, furniture, electronics, white goods, curtains, hard and soft landscaping, pavements, features, gym, and other elements displayed in the brochure, or between the plot boundary, are not part of the unit and are shown for illustrative purposes only.





ZAFIRO  
VILLA

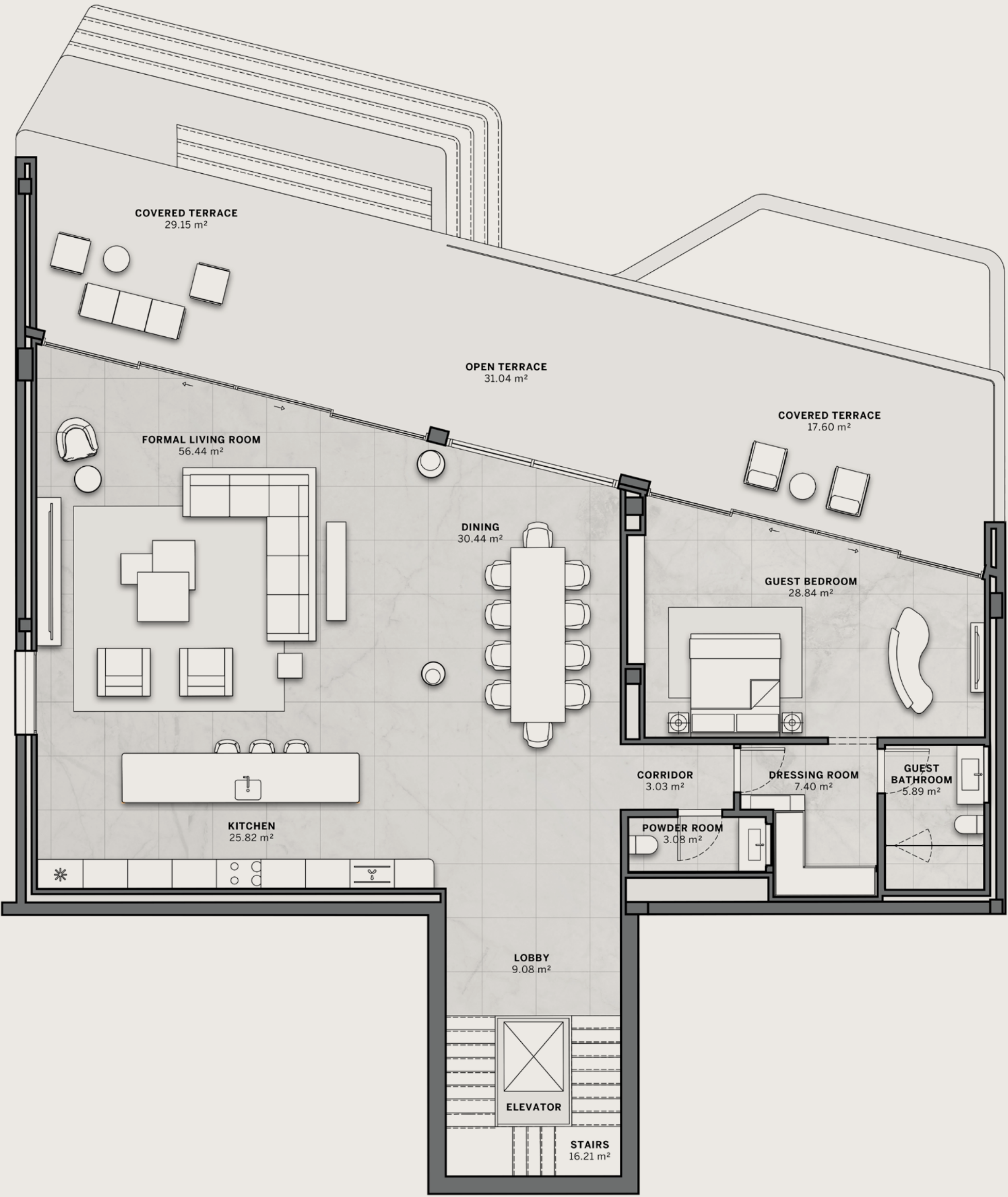
|                          |   |
|--------------------------|---|
| 5 - B E D                | <b>S Q M</b><br>8 6 3 - 1 , 0 3 4         |
|                          | <b>S Q F T</b><br>9 , 2 8 9 - 1 1 , 1 3 0 |
| <b>P L O T   S I Z E</b> |   |
| <b>S Q M</b>             | 1 , 5 0 7 - 1 , 8 7 4                     |
| <b>S Q F T</b>           | 1 6 , 2 2 1 - 2 0 , 1 7 2                 |

Including total indoor & outdoor built up area.



GROUND  
FLOOR

**Disclaimer:** All pictures, plans, layouts, information, data and details included in this brochure are indicative only and may change at any time up to the final 'as built' status in accordance with final designs of the project, regulatory approvals and planning permissions. All accessories and interior finishes such as wallpaper, chandeliers, furniture, electronics, white goods, curtains, hard and soft landscaping, pavements, features, gym, and other elements displayed in the brochure, or between the plot boundary, are not part of the unit and are shown for illustrative purposes only.

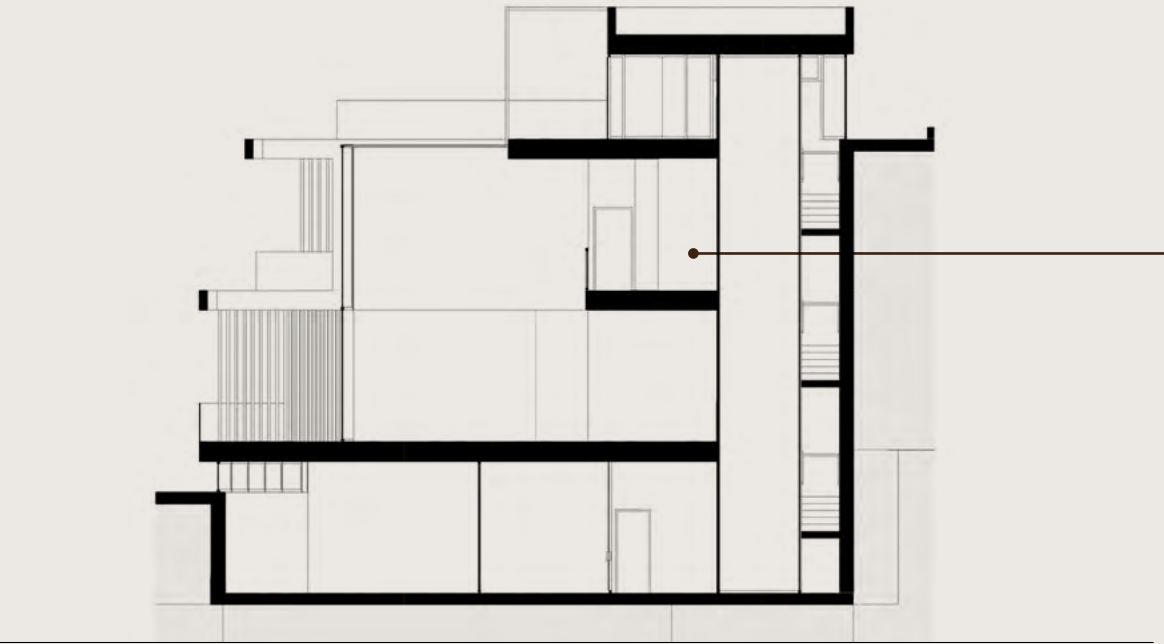




ZAFIRO  
VILLA

|           |                        |
|-----------|------------------------|
| 5 - B E D | SQM<br>863 - 1,034     |
|           | SQFT<br>9,289 - 11,130 |
| PLOT SIZE |                        |
| SQM       | 1,507 - 1,874          |
| SQFT      | 16,221 - 20,172        |

Including total indoor & outdoor built up area.



FIRST  
FLOOR



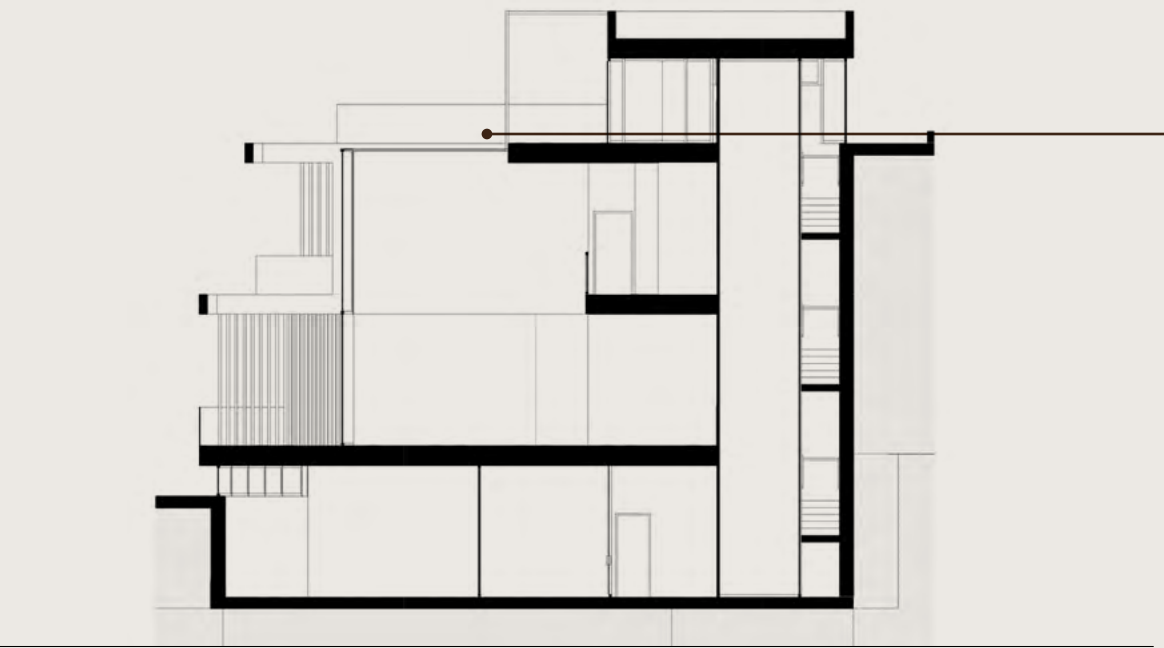
**Disclaimer:** All pictures, plans, layouts, information, data and details included in this brochure are indicative only and may change at any time up to the final 'as built' status in accordance with final designs of the project, regulatory approvals and planning permissions. All accessories and interior finishes such as wallpaper, chandeliers, furniture, electronics, white goods, curtains, hard and soft landscaping, pavements, features, gym, and other elements displayed in the brochure, or between the plot boundary, are not part of the unit and are shown for illustrative purposes only.



ZAFIRO  
VILLA

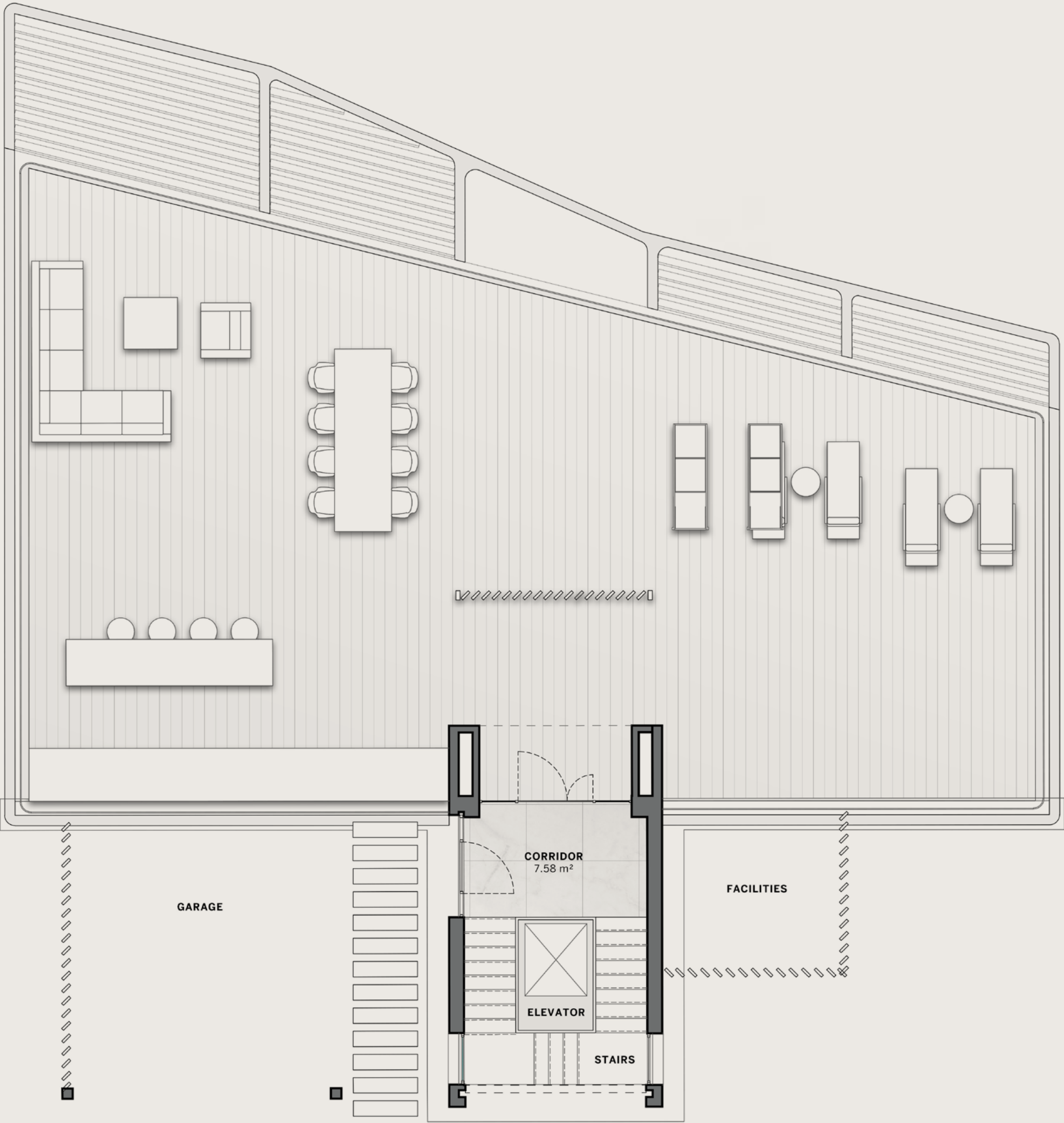
|                          |   |
|--------------------------|---|
| 5 - B E D                | <b>S Q M</b><br>8 6 3 - 1 , 0 3 4         |
|                          | <b>S Q F T</b><br>9 , 2 8 9 - 1 1 , 1 3 0 |
| <b>P L O T   S I Z E</b> |   |
| <b>S Q M</b>             | 1 , 5 0 7 - 1 , 8 7 4                     |
| <b>S Q F T</b>           | 1 6 , 2 2 1 - 2 0 , 1 7 2                 |

Including total indoor & outdoor built up area.

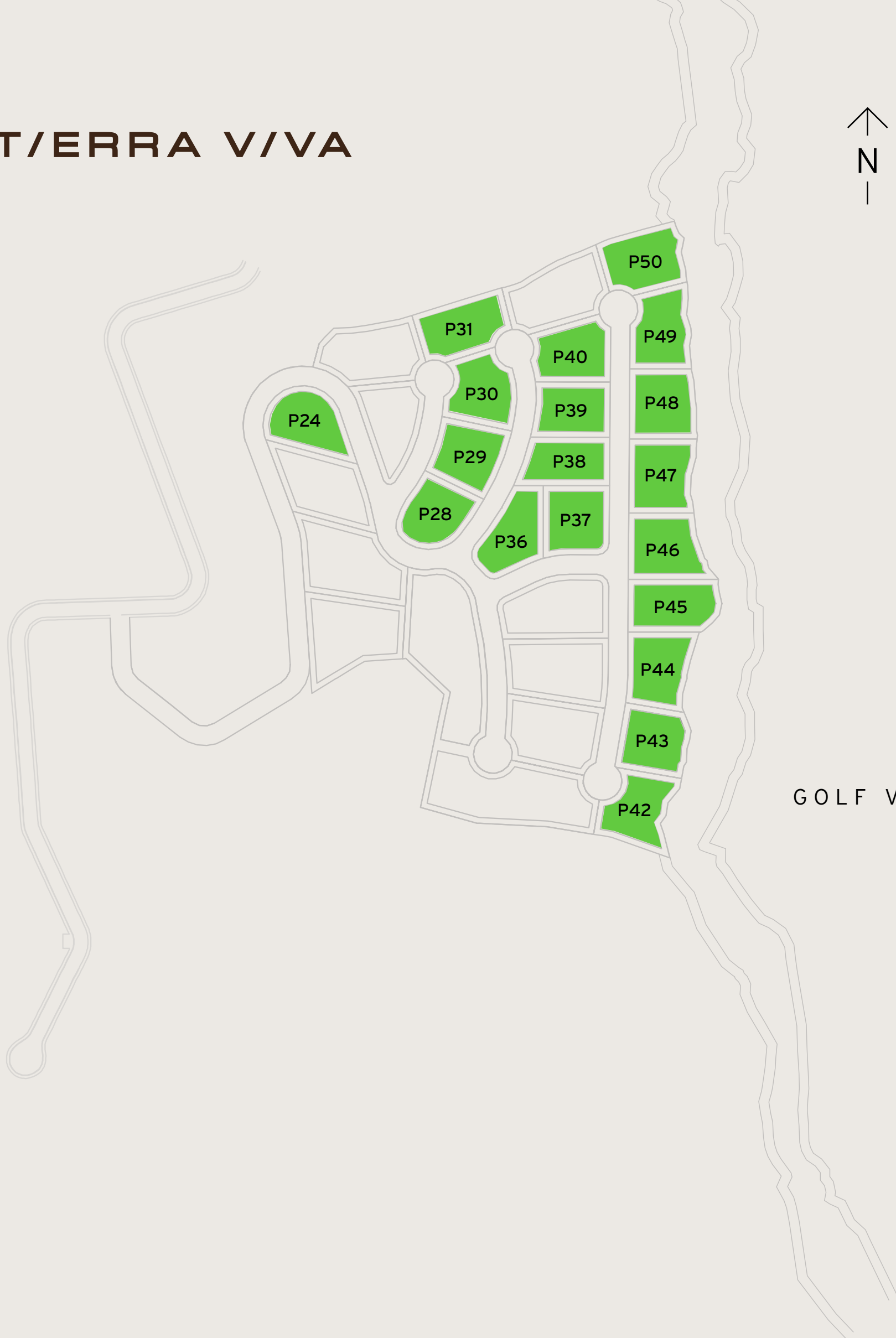


ROOFTOP  
TERRACE

**Disclaimer:** All pictures, plans, layouts, information, data and details included in this brochure are indicative only and may change at any time up to the final 'as built' status in accordance with final designs of the project, regulatory approvals and planning permissions. All accessories and interior finishes such as wallpaper, chandeliers, furniture, electronics, white goods, curtains, hard and soft landscaping, pavements, features, gym, and other elements displayed in the brochure, or between the plot boundary, are not part of the unit and are shown for illustrative purposes only.







SEA VIEWS

GOLF VIEWS

# ESMERALDA VILLA

|           |      |                   |  |
|-----------|------|-------------------|--|
| 4 - B E D | SQM  | 680 - 822         | <b>Disclaimer:</b> All pictures, plans, layouts, information, data and details included in this brochure are indicative only and may change at any time up to the final 'as built' status in accordance with final designs of the project, regulatory approvals and planning permissions. All accessories and interior finishes such as wallpaper, chandeliers, furniture, electronics, white goods, curtains, hard and soft landscaping, pavements, features, gym, and other elements displayed in the brochure, or between the plot boundary, are not part of the unit and are shown for illustrative purposes only. |
|           | SQFT | 7,320 - 8,848     |  |
| PLOT SIZE |      | SQM 1,005 - 2,476 | SQFT 10,818 - 26,651   |

Including total indoor & outdoor built up area.

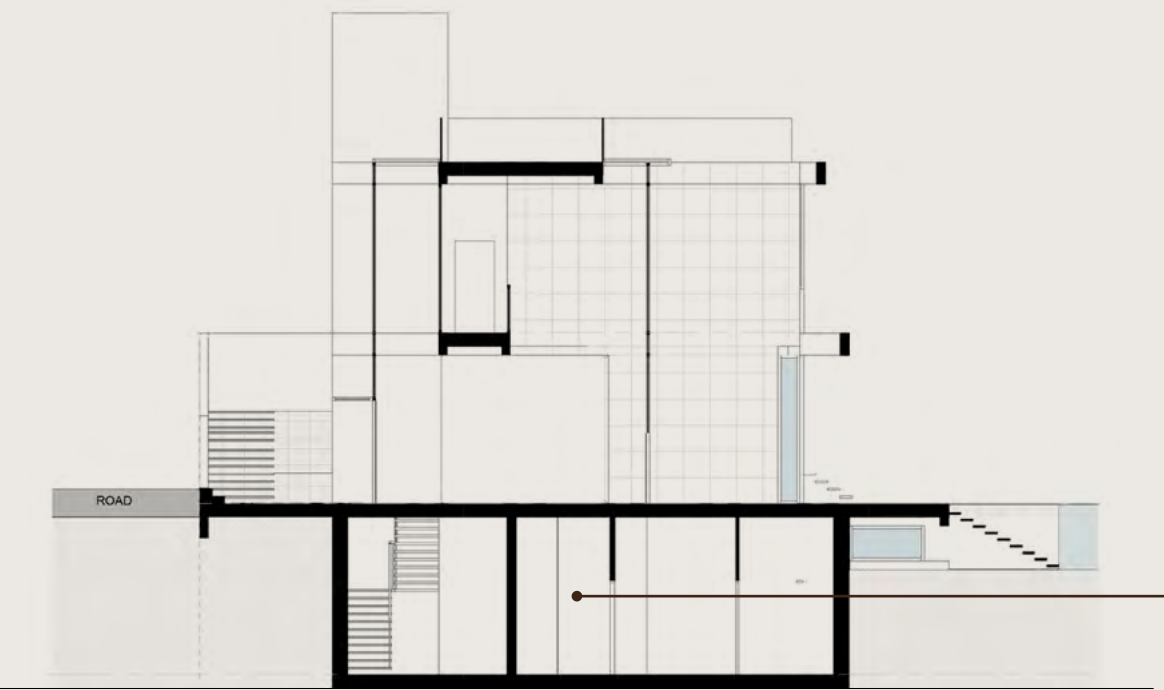




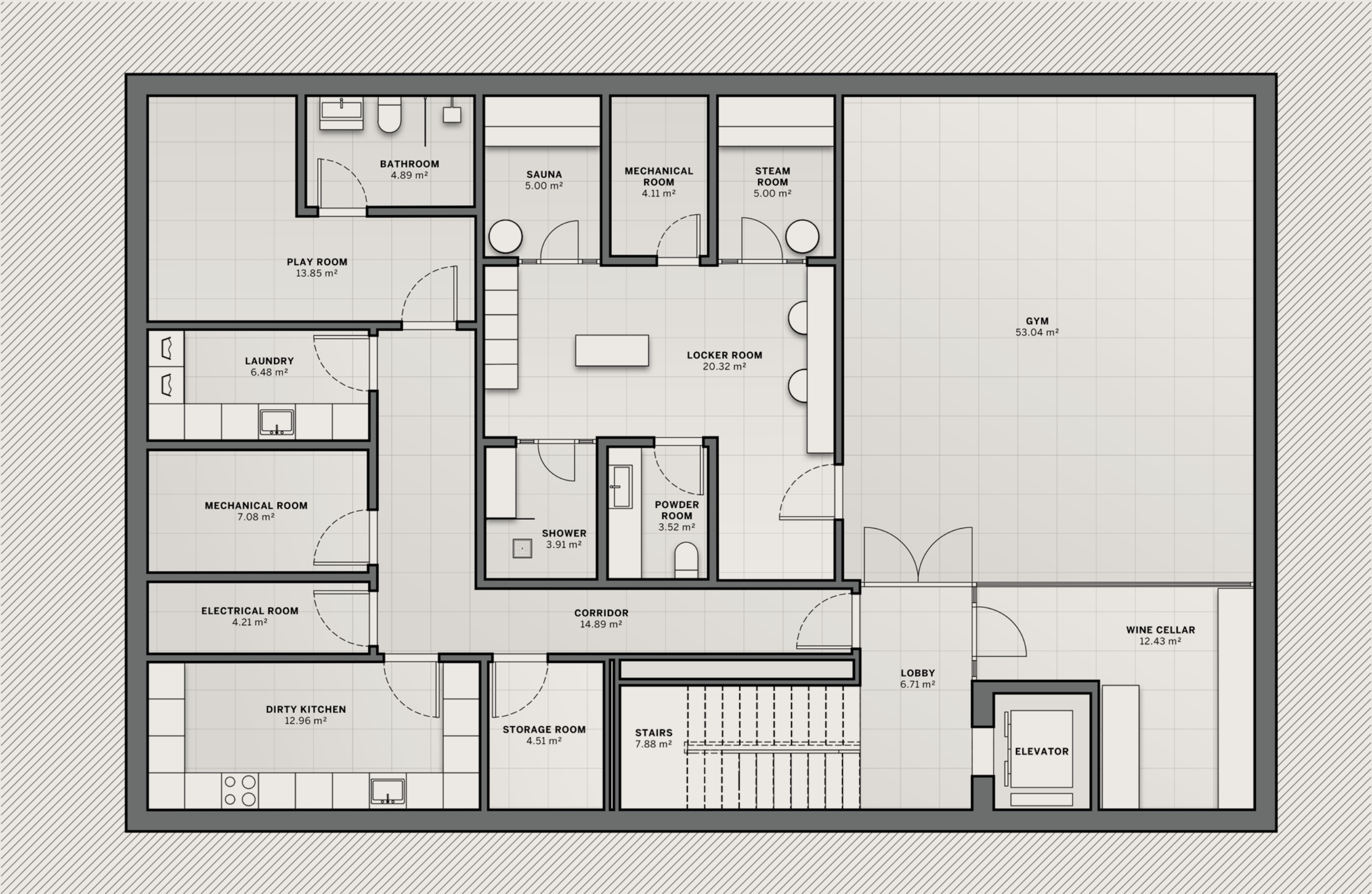
ESMERALDA  
VILLA

|                   |                                  |
|-------------------|----------------------------------|
| 4 - B E D         | S Q M<br>6 8 0 - 8 2 2           |
|                   | S Q F T<br>7 , 3 2 0 - 8 , 8 4 8 |
| P L O T   S I Z E |                                  |
| S Q M             | 1 , 0 0 5 - 2 , 4 7 6            |
| S Q F T           | 1 0 , 8 1 8 - 2 6 , 6 5 1        |

Including total indoor & outdoor built up area.



BASEMENT



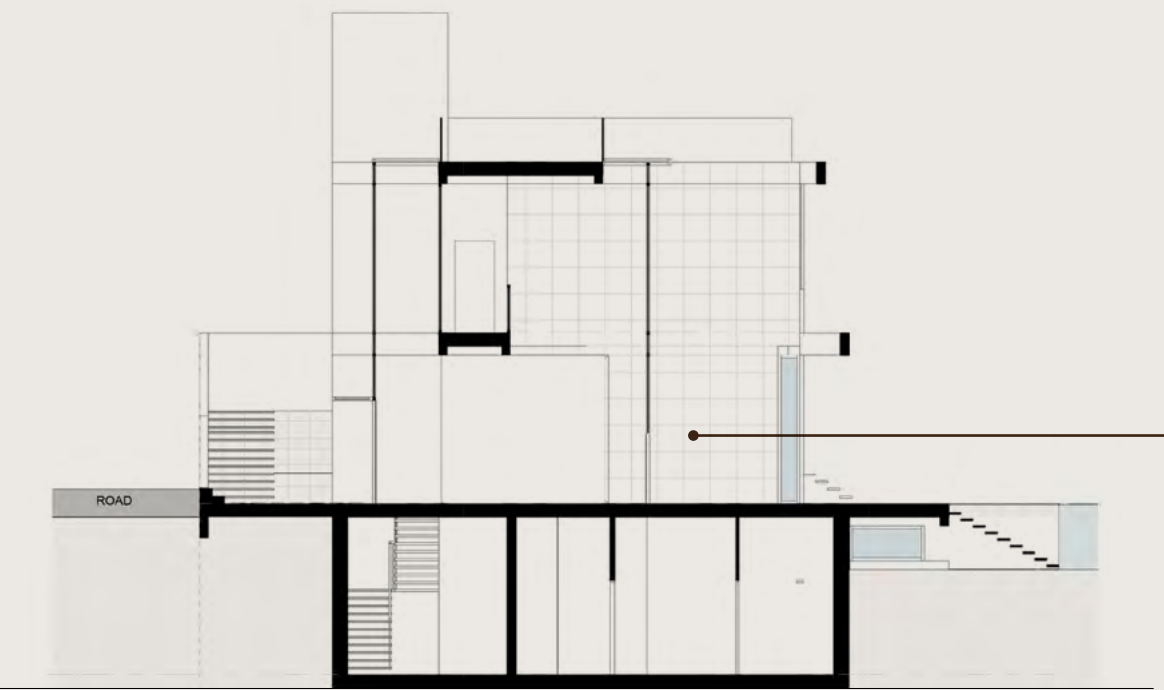
**Disclaimer:** All pictures, plans, layouts, information, data and details included in this brochure are indicative only and may change at any time up to the final 'as built' status in accordance with final designs of the project, regulatory approvals and planning permissions. All accessories and interior finishes such as wallpaper, chandeliers, furniture, electronics, white goods, curtains, hard and soft landscaping, pavements, features, gym, and other elements displayed in the brochure, or between the plot boundary, are not part of the unit and are shown for illustrative purposes only.



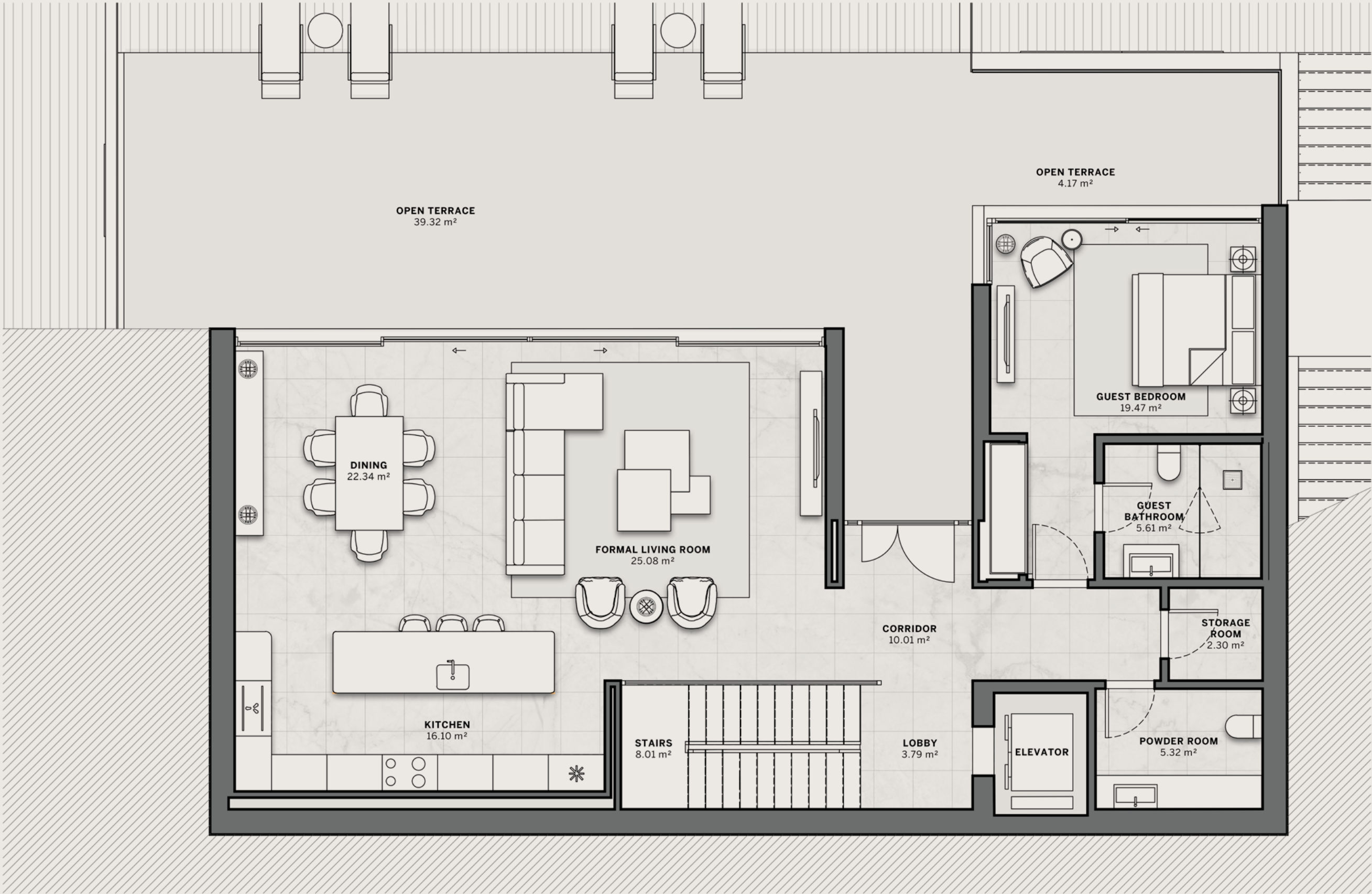
ESMERALDA  
VILLA

|                   |                                  |
|-------------------|----------------------------------|
| 4 - B E D         | S Q M<br>6 8 0 - 8 2 2           |
|                   | S Q F T<br>7 , 3 2 0 - 8 , 8 4 8 |
| P L O T   S I Z E |                                  |
| S Q M             | 1 , 0 0 5 - 2 , 4 7 6            |
| S Q F T           | 1 0 , 8 1 8 - 2 6 , 6 5 1        |

Including total indoor & outdoor built up area.



GROUND  
FLOOR



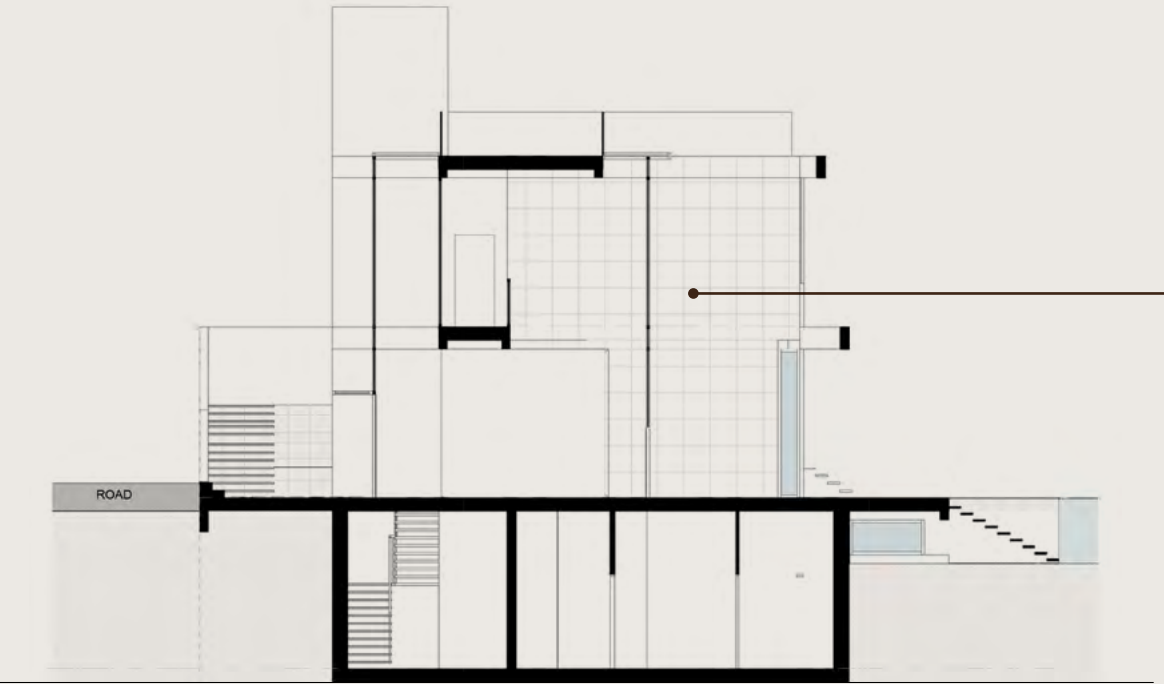
**Disclaimer:** All pictures, plans, layouts, information, data and details included in this brochure are indicative only and may change at any time up to the final 'as built' status in accordance with final designs of the project, regulatory approvals and planning permissions. All accessories and interior finishes such as wallpaper, chandeliers, furniture, electronics, white goods, curtains, hard and soft landscaping, pavements, features, gym, and other elements displayed in the brochure, or between the plot boundary, are not part of the unit and are shown for illustrative purposes only.



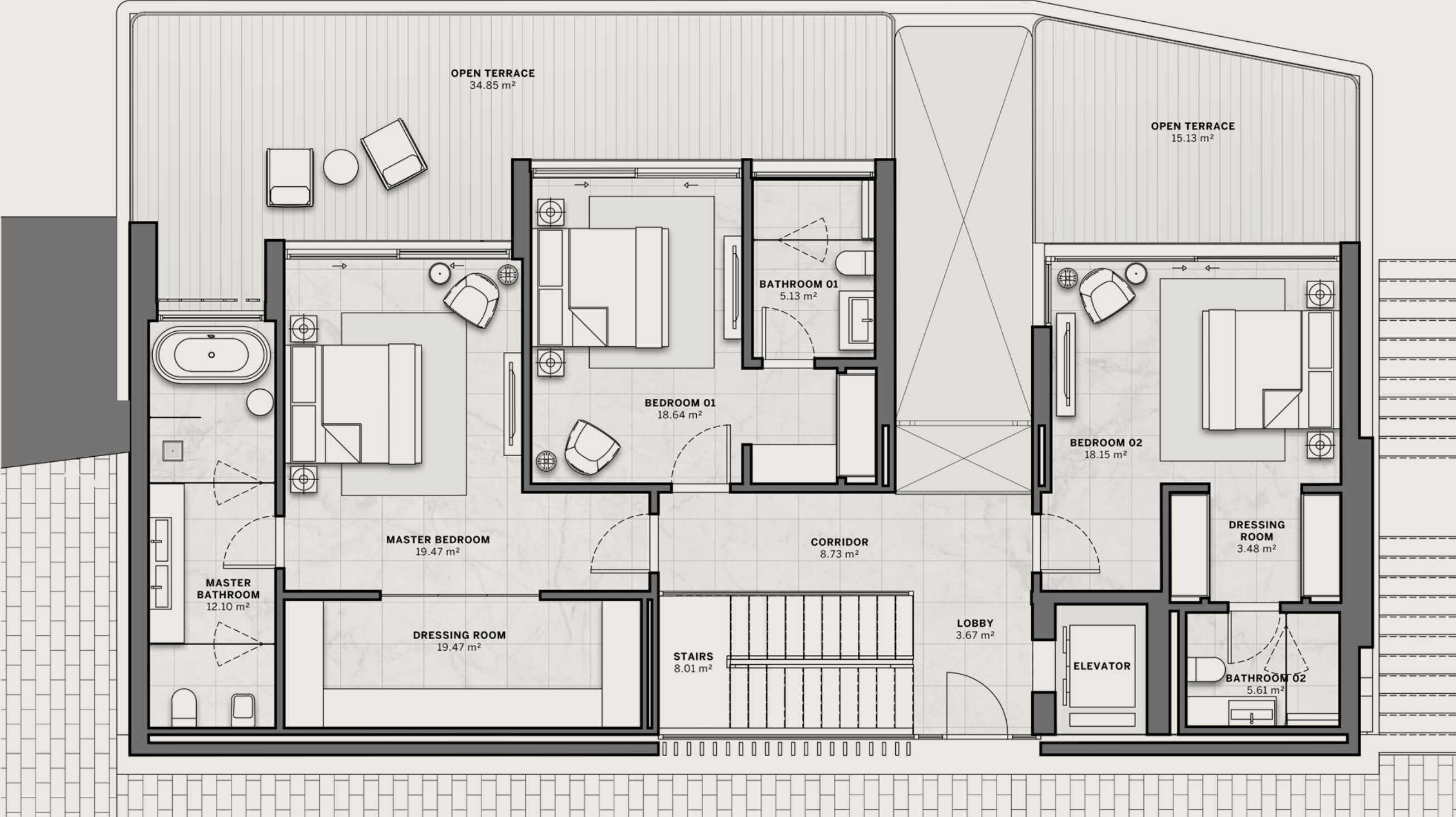
ESMERALDA  
VILLA

|                          |   |
|--------------------------|---|
| 4 - B E D                | <b>S Q M</b><br>6 8 0 - 8 2 2           |
|                          | <b>S Q F T</b><br>7 , 3 2 0 - 8 , 8 4 8 |
| <b>P L O T   S I Z E</b> |   |
| <b>S Q M</b>             | 1 , 0 0 5 - 2 , 4 7 6                   |
| <b>S Q F T</b>           | 1 0 , 8 1 8 - 2 6 , 6 5 1               |

Including total indoor & outdoor built up area.



FIRST  
FLOOR



**Disclaimer:** All pictures, plans, layouts, information, data and details included in this brochure are indicative only and may change at any time up to the final 'as built' status in accordance with final designs of the project, regulatory approvals and planning permissions. All accessories and interior finishes such as wallpaper, chandeliers, furniture, electronics, white goods, curtains, hard and soft landscaping, pavements, features, gym, and other elements displayed in the brochure, or between the plot boundary, are not part of the unit and are shown for illustrative purposes only.



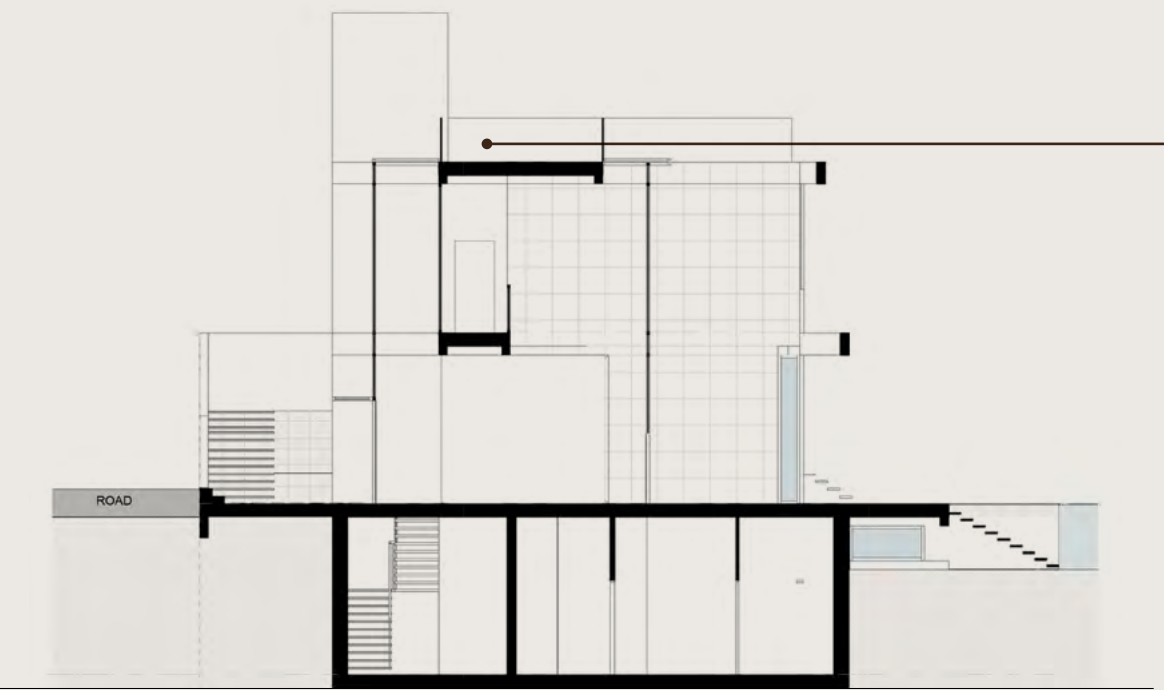
T/ERRA V/VA



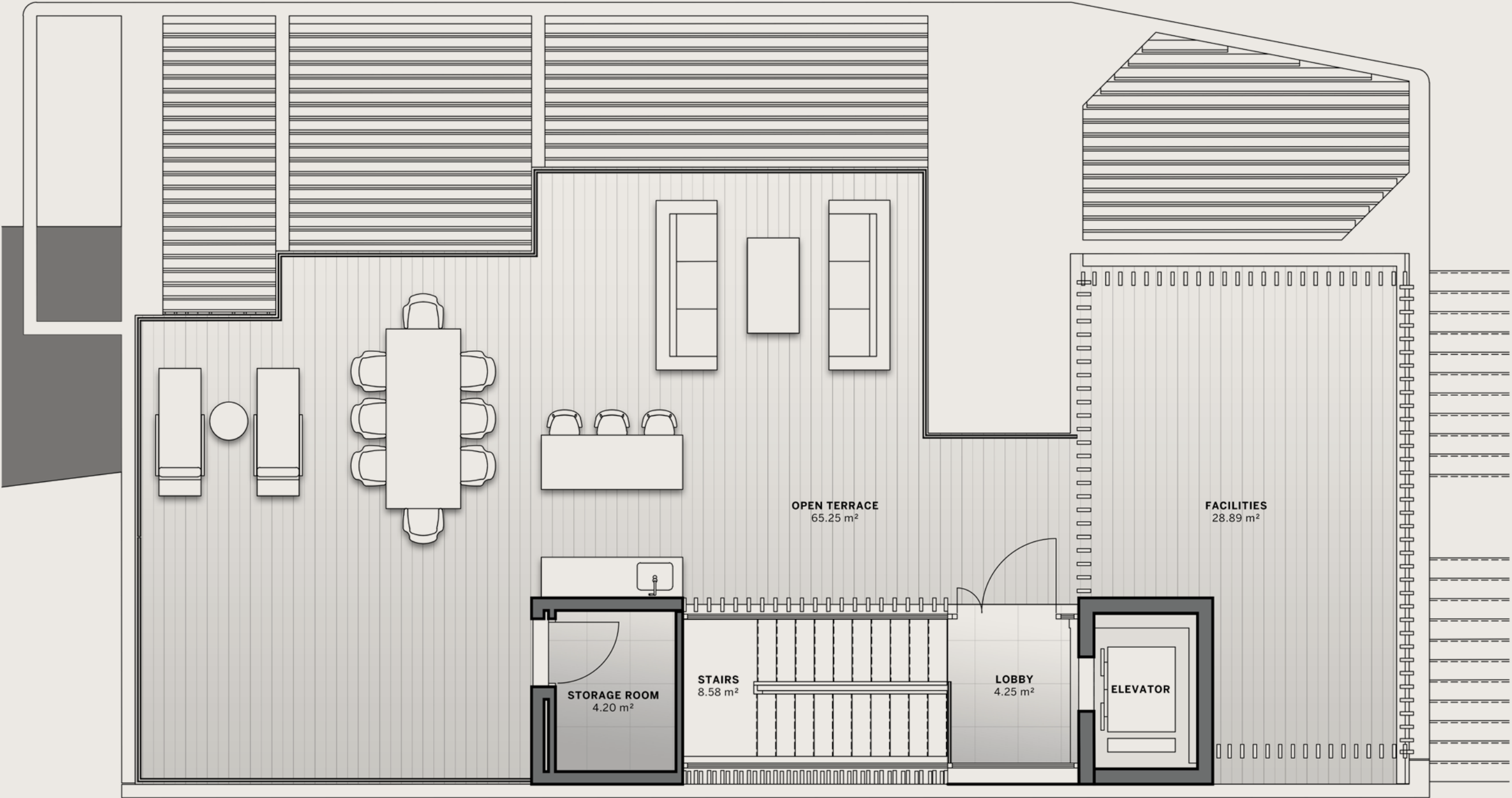
ESMERALDA  
VILLA

|                          |   |
|--------------------------|---|
| 4 - B E D                | <b>S Q M</b><br>6 8 0 - 8 2 2           |
|                          | <b>S Q F T</b><br>7 , 3 2 0 - 8 , 8 4 8 |
| <b>P L O T   S I Z E</b> |   |
| <b>S Q M</b>             | 1 , 0 0 5 - 2 , 4 7 6                   |
| <b>S Q F T</b>           | 1 0 , 8 1 8 - 2 6 , 6 5 1               |

Including total indoor & outdoor built up area.



ROOFTOP  
TERRACE



**Disclaimer:** All pictures, plans, layouts, information, data and details included in this brochure are indicative only and may change at any time up to the final 'as built' status in accordance with final designs of the project, regulatory approvals and planning permissions. All accessories and interior finishes such as wallpaper, chandeliers, furniture, electronics, white goods, curtains, hard and soft landscaping, pavements, features, gym, and other elements displayed in the brochure, or between the plot boundary, are not part of the unit and are shown for illustrative purposes only.



## Automobili Lamborghini S.p.A.

Founded in 1963, Automobili Lamborghini is headquartered in Sant'Agata Bolognese, in the province of Bologna, and produces some of the most desirable super sports cars in the world. Still rooted in its historic headquarters in the heart of Motorvalley, Lamborghini is synonymous with the highest technological expertise in the design and production of engines with extraordinary performance. The design of each model has always been unique: the language of forms is visionary and ahead of its time.

Brave, unexpected and authentic: the three values of the Sant'Agata Bolognese brand are reflected in the three models in the range, the V8 engine with Super SUV Urus, the perfect combination of power, performance, comfort and driving versatility and two super sports cars with naturally aspirated V10 and V12 engines, the Huracán and the Aventador successor, the newborn Revuelto, the starting point to the "Direzione Cor Tauri", the hybridization and electrification of the whole Lamborghini range.

Automobili Lamborghini is today a global company with a balanced presence in the three macro-regions America, Europe/ Middle-East/Africa and Asia Pacific. Based on record commercial and financial results and in constant growth and with the support and passion of over 2,000 employees, Lamborghini is now aiming for an increasingly sustainable future, up to the introduction of a fourth model full electric, while still fully respecting the values and DNA of the brand.







DarGlobal PLC is an international real estate developer specializing in exclusive luxury developments across the world's most coveted cosmopolitan cities.

Catering to global citizens seeking prime investments, second homes, and luxury living, DarGlobal transforms real estate into economic catalysts, unlocking opportunities for both investors and the countries it enters.

DarGlobal has partnered with over 10 world-renowned luxury brands, including Trump Organization, Aston Martin, Automobili Lamborghini, ELIE SAAB, Marriott Residences, Missoni, Mouawad, Pagani Automobili, W Hotels, and Versace. These collaborations offer unique investment opportunities in global cities, providing both wealth growth and protection.

Listed on the London Stock Exchange, DarGlobal goes beyond property development, it drives economic transformation by attracting international clients and Foreign Direct Investment (FDI). By injecting capital, confidence, and industry expertise, DarGlobal enhances local infrastructure while elevating the global appeal of each destination.

With a presence in 14 international cities across 7 countries, DarGlobal's portfolio spans the United Kingdom, Spain, Maldives, Saudi Arabia, the UAE, Oman, and Qatar. The company is also expanding into world-class hospitality, developing luxury hotels in Dubai, the Maldives, and Oman.

To support its international clientele, DarGlobal has sales and customer service offices in New York, London, Marbella, Athens, Dubai, Jeddah, Riyadh, Muscat, and Doha.



**LONDON  
STOCK  
EXCHANGE**





## OUR OFFICES

### DUBAI, UAE

Jumeirah Emirates Towers  
30th Floor, Sheikh Zayed Road,  
PO Box 2523, Dubai, UAE  
+971 4 562 9616

### LONDON, UK

50 Hans Crescent,  
Knightsbridge, London,  
SW1X 0NA, UK  
+44 20 8135 4699

### MARBELLA, SPAIN

Marbella Club Golden Mile,  
Av. Bulevar Principe Alfonso de  
Hohenlohe, Marbella 29602  
Málaga, Spain  
+34 951 121 221

### MUSCAT, OMAN

Royal Opera House Muscat  
Shatti Al Qurum,  
Muscat, Oman  
+968 2270 2771

### RIYADH, KSA

2135 Tahlia St.,  
Al Olaya, 12222  
Riyadh, KSA  
+966 800 118 8081

### JEDDAH, KSA

Ash Shati, 23613,  
King Abdulaziz Road,  
Jeddah, KSA  
+966 800 118 8081

### DOHA, QATAR

Malibu Building,  
Lusail Entertainment City,  
Doha, Qatar  
+974 4410 8282

### NEW YORK CITY, USA

19th floor - Trump Tower  
New York, 725 5th Ave,  
NY 10022, USA  
+1 212 715 1067

### ATHENS, GREECE

7 Merlin Street,  
10671, Attica,  
Athens, Greece

For more information on DarGlobal  
please call +971 4 562 9616 (UAE)

You can visit our website at [darglobal.co.uk](http://darglobal.co.uk)  
or via our social media platforms



# T/ERRA V/VA



**DARGLOBAL.CO.UK**

Dar Al Arkan Spain S.L. shall at all times comply with the requirements established in Law 38/1999, of 5 November, on Building Regulation in relation to the receipt of sums on account prior to the commencement of the works or during the construction period, depositing such sums in a special account set up for this purpose and insuring such sums by means of a joint and several guarantee or surety insurance.