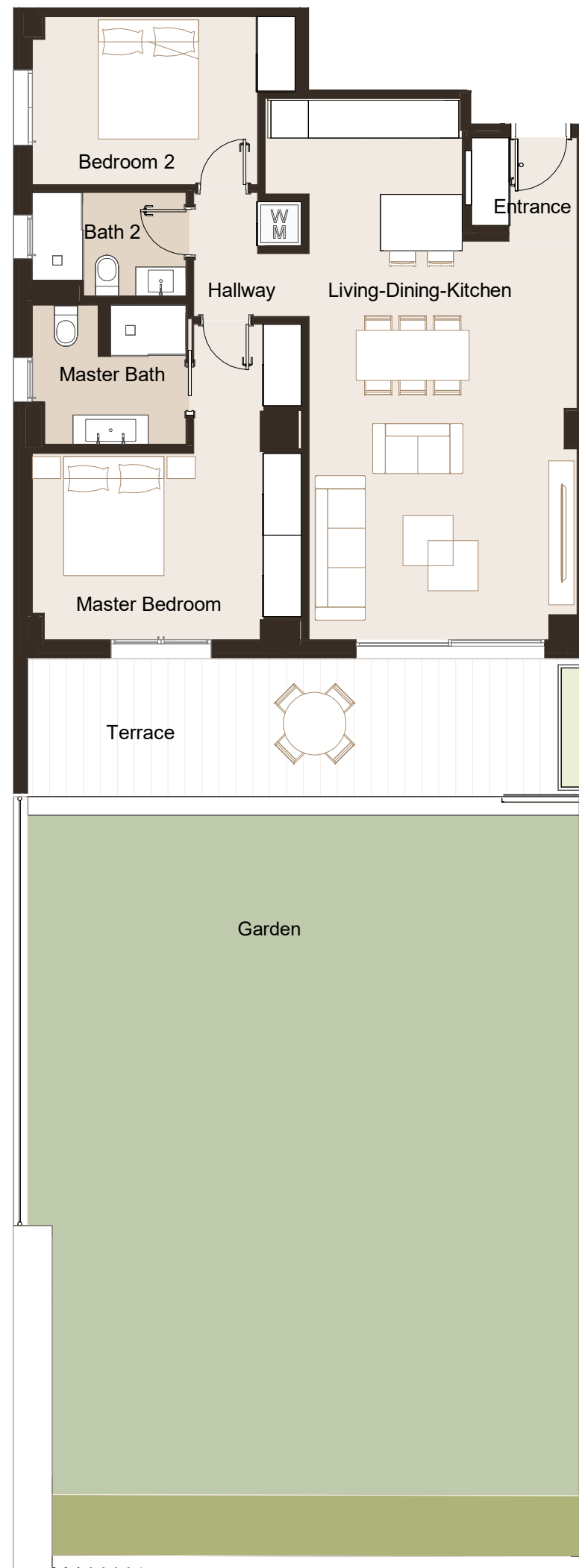




Ground Floor



LIFESTYLE APARTMENTS
IBIZA

GROSS SURFACE AREA VT14 - AGUA-0.04	
Name	GA(m ²)
Entrance	4.78 m ²
Living-Dining-Kitchen	37.71 m ²
Master Bedroom	18.78 m ²
Bedroom 2	13.15 m ²
Master Bath	6.69 m ²
Bath 2	4.63 m ²
Hallway	2.91 m ²
Terrace	20.11 m ²
	108.77 m ²
Garden	109.56 m ²
	109.56 m ²

AGUA-0.04

TYPOLOGY
VT14

BEDROOMS
2 BR

REV
R00

DATE
26/07/2023

ADRESS

Avenida Pere Matutes 66. Platja d'en Bossa.
07800 Ibiza, Islas Baleares

PROMOTER

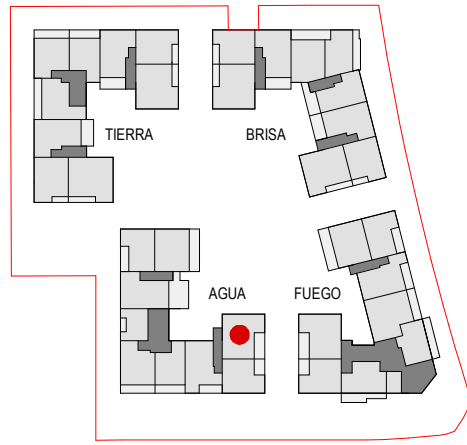
DOMUS VIVENDI CREO
GmbH & Co KG, Sucursal en España

The Circle - Carrer Illes Canàries 18
Polígono Industrial Son Bugadelles
07183 Santa Ponsa - Calvià
España - Baleares

DOMUSVIVENDI
GROUP

*the plans only contain examples for furnishings. the plans are a draft status and are subject to change. structural optimization will be added to the plan in future.
*all the brown drawings (like furniture) are not included on the project.





Ground Floor



LIFESTYLE APARTMENTS
IBIZA

GROSS SURFACE AREA VT27 - AGUA-12-00-B	
Name	GA(m ²)
Entrance	9.11 m ²
Living-Dining-Kitchen	50.41 m ²
Master Bedroom	19.74 m ²
Bedroom 2	15.82 m ²
Master Bath	8.25 m ²
Bath 2	4.09 m ²
Hallway	14.86 m ²
Terrace	9.65 m ²
	131.93 m²
Garden	51.24 m ²
	51.24 m²

AGUA-0.08

TPOLOGY
VT27

BEDROOMS
3 BR

REV
R00

DATE
08/05/23

ADDRESS

Avenida Pere Matutes 66. Platja d'en Bossa.
07800 Ibiza, Islas Baleares

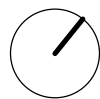
PROMOTER

DOMUS VIVENDI CREO
GmbH & Co KG, Sucursal en España

The Circle - Carrer Illes Canàries 18
Polígono Industrial Son Bugadelles
07183 Santa Ponsa - Calvià
España - Baleares

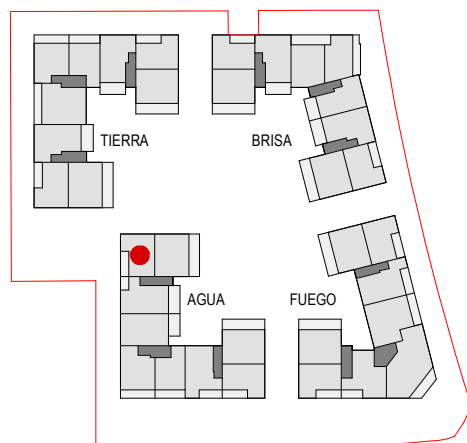
**DOMUSVIVENDI
GROUP**

*the plans only contain examples for furnishings. the plans are a draft status and are subject to change. structural optimization will be added to the plan in future.
*all the brown drawings (like furniture) are not included on the project.

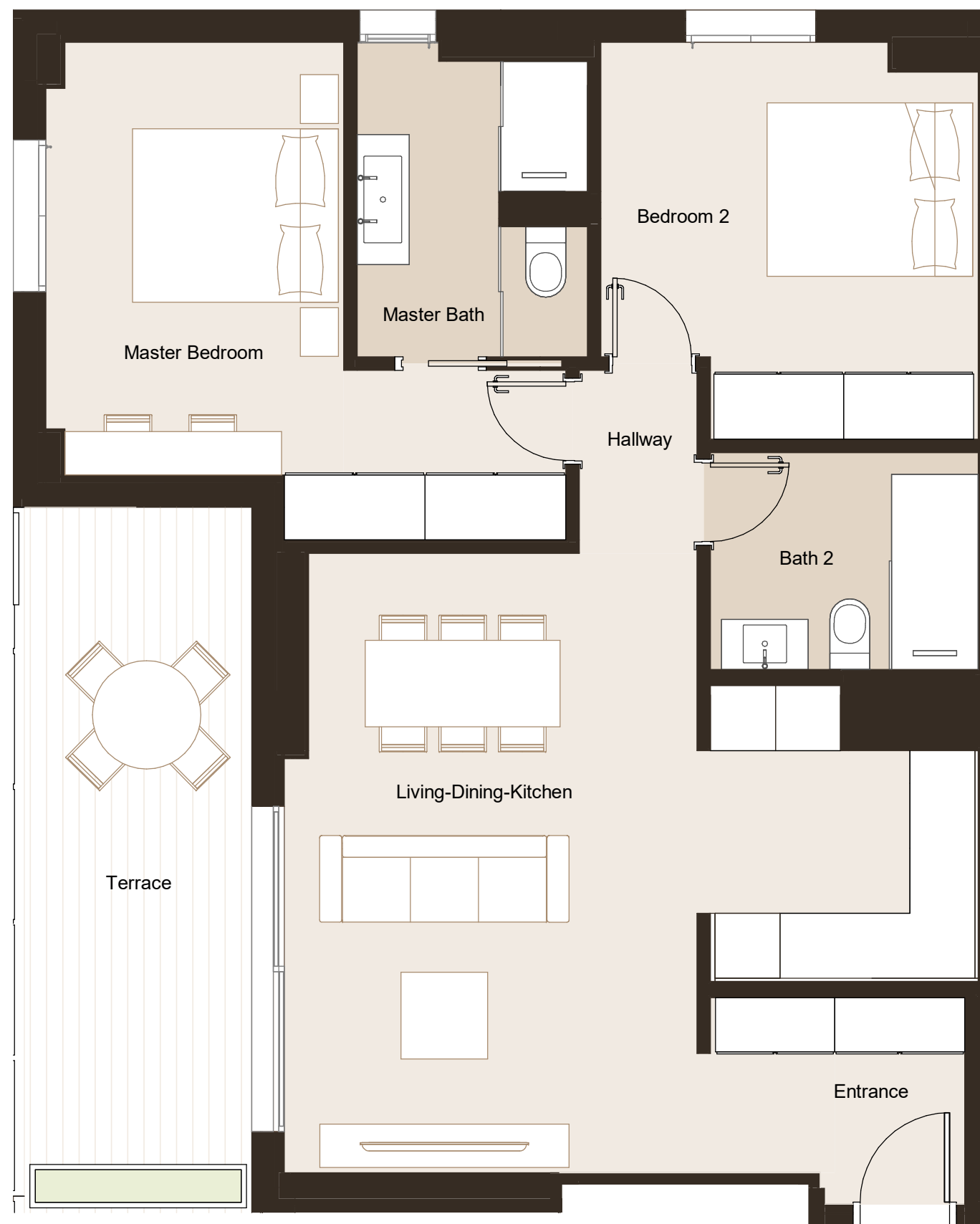




LIFESTYLE APARTMENTS
IBIZA



1st Floor



GROSS SURFACE AREA VT04	
Name	GA(m ²)
Entrance	5.79 m ²
Living-Dining-Kitchen	33.89 m ²
Master Bedroom	18.08 m ²
Bedroom 2	14.07 m ²
Master Bath	7.34 m ²
Bath 2	5.72 m ²
Hallway	2.12 m ²
Terrace	13.81 m ²
GROSS TOTAL AREA	100.82 m²

AGUA-1.03

TPOLOGY
VT04.S

BEDROOMS	REV	DATE
2 BR	R00	08/05/23

ADDRESS

Av. Pere Matutes Noguera 66
07800 Ibiza, Islas Baleares

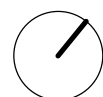
PROMOTER

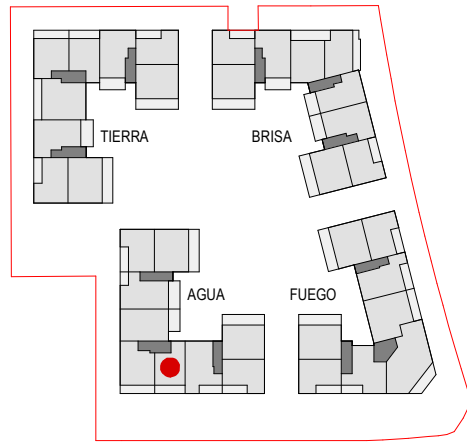
DOMUS VIVENDI CREO
GmbH & Co KG, Sucursal en España

The Circle - Carrer Illes Canàries 18
Polígono Industrial Son Bugadelles
07183 Santa Ponsa - Calvià
Espanya - Baleares

DOMUSVIVENDI
GROUP

*the plans only contain examples for furnishings. the plans are a draft status and are subject to change. structural optimization will be added to the plan in future.
*all the brown drawings (like furniture) are not included on the project.





1st Floor



LIFESTYLE APARTMENTS
IBIZA

GROSS SURFACE AREA VT13	
Name	GA(m ²)
Entrance	3.90 m ²
Living-Dining-Kitchen	34.13 m ²
Master Bedroom	14.37 m ²
Bedroom 2	13.40 m ²
Master Bath	5.12 m ²
Bath 2	4.93 m ²
Hallway	6.17 m ²
Terrace	17.58 m ²
GROSS TOTAL AREA	99.59 m²

AGUA-1.05

TYPOLOGY
VT13

BEDROOMS	REV	DATE
2 BR	R00	08/05/23

ADDRESS

Av. Pere Matutes Noguera 66
07800 Ibiza, Islas Baleares

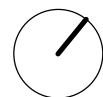
PROMOTER

DOMUS VIVENDI CREO
GmbH & Co KG, Sucursal en España

The Circle - Carrer Illes Canàries 18
Polígono Industrial Son Bugadelles
07183 Santa Ponsa - Calvià
España - Baleares

DOMUSVIVENDI
GROUP

*the plans only contain examples for furnishings. the plans are a draft status and are subject to change. structural optimization will be added to the plan in future.
*all the brown drawings (like furniture) are not included on the project.





1st Floor



LIFESTYLE APARTMENTS
IBIZA

GROSS SURFACE AREA VT16	
Name	GA(m ²)
Living-Dining-Kitchen	48.38 m ²
Master Bedroom	21.80 m ²
Bedroom 2	18.51 m ²
Master Bath	6.87 m ²
Bath 2	5.75 m ²
Hallway	5.75 m ²
WC	3.34 m ²
Laundry	5.61 m ²
Terrace	17.67 m ²
GROSS TOTAL AREA	133.67 m²

AGUA-1.06

TYPOLOGY
VT16

BEDROOMS
2 BR

REV
R00

DATE
08/05/23

ADDRESS

Av. Pere Matutes Noguera 66
07800 Ibiza, Islas Baleares

PROMOTER

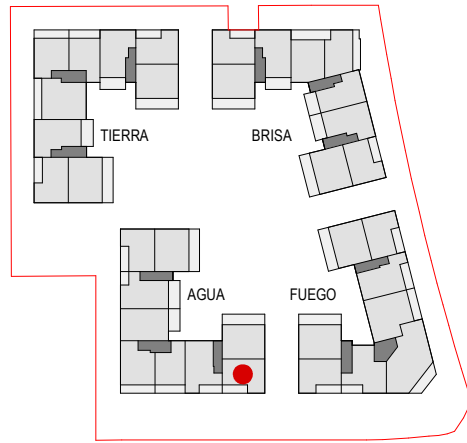
DOMUS VIVENDI CREO
GmbH & Co KG, Sucursal en España

The Circle - Carrer Illes Canàries 18
Polígono Industrial Son Bugadelles
07183 Santa Ponsa - Calvià
España - Baleares

**DOMUSVIVENDI
GROUP**

*the plans only contain examples for furnishings. the plans are a draft status and are subject to change. structural optimization will be added to the plan in future.
*all the brown drawings (like furniture) are not included on the project.





LIFESTYLE APARTMENTS
IBIZA

1st Floor



GROSS SURFACE AREA VT04	
Name	GA(m ²)
Entrance	5.79 m ²
Living-Dining-Kitchen	33.89 m ²
Master Bedroom	18.08 m ²
Bedroom 2	14.07 m ²
Master Bath	7.34 m ²
Bath 2	5.72 m ²
Hallway	2.12 m ²
Terrace	13.81 m ²
GROSS TOTAL AREA	100.82 m²

AGUA-1.07

TYPOLOGY
VT04

BEDROOMS	REV	DATE
2 BR	R00	08/05/23

ADDRESS

Av. Pere Matutes Noguera 66
07800 Ibiza, Islas Baleares

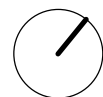
PROMOTER

DOMUS VIVENDI CREO
GmbH & Co KG, Sucursal en España

The Circle - Carrer Illes Canàries 18
Polígon Industrial Son Bugadelles
07183 Santa Ponsa - Calvià
Espanya - Balears

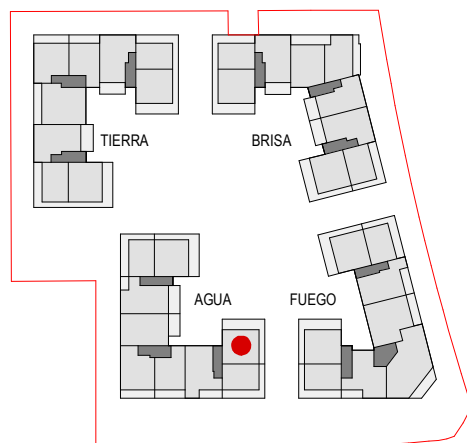
**DOMUSVIVENDI
GROUP**

*the plans only contain examples for furnishings. the plans are a draft status and are subject to change. structural optimization will be added to the plan in future.
*all the brown drawings (like furniture) are not included on the project.





LIFESTYLE APARTMENTS
IBIZA



3rd Floor



GROSS SURFACE AREA VT23 AGUA-3-08	
Name	GA(m ²)
Entrance	3.59 m ²
Living-Dining-Kitchen	40.26 m ²
Master Bedroom	18.23 m ²
Bedroom 2	12.08 m ²
Master Bath	6.16 m ²
Bath 2	4.63 m ²
Hallway	3.11 m ²
Terrace	45.05 m ²
Solarium	61.73 m ²
GROSS TOTAL AREA	194.85 m²

AGUA-3.08

TPOLOGY
VT23.S

BEDROOMS
2 BR

REV
R00

DATE
08/05/23

ADRESS

Avenida Pere Matutes 66. Platja d'en Bossa.
07800 Ibiza, Islas Baleares

PROMOTER

DOMUS VIVENDI CREO
GmbH & Co KG, Sucursal en España

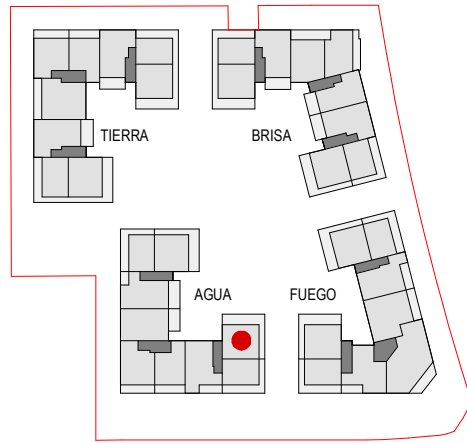
The Circle - Carrer Illes Canàries 18
Polígono Industrial Son Bugadelles
07183 Santa Ponsa - Calvià
España - Baleares

DOMUSVIVENDI
GROUP

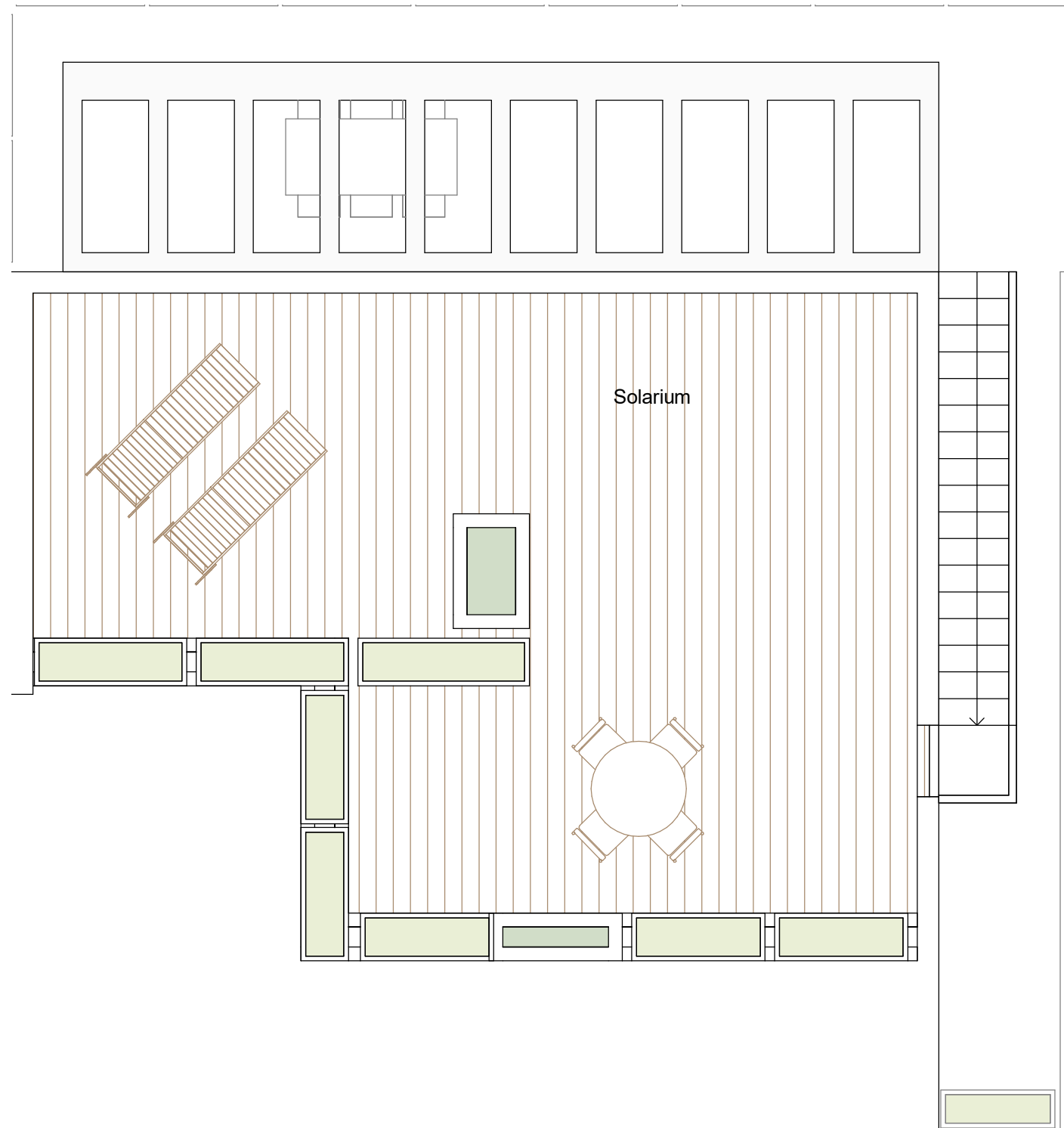




LIFESTYLE APARTMENTS
IBIZA



3rd Floor



AGUA-3.08

TPOLOGY
VT23.S

BEDROOMS
2 BR

REV
R00

DATE
08/05/23

ADRESS

Avenida Pere Matutes 66. Platja d'en Bossa.
07800 Ibiza, Islas Baleares

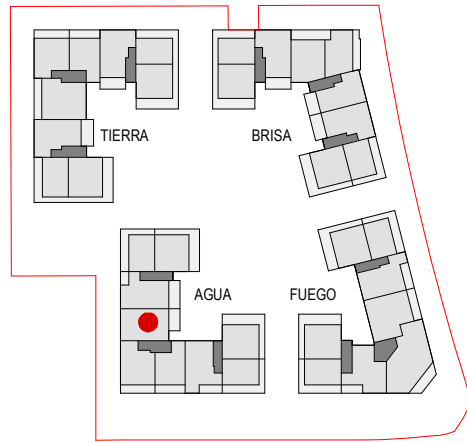
PROMOTER

DOMUS VIVENDI CREO
GmbH & Co KG, Sucursal en España

The Circle - Carrer Illes Canàries 18
Polígono Industrial Son Bugadelles
07183 Santa Ponsa - Calvià
España - Baleares

DOMUSVIVENDI
GROUP





LIFESTYLE APARTMENTS
IBIZA

3rd Floor



GROSS SURFACE AREA VT16 with solarium	
Name	GA(m ²)
Living-Dining-Kitchen	48.38 m ²
Master Bedroom	21.80 m ²
Bedroom 2	18.51 m ²
Master Bath	6.87 m ²
Bath 2	5.75 m ²
Hallway	5.75 m ²
WC	3.34 m ²
Laundry	5.61 m ²
Terrace	17.67 m ²
Solarium	107.79 m ²
GROSS TOTAL AREA	241.46 m²

AGUA-3.06

TPOLOGY
VT16

BEDROOMS
2 BR

REV
R00

DATE
08/05/23

ADRESS

Avenida Pere Matutes 66. Platja d'en Bossa.
07800 Ibiza, Islas Baleares

PROMOTER

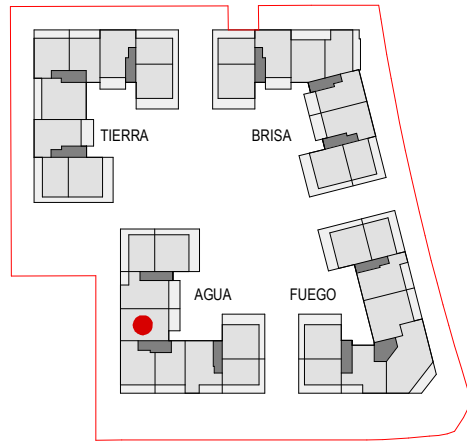
DOMUS VIVENDI CREO
GmbH & Co KG, Sucursal en España

The Circle - Carrer Illes Canàries 18
Polígono Industrial Son Bugadelles
07183 Santa Ponsa - Calvià
España - Baleares

**DOMUSVIVENDI
GROUP**

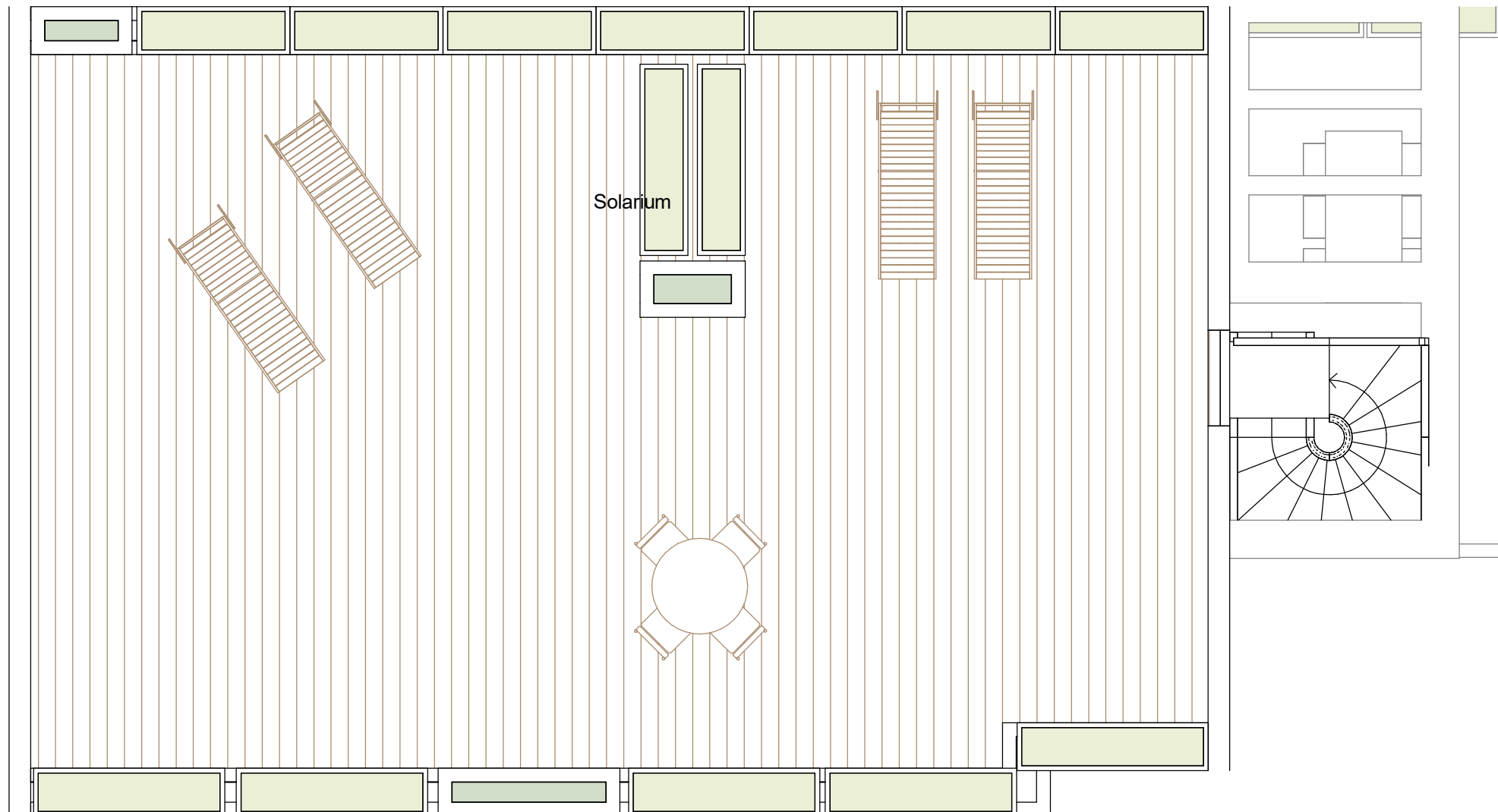
*the plans only contain examples for furnishings. the plans are a draft status and are subject to change. structural optimization will be added to the plan in future.
*all the brown drawings (like furniture) are not included on the project.





LIFESTYLE APARTMENTS
IBIZA

3rd Floor



AGUA-3.06

TPOLOGY
VT16

BEDROOMS
2 BR

REV
R00

DATE
08/05/23

ADRESS

Avenida Pere Matutes 66. Platja d'en Bossa.
07800 Ibiza, Islas Baleares

PROMOTER

DOMUS VIVENDI CREO
GmbH & Co KG, Sucursal en España

The Circle - Carrer Illes Canàries 18
Polígono Industrial Son Bugadelles
07183 Santa Ponsa - Calvià
España - Baleares

DOMUSVIVENDI
GROUP





LIFESTYLE APARTMENTS
IBIZA



3rd Floor



GROSS SURFACE AREA VT23 AGUA-3-02	
Name	GA(m ²)
Entrance	3.59 m ²
Living-Dining-Kitchen	40.26 m ²
Master Bedroom	18.23 m ²
Bedroom 2	12.08 m ²
Master Bath	6.16 m ²
Bath 2	4.63 m ²
Hallway	3.11 m ²
Terrace	45.05 m ²
Solarium	64.31 m ²
GROSS TOTAL AREA	197.44 m²

AGUA-3.02

TYPOLOGY
VT23

BEDROOMS
2 BR

REV
R00

DATE
12/09/23

ADDRESS

Avenida Pere Matutes 66. Platja d'en Bossa.
07800 Ibiza, Islas Baleares

PROMOTER

DOMUS VIVENDI CREO
GmbH & Co KG, Sucursal en España

The Circle - Carrer Illes Canàries 18
Polígono Industrial Son Bugadelles
07183 Santa Ponsa - Calvià
España - Baleares

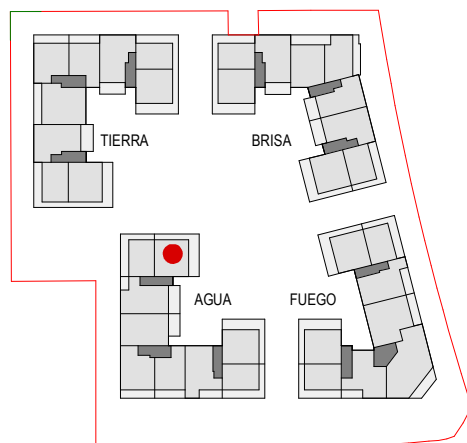
**DOMUSVIVENDI
GROUP**

*the plans only contain examples for furnishings. the plans are a draft status and are subject to change. structural optimization will be added to the plan in future.
*all the brown drawings (like furniture) are not included on the project.

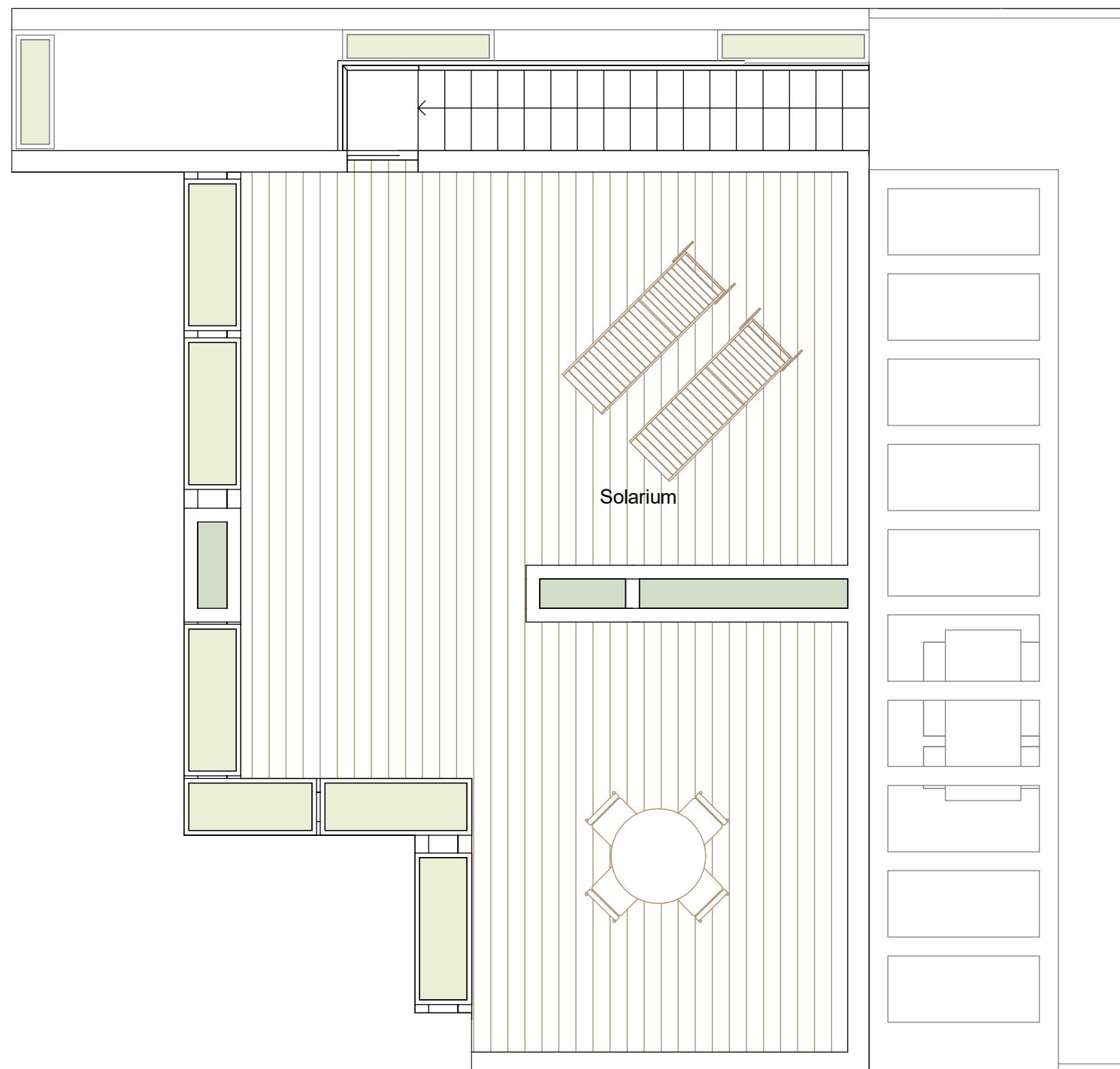




LIFESTYLE APARTMENTS
IBIZA



3rd Floor



AGUA-3.02

TPOLOGY
VT23

BEDROOMS
2 BR

REV
R00

DATE
12/09/23

ADRESS

Avenida Pere Matutes 66. Platja d'en Bossa.
07800 Ibiza, Islas Baleares

PROMOTER

DOMUS VIVENDI CREO
GmbH & Co KG, Sucursal en España

The Circle - Carrer Illes Canàries 18
Polígono Industrial Son Bugadelles
07183 Santa Ponsa - Calvià
España - Baleares

DOMUSVIVENDI
GROUP



2/2

*the plans only contain examples for furnishings. the plans are a draft status and are subject to change. structural optimization will be added to the plan in future.
*all the brown drawings (like furniture) are not included on the project.



1st Floor



LIFESTYLE APARTMENTS
IBIZA

GROSS SURFACE AREA VT18	
Name	GA(m ²)
Entrance	3.55 m ²
Living-Dining-Kitchen	40.55 m ²
Master Bedroom	18.70 m ²
Bedroom 2	16.47 m ²
Master Bath	7.17 m ²
Bath 2	5.23 m ²
Hallway	3.28 m ²
Terrace	27.41 m ²
GROSS TOTAL AREA	122.36 m²

BRISA-1.05

TPOLOGY
VT18

BEDROOMS
2 BR

REV
R00

DATE
08/05/23

ADDRESS

Av. Pere Matutes Noguera 66
07800 Ibiza, Islas Baleares

PROMOTER

DOMUS VIVENDI CREO
GmbH & Co KG, Sucursal en España

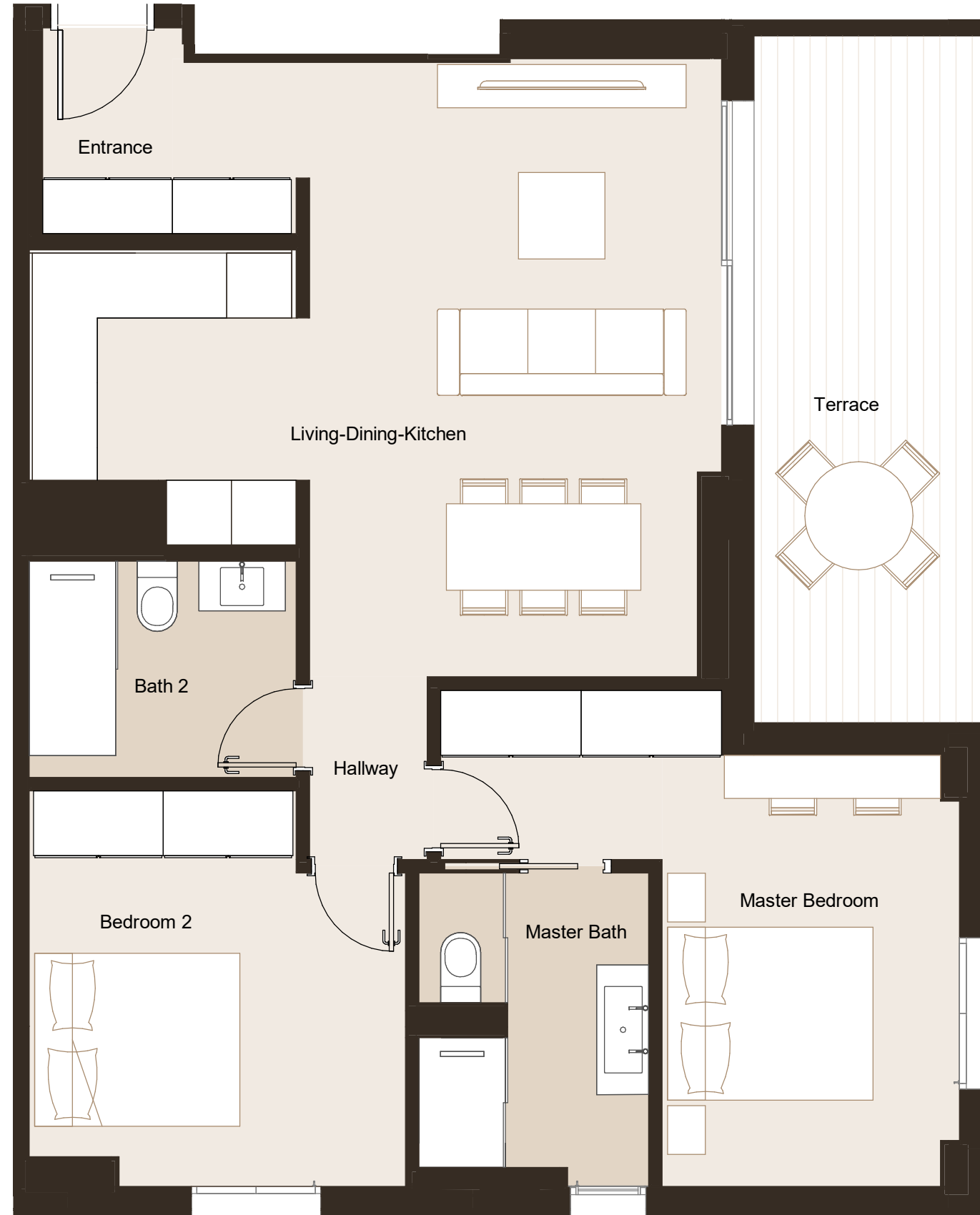
The Circle - Carrer Illes Canàries 18
Polígono Industrial Son Bugadelles
07183 Santa Ponsa - Calvià
España - Baleares

**DOMUSVIVENDI
GROUP**

*the plans only contain examples for furnishings. the plans are a draft status and are subject to change. structural optimization will be added to the plan in future.
*all the brown drawings (like furniture) are not included on the project.



2nd Floor



LIFESTYLE APARTMENTS
IBIZA

GROSS SURFACE AREA VT04	
Name	GA(m ²)
Entrance	5.79 m ²
Living-Dining-Kitchen	33.89 m ²
Master Bedroom	18.08 m ²
Bedroom 2	14.07 m ²
Master Bath	7.34 m ²
Bath 2	5.72 m ²
Hallway	2.12 m ²
Terrace	13.81 m ²
GROSS TOTAL AREA	100.82 m²

BRISA-2.03

TPOLOGY
VT04.S

BEDROOMS
2 BR

REV
R00

DATE
08/05/23

ADDRESS

Av. Pere Matutes Noguera 66
07800 Ibiza, Islas Baleares

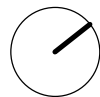
PROMOTER

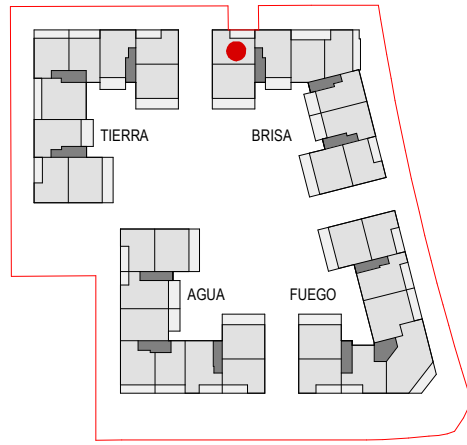
DOMUS VIVENDI CREO
GmbH & Co KG, Sucursal en España

The Circle - Carrer Illes Canàries 18
Polígono Industrial Son Bugadelles
07183 Santa Ponsa - Calvià
España - Baleares

**DOMUSVIVENDI
GROUP**

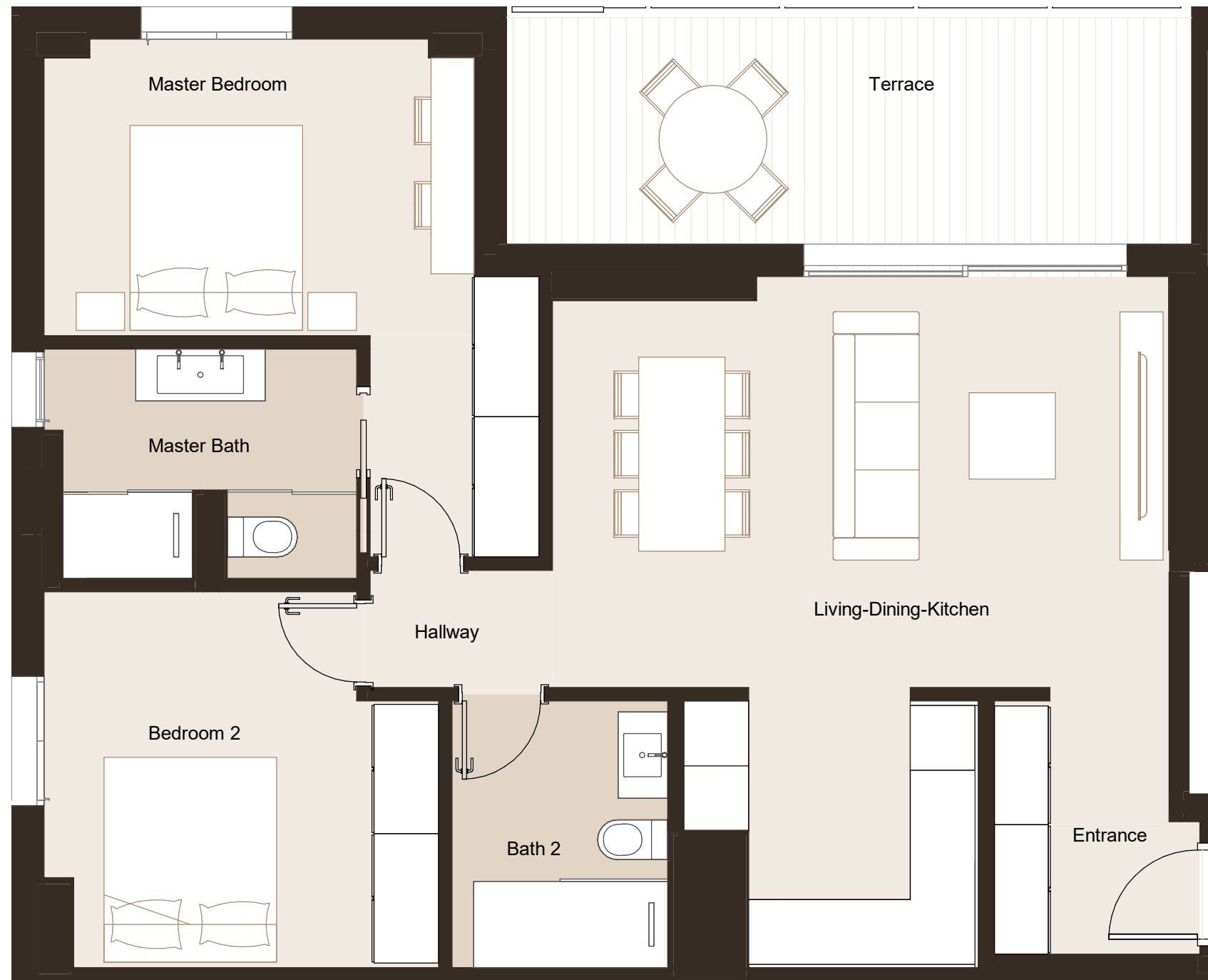
*the plans only contain examples for furnishings. the plans are a draft status and are subject to change. structural optimization will be added to the plan in future.
*all the brown drawings (like furniture) are not included on the project.





LIFESTYLE APARTMENTS
IBIZA

2nd Floor



GROSS SURFACE AREA VT04	
Name	GA(m ²)
Entrance	5.79 m ²
Living-Dining-Kitchen	33.89 m ²
Master Bedroom	18.08 m ²
Bedroom 2	14.07 m ²
Master Bath	7.34 m ²
Bath 2	5.72 m ²
Hallway	2.12 m ²
Terrace	13.81 m ²
GROSS TOTAL AREA	100.82 m²

BRISA-2.07

TYOLOGY
VT04

BEDROOMS	REV	DATE
2 BR	R00	08/05/23

ADDRESS

Av. Pere Matutes Noguera 66
07800 Ibiza, Islas Baleares

PROMOTER

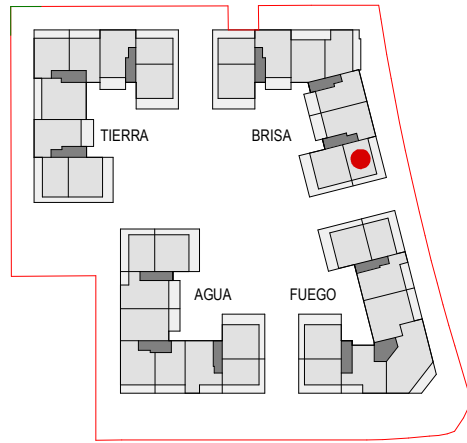
DOMUS VIVENDI CREO
GmbH & Co KG, Sucursal en España

The Circle - Carrer Illes Canàries 18
Polígono Industrial Son Bugadelles
07183 Santa Ponsa - Calvià
Espanya - Balears

DOMUSVIVENDI
GROUP

*the plans only contain examples for furnishings. the plans are a draft status and are subject to change. structural optimization will be added to the plan in future.
*all the brown drawings (like furniture) are not included on the project.





3rd Floor



LIFESTYLE APARTMENTS
IBIZA

GROSS SURFACE AREA VT25	
Name	GA(m ²)
Entrance	3.79 m ²
Living-Dining-Kitchen	26.60 m ²
Master Bedroom	12.44 m ²
Bedroom 2	11.99 m ²
Master Bath	6.75 m ²
Bath 2	2.77 m ²
Hallway	2.31 m ²
Terrace	34.16 m ²
GROSS TOTAL AREA	100.80 m²

BRISA-3.03

TYPOLOGY
VT25.S

BEDROOMS
2 BR

REV
R00

DATE
12/09/23

ADDRESS

Avenida Pere Matutes 66. Platja d'en Bossa.
07800 Ibiza, Islas Baleares

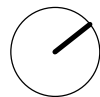
PROMOTER

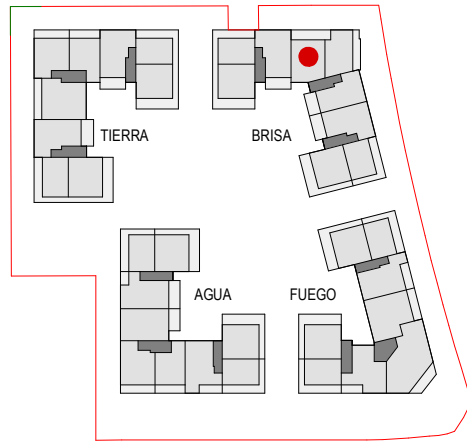
DOMUS VIVENDI CREO
GmbH & Co KG, Sucursal en España

The Circle - Carrer Illes Canàries 18
Polígono Industrial Son Bugadelles
07183 Santa Ponsa - Calvià
España - Baleares

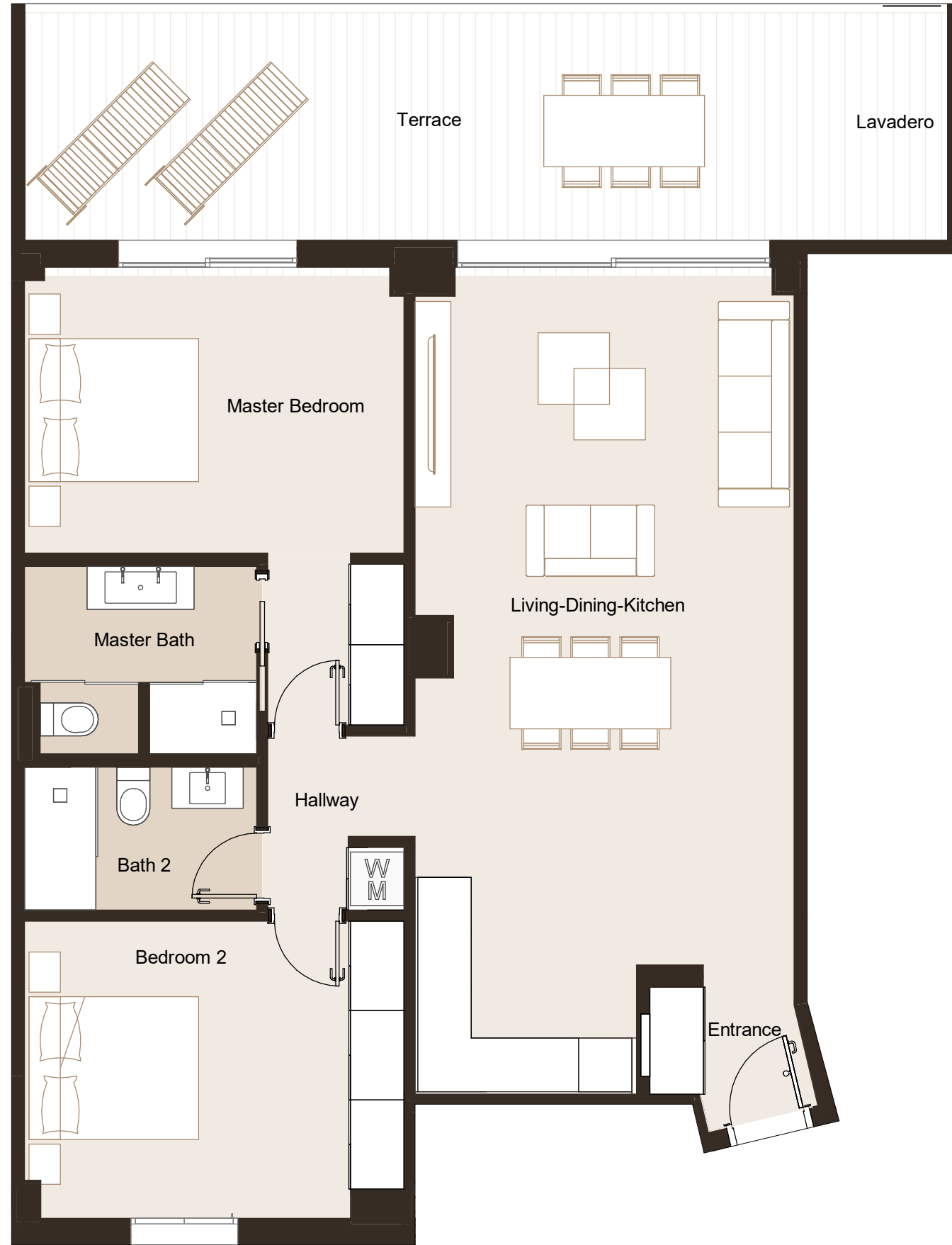
**DOMUSVIVENDI
GROUP**

*the plans only contain examples for furnishings. the plans are a draft status and are subject to change. structural optimization will be added to the plan in future.
*all the brown drawings (like furniture) are not included on the project.





3rd Floor



LIFESTYLE APARTMENTS
IBIZA

GROSS SURFACE AREA VT18	
Name	GA(m ²)
Entrance	3.55 m ²
Living-Dining-Kitchen	40.55 m ²
Master Bedroom	18.70 m ²
Bedroom 2	16.47 m ²
Master Bath	7.17 m ²
Bath 2	5.23 m ²
Hallway	3.28 m ²
Terrace	27.41 m ²
GROSS TOTAL AREA	122.36 m²

BRISA-3.05

TYPOLOGY
VT18

BEDROOMS
2 BR

REV
R00

DATE
12/09/23

ADDRESS

Avenida Pere Matutes 66. Platja d'en Bossa.
07800 Ibiza, Islas Baleares

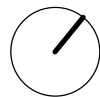
PROMOTER

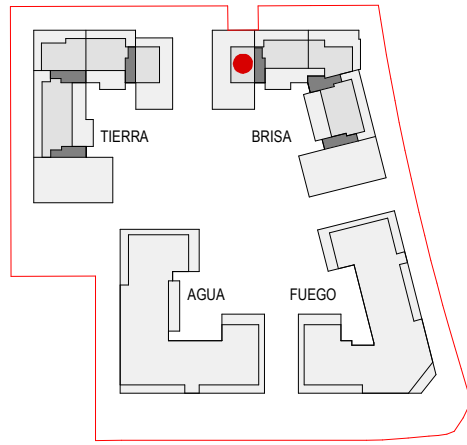
DOMUS VIVENDI CREO
GmbH & Co KG, Sucursal en España

The Circle - Carrer Illes Canàries 18
Polígono Industrial Son Bugadelles
07183 Santa Ponsa - Calvià
España - Baleares

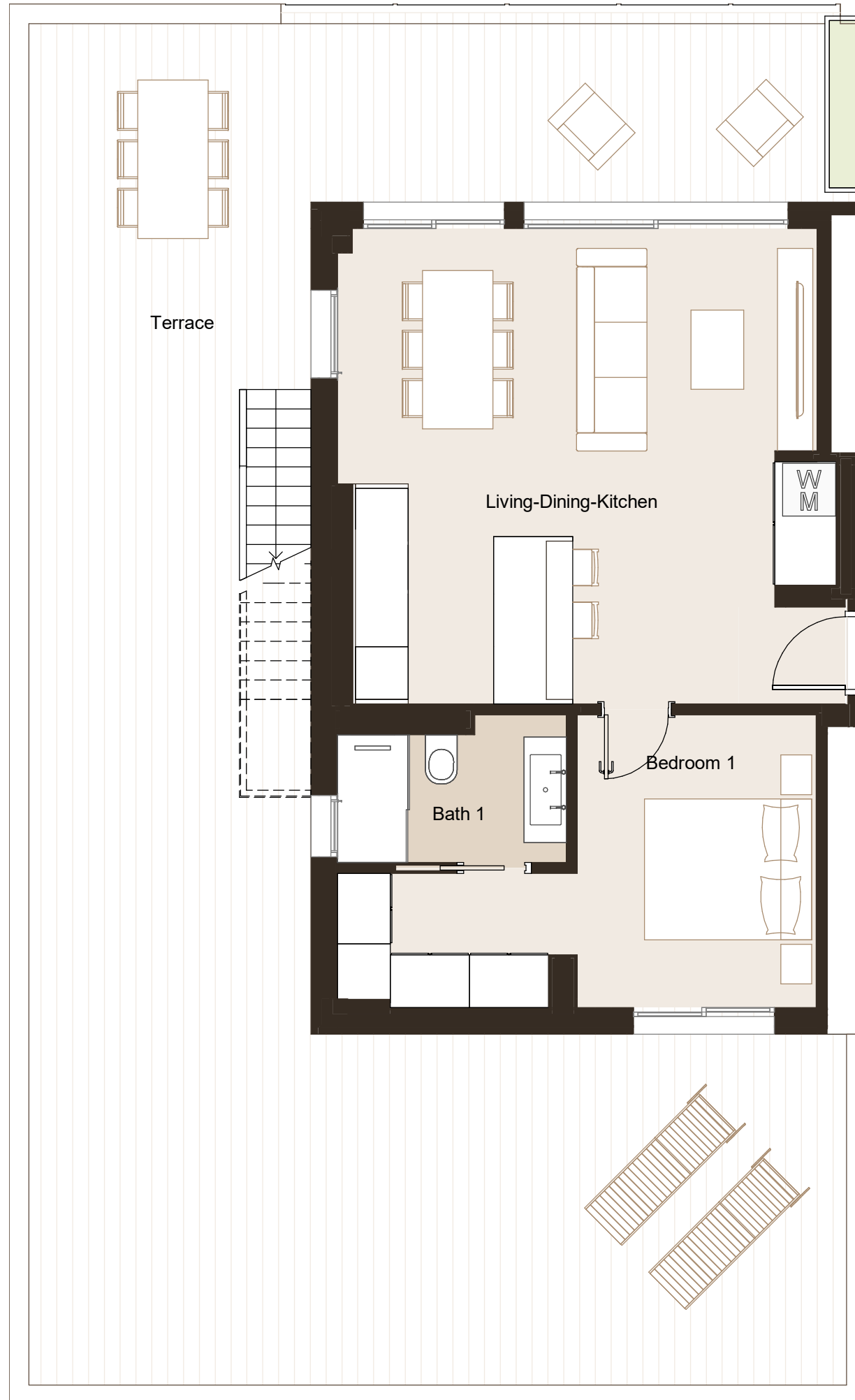
**DOMUSVIVENDI
GROUP**

*the plans only contain examples for furnishings. the plans are a draft status and are subject to change. structural optimization will be added to the plan in future.
*all the brown drawings (like furniture) are not included on the project.





Penthouse



LIFESTYLE APARTMENTS
IBIZA

GROSS SURFACE AREA VT38 BRISA	
Name	GA(m ²)
Living-Dining-Kitchen	35.63 m ²
Bedroom 1	17.36 m ²
Bath 1	5.30 m ²
Terrace	97.18 m ²
Solarium	29.34 m ²
GROSS TOTAL AREA	184.80 m²

BRISA-4.04

TYPOLOGY
VT38

BEDROOMS
1 BR

REV
R00

DATE
08/05/23

ADDRESS

Avenida Pere Matutes 66. Platja d'en Bossa.
07800 Ibiza, Islas Baleares

PROMOTER

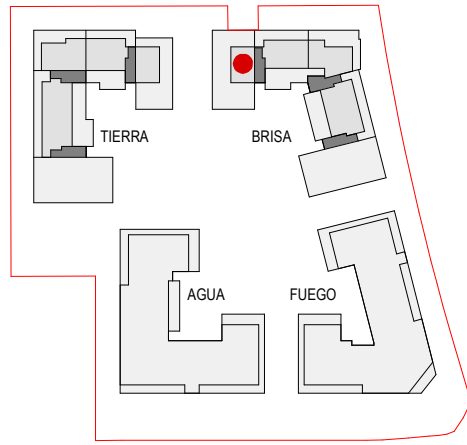
DOMUS VIVENDI CREO
GmbH & Co KG, Sucursal en España

The Circle - Carrer Illes Canàries 18
Polígono Industrial Son Bugadelles
07183 Santa Ponsa - Calvià
España - Baleares

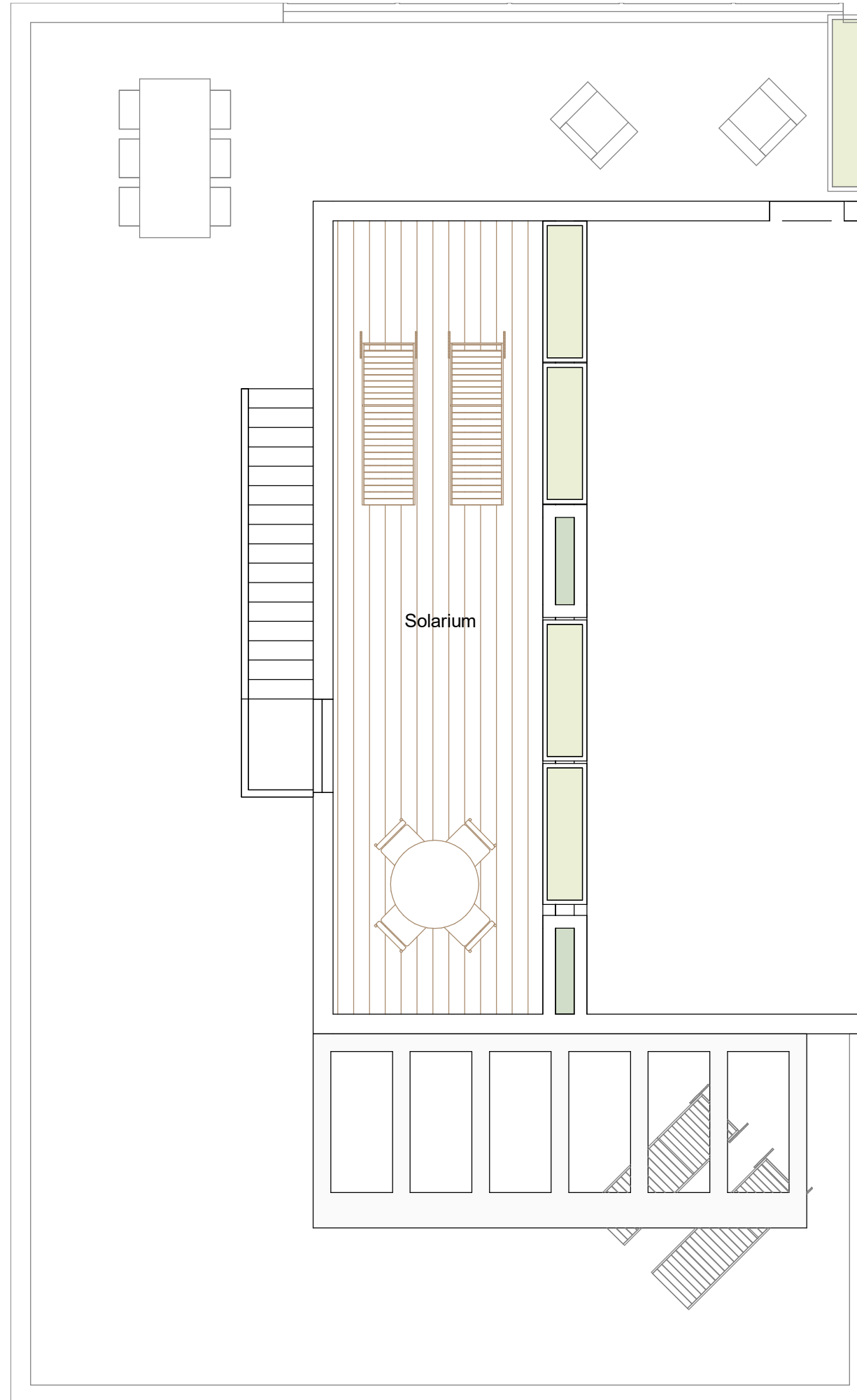
**DOMUSVIVENDI
GROUP**

*the plans only contain examples for furnishings. the plans are a draft status and are subject to change. structural optimization will be added to the plan in future.
*all the brown drawings (like furniture) are not included on the project.





Penthouse



LIFESTYLE APARTMENTS
IBIZA

BRISA-4.04

TYPOLOGY
VT38

BEDROOMS
1 BR

REV
R00

DATE
08/05/23

ADDRESS

Avenida Pere Matutes 66. Platja d'en Bossa.
07800 Ibiza, Islas Baleares

PROMOTER

DOMUS VIVENDI CREO
GmbH & Co KG, Sucursal en España

The Circle - Carrer Illes Canàries 18
Polígono Industrial Son Bugadelles
07183 Santa Ponsa - Calvià
España - Baleares

DOMUSVIVENDI
GROUP



LIFESTYLE APARTMENTS
IBIZA

Ground Floor



GROSS SURFACE AREA VT37	
Name	GA(m ²)
Entrance	3.44 m ²
Living-Dining-Kitchen	34.39 m ²
Master Bedroom	18.98 m ²
Bedroom 2	14.08 m ²
Master Bath	6.52 m ²
Bath 2	5.29 m ²
Hallway	3.48 m ²
Terrace	22.16 m ²
	108.34 m²
Garden	49.61 m ²
	49.61 m²

FUEGO-0.04

TPOLOGY
VT37

BEDROOMS
2 BR

REV
R00

DATE
08/05/23

ADRESS

Avenida Pere Matutes 66. Platja d'en Bossa.
07800 Ibiza, Islas Baleares

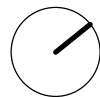
PROMOTER

DOMUS VIVENDI CREO
GmbH & Co KG, Sucursal en España

The Circle - Carrer Illes Canàries 18
Polígono Industrial Son Bugadelles
07183 Santa Ponsa - Calvià
España - Baleares

**DOMUSVIVENDI
GROUP**

*the plans only contain examples for furnishings. the plans are a draft status and are subject to change. structural optimization will be added to the plan in future.
*all the brown drawings (like furniture) are not included on the project.





Ground Floor



LIFESTYLE APARTMENTS
IBIZA

GROSS SURFACE AREA VT04 - FUEGO-3-00-A	
Name	GA(m ²)
Entrance	5.79 m ²
Living-Dining-Kitchen	33.89 m ²
Master Bedroom	18.08 m ²
Bedroom 2	14.07 m ²
Master Bath	7.34 m ²
Bath 2	5.72 m ²
Hallway	2.12 m ²
Terrace	13.81 m ²
	100.82 m ²
Garden	68.63 m ²
	68.63 m ²

FUEGO-0.06

TYPOLOGY
VT04

BEDROOMS
2 BR

REV
R00

DATE
08/05/23

ADDRESS

Avenida Pere Matutes 66. Platja d'en Bossa.
07800 Ibiza, Islas Baleares

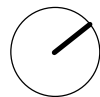
PROMOTER

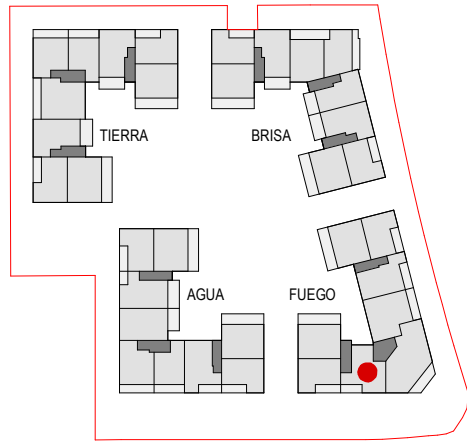
DOMUS VIVENDI CREO
GmbH & Co KG, Sucursal en España

The Circle - Carrer Illes Canàries 18
Polígono Industrial Son Bugadelles
07183 Santa Ponsa - Calvià
España - Baleares

DOMUSVIVENDI
GROUP

*the plans only contain examples for furnishings. the plans are a draft status and are subject to change. structural optimization will be added to the plan in future.
*all the brown drawings (like furniture) are not included on the project.





1st Floor



LIFESTYLE APARTMENTS
IBIZA

GROSS SURFACE AREA VT11	
Name	GA(m ²)
Entrance	3.90 m ²
Living-Dining-Kitchen	46.74 m ²
Master Bedroom	17.47 m ²
Bedroom 2	12.02 m ²
Bedroom 3	12.96 m ²
Master Bath	5.25 m ²
Bath 2	4.58 m ²
Hallway	3.67 m ²
Terrace	12.76 m ²
GROSS TOTAL AREA	119.35 m²

FUEGO-1.01

TPOLOGY
VT11

BEDROOMS	REV	DATE
3 BR	R00	08/05/23

ADDRESS

Av. Pere Matutes Noguera 66
07800 Ibiza, Islas Baleares

PROMOTER

DOMUS VIVENDI CREO
GmbH & Co KG, Sucursal en España

The Circle - Carrer Illes Canàries 18
Polígono Industrial Son Bugadelles
07183 Santa Ponsa - Calvià
España - Baleares

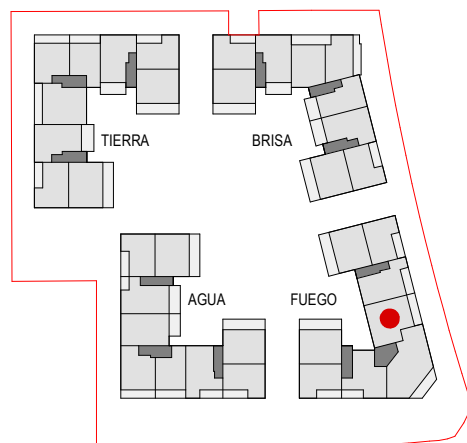
**DOMUSVIVENDI
GROUP**

*the plans only contain examples for furnishings. the plans are a draft status and are subject to change. structural optimization will be added to the plan in future.
*all the brown drawings (like furniture) are not included on the project.





LIFESTYLE APARTMENTS
IBIZA



2nd Floor



GROSS SURFACE AREA VT05	
Name	GA(m ²)
Entrance	17.55 m ²
Living-Dining-Kitchen	40.16 m ²
Master Bedroom	20.17 m ²
Bedroom 2	11.60 m ²
Bedroom 3	12.49 m ²
Master Bath	5.46 m ²
Bath 2	5.25 m ²
Hallway	4.06 m ²
WC	5.61 m ²
Terrace	17.95 m ²
GROSS TOTAL AREA	140.30 m²

FUEGO-2.05

TYPOLOGY
VT05

BEDROOMS
3 BR

REV
R00

DATE
08/05/23

ADDRESS

Av. Pere Matutes Noguera 66
07800 Ibiza, Islas Baleares

PROMOTER

DOMUS VIVENDI CREO
GmbH & Co KG, Sucursal en España

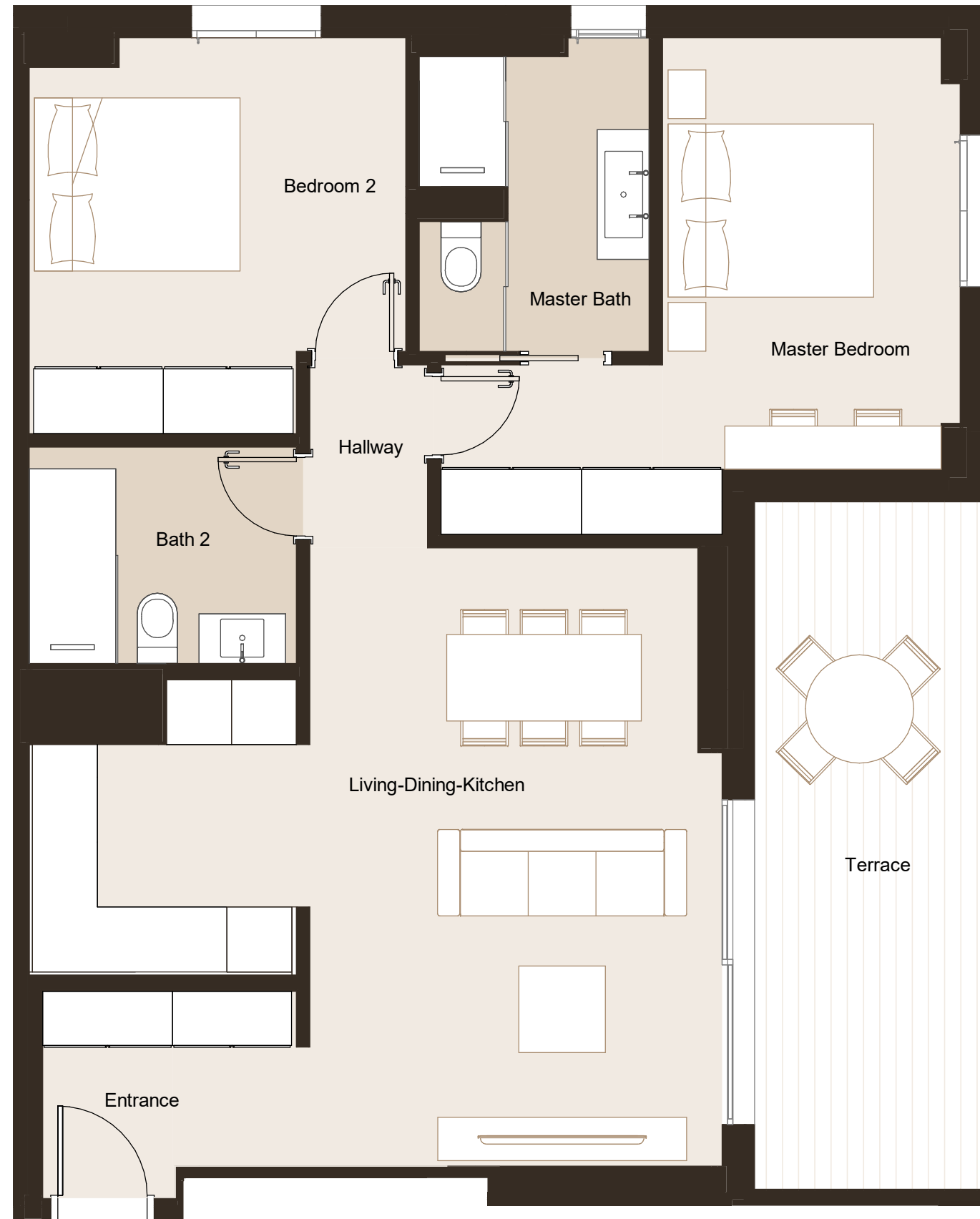
The Circle - Carrer Illes Canàries 18
Polígono Industrial Son Bugadelles
07183 Santa Ponsa - Calvià
España - Baleares

**DOMUSVIVENDI
GROUP**

*the plans only contain examples for furnishings. the plans are a draft status and are subject to change. structural optimization will be added to the plan in future.
*all the brown drawings (like furniture) are not included on the project.



2nd Floor



LIFESTYLE APARTMENTS
IBIZA

GROSS SURFACE AREA VT04	
Name	GA(m ²)
Entrance	5.79 m ²
Living-Dining-Kitchen	33.89 m ²
Master Bedroom	18.08 m ²
Bedroom 2	14.07 m ²
Master Bath	7.34 m ²
Bath 2	5.72 m ²
Hallway	2.12 m ²
Terrace	13.81 m ²
GROSS TOTAL AREA	100.82 m²

FUEGO-2.06

TYPOLOGY
VT04

BEDROOMS	REV	DATE
2 BR	R00	08/05/23

ADDRESS

Av. Pere Matutes Noguera 66
07800 Ibiza, Islas Baleares

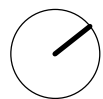
PROMOTER

DOMUS VIVENDI CREO
GmbH & Co KG, Sucursal en España

The Circle - Carrer Illes Canàries 18
Polígon Industrial Son Bugadelles
07183 Santa Ponsa - Calvià
Espanya - Baleares

DOMUSVIVENDI
GROUP

*the plans only contain examples for furnishings. the plans are a draft status and are subject to change. structural optimization will be added to the plan in future.
*all the brown drawings (like furniture) are not included on the project.





LIFESTYLE APARTMENTS
IBIZA



2nd Floor



GROSS SURFACE AREA VT02	
Name	GA(m ²)
Entrance	6.48 m ²
Living-Dining-Kitchen	35.92 m ²
Master Bedroom	20.25 m ²
Bedroom 2	14.69 m ²
Bedroom 3	13.38 m ²
Master Bath	5.18 m ²
Bath 2	4.88 m ²
Terrace	15.23 m ²
GROSS TOTAL AREA	116.01 m²

FUEGO-2.08

TYPOLOGY
VT02

BEDROOMS
3 BR

REV
R00

DATE
08/05/23

ADDRESS

Av. Pere Matutes Noguera 66
07800 Ibiza, Islas Baleares

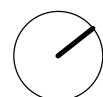
PROMOTER

DOMUS VIVENDI CREO
GmbH & Co KG, Sucursal en España

The Circle - Carrer Illes Canàries 18
Polígono Industrial Son Bugadelles
07183 Santa Ponsa - Calvià
España - Baleares

**DOMUSVIVENDI
GROUP**

*the plans only contain examples for furnishings. the plans are a draft status and are subject to change. structural optimization will be added to the plan in future.
*all the brown drawings (like furniture) are not included on the project.





3rd Floor



LIFESTYLE APARTMENTS
IBIZA

GROSS SURFACE AREA VT25 FUEGO-3-03	
Name	GA(m ²)
Entrance	3.79 m ²
Living-Dining-Kitchen	26.60 m ²
Master Bedroom	12.44 m ²
Bedroom 2	11.99 m ²
Master Bath	6.75 m ²
Bath 2	2.77 m ²
Hallway	2.31 m ²
Terrace	34.16 m ²
Solarium	44.04 m ²
GROSS TOTAL AREA	144.84 m²

FUEGO-3.03

TYPOLOGY
VT25.S

BEDROOMS
2 BR

REV
R00

DATE
08/05/23

ADDRESS

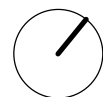
Avenida Pere Matutes 66. Platja d'en Bossa.
07800 Ibiza, Islas Baleares

PROMOTER

DOMUS VIVENDI CREO
GmbH & Co KG, Sucursal en España

The Circle - Carrer Illes Canàries 18
Polígono Industrial Son Bugadelles
07183 Santa Ponsa - Calvià
España - Baleares

**DOMUSVIVENDI
GROUP**

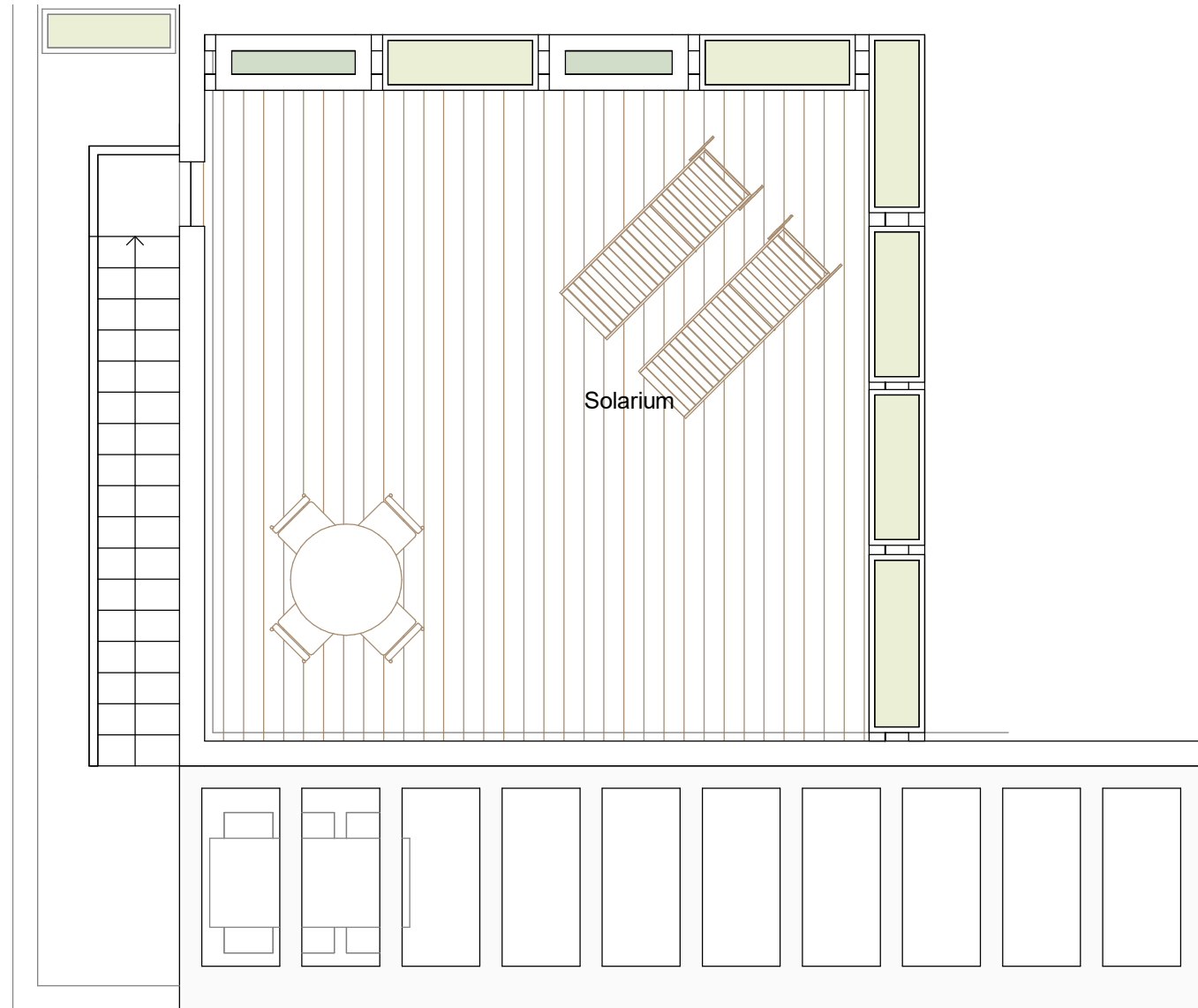


1/2

*the plans only contain examples for furnishings. the plans are a draft status and are subject to change. structural optimization will be added to the plan in future.
*all the brown drawings (like furniture) are not included on the project.



3rd Floor



LIFESTYLE APARTMENTS
IBIZA

FUEGO-3.03

TYPOLOGY
VT25.S

BEDROOMS
2 BR

REV
R00

DATE
08/05/23

ADRESS

Avenida Pere Matutes 66. Platja d'en Bossa.
07800 Ibiza, Islas Baleares

PROMOTER

DOMUS VIVENDI CREO
GmbH & Co KG, Sucursal en España

The Circle - Carrer Illes Canàries 18
Polígon Industrial Son Bugadelles
07183 Santa Ponsa - Calvià
Espanya - Balears

DOMUSVIVENDI
GROUP



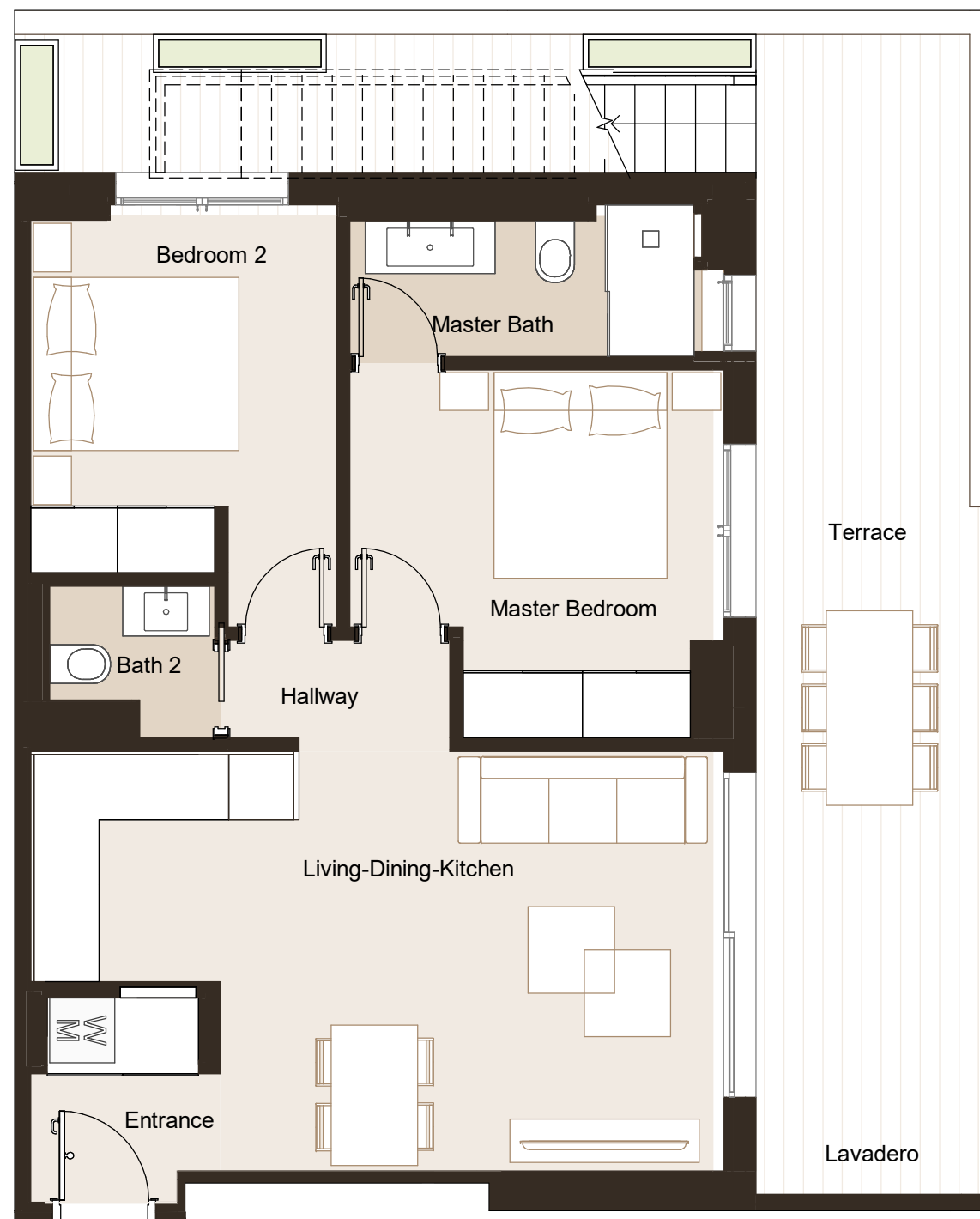
*the plans only contain examples for furnishings. the plans are a draft status and are subject to change. structural optimization will be added to the plan in future.
*all the brown drawings (like furniture) are not included on the project.



LIFESTYLE APARTMENTS
IBIZA



3rd Floor



GROSS SURFACE AREA VT25 FUEGO-3-06	
Name	GA(m ²)
Entrance	3.79 m ²
Living-Dining-Kitchen	26.60 m ²
Master Bedroom	12.44 m ²
Bedroom 2	11.99 m ²
Master Bath	6.75 m ²
Bath 2	2.77 m ²
Hallway	2.31 m ²
Terrace	34.16 m ²
Solarium	47.50 m ²
GROSS TOTAL AREA	148.30 m²

FUEGO-3.06

TYPOLOGY
VT25

BEDROOMS
2 BR

REV
R00

DATE
12/09/23

ADRESS

Avenida Pere Matutes 66. Platja d'en Bossa.
07800 Ibiza, Islas Baleares

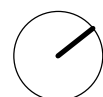
PROMOTER

DOMUS VIVENDI CREO
GmbH & Co KG, Sucursal en España

The Circle - Carrer Illes Canàries 18
Polígono Industrial Son Bugadelles
07183 Santa Ponsa - Calvià
Espanya - Baleares

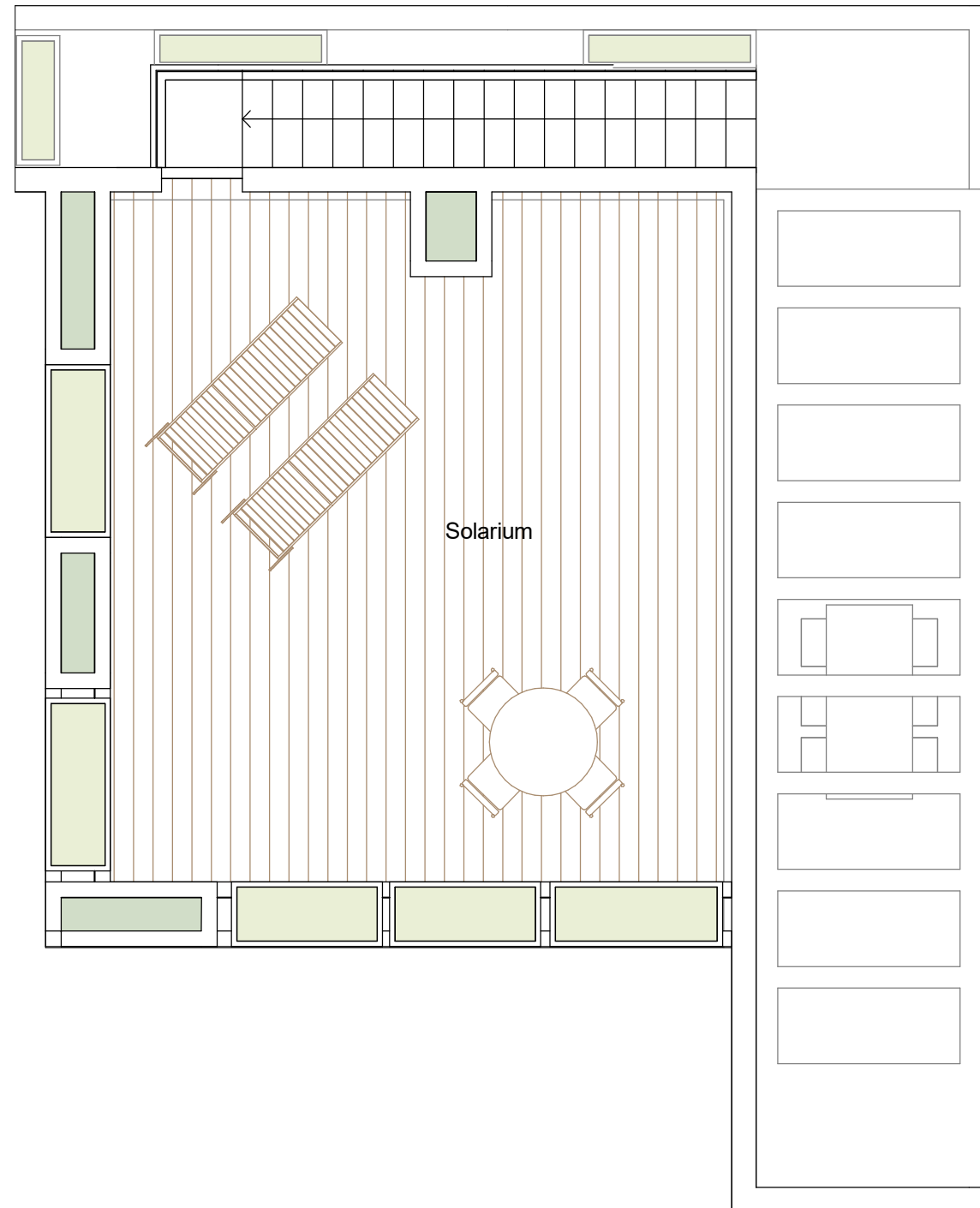
**DOMUSVIVENDI
GROUP**

*the plans only contain examples for furnishings. the plans are a draft status and are subject to change. structural optimization will be added to the plan in future.
*all the brown drawings (like furniture) are not included on the project.





3rd Floor



LIFESTYLE APARTMENTS
IBIZA

FUEGO-3.06

TPOLOGY
VT25

BEDROOMS
2 BR

REV
R00

DATE
12/09/23

ADRESS

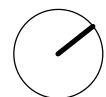
Avenida Pere Matutes 66. Platja d'en Bossa.
07800 Ibiza, Islas Baleares

PROMOTER

DOMUS VIVENDI CREO
GmbH & Co KG, Sucursal en España

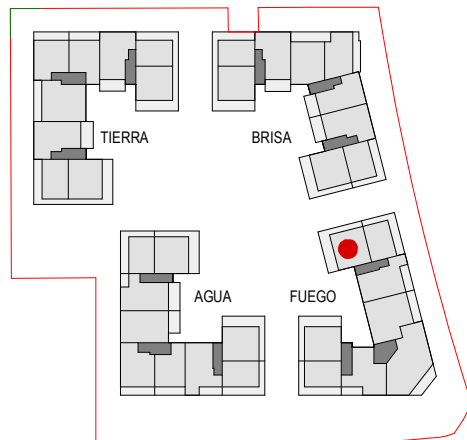
The Circle - Carrer Illes Canàries 18
Polígono Industrial Son Bugadelles
07183 Santa Ponsa - Calvià
Espanya - Baleares

DOMUSVIVENDI
GROUP





LIFESTYLE APARTMENTS
IBIZA



3rd Floor



GROSS SURFACE AREA VT23 FUEGO-3-07	
Name	GA(m ²)
Entrance	3.59 m ²
Living-Dining-Kitchen	40.26 m ²
Master Bedroom	18.23 m ²
Bedroom 2	12.08 m ²
Master Bath	6.16 m ²
Bath 2	4.63 m ²
Hallway	3.11 m ²
Terrace	45.05 m ²
Solarium	64.03 m ²
GROSS TOTAL AREA	197.15 m²

FUEGO-3.07

TYPOLOGY
VT23.S

BEDROOMS
2 BR

REV
R00

DATE
12/09/23

ADRESS

Avenida Pere Matutes 66. Platja d'en Bossa.
07800 Ibiza, Islas Baleares

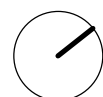
PROMOTER

DOMUS VIVENDI CREO
GmbH & Co KG, Sucursal en España

The Circle - Carrer Illes Canàries 18
Polígono Industrial Son Bugadelles
07183 Santa Ponsa - Calvià
Espanya - Baleares

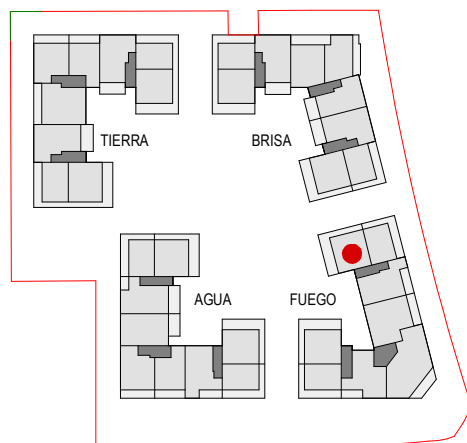
**DOMUSVIVENDI
GROUP**

*the plans only contain examples for furnishings. the plans are a draft status and are subject to change. structural optimization will be added to the plan in future.
*all the brown drawings (like furniture) are not included on the project.

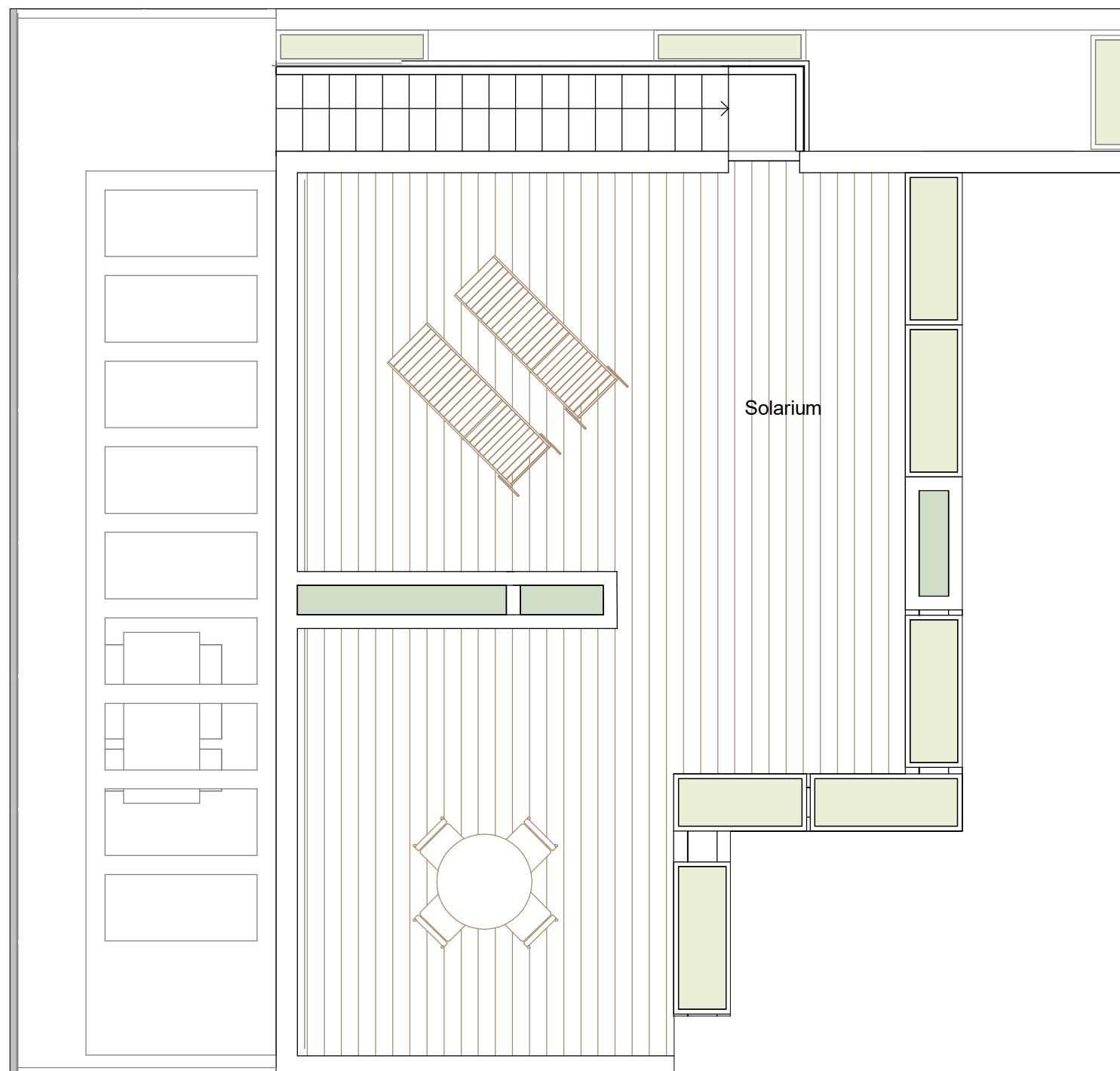




LIFESTYLE APARTMENTS
IBIZA



3rd Floor



FUEGO-3.07

TPOLOGY
VT23.S

BEDROOMS
2 BR

REV
R00

DATE
12/09/23

ADRESS

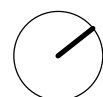
Avenida Pere Matutes 66. Platja d'en Bossa.
07800 Ibiza, Islas Baleares

PROMOTER

DOMUS VIVENDI CREO
GmbH & Co KG, Sucursal en España

The Circle - Carrer Illes Canàries 18
Polígono Industrial Son Bugadelles
07183 Santa Ponsa - Calvià
España - Baleares

DOMUSVIVENDI
GROUP

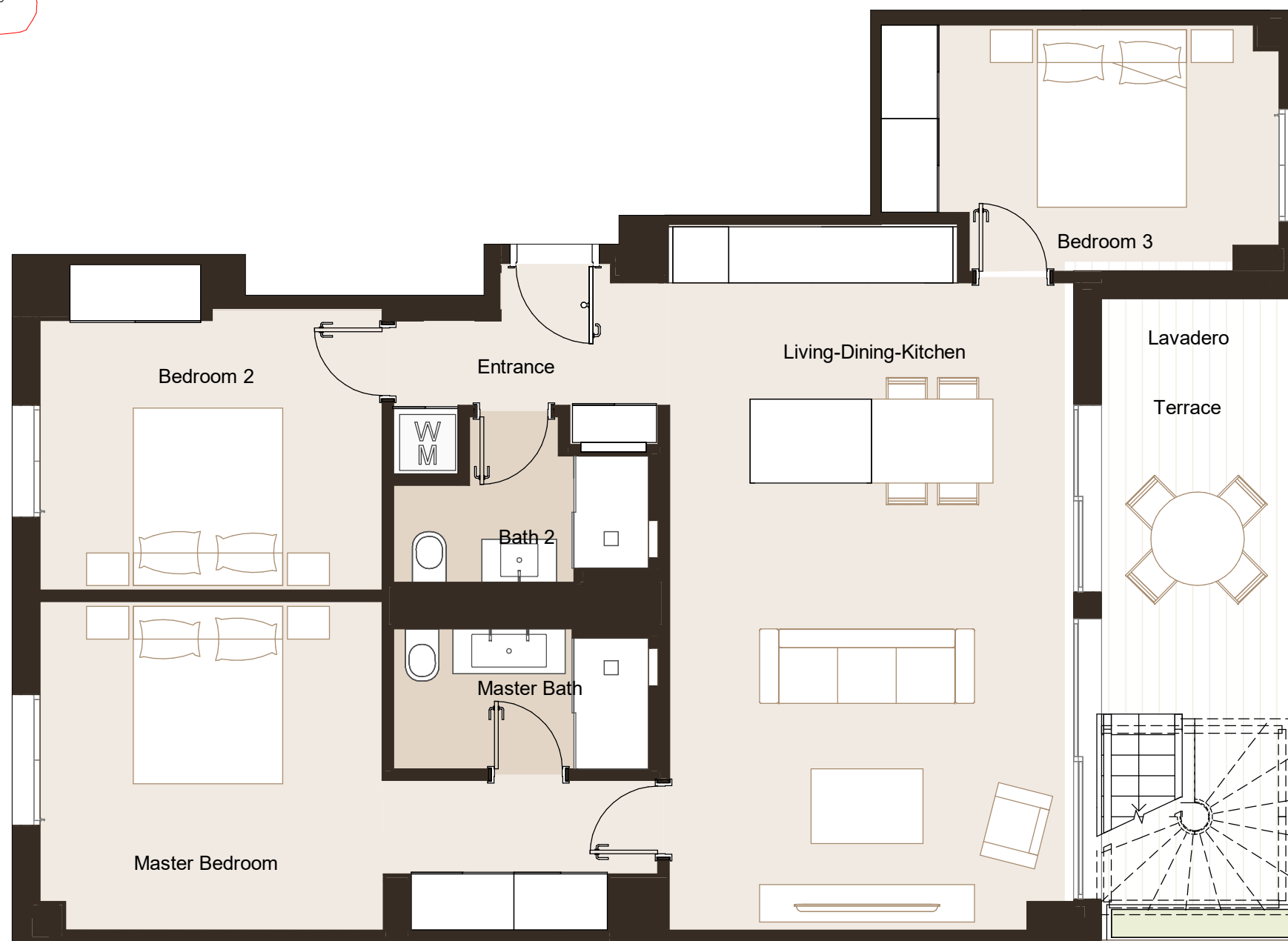




LIFESTYLE APARTMENTS
IBIZA



3rd Floor



GROSS SURFACE AREA VT02 with solarium	
Name	GA(m ²)
Entrance	6.48 m ²
Living-Dining-Kitchen	35.92 m ²
Master Bedroom	20.25 m ²
Bedroom 2	14.69 m ²
Bedroom 3	13.38 m ²
Master Bath	5.18 m ²
Bath 2	4.88 m ²
Terrace	15.23 m ²
Solarium	64.48 m ²
GROSS TOTAL AREA	180.49 m²

FUEGO-3.08

TPOLOGY
VT02

BEDROOMS
3 BR

REV
R00

DATE
12/09/23

ADDRESS

Avenida Pere Matutes 66. Platja d'en Bossa.
07800 Ibiza, Islas Baleares

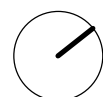
PROMOTER

DOMUS VIVENDI CREO
GmbH & Co KG, Sucursal en España

The Circle - Carrer Illes Canàries 18
Polígono Industrial Son Bugadelles
07183 Santa Ponsa - Calvià
España - Baleares

**DOMUSVIVENDI
GROUP**

*the plans only contain examples for furnishings. the plans are a draft status and are subject to change. structural optimization will be added to the plan in future.
*all the brown drawings (like furniture) are not included on the project.

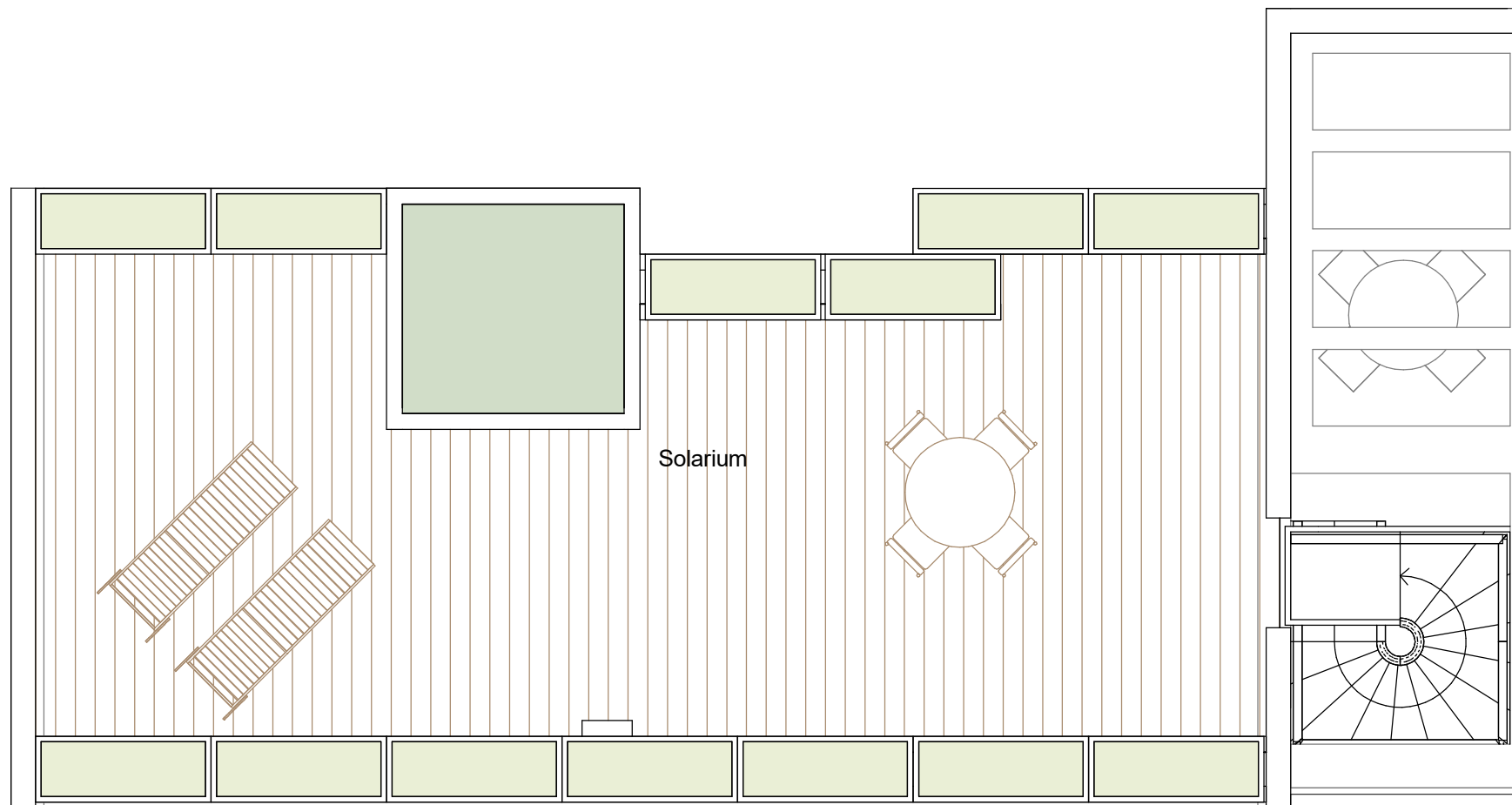




3rd Floor



LIFESTYLE APARTMENTS
IBIZA



FUEGO-3.08

TPOLOGY
VT02

BEDROOMS
3 BR

REV
R00

DATE
12/09/23

ADRESS

Avenida Pere Matutes 66. Platja d'en Bossa.
07800 Ibiza, Islas Baleares

PROMOTER

DOMUS VIVENDI CREO
GmbH & Co KG, Sucursal en España

The Circle - Carrer Illes Canàries 18
Polígono Industrial Son Bugadelles
07183 Santa Ponsa - Calvià
España - Baleares

DOMUSVIVENDI
GROUP

