





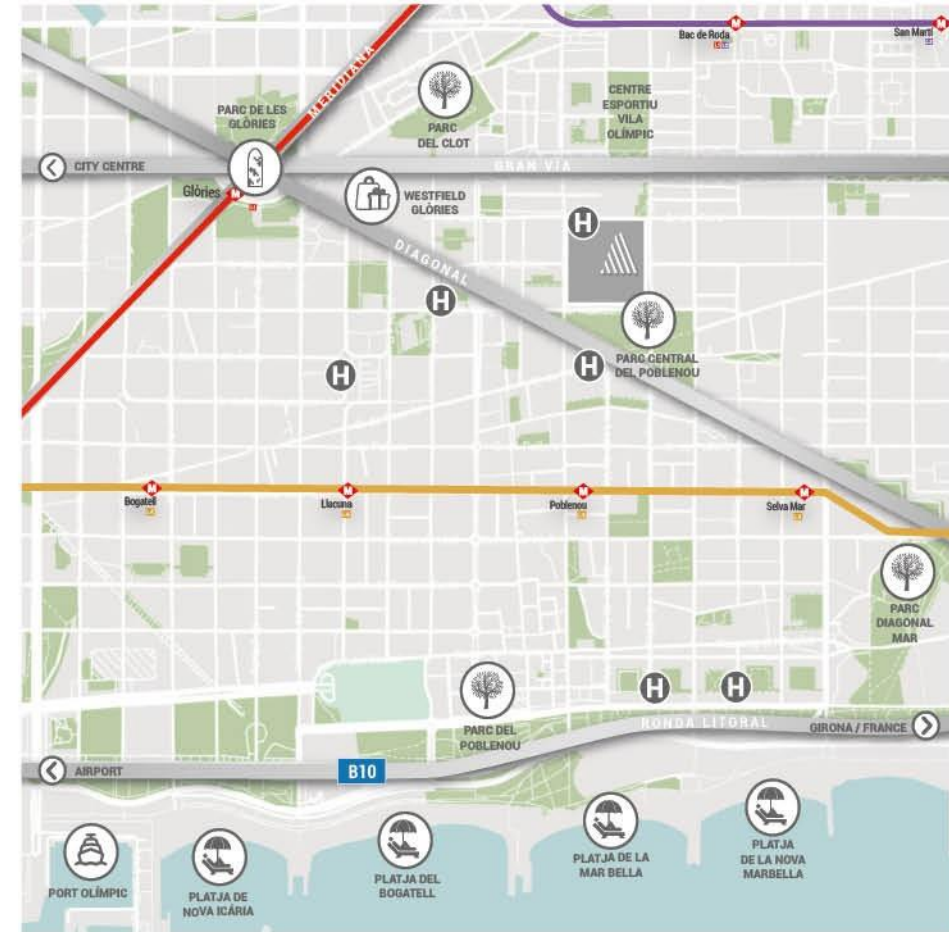
HISTORICAL LEGACY, CONTEMPORARY DESIGN

Can Ricart Lofts breathes new life into four emblematic warehouses from Barcelona's 19th century industrial past and transforms them into stunningly beautiful, exquisitely designed and equipped lofts, each with its own unique character.

POBLENOU & 22@ DISTRICT: PAST AND FUTURE

Barcelona's dynamic 22@ innovation district is a magnet for major tech companies and startups, their talented workforces and digital nomads.

This trendy Poblenou neighbourhood features a fascinating mix of high-tech companies, universities, student residences, hotels, parks and a wide range of leisure and cultural activities. Mar Bella beach is only a 15-minute stroll. It's the lace to work, live and experience the city's vibrant energy.



- 01 - STUDENT RESIDENCE
- 02 - HOTEL
- 03 - PEDESTRIAN SQUARE
- 04 - OFFICES
- 05 - CAMPUS DE LES ARTS (UB)
- 06 - PARC CENTRAL DE POBLENOU

BEACHES



PARC CENTRAL: THE CITY'S BIGGEST PEDESTRIAN AREA

Can Ricart Lofts, adjacent to Parc Central del Poblenou, truly embodies the smart city spirit: spacious, sustainable, creative environments where it's possible to connect with neighbourhood life. An oasis of tranquillity on four pedestrian blocks, where residents enjoy wide open spaces with a mix of restored historic buildings and spectacular contemporary design developments.

A | LOFTS

Warehouse A is the largest of the four historic buildings. It offers 12 lofts, two of which are triplexes, and a communal swimming pool.

The original arches on the heritage façades have been restored and the cargo doors reinterpreted to fill the interiors with light. The rear façade has been moved to create a pleasant, intimate outdoor passage along the length of the building.



ABUNDANT LIGHT IN CAREFULLY DESIGNED SPACES

Can Ricart Lofts stands out for its combination of original features and an extraordinary recovery of spaces to create a warm, luminous environment.

The original warehouse roofs, openings and skylights have been perfectly replicated. New open-air spaces have been created by moving rear façades and through open lightwells that lead on to interior terraces, blurring the lines between indoors and out.



HOMES OPEN TO THE SKY

One of the most original features of these lofts is how new interior façades have been created by emptying part of the original structure. Louvred roof beams provide luminosity and create beautiful spaces so that natural light floods through the large roof openings to warm the entire home with soft Mediterranean light.

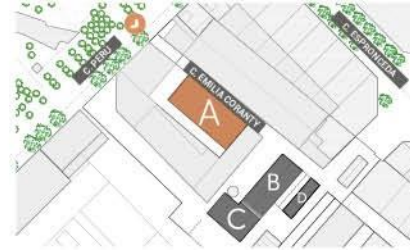
An architectural rendering of a modern residential courtyard. The scene features a central paved walkway flanked by buildings. On the left, a building has a textured facade and large glass doors with vertical wooden slat screens. A person in a grey coat stands near one of the entrances. On the right, a woman in a gold dress sits on a wooden bench, looking towards the courtyard. A vibrant pink flowering tree stands near the bench. In the background, a taller, more modern building with large windows and balconies is visible. The sky is clear and blue. A large, stylized white logo consisting of several parallel diagonal lines is positioned in the upper center of the image.

PLANS

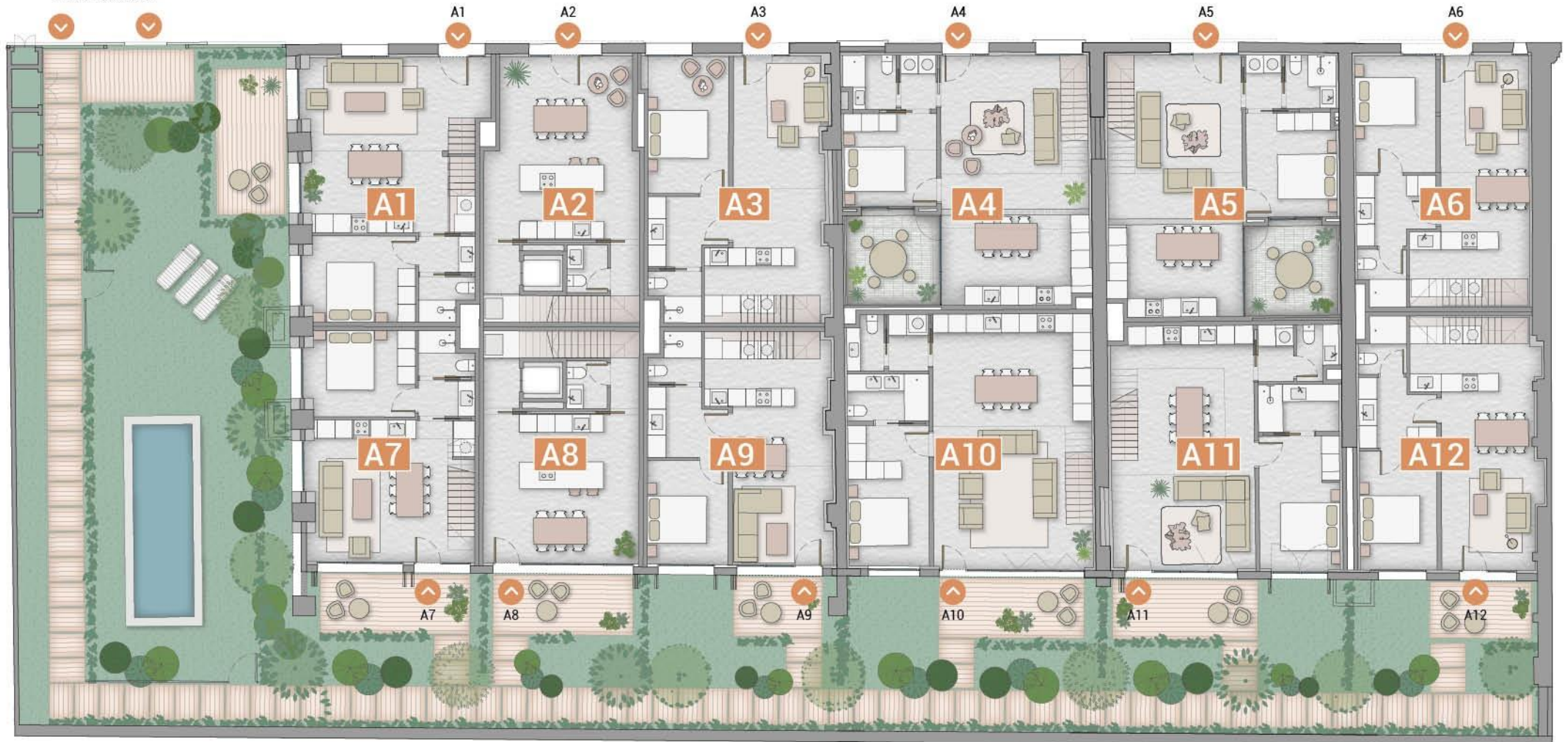
A I LOFTS

A LOFTS

PLANTA BAJA GROUND FLOOR

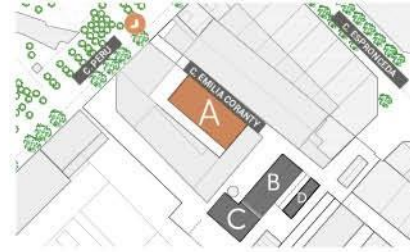


ENTRADA GENERAL
MAIN ENTRANCE



A LOFTS

PLANTA PRIMERA
FIRST FLOOR



A LOFTS

PLANTA SEGUNDA
SECOND FLOOR





CANRICART - LOFTS

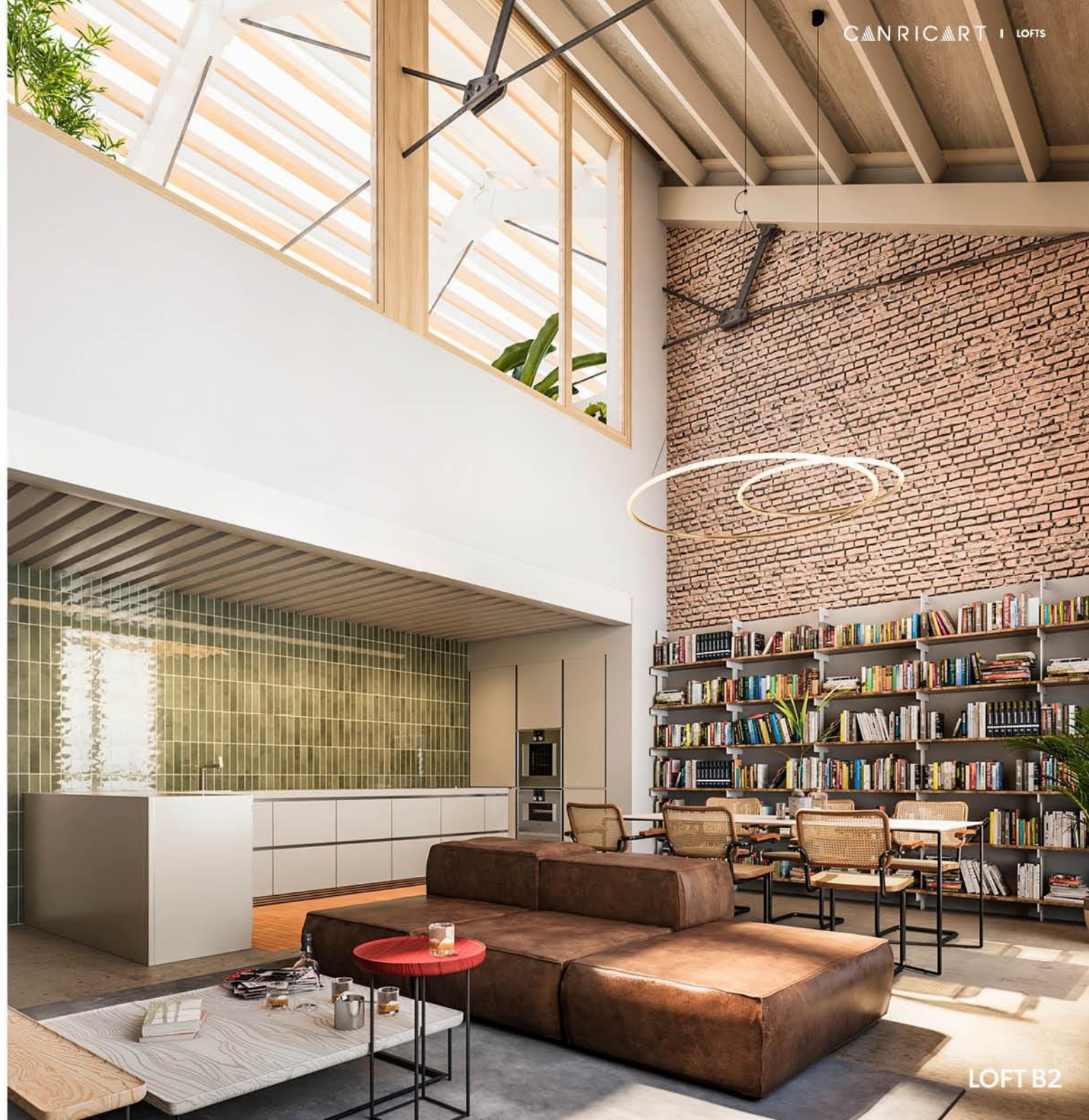
B
I LOFTS



B I LOFTS

Warehouse B presents five lofts next to the iconic restored Can Ricart chimney.

The façades preserve the original arches, now transformed into large windows and entrance doors. All feature interior terraces for enjoying the Mediterranean light in total privacy.



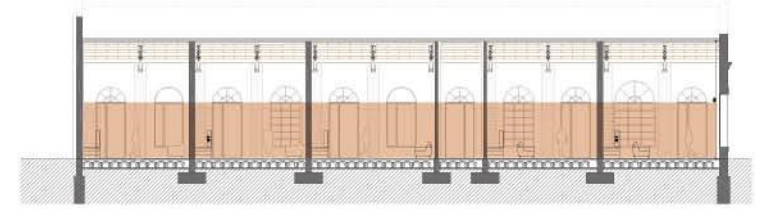


PLANS

B I LOFTS

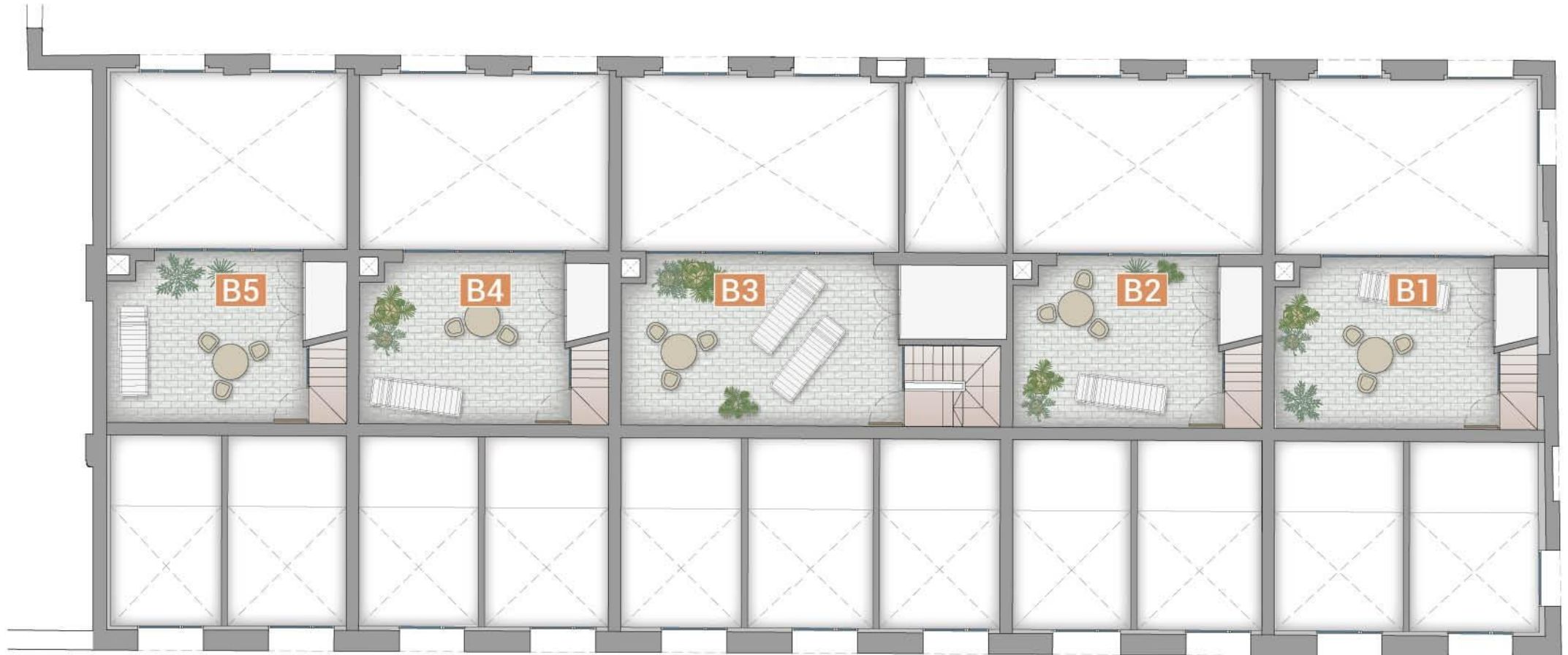
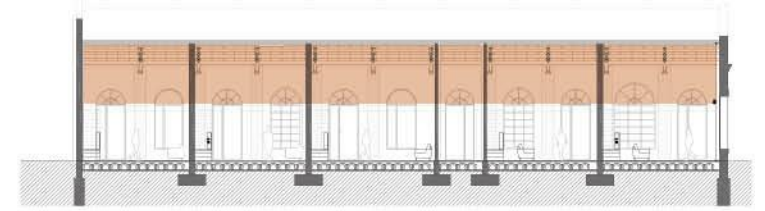
B LOFTS

PLANTA BAJA
GROUND FLOOR



B LOFTS

PLANTA PRIMERA
FIRST FLOOR





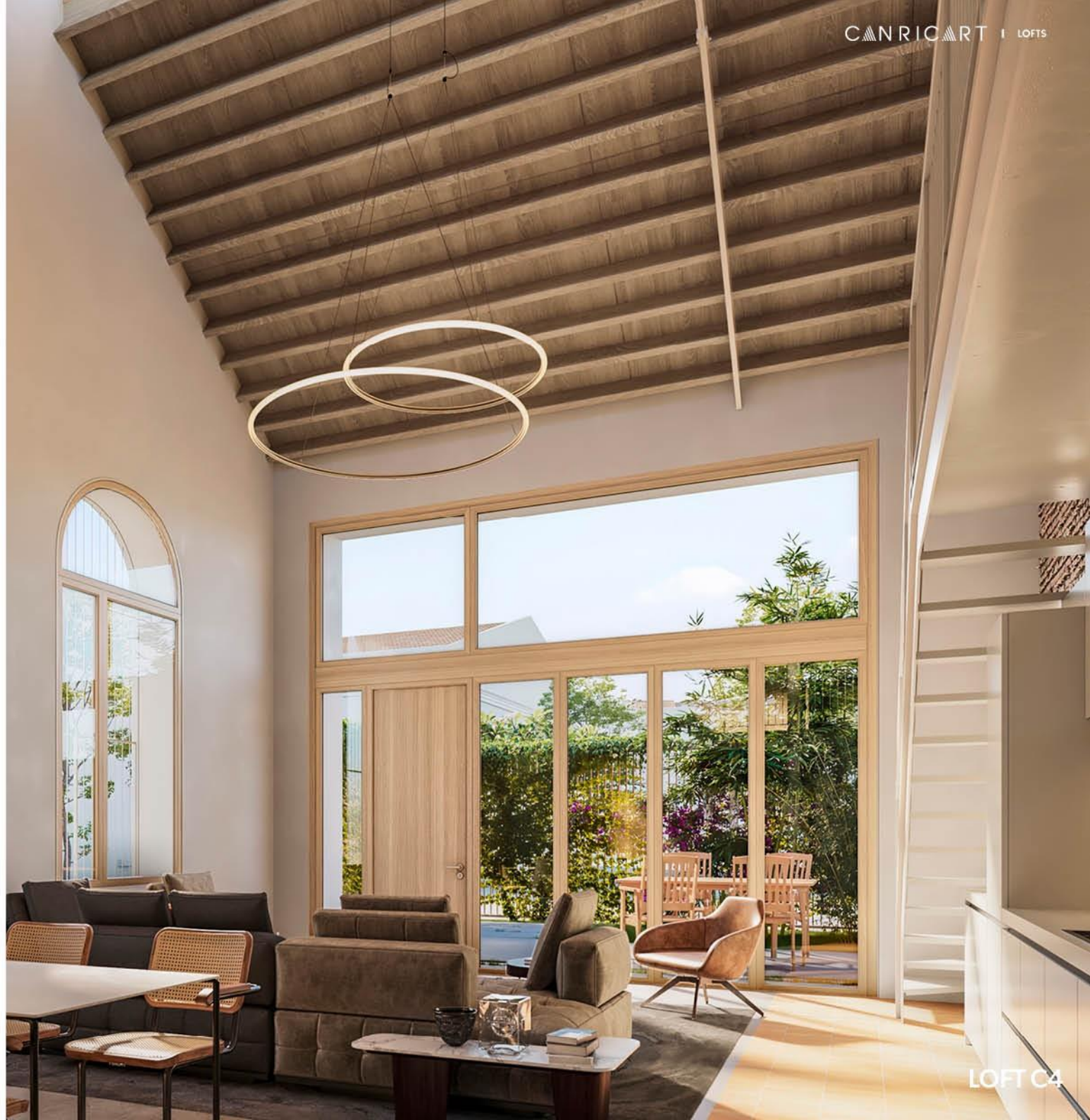
CANRICART - LOFTS



C | LOFTS

The four lofts in **Warehouse C** are located next to the iconic Can Ricart chimney.

A stunning sense of space, interior terraces, private outdoor gardens, skylights in lofts with double-height ceilings and an open mezzanine that's ideal as a study or work area.





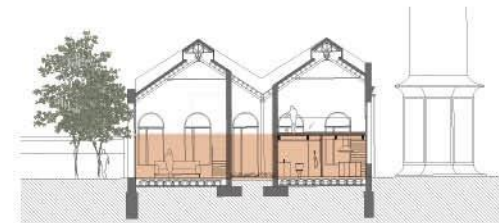
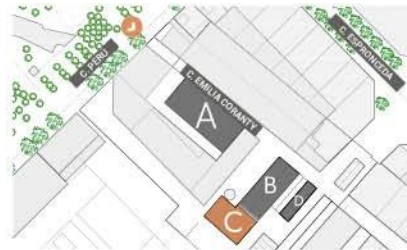
PLANS

C I LOFTS



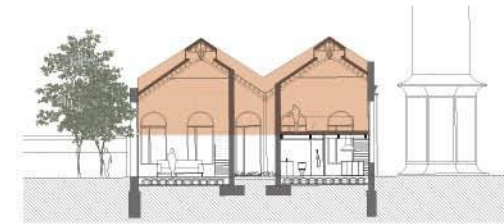
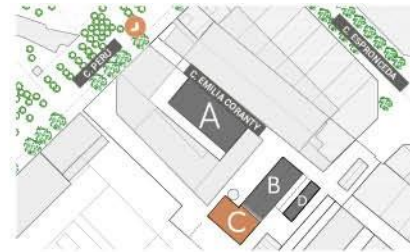
C LOFTS

PLANTA BAJA
GROUND FLOOR



C I LOFTS

PLANTA PRIMERA
FIRST FLOOR





CANRICART - LOFTS

D I LOFTS

D I LOFTS

La nave **D** es la construcción más cercana al concepto de loft americano por sus grandes alturas, ventanales a lo largo de toda la fachada y esa presencia de luz tamizada.

El proyecto presenta dos lofts en planta baja y en la segunda planta un loft y un dúplex con gran terraza.





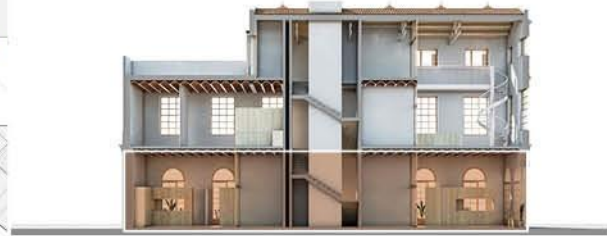
PLANOS

D I LOFTS



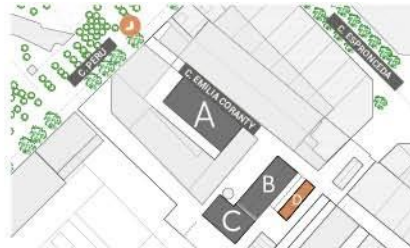
D I LOFTS

PLANTA BAJA
GROUND FLOOR



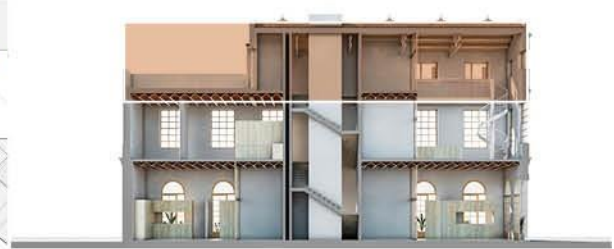
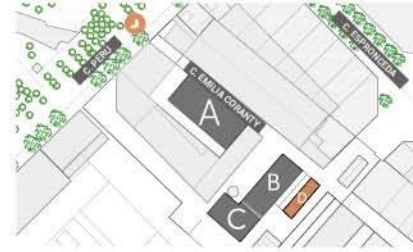
D LOFTS

PLANTA PRIMERA
FIRST FLOOR



D LOFTS

PLANTA SEGUNDA
SECOND FLOOR





Info@lucasfox.com

+34 933 562 989

